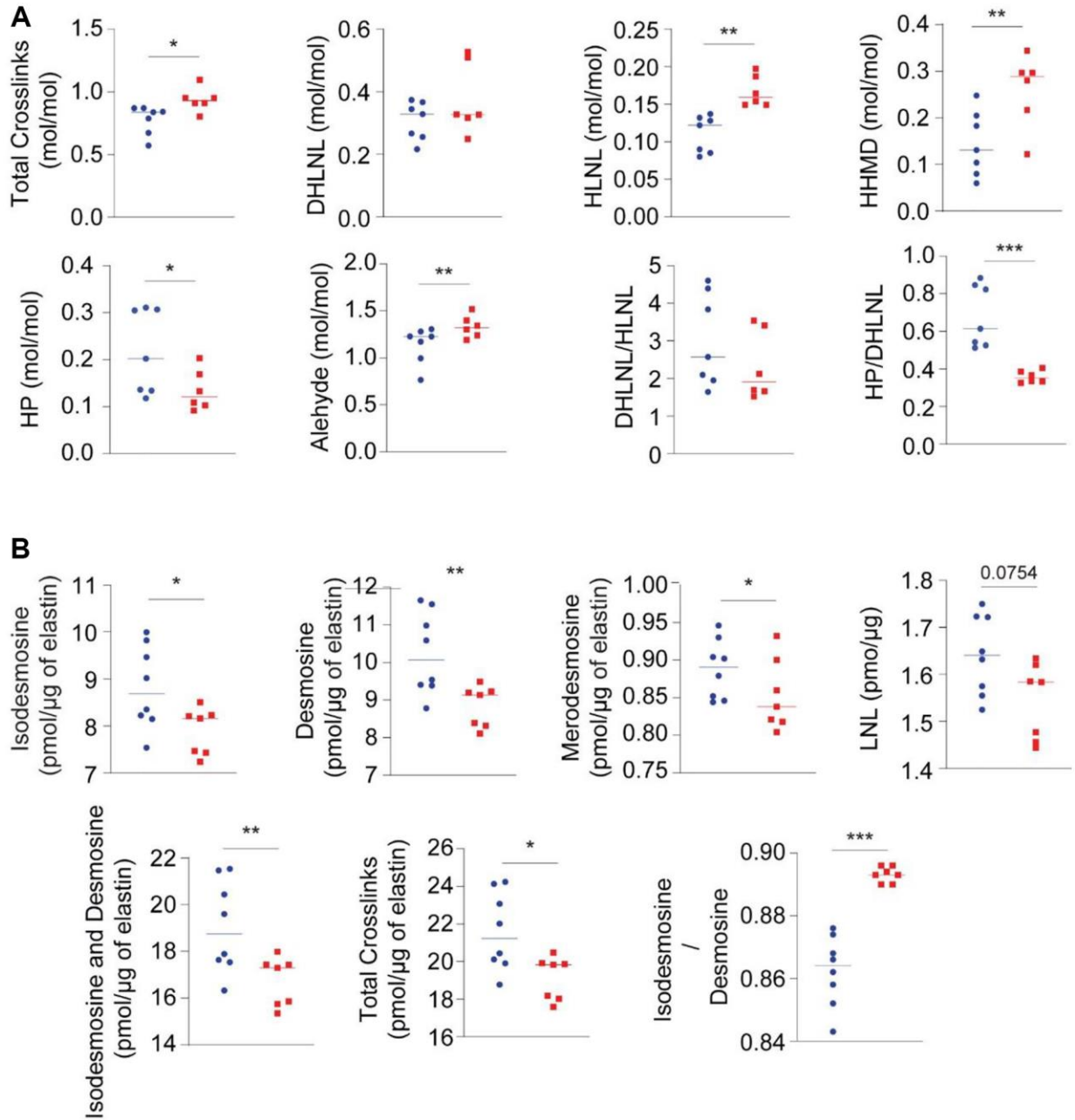
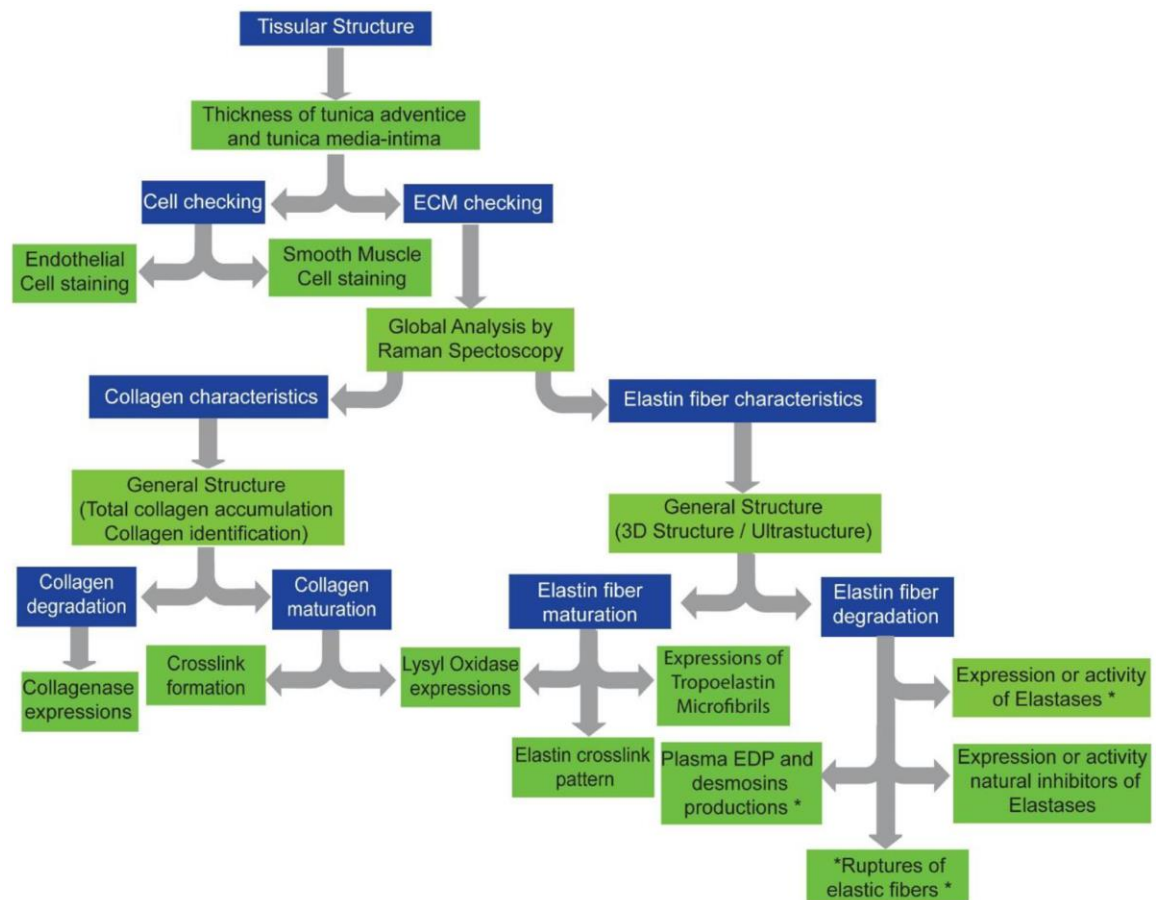


SUPPLEMENTARY FIGURES



Supplementary Figure 1. Evaluation of crosslinks in the abdominal aorta of young (blue) or old (red) mice. (A) Collagen cross-links. (B) Elastin cross-links. Statistical test: Mann-Whitney. Mean +/- SEM. Significant differences (* $p < 0.05$, ** $p < 0.001$, * $p < 0.0001$, Mann-Whitney).**



Supplementary Figure 2. Summary of the decision tree allowing the study of vascular stiffness by morphological approaches. “*” identifies parameters that are methodologically accessible for clinical studies.