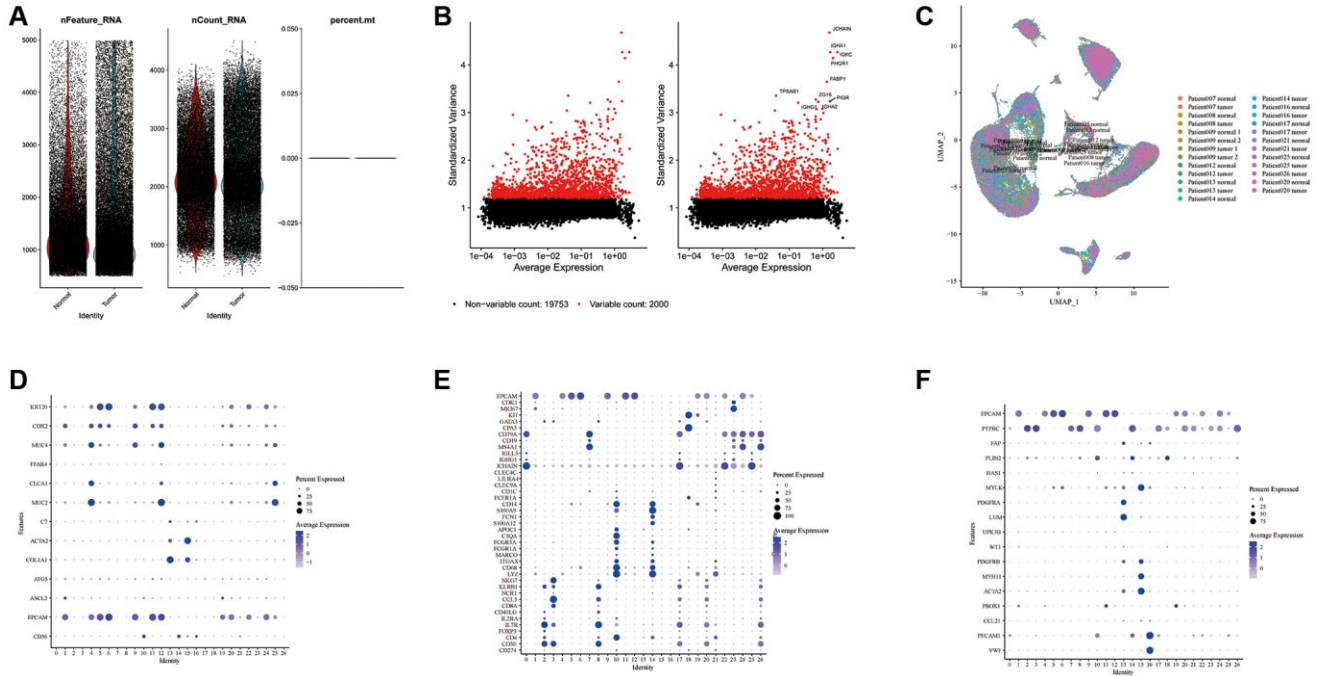


# SUPPLEMENTARY FIGURE



**Supplementary Figure 1. Single-cell quality control process. (A)** Gene, mitochondrial, and cell count after the accusation. **(B)** Selection of 2000 highly variable genes for subsequent analysis. **(C)** Visualization of sample distribution using UMAP after harmonizing cells. **(D–F)** Identification of marker genes for cell annotation.