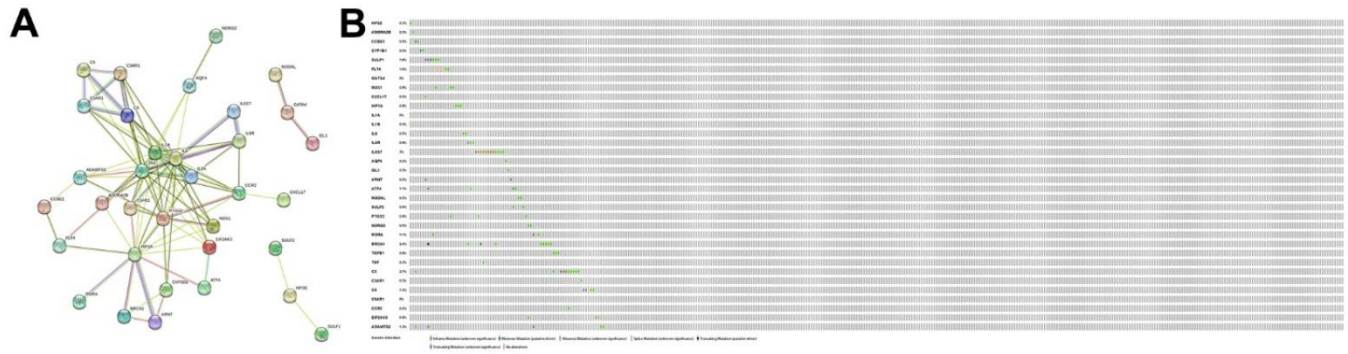
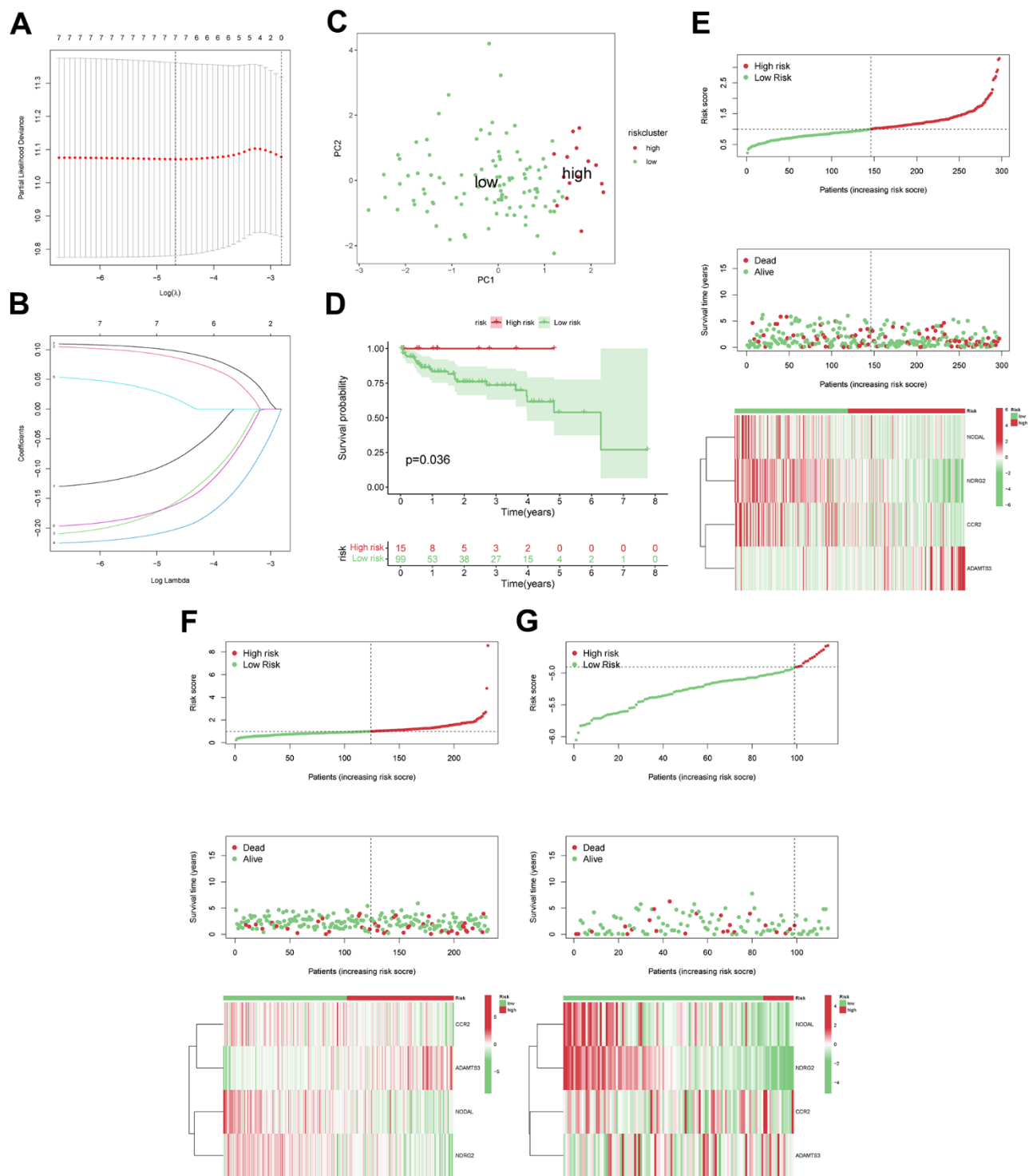


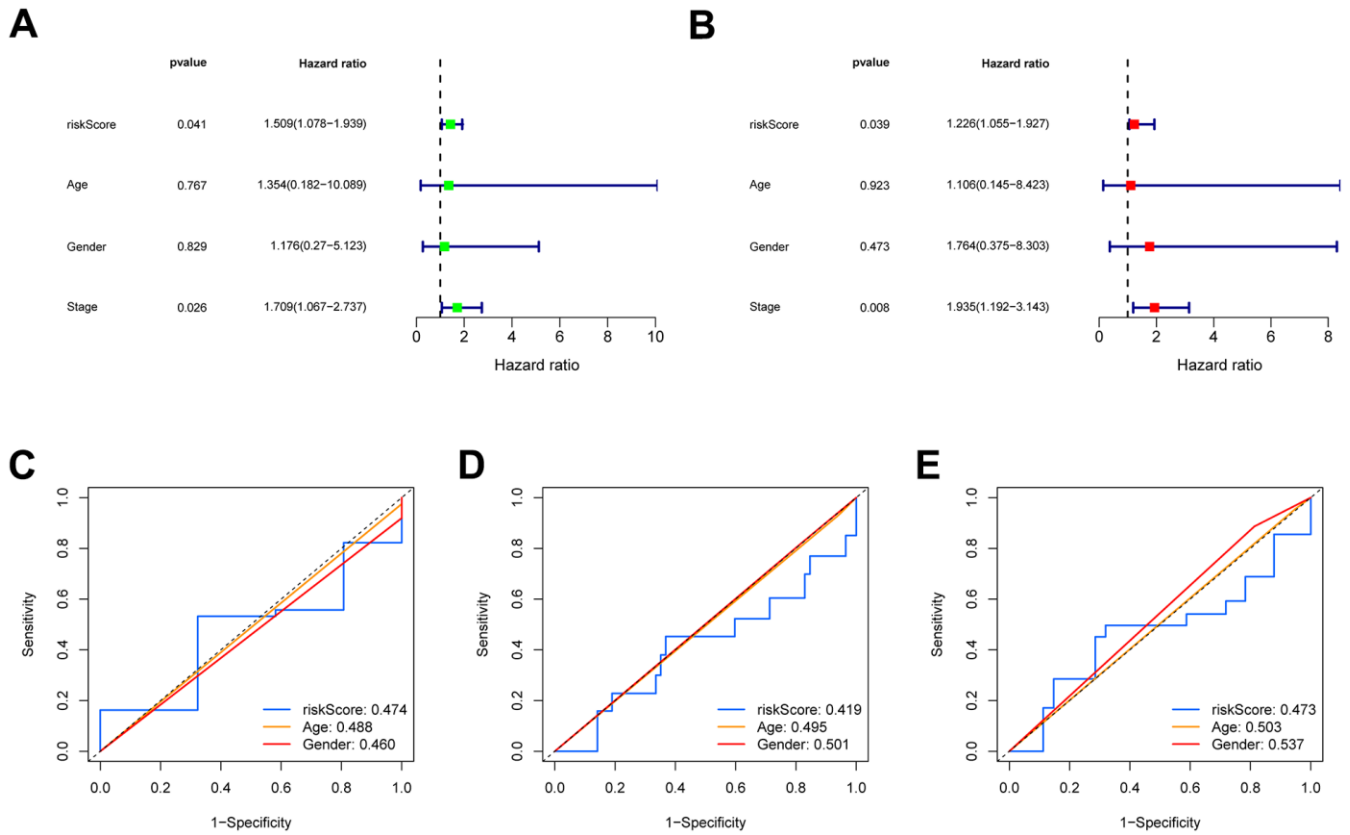
SUPPLEMENTARY FIGURES



Supplementary Figure 1. The relationships and characters of VEGF production-related genes (VPRGs). (A) The PPI network of VPRGs in STRING database. **(B)** The copy number variation and somatic mutational status of GSRGs.



Supplementary Figure 2. LASSO regression analysis. (A) Partial likelihood deviance as a function of regularization parameter λ in the training dataset. Each red point marks a λ value along regularization paths, and gray error bars represent confidence intervals for the cross-validated error rate. The left vertical dotted line indicates the minimum error, whereas the right vertical dotted line represents the most significant λ value, the error of which is within 1 SD of the minimum. The horizontal row of numbers above the plot shows the gene number in each condition upon shrinkage and selection as determined by the linear regression. (B) The craft plot for partial likelihood deviance in LASSO, different colors represent different genes associated with the VEGF production-related signature (VPRS). (C) PCA of HCC samples from the TCGA; dots in red and green represent samples in high-risk and low-risk groups, respectively. (D) Overall survival analysis of the risk score of HCC patients in TCGA. The distribution of risk score, corresponding OS, and gene expression based on the TCGA (E), ICGC (F), and GSE76247 (G) sets.



Supplementary Figure 3. The prognostic value of VPRS. In the GSE76427, forest plot on the left for the univariate Cox test (A) displaying the correlation of the risk score and clinical factors with patient OS, and forest plot on the right for the multivariate Cox analysis (B) used to identify independent risk factors associated with the OS. The ROC curve of clinical factors and risk score for predicting the 1- (C), 3- (D), and 5-year (E) OS.