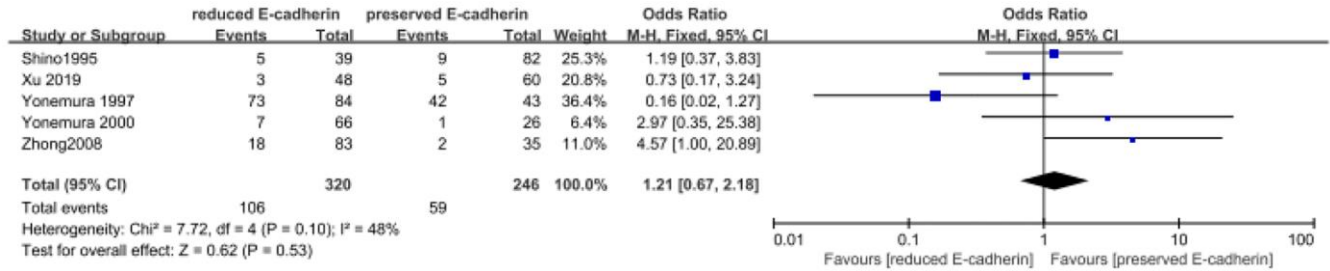
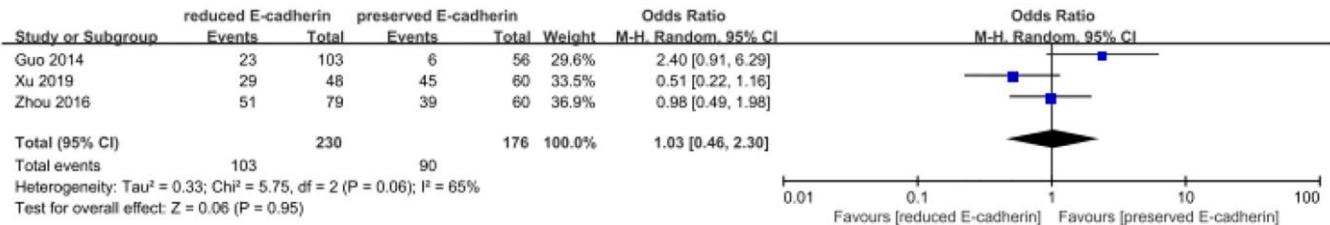


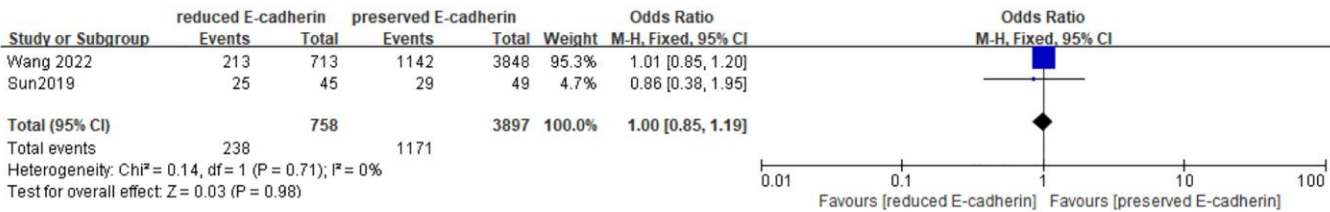
SUPPLEMENTARY FIGURES



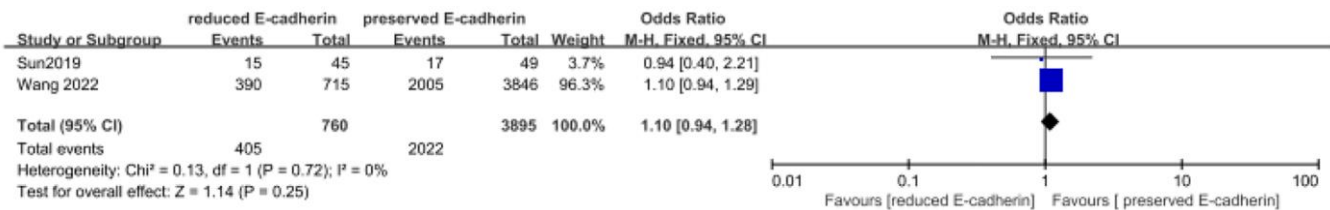
Supplementary Figure 1. Forest plot of the odds ratio for the correlation of E-cadherin expression with liver metastasis.



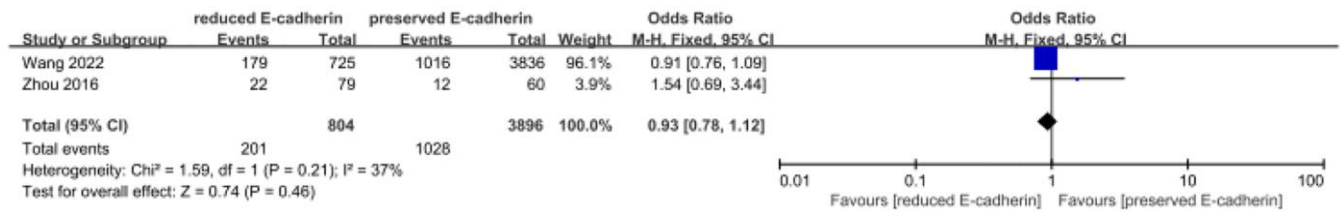
Supplementary Figure 2. Forest plot of the odds ratio for the correlation of E-cadherin expression with perineural invasion.



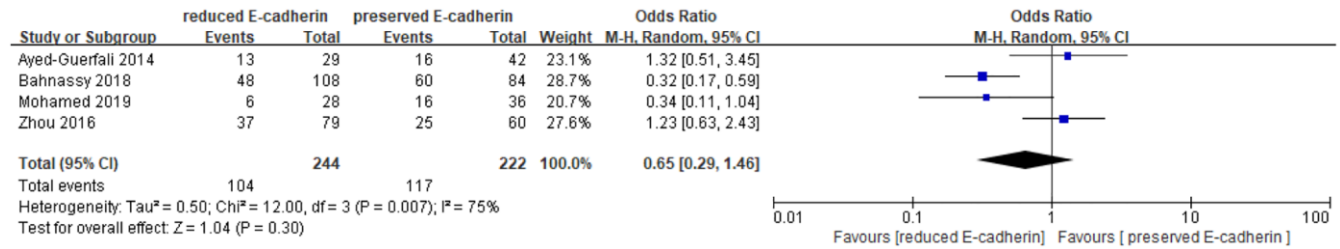
Supplementary Figure 3. Forest plot of the odds ratio for the correlation of E-cadherin expression with alcohol consumption.



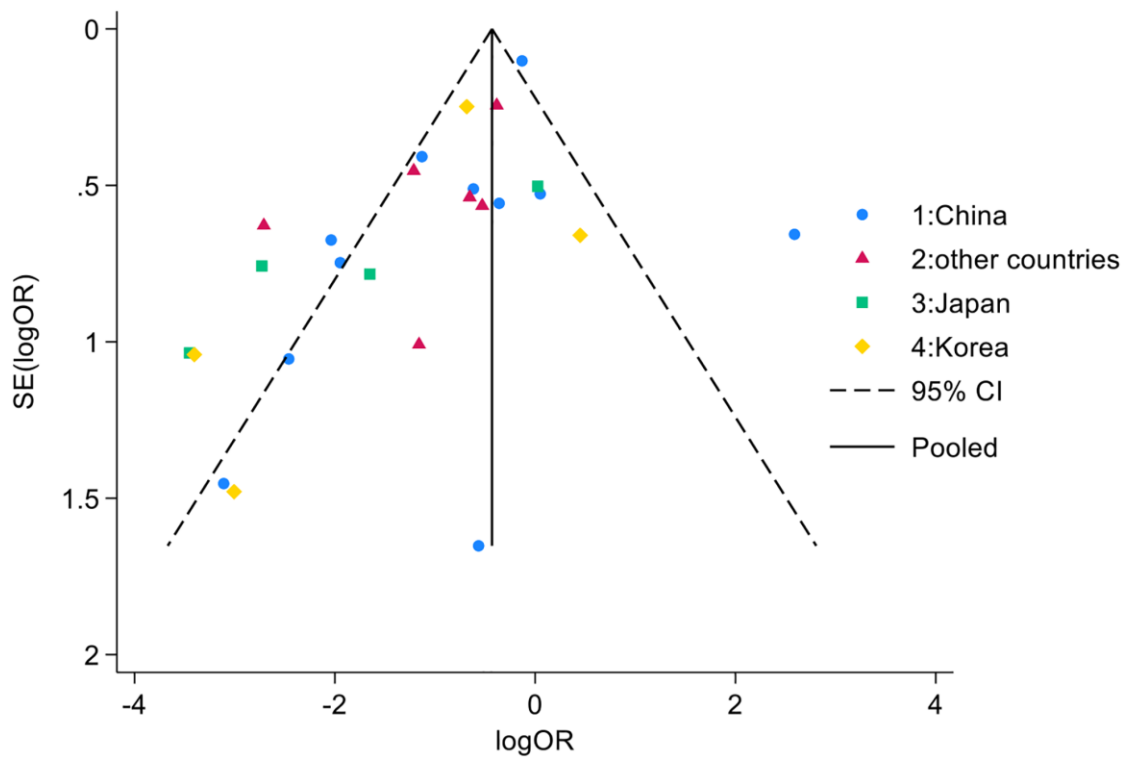
Supplementary Figure 4. Forest plot of the odds ratio for the correlation of E-cadherin expression with smoking status.



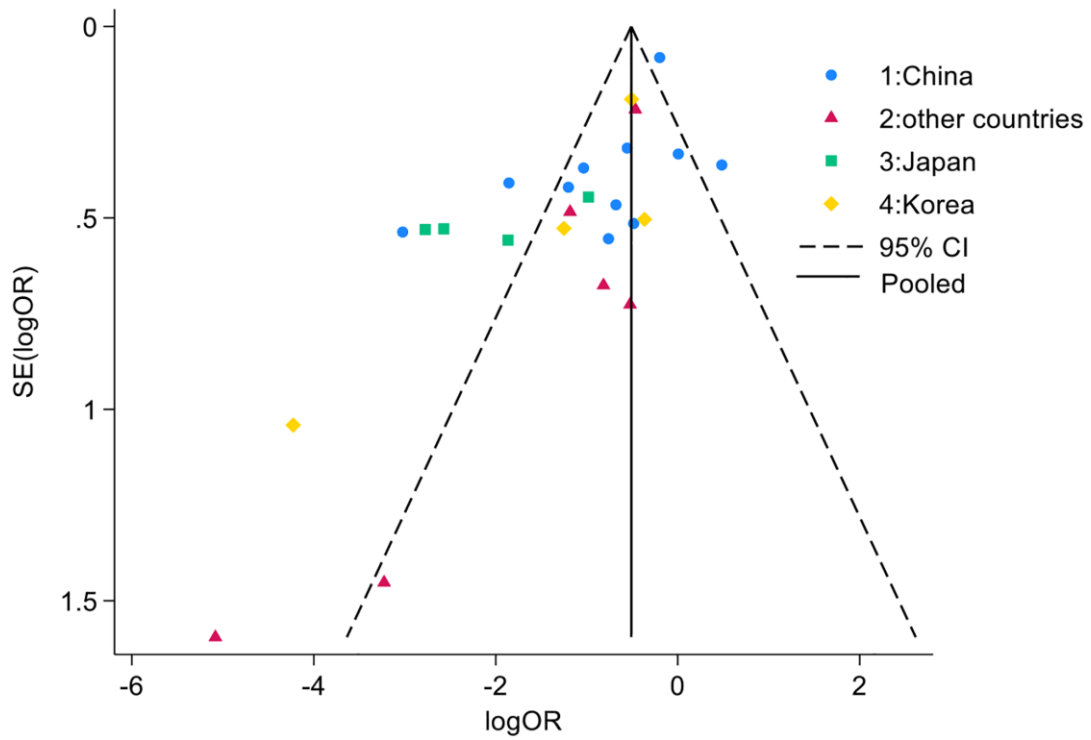
Supplementary Figure 5. Forest plot of the odds ratio for the correlation of E-cadherin expression with familial history.



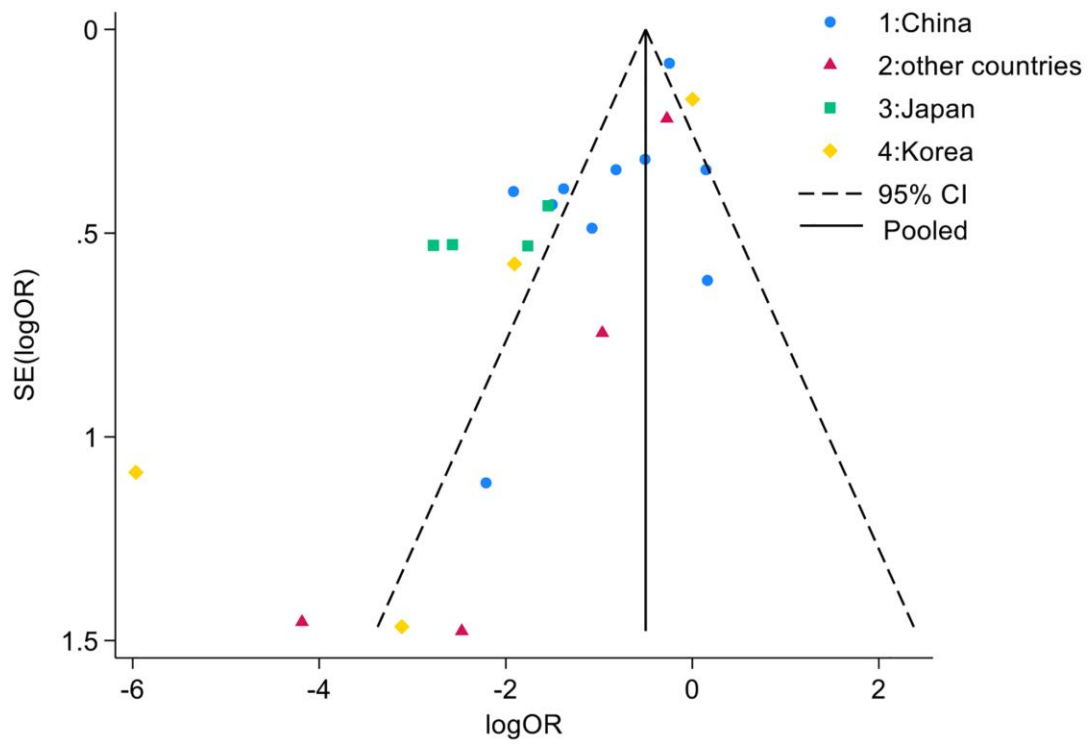
Supplementary Figure 6. Forest plot of the odds ratio for the correlation of E-cadherin expression with HP infection.



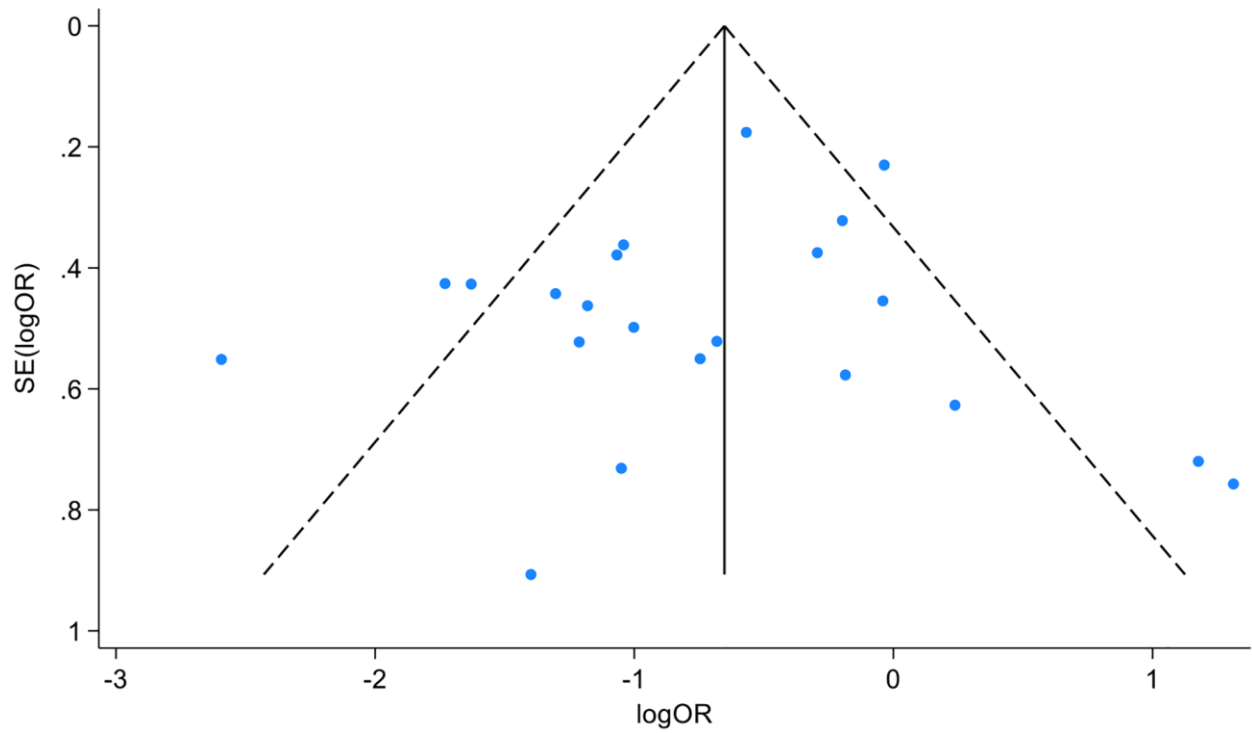
Supplementary Figure 7. Funnel plot of the odds ratio for the correlation of E-cadherin expression with one-year overall survival.



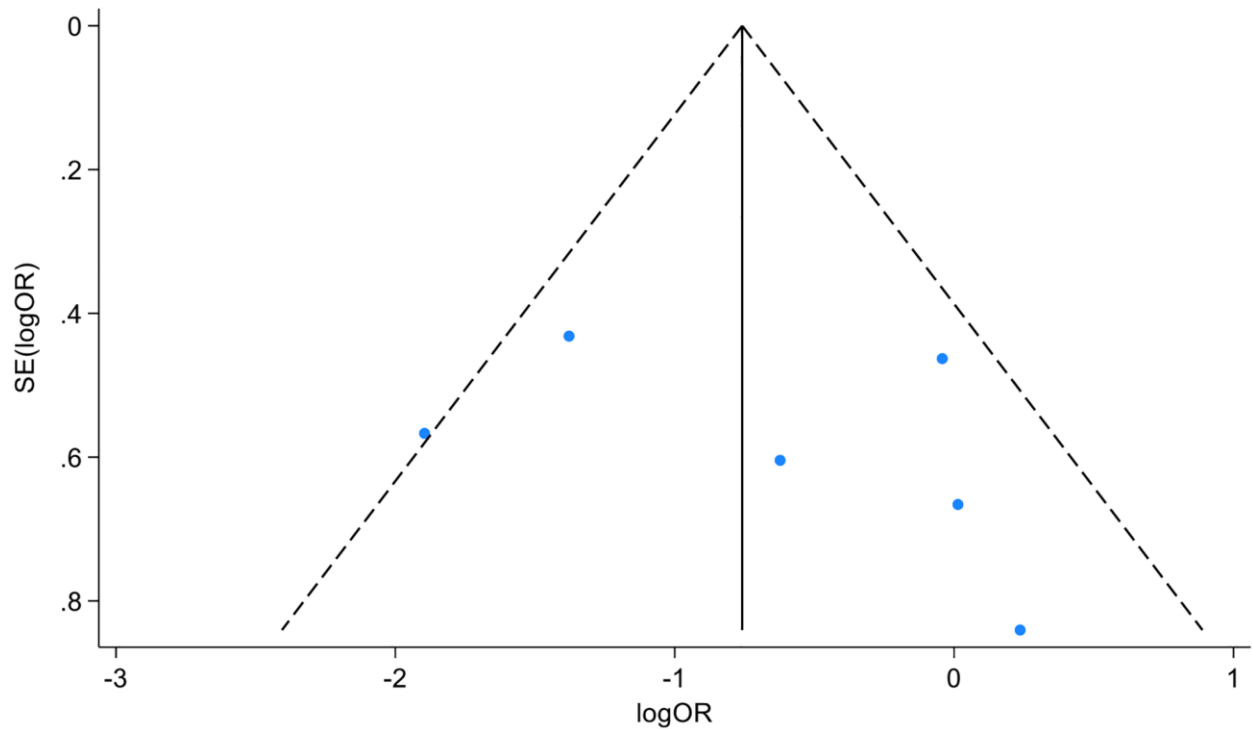
Supplementary Figure 8. Funnel plot of the odds ratio for the correlation of E-cadherin expression with three-year overall survival.



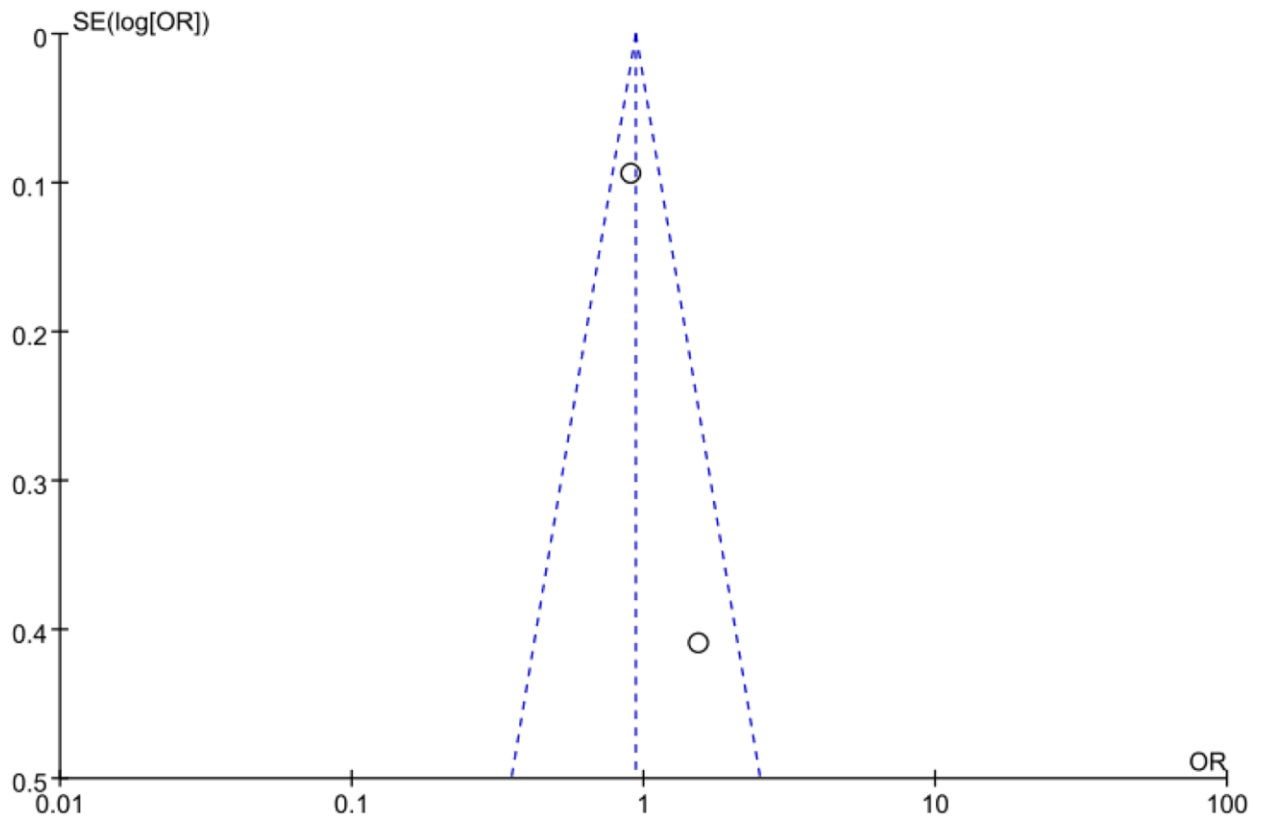
Supplementary Figure 9. Funnel plot of the odds ratio for the correlation of E-cadherin expression with five-year overall survival.



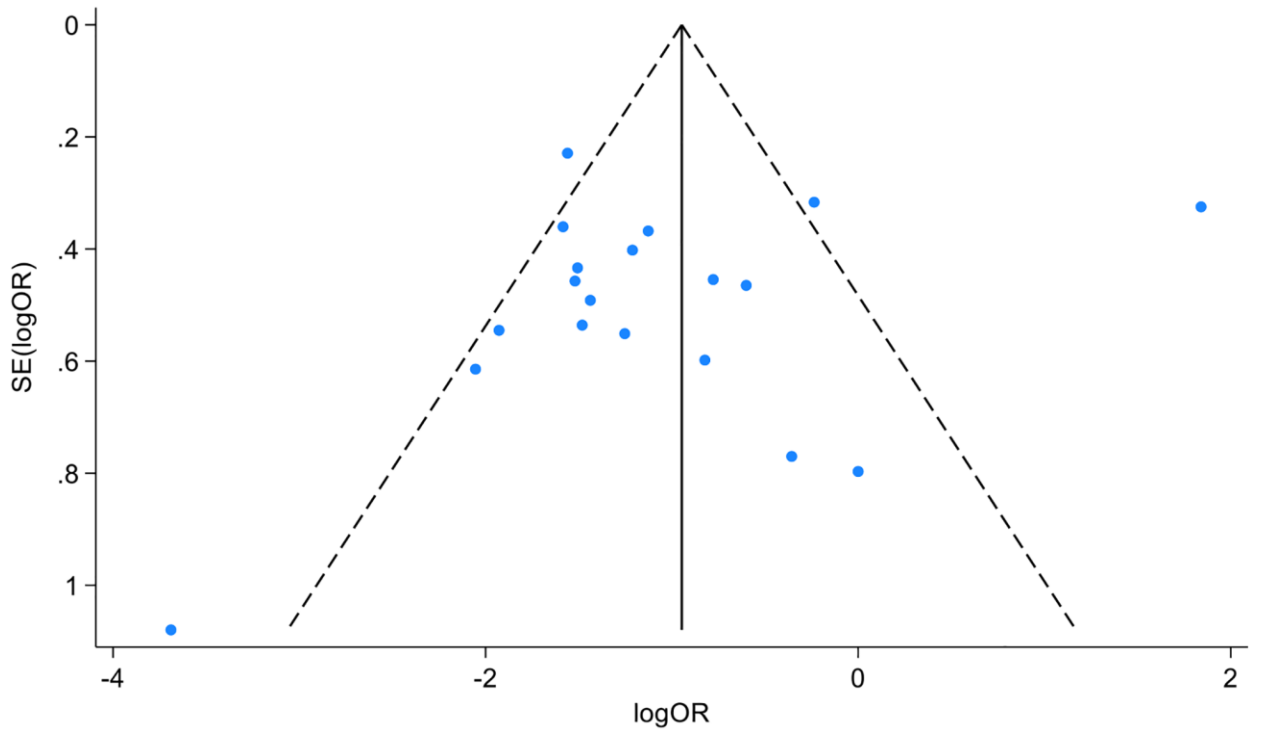
Supplementary Figure 10. Funnel plot of the odds ratio for the correlation of E-cadherin expression with depth of invasion.



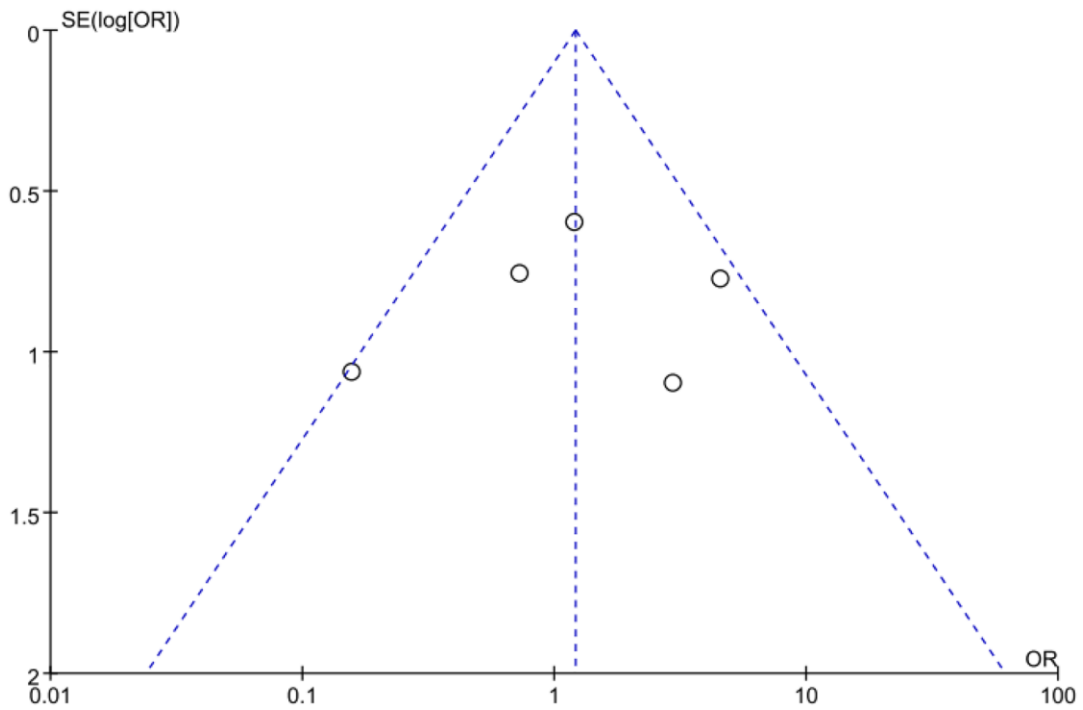
Supplementary Figure 11. Funnel plot of the odds ratio for the correlation of E-cadherin expression with Borrmann classification.



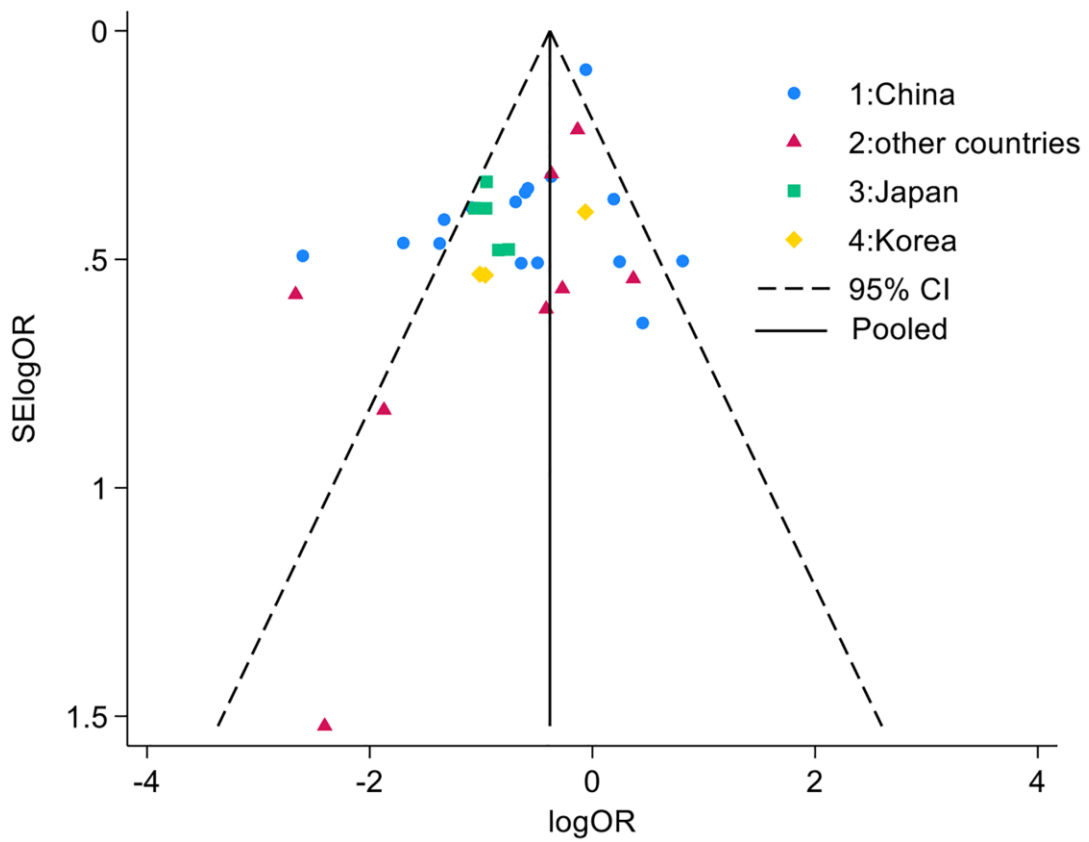
Supplementary Figure 12. Funnel plot of the odds ratio for the correlation of E-cadherin expression with familial history.



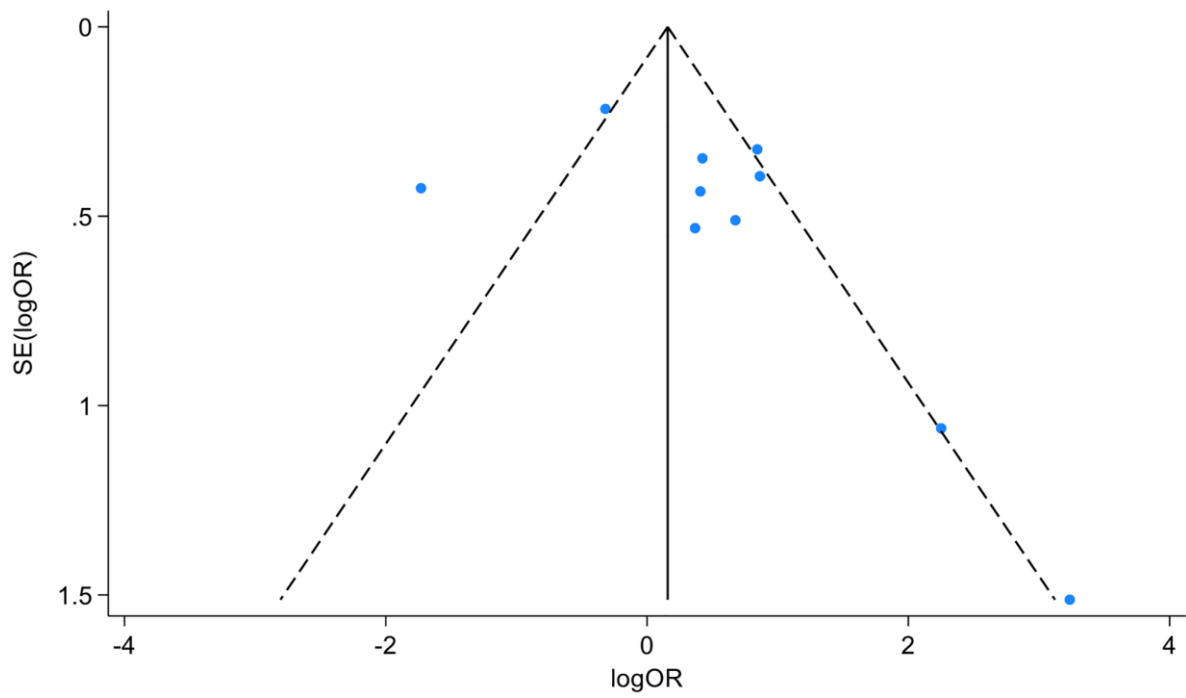
Supplementary Figure 13. Funnel plot of the odds ratio for the correlation of E-cadherin expression with and Lauren type.



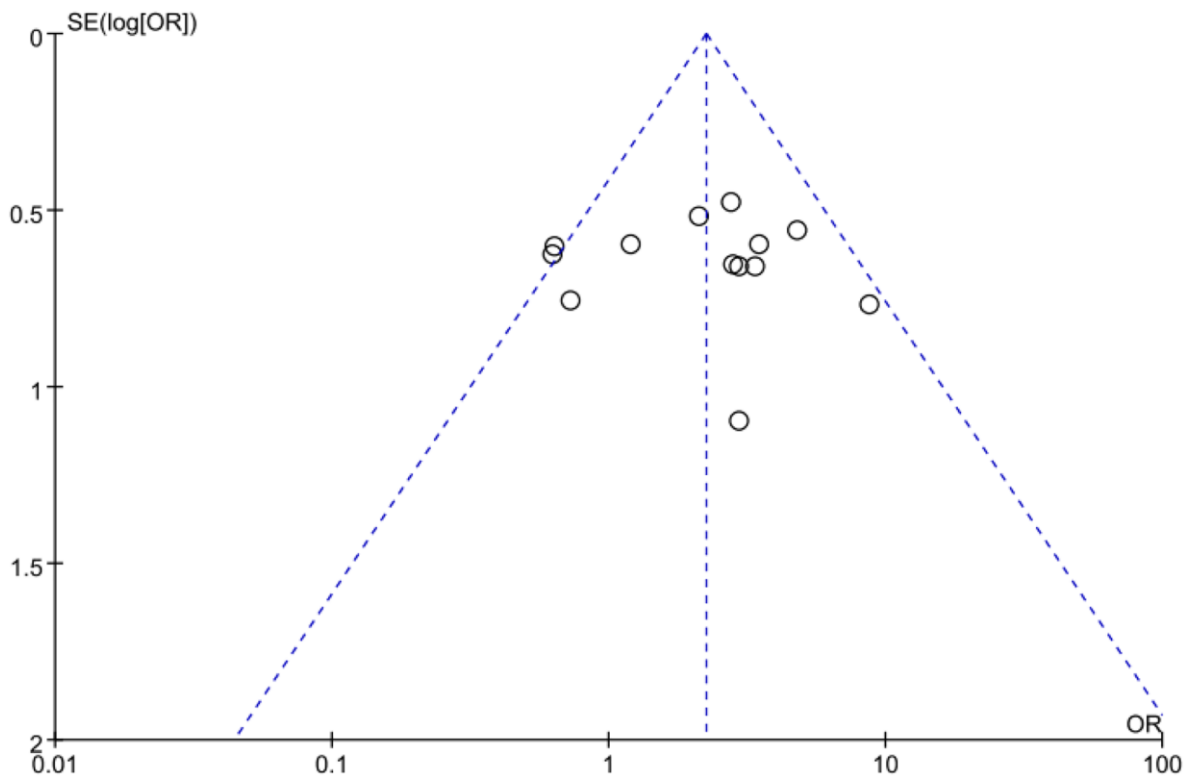
Supplementary Figure 14. Funnel plot of the odds ratio for the correlation of E-cadherin expression with liver metastasis.



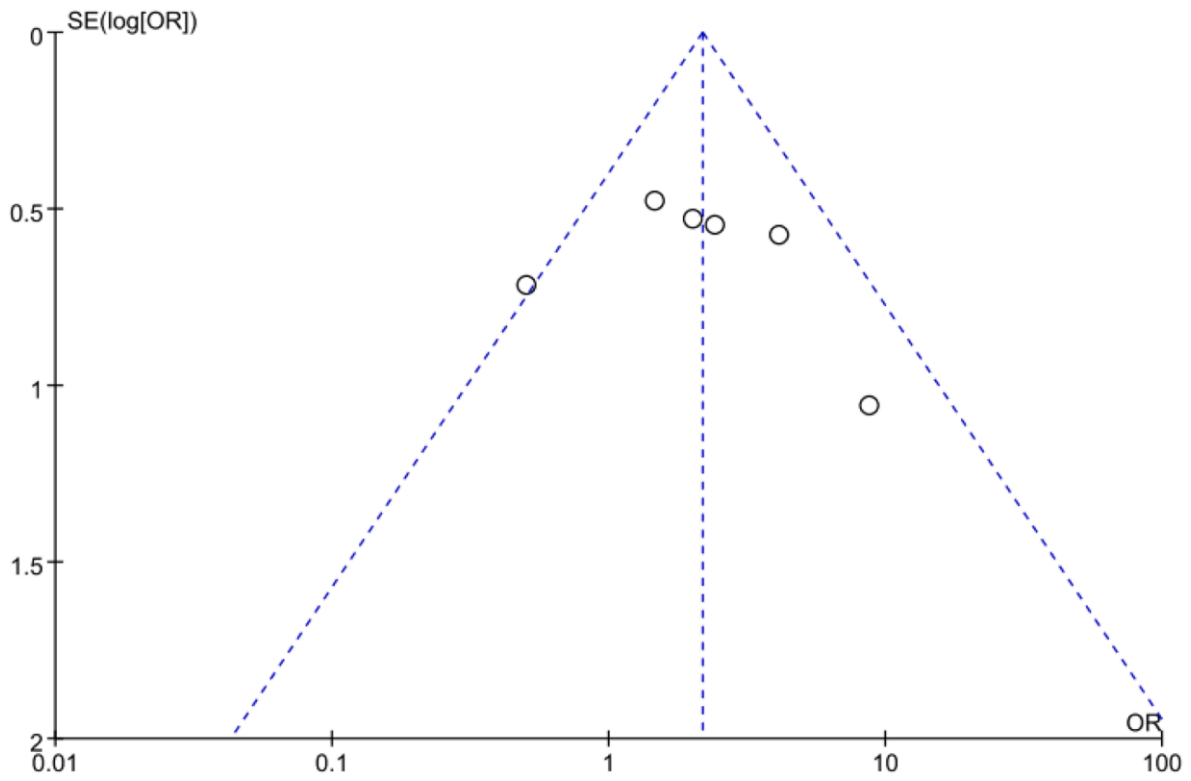
Supplementary Figure 15. Funnel plot of the odds ratio for the correlation of E-cadherin expression with lymphatic node metastasis.



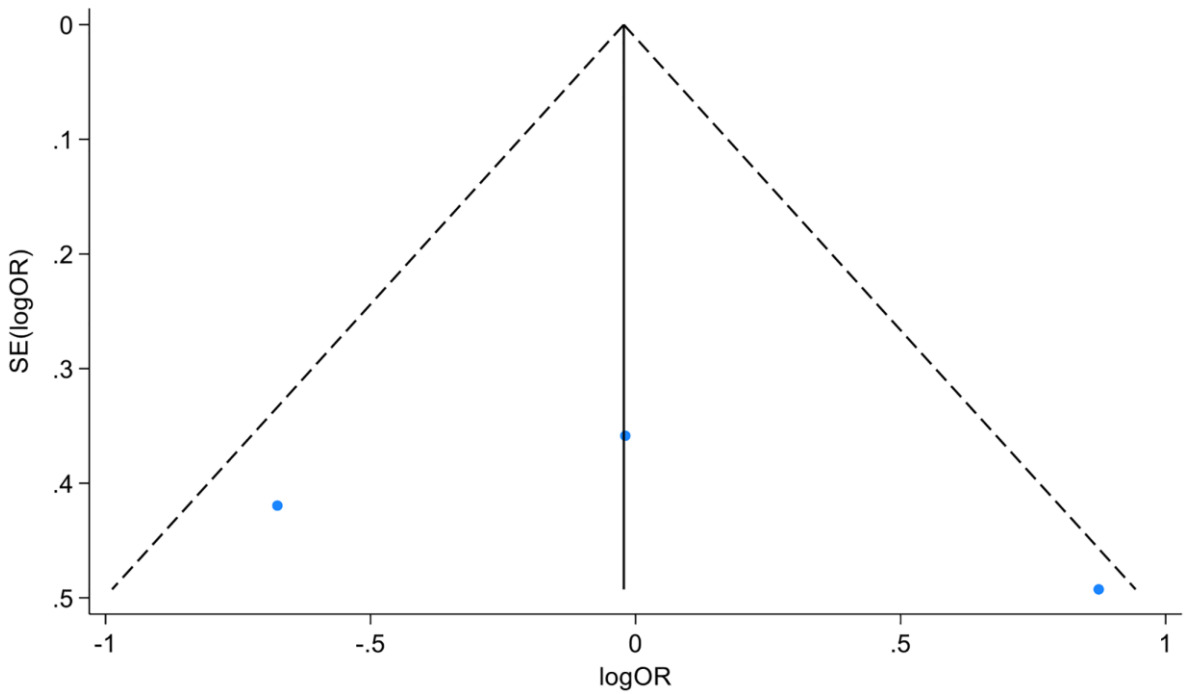
Supplementary Figure 16. Funnel plot of the odds ratio for the correlation of E-cadherin expression with lymphatic vessel invasion.



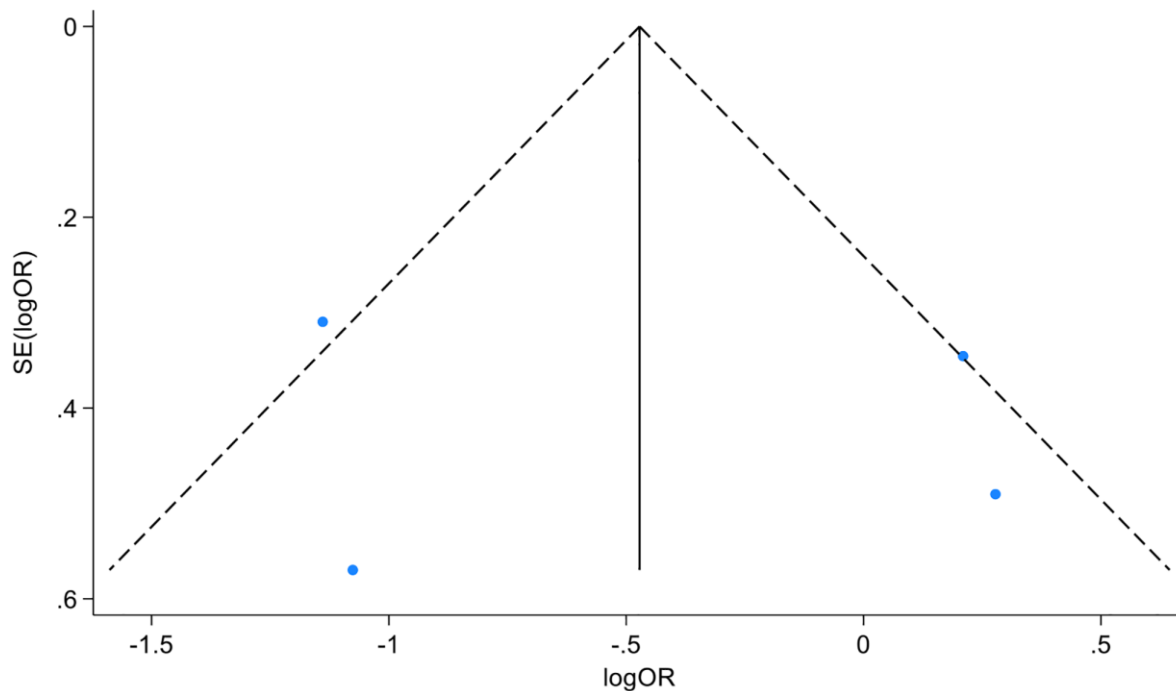
Supplementary Figure 17. Funnel plot of the odds ratio for the correlation of E-cadherin expression with distant metastasis.



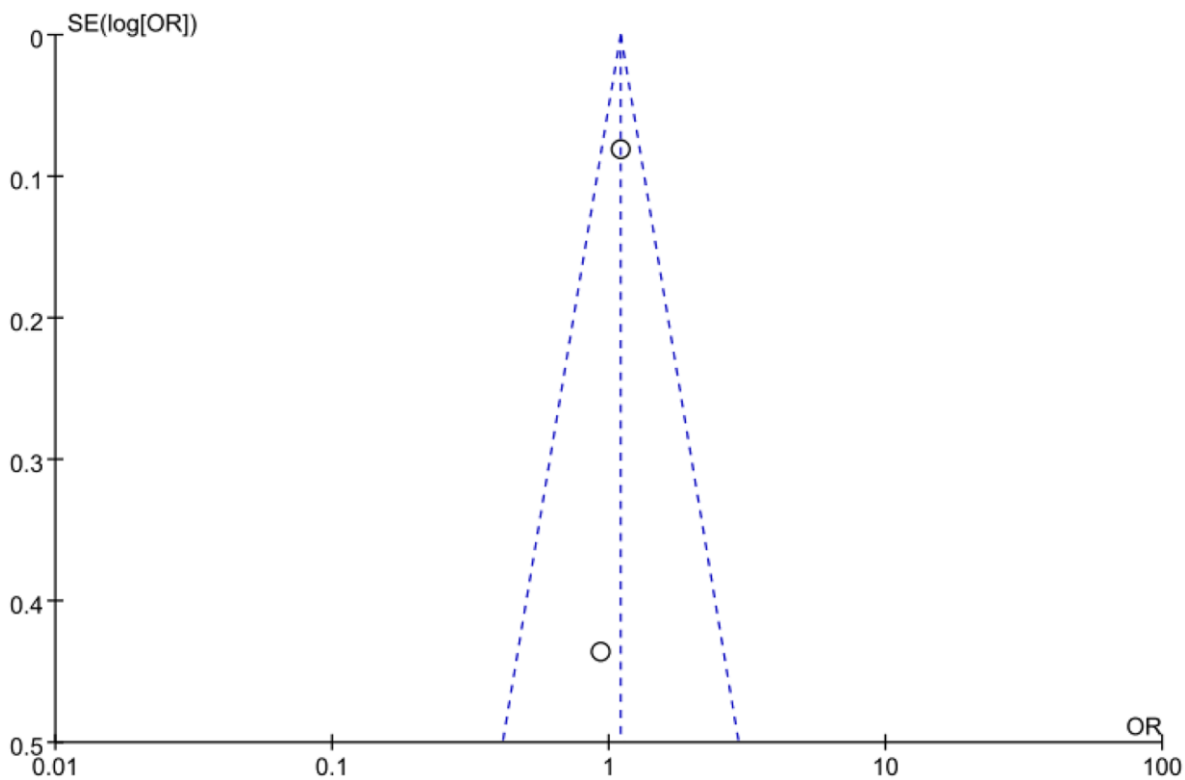
Supplementary Figure 18. Funnel plot of the odds ratio for the correlation of E-cadherin expression with peritoneal metastasis.



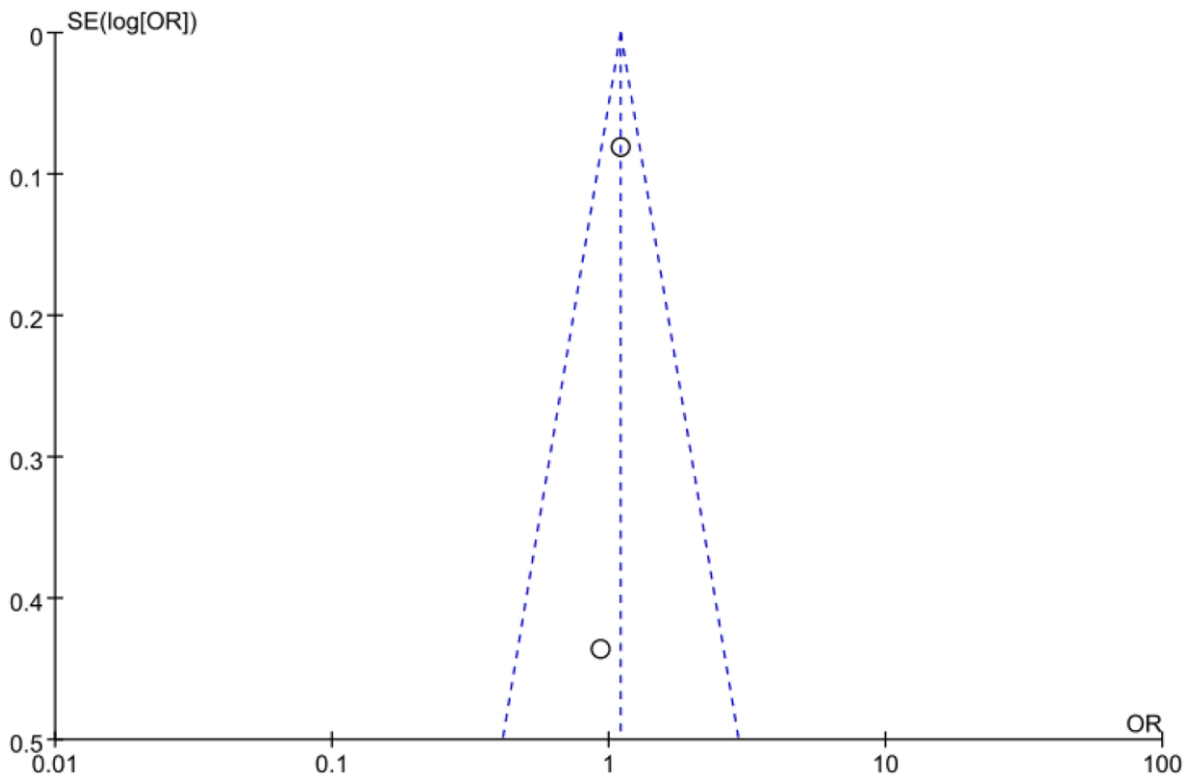
Supplementary Figure 19. Funnel plot of the odds ratio for the correlation of E-cadherin expression with perineural invasion.



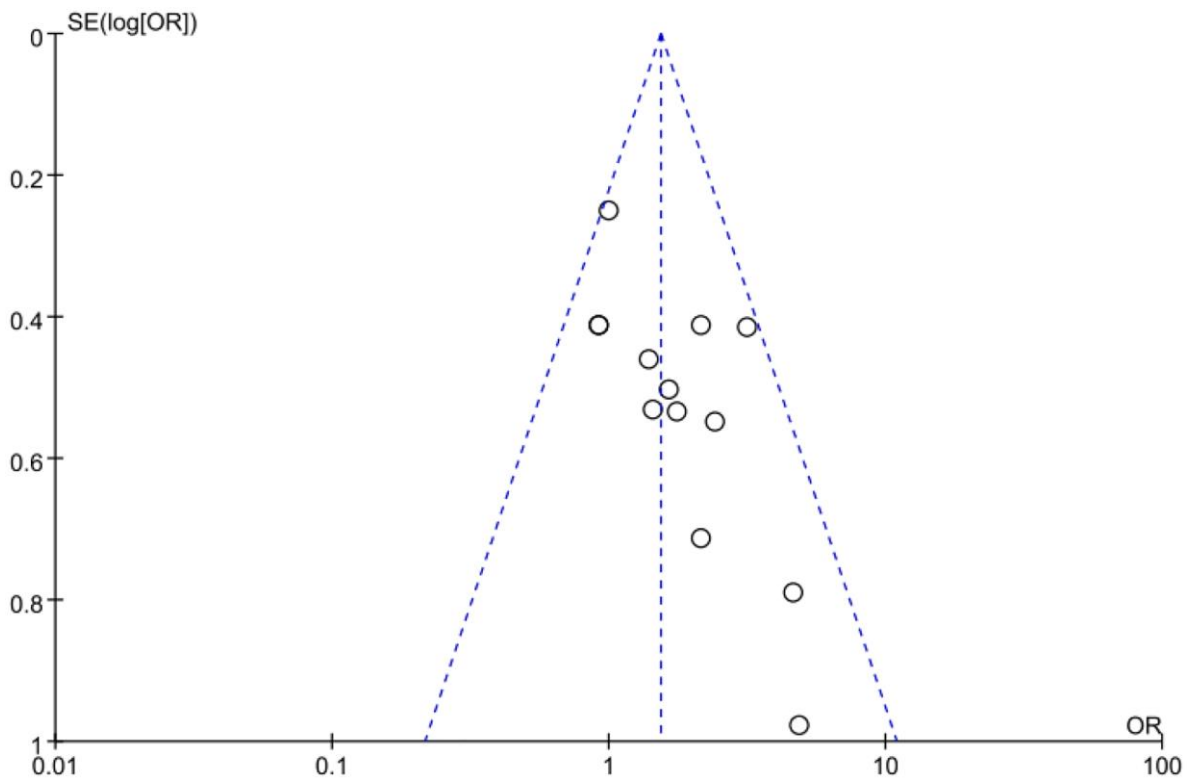
Supplementary Figure 20. Funnel plot of the odds ratio for the correlation of E-cadherin expression with HP infection.



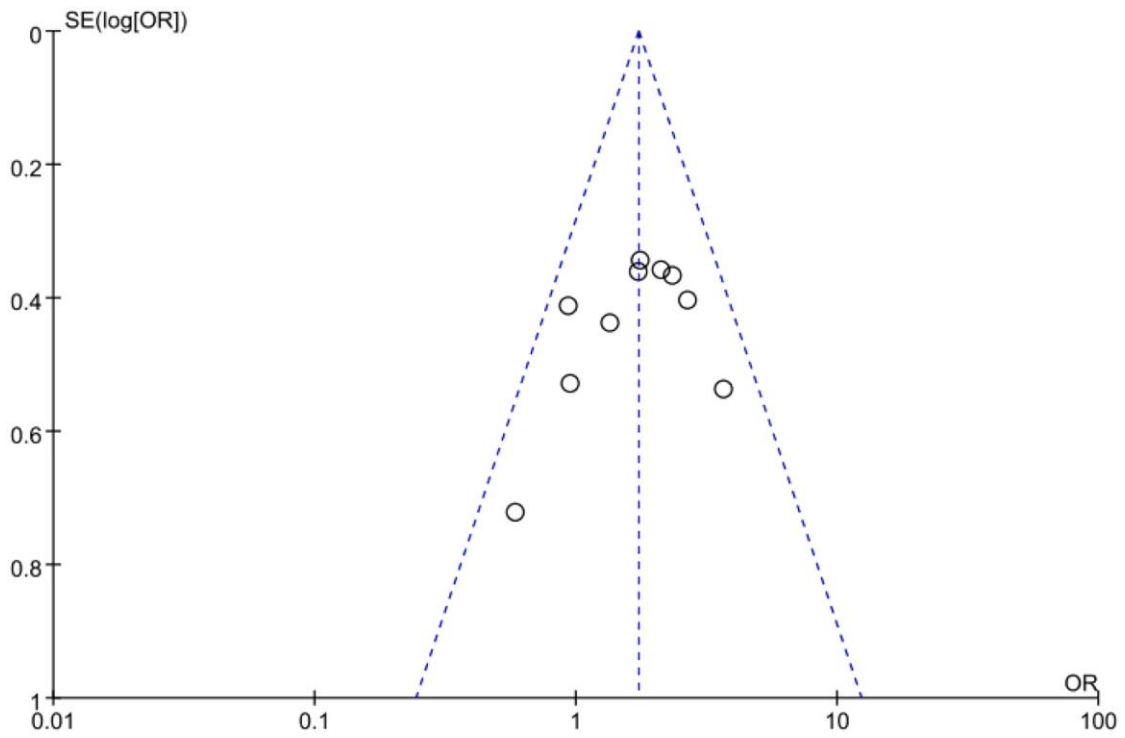
Supplementary Figure 21. Funnel plot of the odds ratio for the correlation of E-cadherin expression with alcohol consumption.



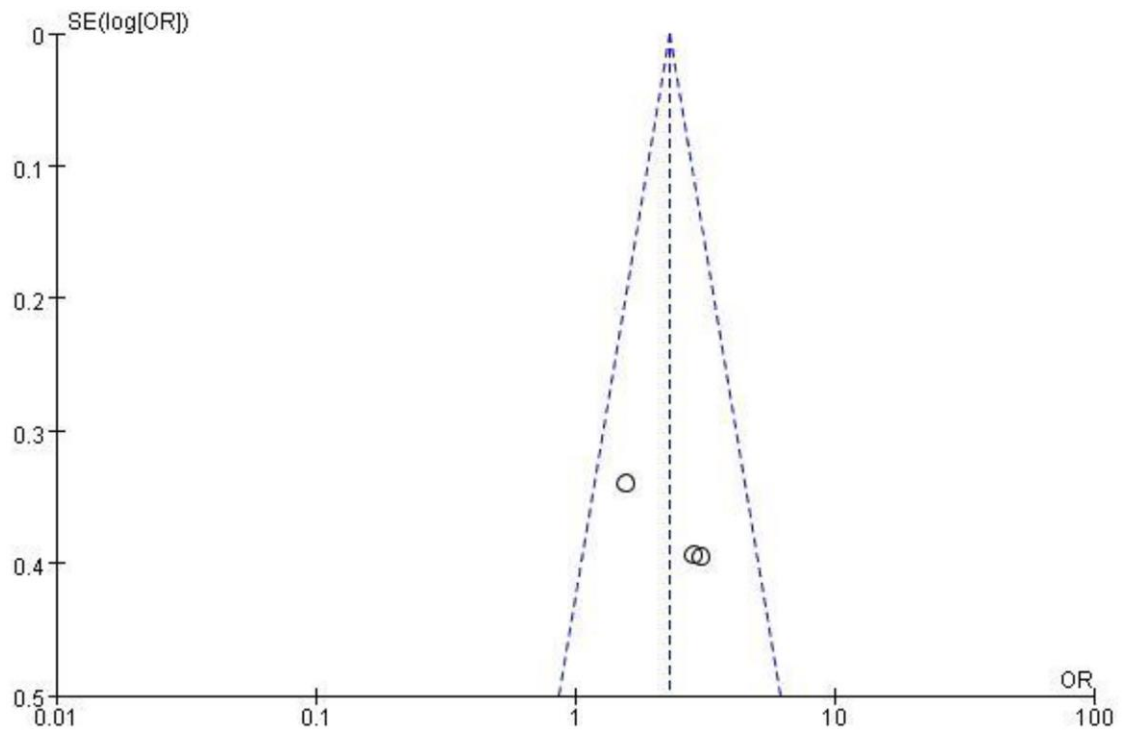
Supplementary Figure 22. Funnel plot of the odds ratio for the correlation of E-cadherin expression with smoking status.



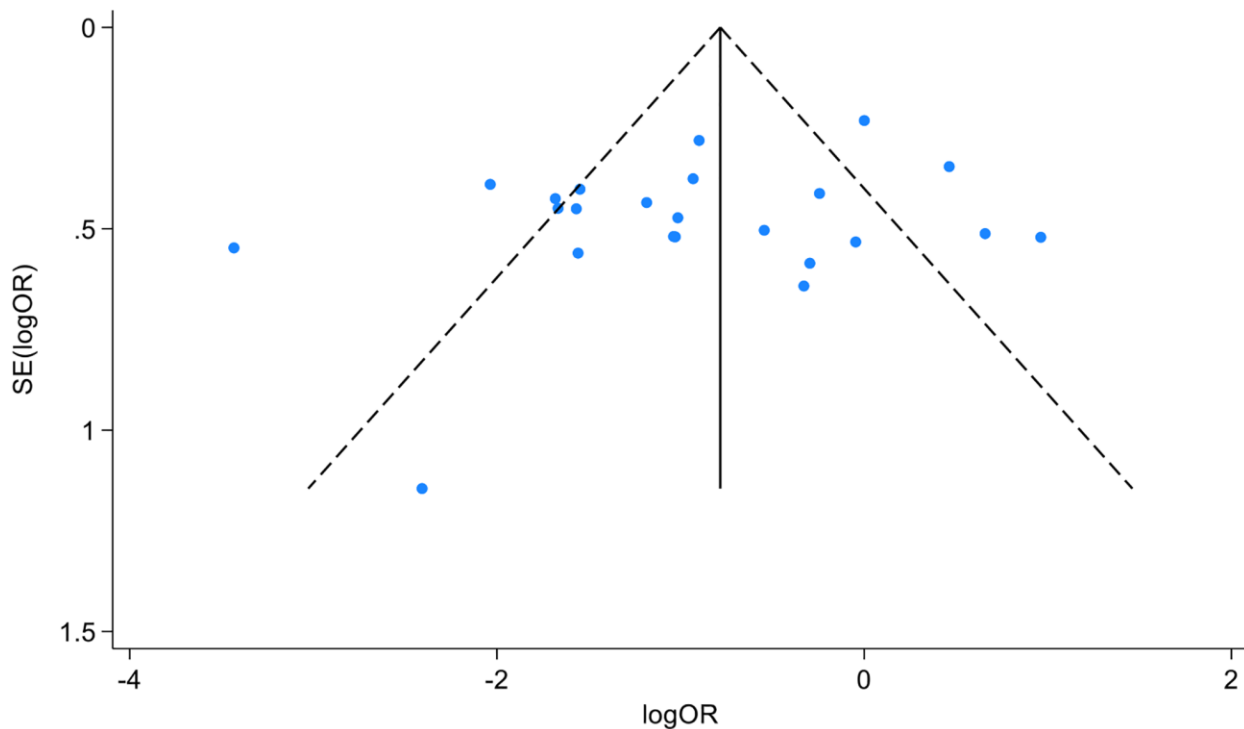
Supplementary Figure 23. Funnel plot of the odds ratio for the correlation of E-cadherin expression with vascular invasion.



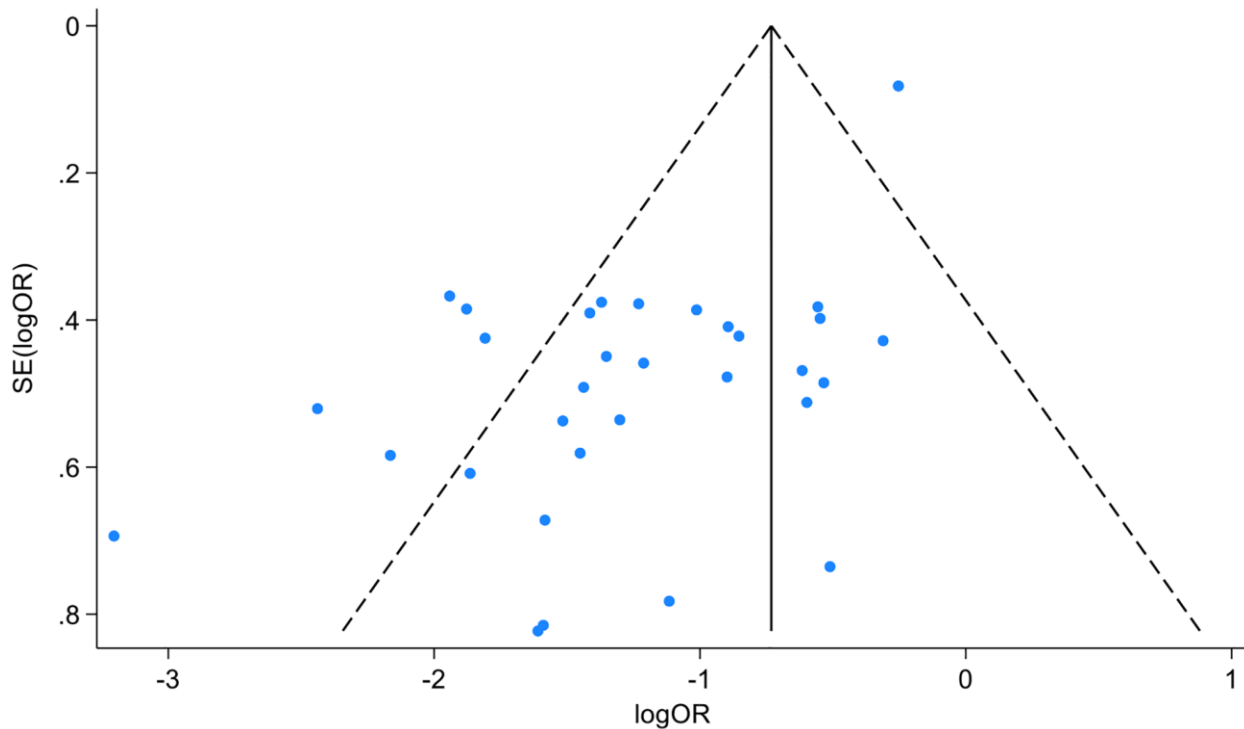
Supplementary Figure 24. Funnel plot of the odds ratio for the correlation of E-cadherin expression with tumor size (≥5 cm vs. <5 cm).



Supplementary Figure 25. Funnel plot of the odds ratio for the correlation of E-cadherin expression with tumor size (≥6 cm vs. <6 cm).



Supplementary Figure 26. Funnel plot of the odds ratio for the correlation of E-cadherin expression with TNM stage.



Supplementary Figure 27. Funnel plot of the odds ratio for the correlation of E-cadherin expression with differentiation grade.