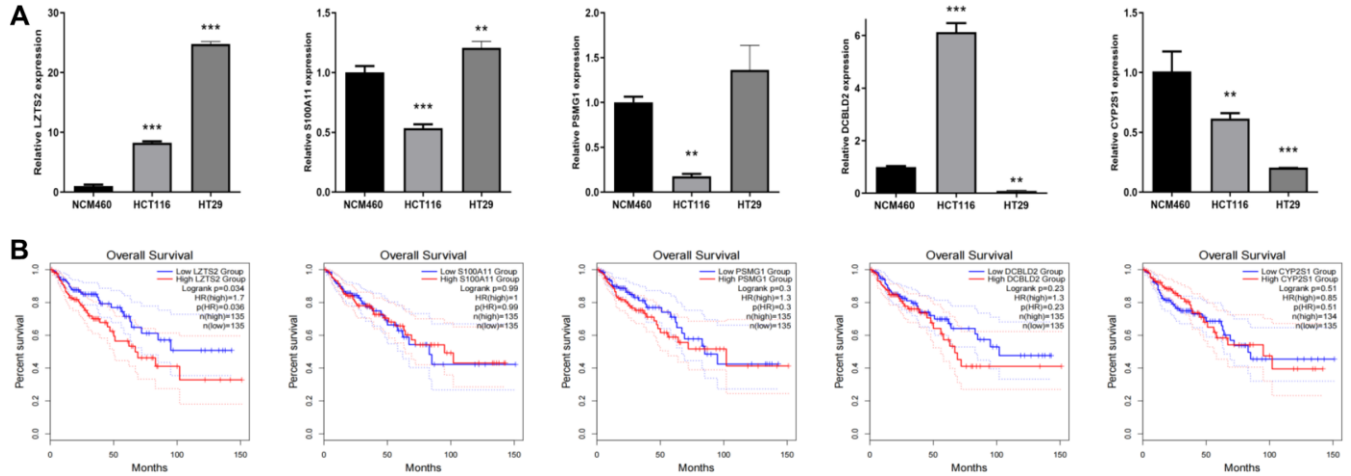
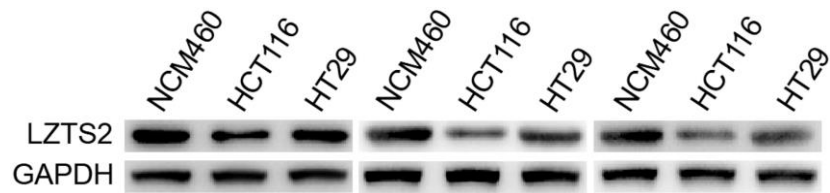


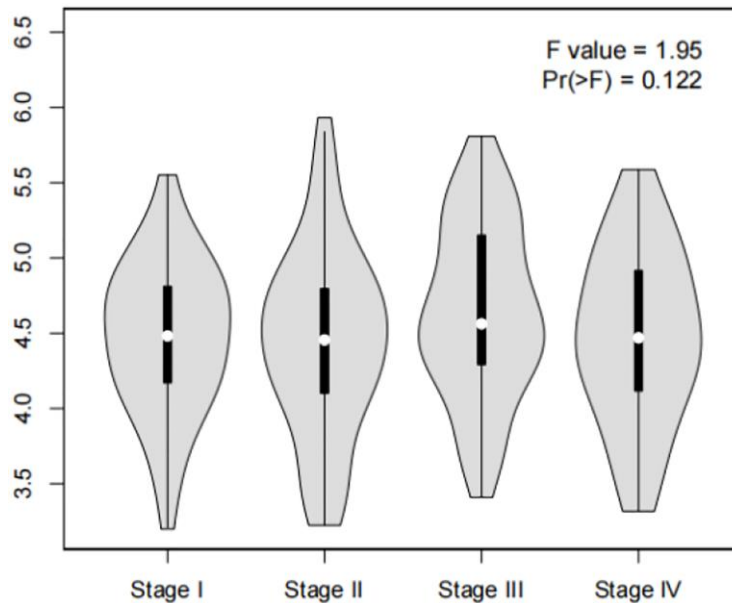
**SUPPLEMENTARY FIGURES**



**Supplementary Figure 1. Identification of key gene.** (A) The LZTS2 expression level in NCM460 cells and CC cell lines. (B) The prognostic analysis of LZTS2 in CC patients.



**Supplementary Figure 2.** The expression of LZTS2 in NCM460 cells and CC cell lines through WB analysis.



**Supplementary Figure 3.** The level of LZTS2 in different stages in CC through the GEPIA2 database.