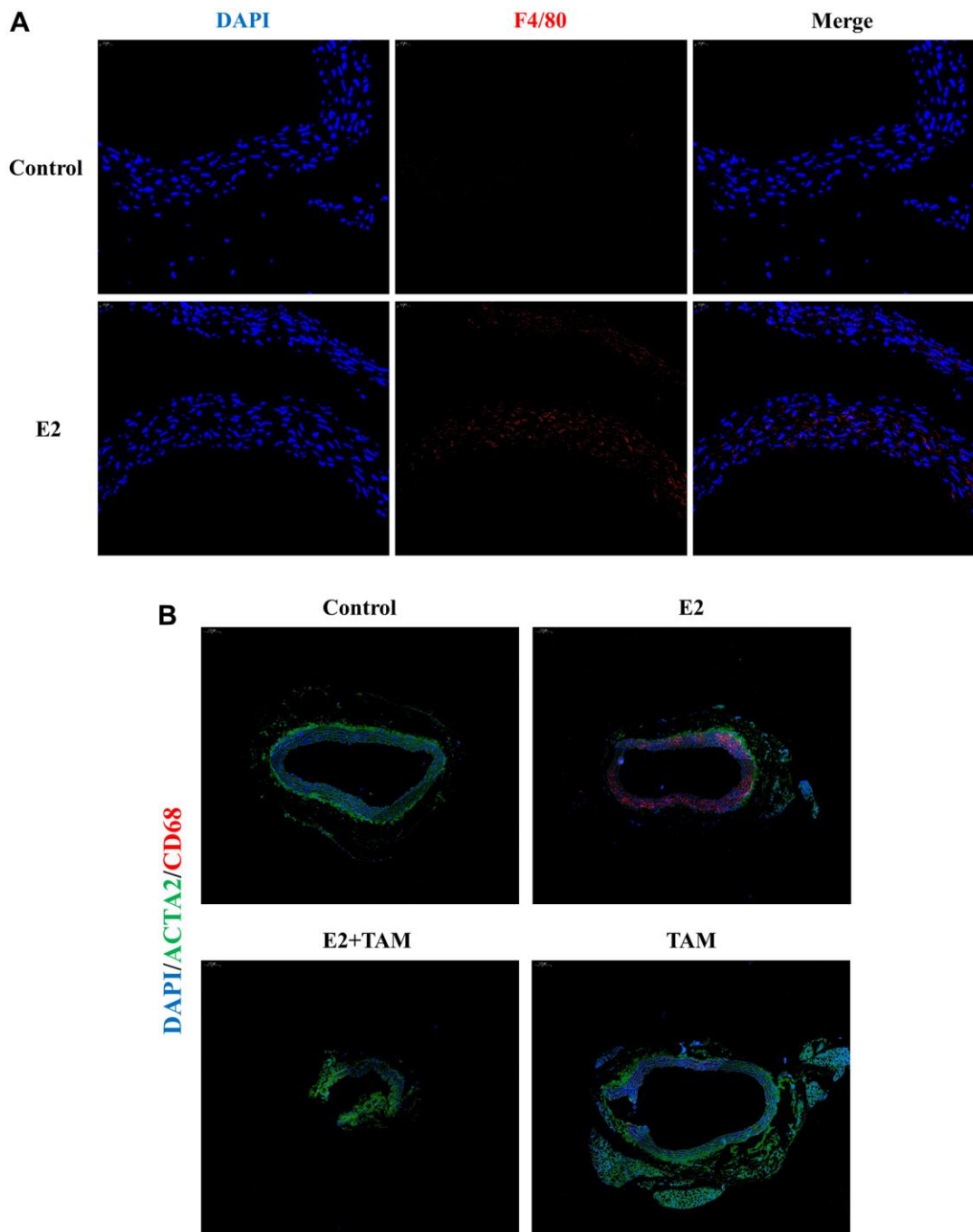
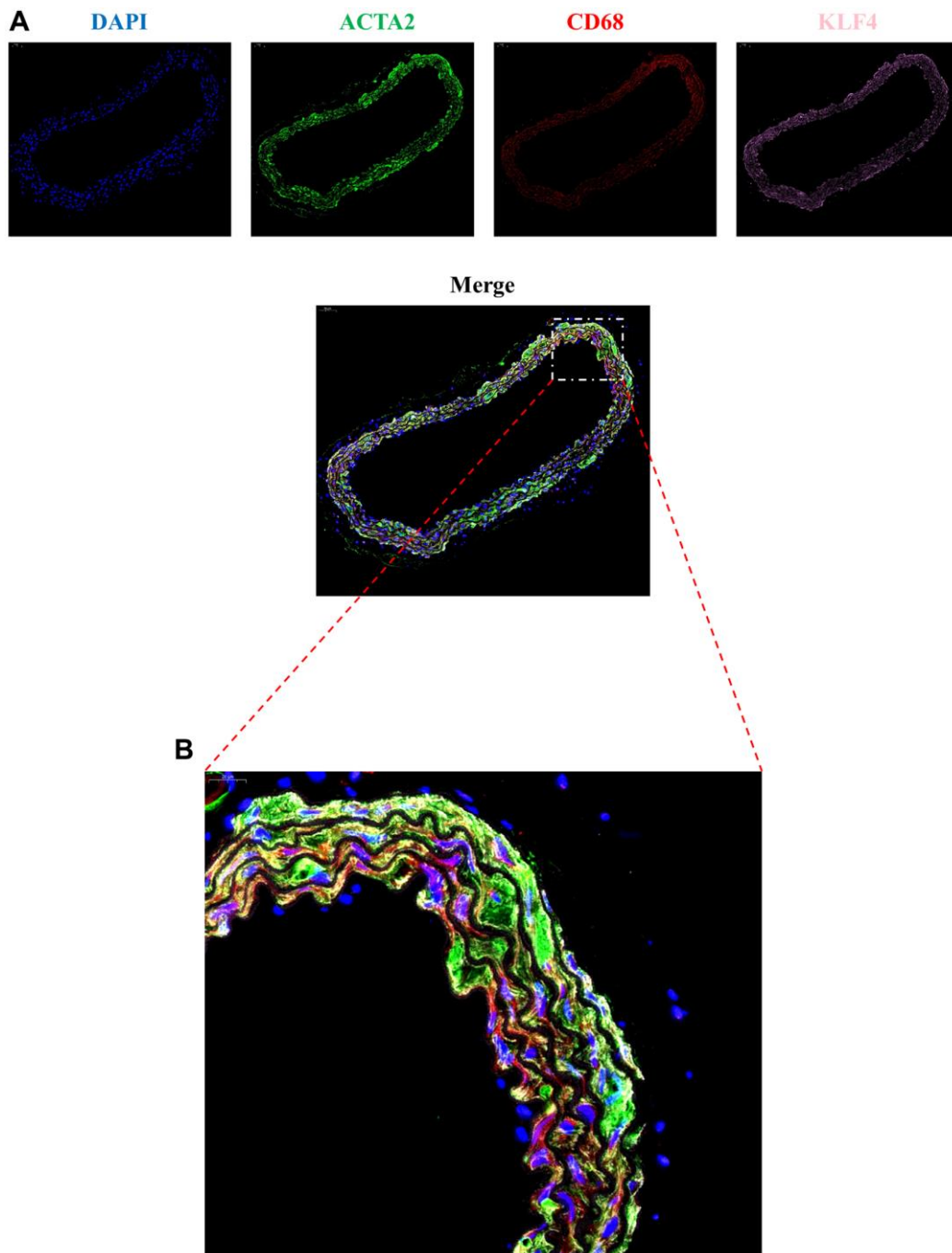


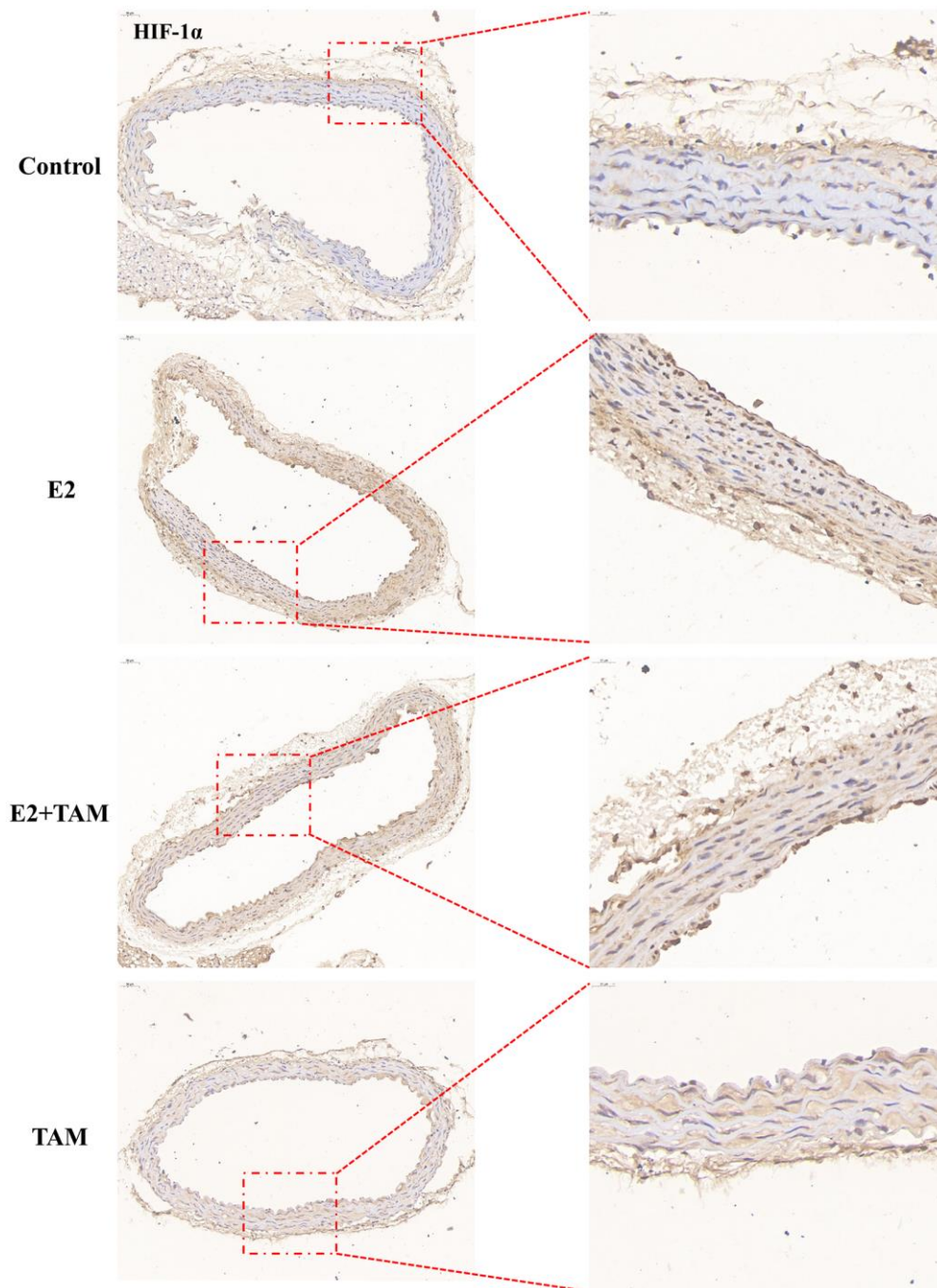
SUPPLEMENTARY FIGURES



Supplementary Figure 1. Immunofluorescence staining of mouse aortic cell phenotypic markers. (A) Mouse aortic tissue sections were done for immunofluorescence staining for macrophage markers (F4/80). Magnification 400 \times . (B) Mouse aortic tissue sections were done for immunofluorescence double staining for smooth muscle cell marker (ACTA2) and macrophage marker (F4/80). Magnification 100 \times .



Supplementary Figure 2. Immunofluorescence staining of KLF4, a phenotypic transforming switch in vascular smooth muscle cells. (A) Immunofluorescence triple staining for ACTA2, CD68, and KLF4 was done on aortic sections from E2-intervened mice. Magnification 200×. (B) Magnification 630×.



Supplementary Figure 3. Expression of HIF-1 α in the aorta of different groups of mice.