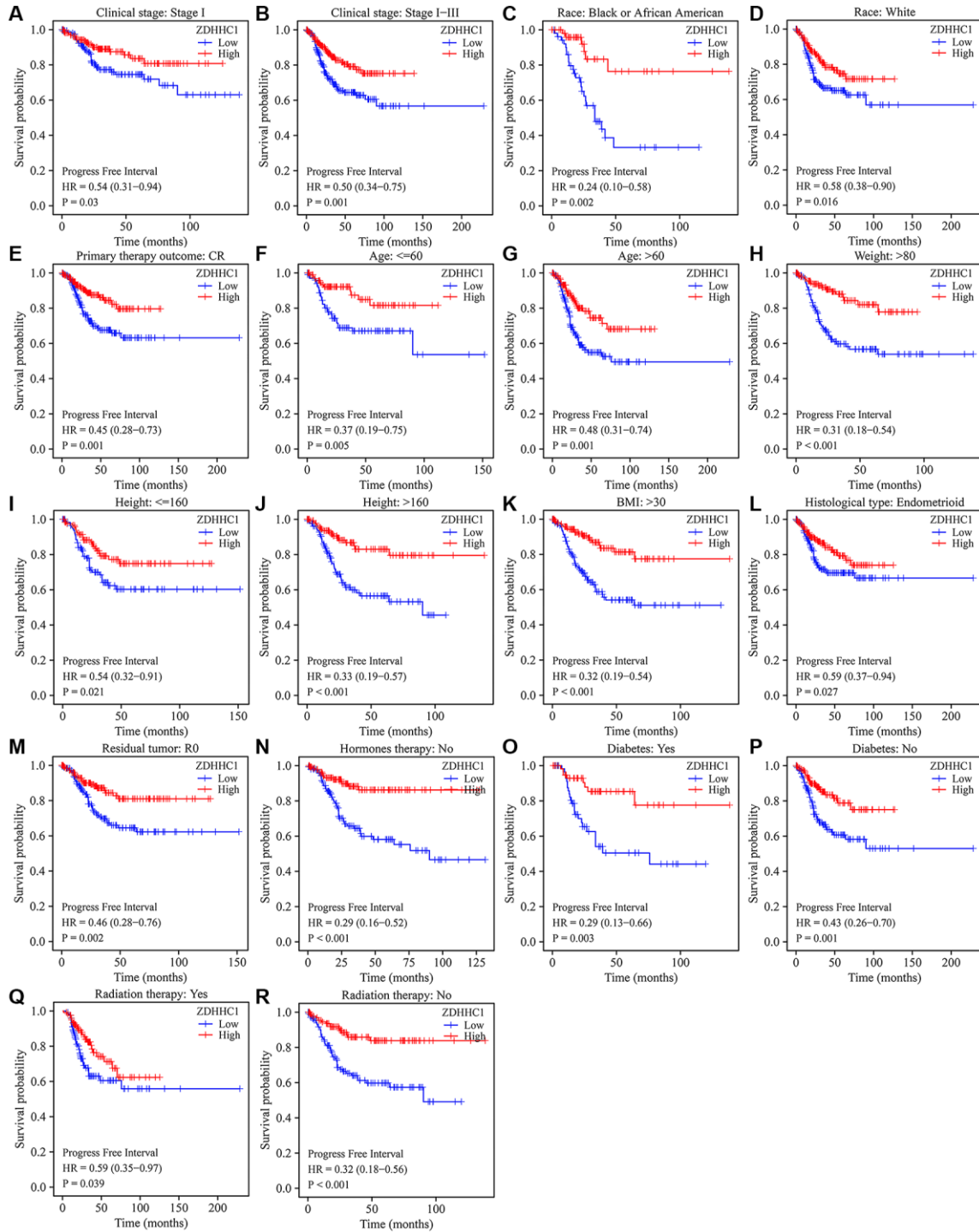
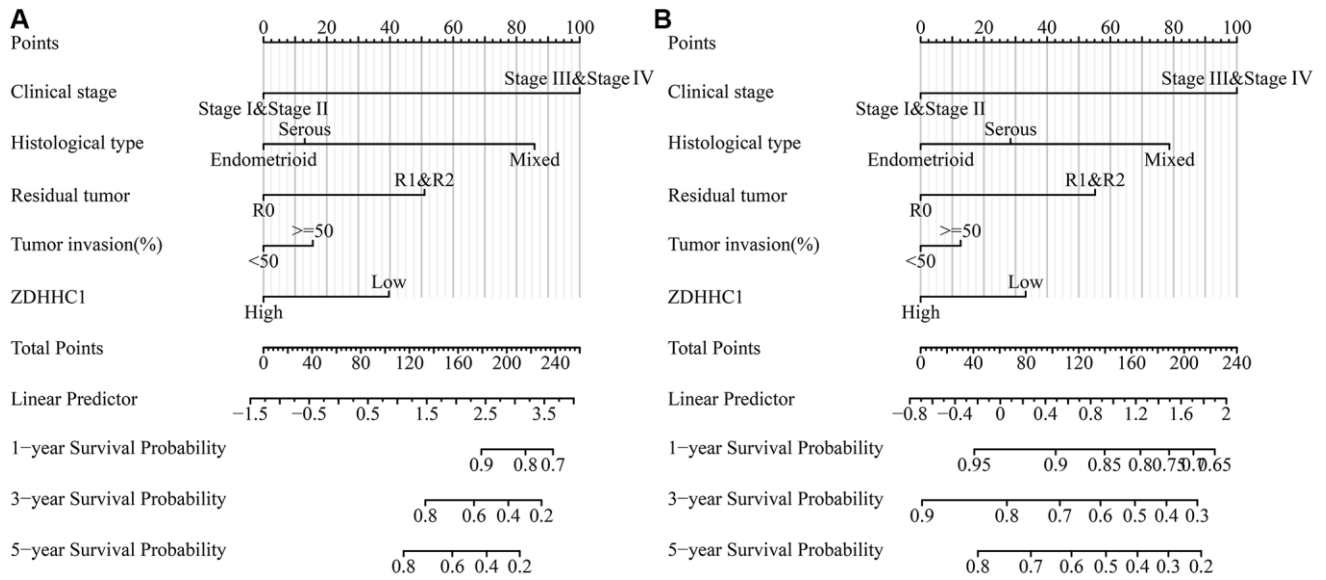


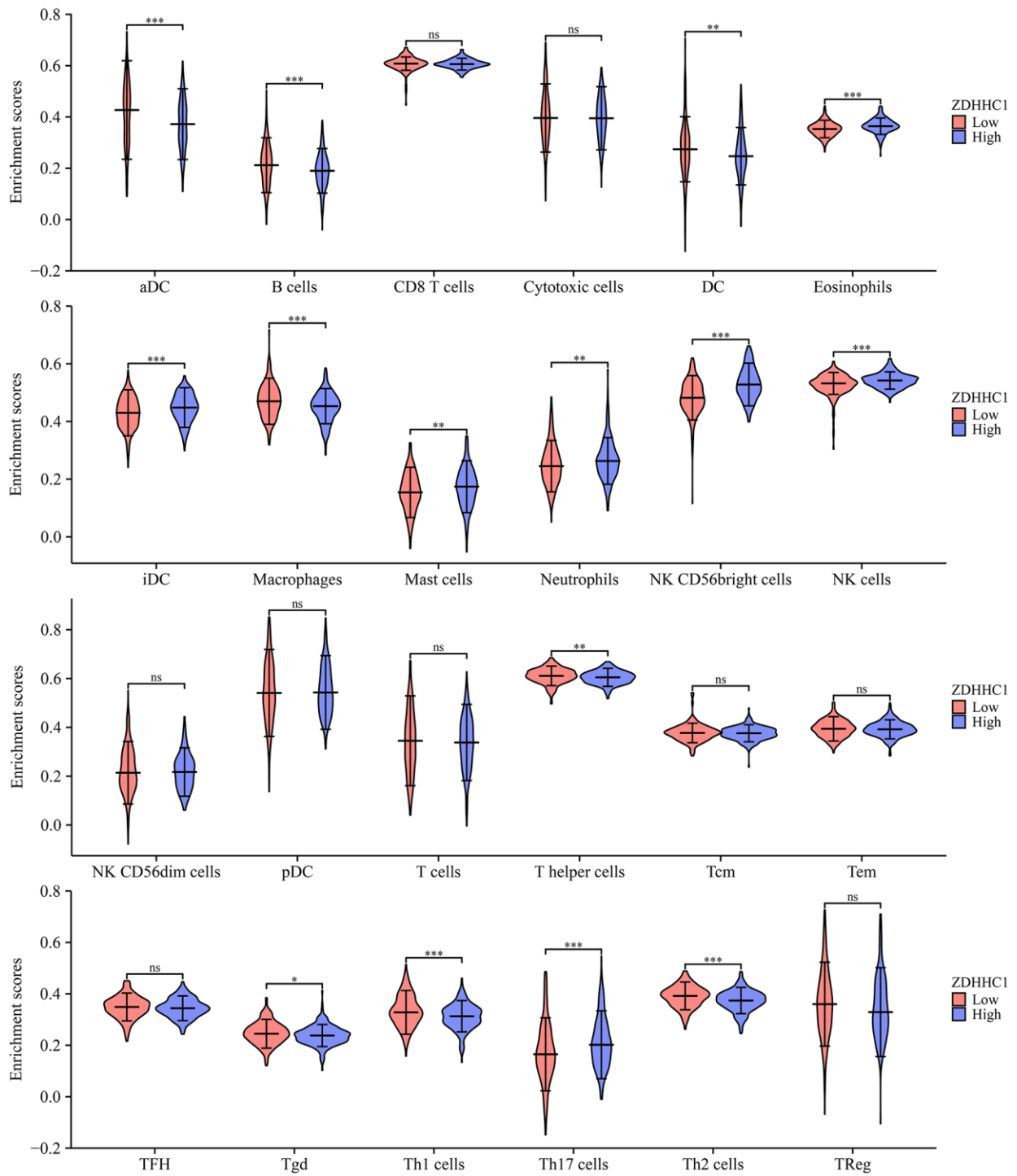
SUPPLEMENTARY FIGURES



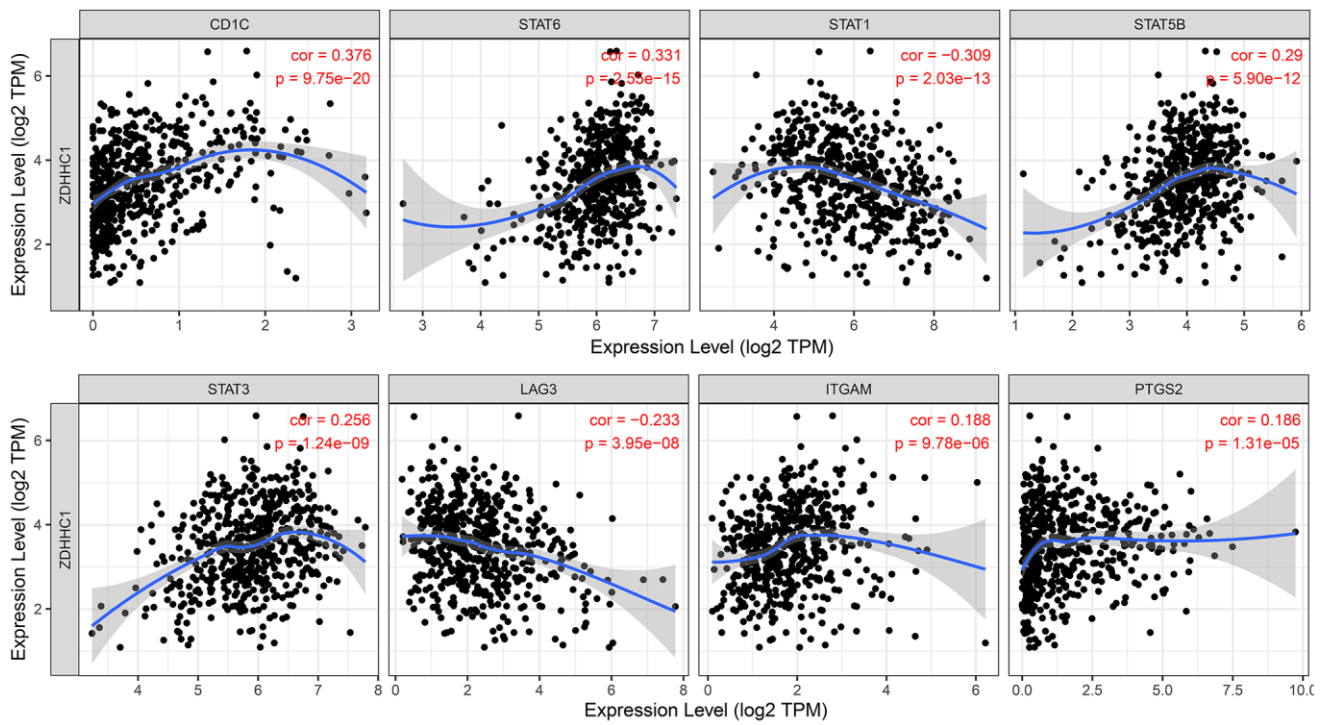
Supplementary Figure 1. ZDHHC1 expression is related to DSS in subgroups of patients with UCEC. (A) Tumor stage I. **(B)** Tumor stage I–III. **(C)** Black or African American. **(D)** White. **(E)** CR. **(F)** Age ≤60. **(G)** Age >60. **(H)** Weight >80 kg. **(I)** Height ≤160 cm. **(J)** Height >160 cm. **(K)** BMI >30. **(L)** Histological type of endometrioid. **(M)** R0. **(N)** Without hormone therapy. **(O, P)** With/without diabetes. **(Q, R)** With/without radiation therapy. Abbreviations: UCEC: uterine corpus endometrial carcinoma; DSS: disease-specific survival; CR: complete response; R0: residual tumor.



Supplementary Figure 2. Prognostic nomograms based on ZDHHC1 expression and DSS and PFI of UCEC patients. (A) DSS; (B) PFI.



Supplementary Figure 3. Tumor-infiltrating immune cells in high- and low-ZDHHC1 groups.



Supplementary Figure 4. Correlation between ZDHHC1 overexpression and immune cell markers.