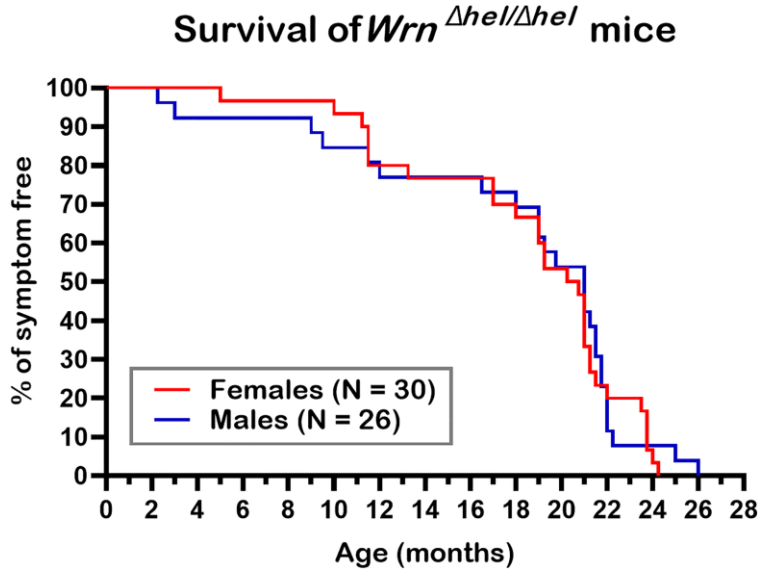


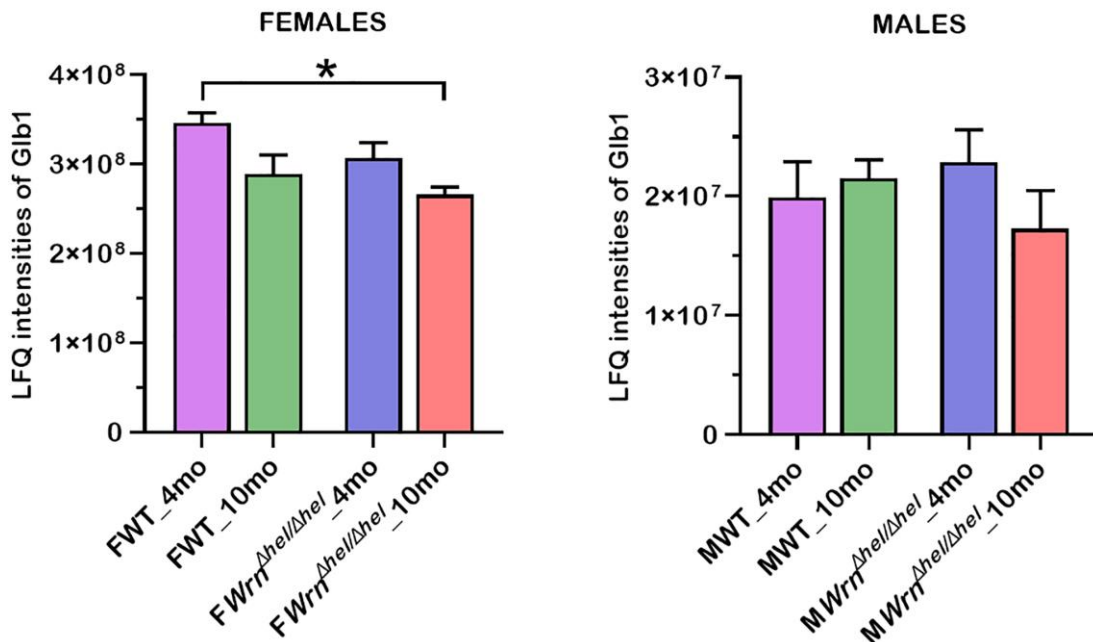
SUPPLEMENTARY FIGURES



Supplementary Figure 1. Impact of the *Wrrn* <sup>$\Delta$ hel/ $\Delta$ hel</sup> genotype on the lifespan of males versus females. The graph represents the percentage of disease-free animals with age. The number of mice in each group is indicated.

Age = 0.0083  
 Genotype = 0.0685  
 Interaction = 0.5961

Age = 0.4776  
 Genotype = 0.8181  
 Interaction = 0.2104



Supplementary Figure 2. Label Free Quantification intensities of Glb1 gene product encoding the senescence-associated  $\beta$ -galactosidase enzyme. All the graphs represent the mean Lfq intensities of each group. Bars represent the SEM. Two-way ANOVA *p*-values for age, genotype, and the interaction (age x genotype) are indicated on top of each graph. Two-way ANOVA followed by Tukey's multiple comparisons test *p*-value < 0.05 are indicated by \* in the graphs for each comparison.