

EphA2 as a phase separation protein associated with ferroptosis and immune cell infiltration in colorectal cancer

Yanling Li¹, Qiu Peng¹, Lujuan Wang²

¹Hunan Cancer Hospital and The Affiliated Cancer Hospital of Xiangya School of Medicine, Central South University, Changsha 410013, Hunan, China

²Hunan Key Laboratory of Tumor Models and Individualized Medicine, The Second Xiangya Hospital of Central South University, Changsha 410011, Hunan, China

Correspondence to: Qiu Peng, Lujuan Wang; **email:** pengqiu@hnca.org.cn, wanglujuan001@csu.edu.cn

Keywords: colorectal cancer, EphA2, liquid-liquid phase separation, ferroptosis, immune cell infiltration

Received: July 6, 2023

Accepted: October 3, 2023

Published: November 16, 2023

Copyright: © 2023 Li et al. This is an open access article distributed under the terms of the [Creative Commons Attribution License](https://creativecommons.org/licenses/by/3.0/) (CC BY 3.0), which permits unrestricted use, distribution, and reproduction in any medium, provided the original author and source are credited.

ABSTRACT

Colorectal cancer is one of the most common malignant tumors in the digestive system, and its high incidence and metastasis rate make it a terrible killer that threatens human health. In-depth exploration of the targets affecting the progression of colorectal cancer cells and the development of specific targeted drugs for them are of great significance for the prognosis of colorectal cancer patients. Erythropoietin-producing hepatocellular A2 (EphA2) is a member of the Eph subfamily with tyrosine kinase activity, plays a key role in the regulation of signaling pathways related to the malignant phenotype of various tumor cells, but its specific regulatory mechanism in colorectal cancer needs to be further clarified. Here, we found that EphA2 was abnormally highly expressed in colorectal cancer and that patients with colorectal cancer with high EphA2 expression had a worse prognosis. We also found that EphA2 can form liquid-liquid phase separation condensates on cell membrane, which can be disrupted by ALW-II-41-27, an inhibitor of EphA2. In addition, we found that EphA2 expression in colorectal cancer was positively correlated with the expression of ferroptosis-related genes and the infiltration of multiple immune cells. These findings suggest that EphA2 is a novel membrane protein with phase separation ability and is associated with ferroptosis and immune cell infiltration, which further suggests that malignant progression of colorectal cancer may be inhibited by suppressing the phase separation ability of EphA2.

INTRODUCTION

Colorectal cancer is the third most prevalent malignancy and the second most deadly, and is a major public health problem worldwide. It is a major public health problem worldwide [1, 2]. Surgery is the treatment of choice for primary colorectal cancer and has the advantages of being effective and non-biologically resistant, but it is risky and traumatic. Radiotherapy and chemotherapy are often used as adjuvant therapies to surgical treatment, but have high toxic side effects. With the improvement of diagnosis and advances in targeted therapy technology, there is an increasing

interest in molecular targets for colorectal cancer that indicate significant effects [3–5].

The Eph receptor family is the largest family of receptor tyrosine kinases and is a key regulator of cell growth, differentiation and motility [6–8]. Eph receptors and their ligands, Ephrin proteins (Eph receptor interacting proteins), play a key role in many pathological states (abnormally elevated RTK activity is a feature of most human cancers), and therefore Eph receptors can be used as potential drug targets [9, 10]. There are 14 Eph receptors in the human genome, which can be subdivided into EphA and EphB subclasses. EphA2 is a

member of the Eph family, and high expression of EphA2 occurs in a variety of tumors, such as liver cancer, breast cancer, colorectal cancers, bladder cancer and glioblastoma, and EphA2 is a key driver of metastasis and a predictor of poor prognosis in several tumors [9, 11–13]. EphA2 has both classical and non-classical modes of driving tumorigenesis. The classical mode means that EphA2 inhibits positive signaling of ligands and tyrosine kinases, thereby suppressing tumorigenesis. Inhibiting Focal Adhesion Kinase (FAK), Protein Kinase B (PKB) and Extracellular Regulated Rotein Kinases (ERK) affects cell motility and survival. The non-classical pathway refers to EphA2 ligands and tyrosine kinase non-dependent activation and phosphorylation. Inflammatory cytokines and growth factors via RSK AKT and Protein Kinase A (PKA) induce phosphorylation of EphA2 Ser897. This phosphorylation is able to localize EphA2 at the frontier of migrating cells, leading to actin cytoskeleton framework assembly and lamellipid membrane formation, promoting and maintaining certain cancer cell functions, such as cell motility and proliferation [14, 15].

In recent years, phase separation of biological macromolecules has gained much attention. Phase separation, also known as biomolecular condensates, is involved in regulating a variety of physiological processes, including gene expression, DNA damage repair, signal transduction, cellular metabolism, and immune regulation, by forming membraneless organelles [15–20]. Multivalent interactions are key in driving phase separation [21, 22]. Dysregulation of phase separation can lead to the formation of abnormal condensates, which can cause a variety of human diseases, such as cancer and neurodegenerative diseases [23, 24]. More and more studies are now also focusing on cell membrane molecules that can also transmit cellular signals through the occurrence of phase separation, including T cell receptors, androgen receptors, receptor tyrosine kinases, etc., [25–27]. Whether EphA2, an important receptor tyrosine kinase, can promote tumor development through the occurrence of phase separation has not been reported.

Here, we found that EphA2 was abnormally highly expressed in colorectal cancer tissues, and patients with high EphA2 expression had a worse prognosis. Interestingly, we found that EphA2 has multiple intrinsically disordered regions (IDRs), which is an important basis for the occurrence of phase separation [28, 29]. Indeed, we also further confirmed in the cells that EphA2 can undergo phase separation at the cell membrane. The EphA2 phase separation was significantly disrupted when treated with ALW-II-41-27, an inhibitor of EphA2. In addition, we also found that EphA2 expression was significantly correlated

with the expression of ferroptosis-related genes and the infiltration of immune cells. These results suggest that EphA2 may perform its tumor-promoting function through its phase-separating properties, which also provides a possibility to treat tumors by developing drugs that target EphA2 phase separation.

MATERIALS AND METHODS

Expression analysis

UALCAN (<http://ualcan.path.uab.edu/>) is a comprehensive website for analyzing canceromics data. We used UALCAN to analyze mRNA and protein expression levels of EphA2 in colorectal cancer samples and normal samples from The Cancer Genome Atlas (TCGA) and Clinical Proteomic Tumor Analysis Consortium (CPTAC) databases.

We analyzed the mRNA expression levels of EphA2 in colorectal cancer tissues and normal tissues using two datasets numbered GSE21815 and GSE37182 from the Gene Expression Omnibus (GEO) database.

Immunohistochemical analysis (IHC)

The Human Protein Atlas database (HPA) (<http://www.proteinatlas.org>) contains protein expression images in various cells, tissues and organs. We analyzed the immunohistochemical images of EphA2 in colorectal cancer tissues and normal tissues using HPA database.

Survival analysis

The Kaplan Meier plotter database (<http://kmplot.com/analysis/>) is able to assess the correlation between gene expression and survival in a variety of tumor types. We used this database to analyze the correlation between EphA2 expression and patient survival in colorectal cancer patients.

Tumor mutational burden (TMB) and microsatellite instability (MSI) analysis

Gene expression data from the TCGA database for colorectal cancer and the corresponding clinical information were used. The correlation of EphA2 expression with TMB and MSI was examined using Spearman's correlation analysis.

Analysis of internal disordered regions (IDRs) and net charge per residue (NCPR) of proteins

The amino acid sequence of EphA2 was uploaded to the Predictor of Natural Disordered Regions (PONDR) database (<http://www.pondr.com>) to analyze

its internal disordered region. The Classification of Intrinsically Disordered Ensemble Regions (CIDER) database ([http:// 157.245.85.131:8000/CIDER/](http://157.245.85.131:8000/CIDER/)) allows the calculation of many different parameters associated with disordered protein sequences. We used this database to analyze the net charge per residue of EphA2 amino acid sequence.

Live cell immunofluorescence assay

The cells were incubated in an incubator for approximately 6 hours and then transfected with the EGFP-EphA2 plasmid when the cells were sufficiently attached to the wall. Leica TCS SP8 confocal microscope was used for imaging. Cells were imaged on a heated plate (37°C) at all times during the imaging process.

Fluorescence recovery after photobleaching (FRAP) assay

FRAP was performed using a Leica TCS SP8 confocal microscope and 2.4 mW laser intensity for bleaching at room temperature, and a 63 × /1.4 oil immersion objective and photomultiplier detector for imaging. Considering the size of the droplets, different droplets and target areas were selected for the FRAP experiments in cells, and in each FRAP experiment, another region with the same fluorescence intensity as the droplet size used for photobleaching was recorded for fluorescence intensity correction.

RESULTS

EphA2 is aberrantly highly expressed in colorectal cancer and is associated with prognosis

To verify the correlation between EphA2 and colorectal cancer, we found that the mRNA expression level of EphA2 was significantly higher in colorectal samples than in normal tissues using TCGA samples from the UALCAN database (<https://ualcan.path.uab.edu/index.html>), and similarly, we analyzed the protein expression level of EphA2 using CPTAC samples and also found that its expression was significantly higher in colorectal cancer tissues than in normal samples (Figure 1A). We further analyzed two datasets in the GEO database (GSE21815 and GSE37182) and found that EphA2 expression was significantly upregulated in tumors (Figure 1B). Then, we assessed the protein expression levels of EphA2 in normal and colorectal cancer tissues by tissue samples from the Human Protein Atlas database. The immunohistochemical (IHC) staining data as shown in Figure 1C revealed that the protein expression level of EphA2 was significantly elevated in tumor tissues. Using the Kaplan Meier plotter database (<http://kmplot.com/analysis/>), we analysed the relevance

of EphA2 expression to the prognosis of colorectal cancer patients and found that among 551 colorectal cancer patients, those with high EphA2 expression had a worse prognosis (Figure 1D). MSI and TMB have been used as predictive biomarkers for immunotherapy in a variety of tumours [30–32]. We analysed the correlation between EphA2 expression and MSI and TMB using TCGA colorectal cancer data and found a significant positive correlation between EphA2 expression and MSI and TMB scores (Figure 1E, 1F).

EphA2 shows properties of liquid–liquid phase-separated condensates

Phase separation is the main mechanism for the formation of membraneless compartments in cells and is involved in the regulation of cellular metabolism, signal transduction, gene expression and protein homeostasis. In recent years, researchers have found that phase separation and cancer are closely linked, by affecting DNA repair processes, transcriptional regulation as well as the assembly of important membrane-free compartments in cancer [23, 33–35].

To investigate whether EphA2 can undergo phase separation, we first analysed the internal disordered region and net charge per residue of EphA2 amino acid, which are important factors for phase separation to occur [36–38], using the PONDR and CIDER databases. We found that EphA2 has a significant internal disordered region (IDR) and that its amino acid residues carry a significant net charge (Figure 2A, 2B). To further confirm that EphA2 can undergo phase separation, we transfected GFP-EphA2 fusion plasmids into HEK293 cells and used immunofluorescence assays to find that EphA2 forms puncta on the cell membrane, which may be condensates formed by phase separation. We further found that EphA2 puncta were significantly disrupted after treatment of GFP-EphA2-expressing cells with the phase separation disruption reagent 1,6 hexanediol (Figure 2C, 2D). An important feature of phase-separated condensates is that they exhibit rapid exchange kinetics with their surroundings [39, 40]. To demonstrate the dynamic characteristics of GFP-EphA2 puncta, we performed fluorescence recovery after photobleaching (FRAP) experiments in GFP-EphA2-positive live cells and found that bleaching the GFP-EphA2 puncta could be followed by rapid recovery within a short period of time (Figure 2E, 2F). Furthermore, we found that individual GFP-EphA2 condensates exhibit rapid changes in size and fluorescence intensity, and that when the condensates meet each other they aggregate to form larger puncta (Figure 3A). These results suggest that EphA2 forms punctate structures on cell membranes with properties consistent with liquid-liquid phase separation condensates.

Inhibitors of EphA2 can disrupt its phase separation properties

The ATP-competitive tyrosine kinase inhibitor ALW-II-41-27 (ALW) of EphA2 has been shown to inhibit the growth of a variety of tumour cells *in vitro* and *in vivo* [9, 41]. To investigate the effect of ALW on EphA2 phase separation, we first used molecular docking techniques to demonstrate that ALW can bind to multiple pockets of EphA2 protein (Figure 3B). We also further found, using

FRAP experiments, that the dynamic properties of the bleached GFP-EphA2 phase separation condensate were significantly weaker after treating the cells with ALW (Figure 3C, 3D). These results suggest that inhibitors of EphA2 can disrupt its phase separation properties.

EphA2 is associated with ferroptosis

Ferroptosis is a form of programmed cell death different from apoptosis and necrosis, characterized by the

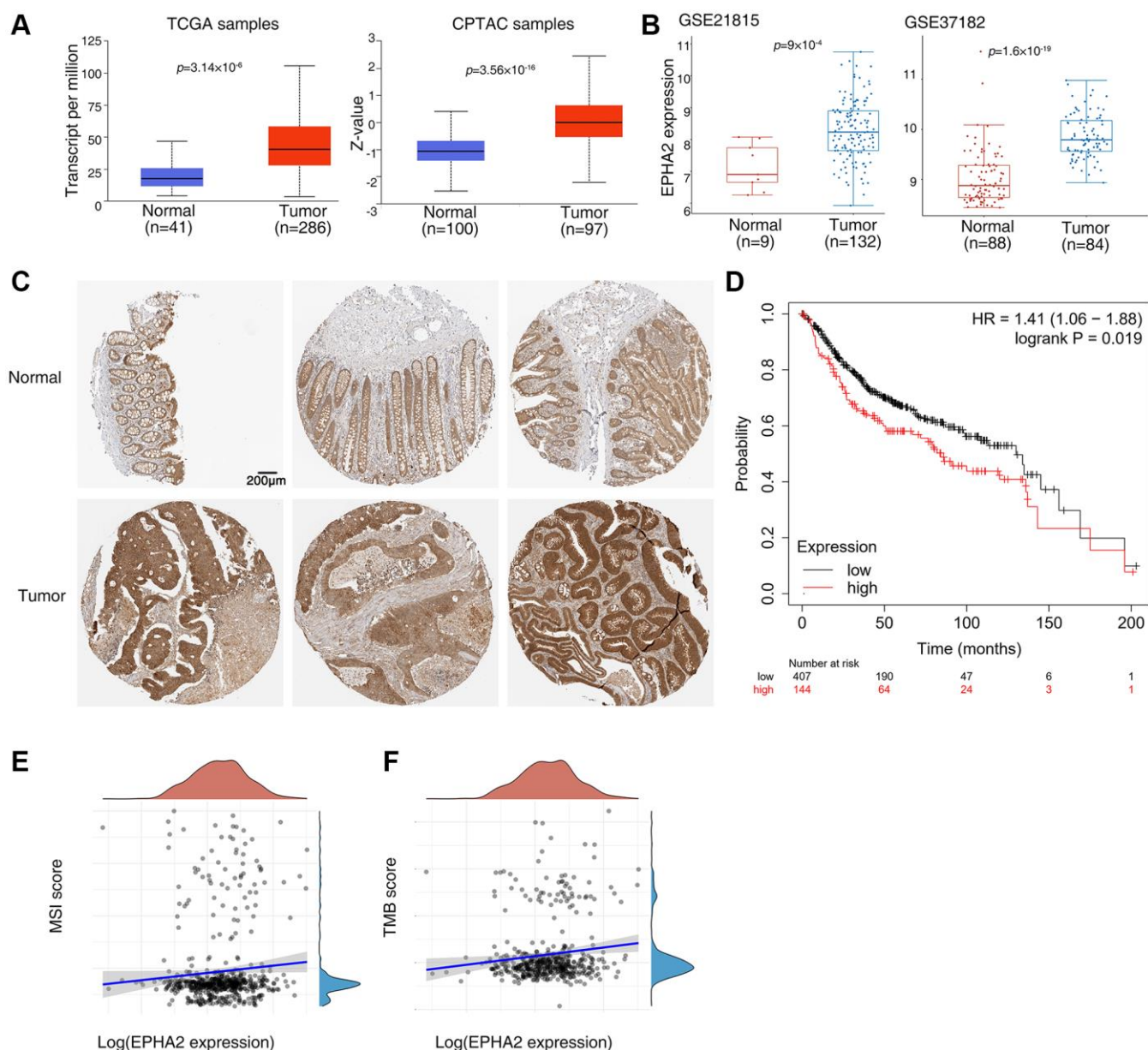


Figure 1. Abnormal expression of EphA2 in colorectal cancer and its relationship with prognosis. (A) Analysis of EphA2 mRNA and protein expression in colorectal cancer tissues and normal tissues using the UALCAN database. (B) Analysis of EphA2 mRNA expression in colorectal cancer tissues and normal tissues using the GEO database. (C) EphA2 expression data from HPA database in colorectal cancer tissues and normal tissues. (D) Overall survival of colorectal patients with differential EphA2 expression. (E, F) Correlation of EphA2 expression with MSI and TMB in colorectal cancer patients.

accumulation of peroxidized lipids in the cell membrane and intracellular reactive oxygen species clusters up to lethal levels, mainly involving biological processes such as glutathione metabolism, iron metabolism, lipid metabolism and oxidative stress. In recent years, numerous studies have identified the role of ferroptosis in anti-tumour, and targeting ferroptosis-related mechanism pathways can effectively inhibit tumourigenesis and development [42–44]. To explore the relationship between EphA2 and ferroptosis, we first analysed differential gene expression in samples with differential EphA2 expression using TCGA colorectal

cancer samples, and in total we identified seven up-regulated and 92 down-regulated genes (Figure 4A, 4B). We further performed KEGG and GO analysis on the differential genes regulated by EphA2 and found that these gene-enriched pathways are closely related to tumor development, such as p53, HIF-1, PI3K and other signaling pathways (Figure 4C, 4D). Furthermore, we analyzed the correlation between EphA2 expression and the expression of common ferroptosis-related genes in colorectal cancer and found that EphA2 expression was significantly correlated with the expression of several ferroptosis-related genes (Figure 5A, 5B). These results

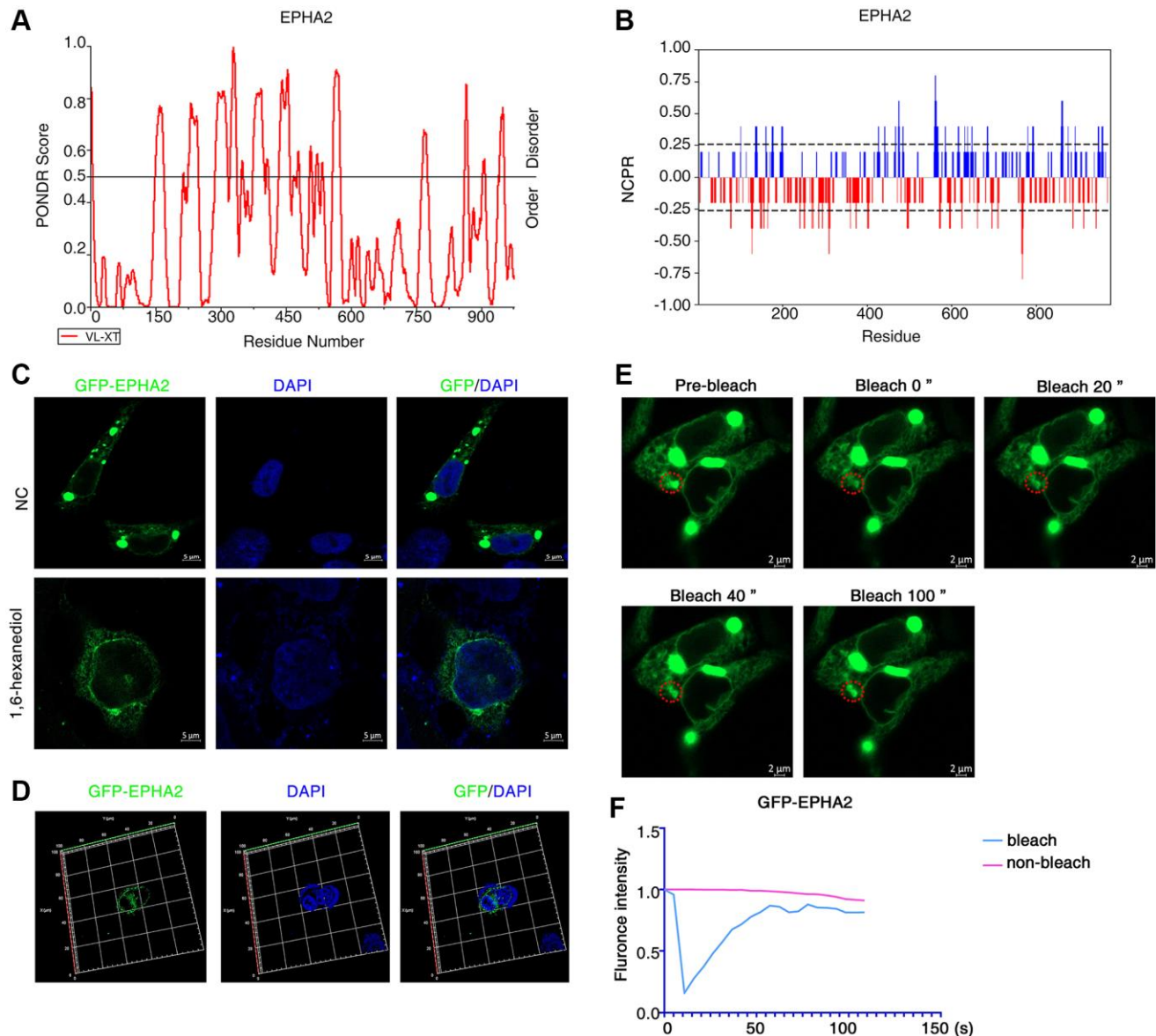


Figure 2. EphA2 can undergo phase separation in cells. (A, B) Predictions of IDRs and NCPR of EphA2 using PONDR and CIDR database based on their amino acid positions and sequences. (C) Transfection of GFP-EphA2 in HEK293 cells and immunofluorescence detection of EphA2 puncta in the presence or absence of 1,6 hexanediol treatment. (D) Transfection of GFP-EphA2 in HEK293 cells and detection of EphA2 puncta by immunofluorescence 3D imaging. (E) Representative images of FRAP experiment of HEK293 cells that had been transfected with GFP-EphA2 expression vector. The red circle highlights the puncta undergoing targeted bleaching. (F) Quantification of FRAP fluorescence intensity data for GFP-EphA2 puncta.

suggest that EphA2 may influence the development of colorectal cancer through the regulation of ferroptosis.

EphA2 is associated with immune cell infiltration

Tumour immunotherapy, represented by immune checkpoint inhibitors, especially PD1/PD-L1, is a promising therapeutic approach that has been developed in recent years. It has shown significant efficacy in some patients with advanced colorectal cancer [45]. To explore the relationship between EphA2 expression and immune cell infiltration in colorectal cancer, we analyzed the RNA-seq expression profile data of TCGA as well as clinically relevant information and found that EphA2 expression was significantly and positively correlated with macrophage, neutrophil and myeloid dendritic cell infiltration (Figure 6A, 6B). We further analyzed the correlation between EphA2 expression and immune checkpoint expression using TCGA expression profile data and found no significant correlation between

EphA2 and common immune checkpoints such as CD274, CTLA4, TIGIT, PDCD1, etc. (Figure 6C). These results suggest that EphA2 may influence colorectal carcinogenesis and progression through the infiltration of some immune cells.

DISCUSSION

EphA2 belongs to the Eph receptor family, which is the largest family of receptor tyrosine kinases. Eph receptors can be classified into EphA and EphB types depending on their sequence homology, structure, affinity for the ligand to which they bind, and distribution. Humans express nine EphA receptors and five EphB receptors [46]. EphA2 is highly expressed in many tumours and is of prognostic importance. For example, EphA2 may promote the progression of squamous head and neck cancer and is expected to be a prognostic indicator [47]. In non-small cell lung cancer, EphA2 reduces progression-free survival and overall

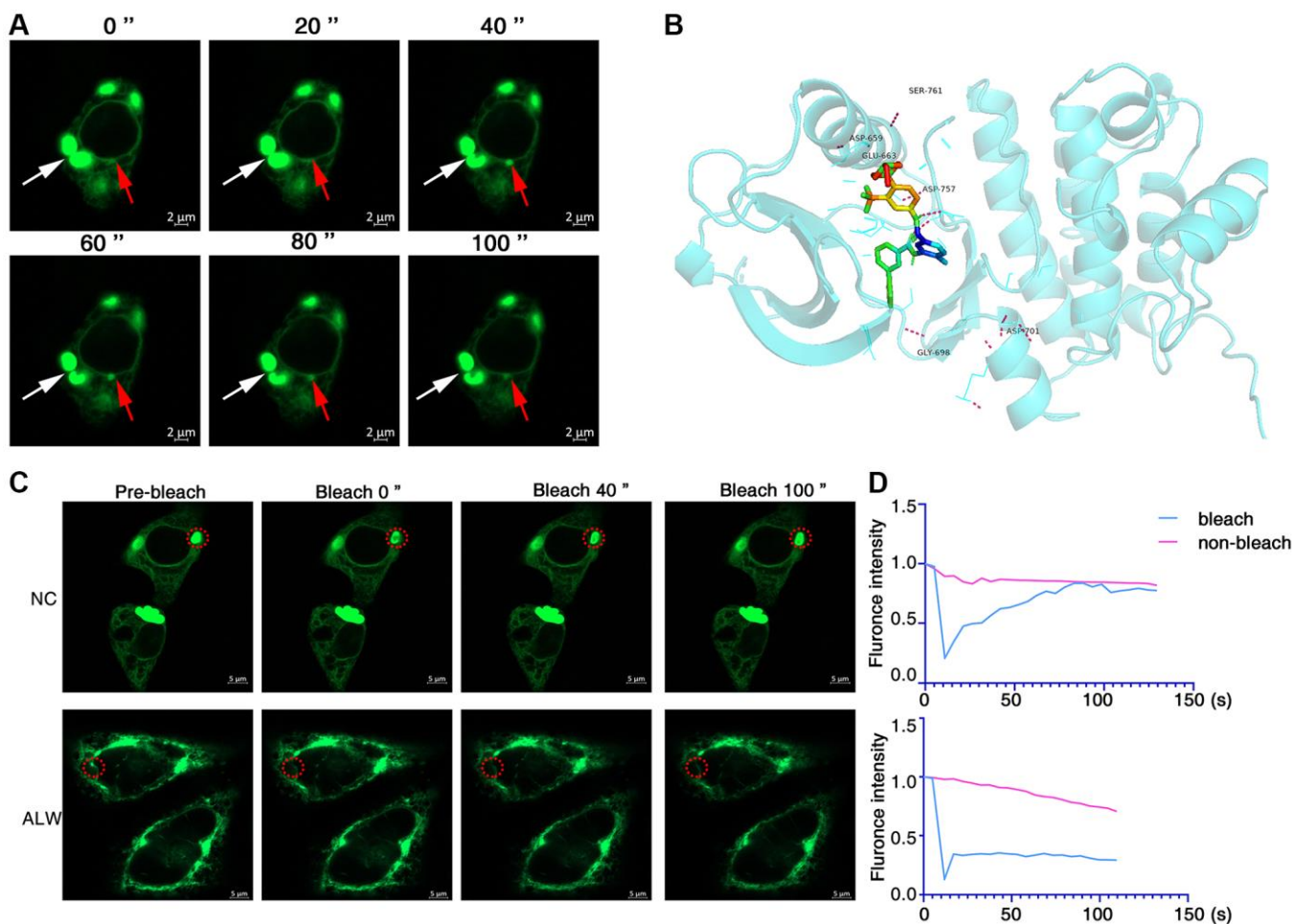


Figure 3. ALW can disrupt EphA2 phase separation condensates. (A) Immunofluorescence observation of the dynamics of GFP-EphA2 condensates in living cells. The red arrow highlights the dynamic process of GFP-EphA2 condensates at different times. (B) Molecular docking showing the binding site of ALW to EphA2. (C) Transfection of GFP-EphA2 in HEK293 cells and FRAP experiment detection of EphA2 puncta in the presence or absence of ALW treatment. (D) Quantification of FRAP fluorescence intensity data for GFP-EphA2 puncta.

survival of patients [48]. In gastric cancer, EphA2 can promote tumor cell progression by activating the Wnt signaling pathway [9]. In this study, we found that EphA2 was abnormally highly expressed in colorectal cancer and that patients with high expression had a worse prognosis. In addition, we also found that EphA2 can undergo phase separation and a positive correlation with the expression of ferroptosis-related genes and

immune cell infiltration, but whether other members of the Eph receptor family have similar phenomena in colorectal cancer requires further evidence.

The phase separation is involved in the regulation of cellular metabolism, signal transduction, gene expression and protein homeostasis. It is important for the maintenance of homeostasis in the organism.

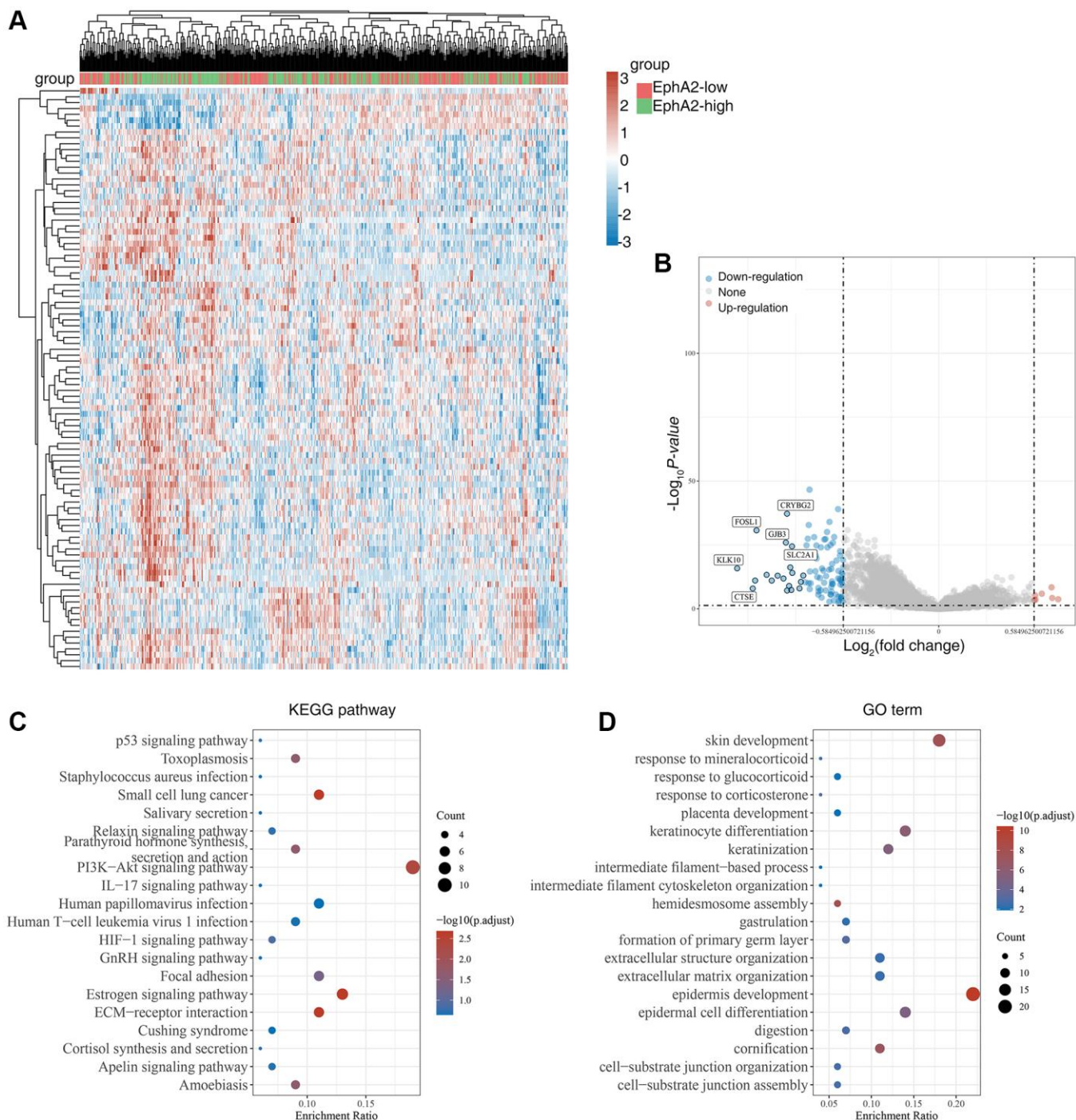


Figure 4. Biological functions of EphA2 in colorectal cancer samples. (A) Heat map showing differentially expressed genes in colorectal cancers with high and low expression of EphA2. (B) Venn diagram showing EphA2-regulated differentially expressed genes. (C, D) KEGG and GO analyses of EphA2-regulated differentially expressed genes in colorectal cancers patients.

The relationship between phase separation and cancer has recently attracted much attention [49–51]. In colorectal cancer, SENP1 inhibits RNF168 phase separation, which in turn promotes DNA damage repair and drug resistance in colorectal cancer [34]. NUP98 fusion oncoprotein is a driver of childhood leukaemia. Most NUP98 fusion proteins contain intrinsically disordered regions that are susceptible to liquid-liquid phase separation (LLPS) *in vitro*. Phase separation of NUP98 fusion oncoproteins is required to mediate leukemic transformation [52]. Phosphatidic acid-binding lncRNA SNHG9 promotes LATS1 liquid-liquid phase separation and facilitates oncogenic YAP signaling [53]. In this study, we found that EphA2 has a distinct internal disordered region and that EphA2 can form puncta on cell membranes, further demonstrating that these puncta are formed by LLPS, but further experiments are needed to prove whether EphA2 exerts a pro-cancer function through its phase separation properties. In addition, EphA2 acts as a transmembrane receptor that transmits a variety of extracellular signals into the cell. Whether EphA2 phase-separated condensate can activate downstream signaling pathways by condensing other signaling molecules needs to be further explored. Most previous studies have focused on nuclear proteins such as

transcription factors having phase separation [40, 54], and in our study the membrane receptor EphA2 was found to have phase separation. Recently there is also a growing number of other membrane molecules that can function by phase separation, such as DIAPH3 condensates formed by liquid-liquid phase separation act as a regulatory hub for stress-induced actin cytoskeleton remodeling [55]. CD3 ϵ , a component of TCR, can intrinsically form phase separation with Lck through ionic interactions. The condensate structure significantly promotes Lck-mediated CD3 phosphorylation to yield the amplification of TCR signaling [56].

Ferroptosis is a novel mode of cell death that has been shown to be involved in the development of many cancers and to increase the susceptibility of cancers to radiotherapy, providing a new theoretical basis for the prevention and treatment of cancer. For example, in hepatocellular carcinoma donafenib and GSK-J4 synergistically induce ferroptosis in tumor cells through upregulation of HMOX1 expression [57]. ASCL1 can promote progression of castration-resistant prostate cancer to neurosecretory prostate cancer by mediating ferroptosis resistance [58]. In gastric cancer cells, the HNF4A-BAP31-VDAC1 axis synchronously regulates tumor cell proliferation and ferroptosis [59].

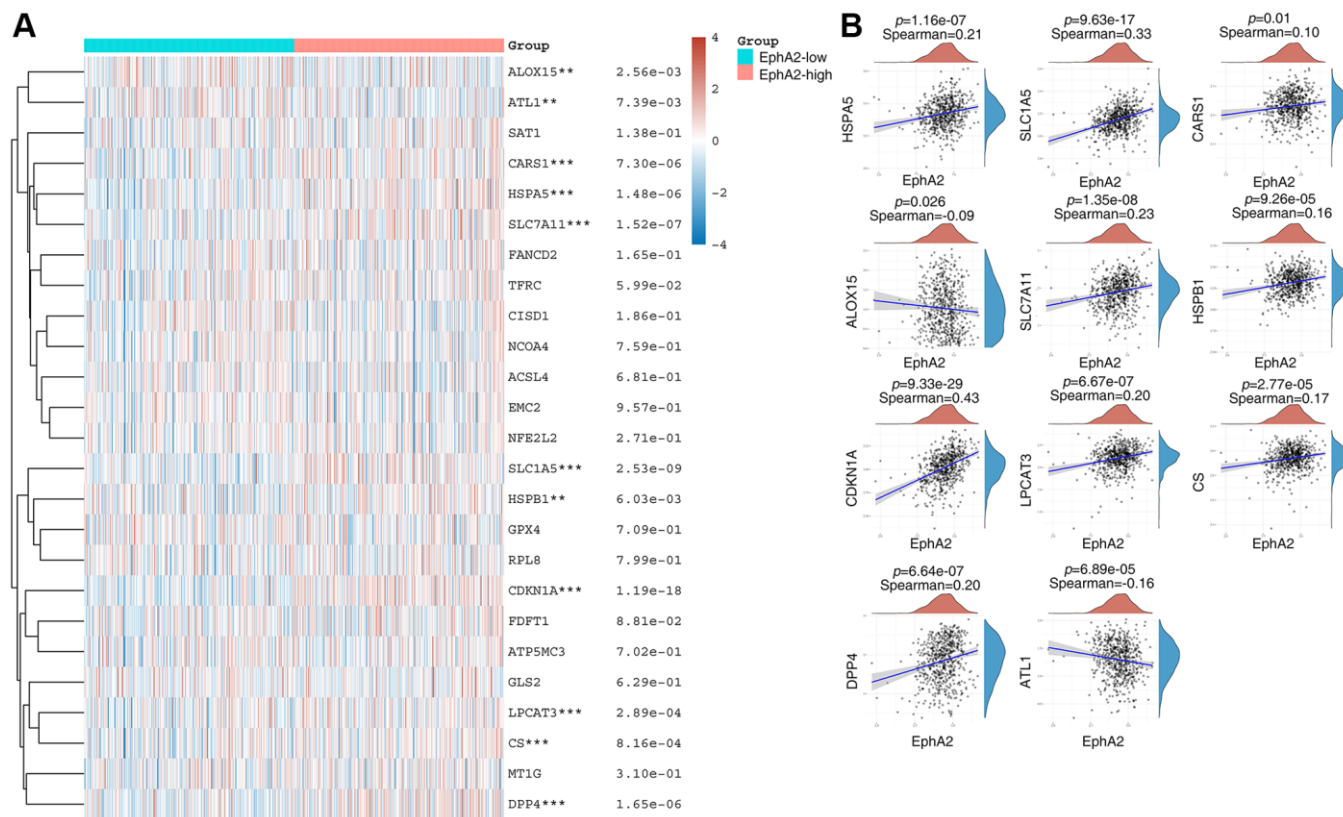


Figure 5. EphA2 is associated with ferroptosis. (A) Heat map showing differential expression of ferroptosis-related genes in EphA2 differentially expressed colorectal cancer patients. (B) Correlation of EphA2 expression with the expression of common ferroptosis-related genes. *stands for significance levels, * for $p < 0.05$, ** $p < 0.01$, *** $p < 0.001$.

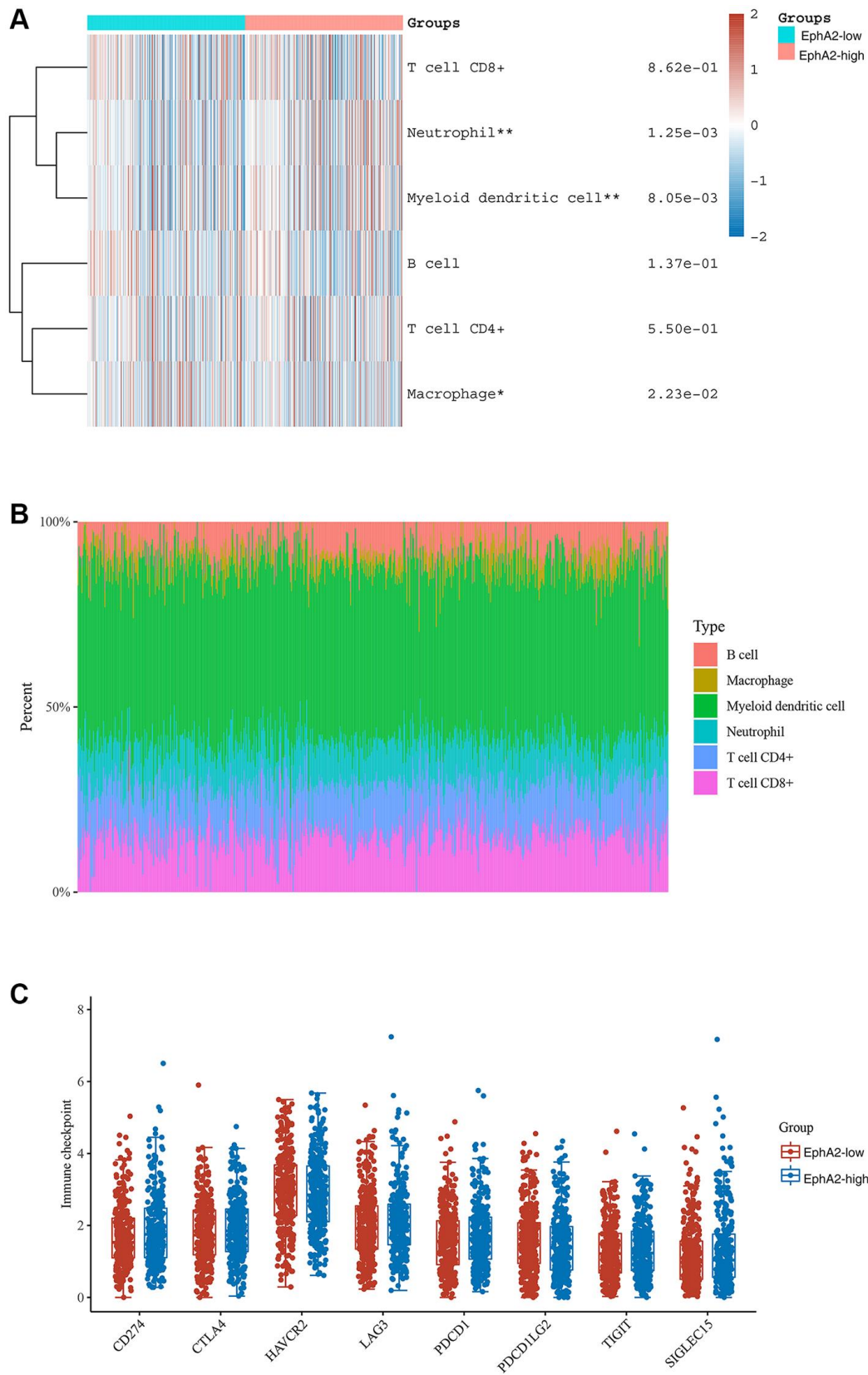


Figure 6. Correlation between Epha2 expression and various immune cells infiltration of colorectal cancer. (A) Heat map showing the level of immune cell infiltration in Epha2 differentially expressed colorectal cancer patients. **(B)** Percentage abundance of tumour-infiltrating immune cells per sample. **(C)** Expression distribution of immune checkpoint of colorectal cancer samples with differential Epha2 expression. *stands for significance levels, * for $p < 0.05$, ** $p < 0.01$.

The occurrence of ferroptosis is regulated by several genes, such as GPX4, CDKN1A, SLC1A5, and ACSL4, etc. In this study, we found that EphA2 expression showed significant correlation with several ferroptosis-related genes, including ALOX15, ATL1, CARS1, HSPA5, SLC7A11 and SLC1A5, etc., [42], suggesting that EphA2 may influence tumour progression by regulating iron death in colorectal cancer.

In recent years, the emergence of tumor immunotherapy has changed the traditional pattern of tumor treatment. It is one of the most promising research directions in the field of tumour therapy, and has been widely used as the fourth tumour treatment in clinical practice [60]. Tumour immunotherapy is mainly divided into immune checkpoint blockades (ICBs) and chimeric antigen receptor T cell immunotherapy. In this study, we found that EphA2 expression correlated with infiltration of a variety of immune cells, such as neutrophils, myeloid dendritic cells and macrophage cells, but EphA2 expression did not correlate significantly with common immune checkpoints such as PDCD1, CTLA4, and CD274, etc., These results suggest that EphA2 may regulate the development of colorectal cancer by influencing the infiltration of immune cells.

AUTHOR CONTRIBUTIONS

Qiu Peng and Lujuan Wang conceived and designed all experiments. Yanling Li and Qiu Peng performed experiments, collected and analyzed the data, and drafted the manuscript. Lujuan Wang revised and finalized the manuscript. All authors read and approved the final manuscript.

CONFLICTS OF INTEREST

The authors declare no conflicts of interest related to this study.

FUNDING

This work was supported in part by grants from the following sources: the National Natural Science Foundation of China (82203233), the Natural Science Foundation of Hunan Province (2023JJ40413, 2023JJ40853, 2023JJ60325), the Research Project of Health Commission of Hunan Province (202302067467), the Changsha Science and Technology Board (kq2208337).

REFERENCES

1. Pei L, Liu Y, Liu L, Gao S, Gao X, Feng Y, Sun Z, Zhang Y, Wang C. Roles of cancer-associated fibroblasts (CAFs) in anti- PD-1/PD-L1 immunotherapy for solid cancers. *Mol Cancer*. 2023; 22:29. <https://doi.org/10.1186/s12943-023-01731-z> PMID:[36759842](https://pubmed.ncbi.nlm.nih.gov/36759842/)
2. Wong CC, Yu J. Gut microbiota in colorectal cancer development and therapy. *Nat Rev Clin Oncol*. 2023; 20:429–52. <https://doi.org/10.1038/s41571-023-00766-x> PMID:[37169888](https://pubmed.ncbi.nlm.nih.gov/37169888/)
3. Zhang M, Hu S, Liu L, Dang P, Liu Y, Sun Z, Qiao B, Wang C. Engineered exosomes from different sources for cancer-targeted therapy. *Signal Transduct Target Ther*. 2023; 8:124. <https://doi.org/10.1038/s41392-023-01382-y> PMID:[36922504](https://pubmed.ncbi.nlm.nih.gov/36922504/)
4. Ciardiello F, Ciardiello D, Martini G, Napolitano S, Tabernero J, Cervantes A. Clinical management of metastatic colorectal cancer in the era of precision medicine. *CA Cancer J Clin*. 2022; 72:372–401. <https://doi.org/10.3322/caac.21728> PMID:[35472088](https://pubmed.ncbi.nlm.nih.gov/35472088/)
5. Bando H, Ohtsu A, Yoshino T. Therapeutic landscape and future direction of metastatic colorectal cancer. *Nat Rev Gastroenterol Hepatol*. 2023; 20:306–22. <https://doi.org/10.1038/s41575-022-00736-1> PMID:[36670267](https://pubmed.ncbi.nlm.nih.gov/36670267/)
6. Xiong Y, Li KX, Wei H, Jiao L, Yu SY, Zeng L. Eph/ephrin signalling serves a bidirectional role in lipopolysaccharide-induced intestinal injury. *Mol Med Rep*. 2018; 18:2171–81. <https://doi.org/10.3892/mmr.2018.9169> PMID:[29901151](https://pubmed.ncbi.nlm.nih.gov/29901151/)
7. Pasquale EB. Eph-ephrin bidirectional signaling in physiology and disease. *Cell*. 2008; 133:38–52. <https://doi.org/10.1016/j.cell.2008.03.011> PMID:[18394988](https://pubmed.ncbi.nlm.nih.gov/18394988/)
8. Pasquale EB. Eph receptor signalling casts a wide net on cell behaviour. *Nat Rev Mol Cell Biol*. 2005; 6:462–75. <https://doi.org/10.1038/nrm1662> PMID:[15928710](https://pubmed.ncbi.nlm.nih.gov/15928710/)
9. Peng Q, Chen L, Wu W, Wang J, Zheng X, Chen Z, Jiang Q, Han J, Wei L, Wang L, Huang J, Ma J. EPH receptor A2 governs a feedback loop that activates Wnt/ β -catenin signaling in gastric cancer. *Cell Death Dis*. 2018; 9:1146. <https://doi.org/10.1038/s41419-018-1164-y> PMID:[30451837](https://pubmed.ncbi.nlm.nih.gov/30451837/)
10. Pasquale EB. Eph receptors and ephrins in cancer: bidirectional signalling and beyond. *Nat Rev Cancer*. 2010; 10:165–80. <https://doi.org/10.1038/nrc2806> PMID:[20179713](https://pubmed.ncbi.nlm.nih.gov/20179713/)
11. Yan H, Wu W, Hu Y, Li J, Xu J, Chen X, Xu Z, Yang X,

- Yang B, He Q, Luo P. Regorafenib inhibits EphA2 phosphorylation and leads to liver damage via the ERK/MDM2/p53 axis. *Nat Commun.* 2023; 14:2756.
<https://doi.org/10.1038/s41467-023-38430-8>
PMID:37179400
12. Han B, Zhang H, Tian R, Liu H, Wang Z, Wang Z, Tian J, Cui Y, Ren S, Zuo X, Tian R, Niu R, Zhang F. Exosomal EPHA2 derived from highly metastatic breast cancer cells promotes angiogenesis by activating the AMPK signaling pathway through Ephrin A1-EPHA2 forward signaling. *Theranostics.* 2022; 12:4127–46.
<https://doi.org/10.7150/thno.72404>
PMID:35673569
 13. Gai QJ, Fu Z, He J, Mao M, Yao XX, Qin Y, Lan X, Zhang L, Miao JY, Wang YX, Zhu J, Yang FC, Lu HM, et al. EPHA2 mediates PDGFA activity and functions together with PDGFRA as prognostic marker and therapeutic target in glioblastoma. *Signal Transduct Target Ther.* 2022; 7:33.
<https://doi.org/10.1038/s41392-021-00855-2>
PMID:35105853
 14. Zhou Y, Sakurai H. Emerging and Diverse Functions of the EphA2 Noncanonical Pathway in Cancer Progression. *Biol Pharm Bull.* 2017; 40:1616–24.
<https://doi.org/10.1248/bpb.b17-00446>
PMID:28966234
 15. Miao H, Li DQ, Mukherjee A, Guo H, Petty A, Cutter J, Basilion JP, Sedor J, Wu J, Danielpour D, Sloan AE, Cohen ML, Wang B. EphA2 mediates ligand-dependent inhibition and ligand-independent promotion of cell migration and invasion via a reciprocal regulatory loop with Akt. *Cancer Cell.* 2009; 16:9–20.
<https://doi.org/10.1016/j.ccr.2009.04.009>
PMID:19573808
 16. Xiao Q, McAtee CK, Su X. Phase separation in immune signalling. *Nat Rev Immunol.* 2022; 22:188–99.
<https://doi.org/10.1038/s41577-021-00572-5>
PMID:34230650
 17. Peng Q, Wang L, Wang J, Liu C, Zheng X, Zhang X, Wei L, Li Z, Wu Y, Wen Y, Cao P, Liao Q, Yan Q, Ma J. Epstein-Barr virus EBNA2 phase separation regulates cancer-associated alternative RNA splicing patterns. *Clin Transl Med.* 2021; 11:e504.
<https://doi.org/10.1002/ctm2.504>
PMID:34459139
 18. Peng Q, Wang L, Qin Z, Wang J, Zheng X, Wei L, Zhang X, Zhang X, Liu C, Li Z, Wu Y, Li G, Yan Q, Ma J. Phase Separation of Epstein-Barr Virus EBNA2 and Its Coactivator EBNA1 Controls Gene Expression. *J Virol.* 2020; 94:e01771-19.
<https://doi.org/10.1128/JVI.01771-19>
PMID:31941785
 19. Levone BR, Lenzken SC, Antonaci M, Maiser A, Rapp A, Conte F, Reber S, Mechtersheimer J, Ronchi AE, Mühlemann O, Leonhardt H, Cardoso MC, Ruepp MD, Barabino SML. FUS-dependent liquid-liquid phase separation is important for DNA repair initiation. *J Cell Biol.* 2021; 220:e202008030.
<https://doi.org/10.1083/jcb.202008030>
PMID:33704371
 20. Hnisz D, Shrinivas K, Young RA, Chakraborty AK, Sharp PA. A Phase Separation Model for Transcriptional Control. *Cell.* 2017; 169:13–23.
<https://doi.org/10.1016/j.cell.2017.02.007>
PMID:28340338
 21. Trojanowski J, Frank L, Rademacher A, Mücke N, Grigaitis P, Rippe K. Transcription activation is enhanced by multivalent interactions independent of phase separation. *Mol Cell.* 2022; 82:1878–93.e10.
<https://doi.org/10.1016/j.molcel.2022.04.017>
PMID:35537448
 22. Dao TP, Kolaitis RM, Kim HJ, O'Donovan K, Martyniak B, Colicino E, Hehnlly H, Taylor JP, Castañeda CA. Ubiquitin Modulates Liquid-Liquid Phase Separation of UBQLN2 via Disruption of Multivalent Interactions. *Mol Cell.* 2018; 69:965–78.e6.
<https://doi.org/10.1016/j.molcel.2018.02.004>
PMID:29526694
 23. Peng Q, Tan S, Xia L, Wu N, Oyang L, Tang Y, Su M, Luo X, Wang Y, Sheng X, Zhou Y, Liao Q. Phase separation in Cancer: From the Impacts and Mechanisms to Treatment potentials. *Int J Biol Sci.* 2022; 18:5103–22.
<https://doi.org/10.7150/ijbs.75410>
PMID:35982902
 24. Boyko S, Surewicz WK. Tau liquid-liquid phase separation in neurodegenerative diseases. *Trends Cell Biol.* 2022; 32:611–23.
<https://doi.org/10.1016/j.tcb.2022.01.011>
PMID:35181198
 25. Xie J, He H, Kong W, Li Z, Gao Z, Xie D, Sun L, Fan X, Jiang X, Zheng Q, Li G, Zhu J, Zhu G. Targeting androgen receptor phase separation to overcome antiandrogen resistance. *Nat Chem Biol.* 2022; 18:1341–50.
<https://doi.org/10.1038/s41589-022-01151-y>
PMID:36229685
 26. Su X, Ditlev JA, Hui E, Xing W, Banjade S, Okrut J, King DS, Taunton J, Rosen MK, Vale RD. Phase separation of signaling molecules promotes T cell receptor signal transduction. *Science.* 2016; 352:595–9.
<https://doi.org/10.1126/science.aad9964>
PMID:27056844
 27. Lin CC, Suen KM, Jeffrey PA, Wieteska L, Lidster JA, Bao P, Curd AP, Stainthorp A, Seiler C, Koss H, Miska E,

- Ahmed Z, Evans SD, et al. Receptor tyrosine kinases regulate signal transduction through a liquid-liquid phase separated state. *Mol Cell*. 2022; 82:1089–106.e12.
<https://doi.org/10.1016/j.molcel.2022.02.005>
PMID:35231400
28. Ibrahim AY, Khaodeuanepheng NP, Amarasekara DL, Correia JJ, Lewis KA, Fitzkee NC, Hough LE, Whitten ST. Intrinsically disordered regions that drive phase separation form a robustly distinct protein class. *J Biol Chem*. 2023; 299:102801.
<https://doi.org/10.1016/j.jbc.2022.102801>
PMID:36528065
29. Borchers W, Bremer A, Borgia MB, Mittag T. How do intrinsically disordered protein regions encode a driving force for liquid-liquid phase separation? *Curr Opin Struct Biol*. 2021; 67:41–50.
<https://doi.org/10.1016/j.sbi.2020.09.004>
PMID:33069007
30. Wang J, Xiu J, Farrell A, Baca Y, Arai H, Battaglin F, Kawanishi N, Soni S, Zhang W, Millstein J, Shields AF, Grothey A, Weinberg BA, et al. Mutational analysis of microsatellite-stable gastrointestinal cancer with high tumour mutational burden: a retrospective cohort study. *Lancet Oncol*. 2023; 24:151–61.
[https://doi.org/10.1016/S1470-2045\(22\)00783-5](https://doi.org/10.1016/S1470-2045(22)00783-5)
PMID:36681091
31. Manca P, Corti F, Intini R, Mazzoli G, Miceli R, Germani MM, Bergamo F, Ambrosini M, Cristarella E, Cerantola R, Boccaccio C, Ricagno G, Ghelardi F, et al. Tumour mutational burden as a biomarker in patients with mismatch repair deficient/microsatellite instability-high metastatic colorectal cancer treated with immune checkpoint inhibitors. *Eur J Cancer*. 2023; 187:15–24.
<https://doi.org/10.1016/j.ejca.2023.03.029>
PMID:37099945
32. Karamitopoulou E, Andreou A, Wenning AS, Gloor B, Perren A. High tumor mutational burden (TMB) identifies a microsatellite stable pancreatic cancer subset with prolonged survival and strong anti-tumor immunity. *Eur J Cancer*. 2022; 169:64–73.
<https://doi.org/10.1016/j.ejca.2022.03.033>
PMID:35512587
33. Xu C, Kim A, Corbin JM, Wang GG. Onco-condensates: formation, multi-component organization, and biological functions. *Trends Cancer*. 2023; 9:738–51.
<https://doi.org/10.1016/j.trecan.2023.05.006>
PMID:37349246
34. Wei M, Huang X, Liao L, Tian Y, Zheng X. SENP1 Decreases RNF168 Phase Separation to Promote DNA Damage Repair and Drug Resistance in Colon Cancer. *Cancer Res*. 2023; 83:2908–23.
<https://doi.org/10.1158/0008-5472.CAN-22-4017>
PMID:37350666
35. Gao H, Wei H, Yang Y, Li H, Liang J, Ye J, Zhang F, Wang L, Shi H, Wang J, Han A. Phase separation of DDX21 promotes colorectal cancer metastasis via MCM5-dependent EMT pathway. *Oncogene*. 2023; 42:1704–15.
<https://doi.org/10.1038/s41388-023-02687-6>
PMID:37029300
36. Hirose T, Ninomiya K, Nakagawa S, Yamazaki T. A guide to membraneless organelles and their various roles in gene regulation. *Nat Rev Mol Cell Biol*. 2023; 24:288–304.
<https://doi.org/10.1038/s41580-022-00558-8>
PMID:36424481
37. Bremer A, Farag M, Borchers WM, Peran I, Martin EW, Pappu RV, Mittag T. Deciphering how naturally occurring sequence features impact the phase behaviours of disordered prion-like domains. *Nat Chem*. 2022; 14:196–207.
<https://doi.org/10.1038/s41557-021-00840-w>
PMID:34931046
38. Bianchi G, Longhi S, Grandori R, Brocca S. Relevance of Electrostatic Charges in Compactness, Aggregation, and Phase Separation of Intrinsically Disordered Proteins. *Int J Mol Sci*. 2020; 21:6208.
<https://doi.org/10.3390/ijms21176208>
PMID:32867340
39. Lu H, Yu D, Hansen AS, Ganguly S, Liu R, Heckert A, Darzacq X, Zhou Q. Phase-separation mechanism for C-terminal hyperphosphorylation of RNA polymerase II. *Nature*. 2018; 558:318–23.
<https://doi.org/10.1038/s41586-018-0174-3>
PMID:29849146
40. Boija A, Klein IA, Sabari BR, Dall'Agnese A, Coffey EL, Zamudio AV, Li CH, Shrinivas K, Manteiga JC, Hannett NM, Abraham BJ, Afeyan LK, Guo YE, et al. Transcription Factors Activate Genes through the Phase-Separation Capacity of Their Activation Domains. *Cell*. 2018; 175:1842–55.e16.
<https://doi.org/10.1016/j.cell.2018.10.042>
PMID:30449618
41. Amato KR, Wang S, Tan L, Hastings AK, Song W, Lovly CM, Meador CB, Ye F, Lu P, Balko JM, Colvin DC, Cates JM, Pao W, et al. EPHA2 Blockade Overcomes Acquired Resistance to EGFR Kinase Inhibitors in Lung Cancer. *Cancer Res*. 2016; 76:305–18.
<https://doi.org/10.1158/0008-5472.CAN-15-0717>
PMID:26744526
42. Zheng S, Guan XY. Ferroptosis: Promising approach for cancer and cancer immunotherapy. *Cancer Lett*. 2023; 561:216152.

- <https://doi.org/10.1016/j.canlet.2023.216152>
PMID:[37023938](https://pubmed.ncbi.nlm.nih.gov/37023938/)
43. Zhang R, Kang R, Tang D. Ferroptosis in gastrointestinal cancer: from mechanisms to implications. *Cancer Lett.* 2023; 561:216147.
<https://doi.org/10.1016/j.canlet.2023.216147>
PMID:[36965540](https://pubmed.ncbi.nlm.nih.gov/36965540/)
44. Dos Santos AF, Fazeli G, Xavier da Silva TN, Friedmann Angeli JP. Ferroptosis: mechanisms and implications for cancer development and therapy response. *Trends Cell Biol.* 2023. [Epub ahead of print].
<https://doi.org/10.1016/j.tcb.2023.04.005>
PMID:[37230924](https://pubmed.ncbi.nlm.nih.gov/37230924/)
45. Ye L, Zhang T, Kang Z, Guo G, Sun Y, Lin K, Huang Q, Shi X, Ni Z, Ding N, Zhao KN, Chang W, Wang J, et al. Tumor-Infiltrating Immune Cells Act as a Marker for Prognosis in Colorectal Cancer. *Front Immunol.* 2019; 10:2368.
<https://doi.org/10.3389/fimmu.2019.02368>
PMID:[31681276](https://pubmed.ncbi.nlm.nih.gov/31681276/)
46. Arora S, Scott AM, Janes PW. Eph Receptors in Cancer. *Biomedicines.* 2023; 11:315.
<https://doi.org/10.3390/biomedicines11020315>
PMID:[36830852](https://pubmed.ncbi.nlm.nih.gov/36830852/)
47. Liu Y, Zhang X, Qiu Y, Huang D, Zhang S, Xie L, Qi L, Yu C, Zhou X, Hu G, Tian Y. Clinical significance of EphA2 expression in squamous-cell carcinoma of the head and neck. *J Cancer Res Clin Oncol.* 2011; 137:761–9.
<https://doi.org/10.1007/s00432-010-0936-2>
PMID:[20614133](https://pubmed.ncbi.nlm.nih.gov/20614133/)
48. Song W, Kim LC, Han W, Hou Y, Edwards DN, Wang S, Blackwell TS, Cheng F, Brantley-Sieders DM, Chen J. Phosphorylation of PLC γ 1 by EphA2 Receptor Tyrosine Kinase Promotes Tumor Growth in Lung Cancer. *Mol Cancer Res.* 2020; 18:1735–43.
<https://doi.org/10.1158/1541-7786.MCR-20-0075>
PMID:[32753469](https://pubmed.ncbi.nlm.nih.gov/32753469/)
49. Zhang H, Ji X, Li P, Liu C, Lou J, Wang Z, Wen W, Xiao Y, Zhang M, Zhu X. Liquid-liquid phase separation in biology: mechanisms, physiological functions and human diseases. *Sci China Life Sci.* 2020; 63:953–85.
<https://doi.org/10.1007/s11427-020-1702-x>
PMID:[32548680](https://pubmed.ncbi.nlm.nih.gov/32548680/)
50. Xie Q, Cheng J, Mei W, Yang D, Zhang P, Zeng C. Phase separation in cancer at a glance. *J Transl Med.* 2023; 21:237.
<https://doi.org/10.1186/s12967-023-04082-x>
PMID:[37005672](https://pubmed.ncbi.nlm.nih.gov/37005672/)
51. Taniue K, Akimitsu N. Aberrant phase separation and cancer. *FEBS J.* 2022; 289:17–39.
<https://doi.org/10.1111/febs.15765>
PMID:[33583140](https://pubmed.ncbi.nlm.nih.gov/33583140/)
52. Chandra B, Michmerhuizen NL, Shirnekhi HK, Tripathi S, Pioso BJ, Baggett DW, Mitrea DM, Iacobucci I, White MR, Chen J, Park CG, Wu H, Pounds S, et al. Phase Separation Mediates NUP98 Fusion Oncoprotein Leukemic Transformation. *Cancer Discov.* 2022; 12:1152–69.
<https://doi.org/10.1158/2159-8290.CD-21-0674>
PMID:[34903620](https://pubmed.ncbi.nlm.nih.gov/34903620/)
53. Li RH, Tian T, Ge QW, He XY, Shi CY, Li JH, Zhang Z, Liu FZ, Sang LJ, Yang ZZ, Liu YZ, Xiong Y, Yan Q, et al. A phosphatidic acid-binding lncRNA SNHG9 facilitates LATS1 liquid-liquid phase separation to promote oncogenic YAP signaling. *Cell Res.* 2021; 31:1088–105.
<https://doi.org/10.1038/s41422-021-00530-9>
PMID:[34267352](https://pubmed.ncbi.nlm.nih.gov/34267352/)
54. Sabari BR, Dall'Agnese A, Boija A, Klein IA, Coffey EL, Shrinivas K, Abraham BJ, Hannett NM, Zamudio AV, Manteiga JC, Li CH, Guo YE, Day DS, et al. Coactivator condensation at super-enhancers links phase separation and gene control. *Science.* 2018; 361:eaar3958.
<https://doi.org/10.1126/science.aar3958>
PMID:[29930091](https://pubmed.ncbi.nlm.nih.gov/29930091/)
55. Zhang K, Huang M, Li A, Wen J, Yan L, Li Y, Guo L, Senthil KS, Zhou Y, Chen G, Liu Y, Zhang X, Yao X, et al. DIAPH3 condensates formed by liquid-liquid phase separation act as a regulatory hub for stress-induced actin cytoskeleton remodeling. *Cell Rep.* 2023; 42:111986.
<https://doi.org/10.1016/j.celrep.2022.111986>
PMID:[36640348](https://pubmed.ncbi.nlm.nih.gov/36640348/)
56. Chen H, Xu X, Hu W, Wu S, Xiao J, Wu P, Wang X, Han X, Zhang Y, Zhang Y, Jiang N, Liu W, Lou C, et al. Self-programmed dynamics of T cell receptor condensation. *Proc Natl Acad Sci U S A.* 2023; 120:e2217301120.
<https://doi.org/10.1073/pnas.2217301120>
PMID:[37399423](https://pubmed.ncbi.nlm.nih.gov/37399423/)
57. Zheng C, Zhang B, Li Y, Liu K, Wei W, Liang S, Guo H, Ma K, Liu Y, Wang J, Liu L. Donafenib and GSK-J4 Synergistically Induce Ferroptosis in Liver Cancer by Upregulating HMOX1 Expression. *Adv Sci (Weinh).* 2023; 10:e2206798.
<https://doi.org/10.1002/advs.202206798>
PMID:[37330650](https://pubmed.ncbi.nlm.nih.gov/37330650/)
58. Nie J, Zhang P, Liang C, Yu Y, Wang X. ASCL1-mediated ferroptosis resistance enhances the progress of castration-resistant prostate cancer to neurosecretory prostate cancer. *Free Radic Biol Med.* 2023; 205:318–31.
<https://doi.org/10.1016/j.freeradbiomed.2023.06.006>
PMID:[37355053](https://pubmed.ncbi.nlm.nih.gov/37355053/)

59. Zhou Q, Liu T, Qian W, Ji J, Cai Q, Jin Y, Jiang J, Zhang J. HNF4A-BAP31-VDAC1 axis synchronously regulates cell proliferation and ferroptosis in gastric cancer. *Cell Death Dis.* 2023; 14:356.
<https://doi.org/10.1038/s41419-023-05868-z>
PMID:[37296105](https://pubmed.ncbi.nlm.nih.gov/37296105/)

60. Li H, Ding JY, Zhang MJ, Yu HJ, Sun ZJ. Tertiary lymphoid structures and cytokines interconnections: The implication in cancer immunotherapy. *Cancer Lett.* 2023; 568:216293.
<https://doi.org/10.1016/j.canlet.2023.216293>
PMID:[37392991](https://pubmed.ncbi.nlm.nih.gov/37392991/)