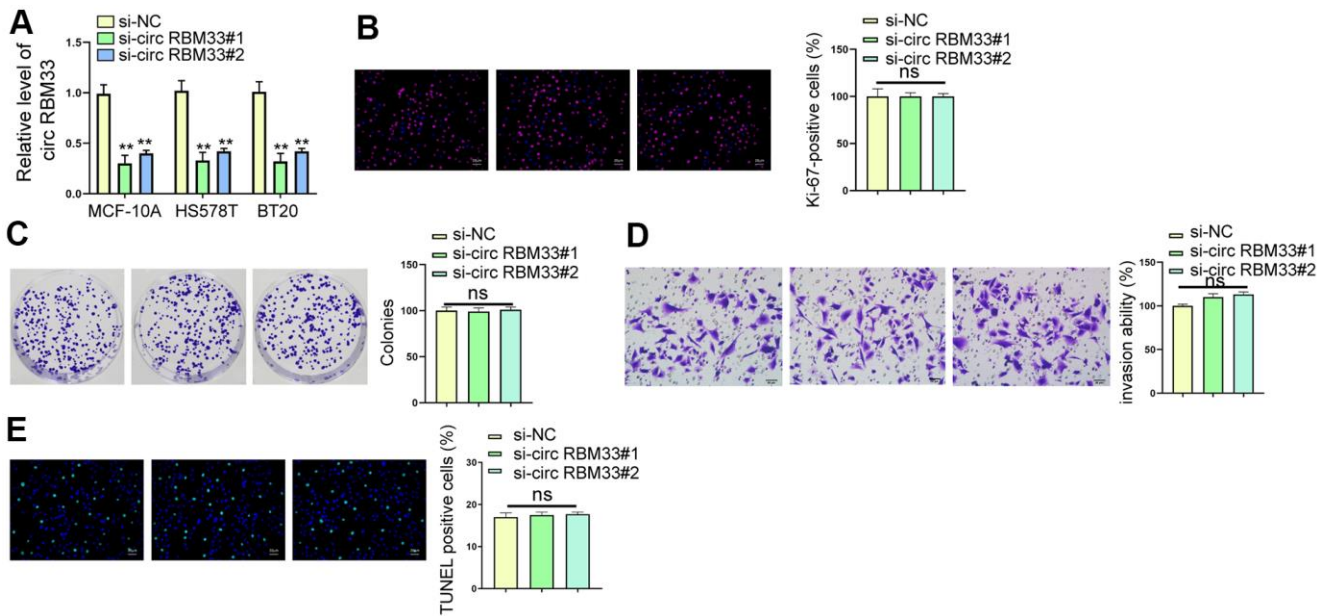
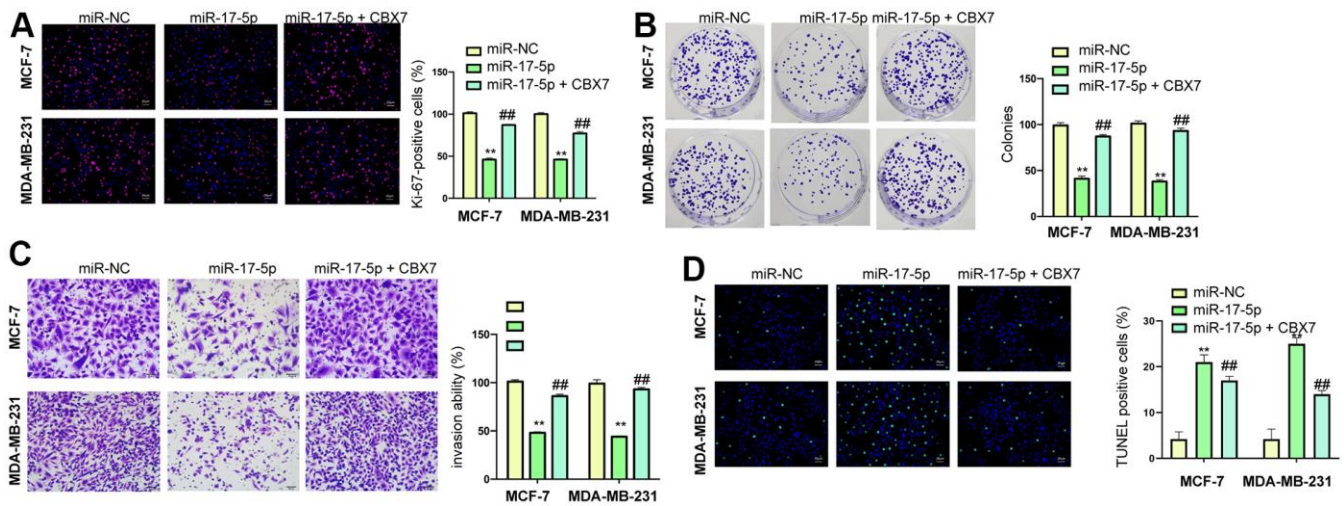


**SUPPLEMENTARY FIGURES**



**Supplementary Figure 1. The expression of circRBM33 is upregulated in breast cancer cells.** (A–E) The cells were treated with circRBM33 siRNAs. (A) The expression of circRBM33 was measured by qPCR in BT20 and HS578T breast cancer cell lines and immortalized breast epithelial MCF-10A cell line. (B) The cell proliferation was detected by Ki-67 staining. (C) The cell proliferation was analyzed by clone formation assay. (D) The invasion ability was assessed by Transwell assay. (E) The cell apoptosis was examined by TUNEL assay. Data are presented as mean ± SEM. Statistic significant differences were indicated: ns no significance, \*\*  $P < 0.01$ .



**Supplementary Figure 2. MiR-17a-5p represses breast cancer progression by targeting CBX7 expression *in vitro*.** (A–D) The cells were treated with miR-17a-5p mimic or co-treated with miR-17a-5p mimic and CBX7 overexpression plasmid. (A) The cell proliferation was detected by Ki-67 staining. (B) The cell proliferation was analyzed by clone formation assay. (C) The invasion ability was assessed by Transwell assay. (D) The cell apoptosis was examined by TUNEL assay. Data are presented as mean ± SEM. Statistic significant differences were indicated: ns no significance, \*\*  $P < 0.01$ , ##  $P < 0.01$ .