

Involvement of cerebrovascular abnormalities in the pathogenesis and progression of Alzheimer's disease: an adrenergic approach

Song Li^{1,2,*}, Che Wang^{3,*}, Zhen Wang⁴, Jun Tan⁵

¹Liaoning Provincial Center for Clinical Research on Neurological Diseases, The First Affiliated Hospital, Dalian Medical University, Dalian 116021, China

²Liaoning Provincial Key Laboratory for Research on the Pathogenic Mechanisms of Neurological Diseases, The First Affiliated Hospital, Dalian Medical University, Dalian 116021, China

³Department of Pharmaceutical Chemistry, School of Chemistry and Chemical Engineering, Liaoning Normal University, Dalian 116029, China

⁴Department of Neurology, The First Affiliated Hospital of Wenzhou Medical University, Wenzhou 325000, China

⁵Key Laboratory of Endemic and Ethnic Diseases, Guizhou Medical University, Guiyang 550004, China

*Equal contribution

Correspondence to: Song Li, Jun Tan; email: lisong@dmu.edu.cn, itan@gmc.edu.cn

Keywords: Alzheimer's disease, adrenergic receptors, β -amyloid, cerebrovascular, tau

Received: May 24, 2021

Accepted: August 17, 2021

Published: September 3, 2021

Copyright: © 2021 Li et al. This is an open access article distributed under the terms of the [Creative Commons Attribution License](https://creativecommons.org/licenses/by/3.0/) (CC BY 3.0), which permits unrestricted use, distribution, and reproduction in any medium, provided the original author and source are credited.

ABSTRACT

Alzheimer's disease (AD), as the most common neurodegenerative disease in elder population, is pathologically characterized by β -amyloid (A β) plaques, neurofibrillary tangles composed of highly-phosphorylated tau protein and consequently progressive neurodegeneration. However, both A β and tau fails to cover the whole pathological process of AD, and most of the A β - or tau-based therapeutic strategies are all failed. Increasing lines of evidence from both clinical and preclinical studies have indicated that age-related cerebrovascular dysfunctions, including the changes in cerebrovascular microstructure, blood-brain barrier integrity, cerebrovascular reactivity and cerebral blood flow, accompany or even precede the development of AD-like pathologies. These findings may raise the possibility that cerebrovascular changes are likely pathogenic contributors to the onset and progression of AD. In this review, we provide an appraisal of the cerebrovascular alterations in AD and the relationship to cognitive impairment and AD pathologies. Moreover, the adrenergic mechanisms leading to cerebrovascular and AD pathologies were further discussed. The contributions of early cerebrovascular factors, especially through adrenergic mechanisms, should be considered and treasured in the diagnostic, preventative, and therapeutic approaches to address AD.

INTRODUCTION

Alzheimer's disease (AD) is the most common form of neurodegenerative disease in elder population worldwide. It is estimated that, by 2060, the number of AD patients in Americans age 65 and older may increase to 13.8 million from 6.2 million today [1]. AD is clinically characterized as cognitive decline and psychiatric manifestations. The pathological hallmarks of AD brain

are the accumulation of extracellular β -amyloid (A β) (senile plaques) and the intracellular twisted strands of the hyper-phosphorylated tau protein (neurofibrillary tangles). These changes in the brain are accompanied by the neuronal damage. AD is a progressive neurodegenerative disorder that can start decades before the appearance of clinical symptoms. Although several pathological mechanisms of AD have been identified, no satisfactorily effective therapeutics has been developed.

Recently, cerebrovascular dysfunctions, as a possible cause in the development and progression of sporadic AD, have gained increasing attention [2–4]. Increasing evidence has indicated the involvement of various alterations in cerebrovascular structure or functions, such as the cerebrovascular microstructure, blood-brain barrier (BBB) integrity, composition of neurovascular unit, cerebrovascular reactivity and cerebral blood flow (CBF), in AD pathophysiology and cognitive defects [5, 6]. Recent findings further highlighted the prevalence of cerebrovascular disorders in Down syndrome patients and added to a growing body of evidence implicating cerebrovascular abnormalities as a core feature of AD rather than a simple comorbidity [7]. Moreover, adrenergic system, including α/β adrenergic receptors and their downstream molecular signaling process, might serve as the key approach to modulate these cerebrovascular abnormalities and progressive neurodegeneration [8]. In this review, we summarized the interplay between cerebrovascular function and AD pathologies in both AD animal models and AD patients. Moreover, the underlying adrenergic mechanisms were further discussed to explore potential targets for future AD diagnosis and therapy.

Cerebrovascular dysfunctions in AD

Abnormal cerebrovascular microstructure in AD

While a so-called ATN classification system of AD composed of $A\beta$ [A] and tau [T] pathologies as well as neurodegeneration [N] have been established [9, 10], this

system fails to present a clear causality and acknowledges an uncertain relationship between AD pathologies and AD symptoms. Considering the multifactorial feature of AD with complicate pathologies and manifestations, other factors, such as chronic and early cerebrovascular alterations, may contribute to the disease development and progression (Figure 1).

In 1991, microvessels in the brains of patients with AD were firstly observed by the scanning electron microscopy. Compared with control brain, obvious changes were observed in AD brains, including the focal constriction in terminal arterioles, irregular shape of smooth muscle cells, and the irregular abluminal surface and irregular constriction and dilatation of capillaries [11]. Microvascular ultrastructural changes in brain have also been reported to be prior to the onset of cognitive impairment in APP/PS1 AD model mice at 4 to 5 months of age [12]. Interestingly, despite the alterations of vasculature in brain, microvascular pathologies were also found in peripheral in AD [13]. At day 70 following femoral ligation, APP/PS1 mice showed significant decreases in cutaneous blood flow, collateral recruitment, capillary density and arteriole density in hind limbs compared to control wild-type littermates.

Abnormal cerebral blood flow in AD

In the gray matter of AD brain, CBF can be reduced by more than 40%, with the largest decrease in the right supramarginal gyrus and the smallest in the right

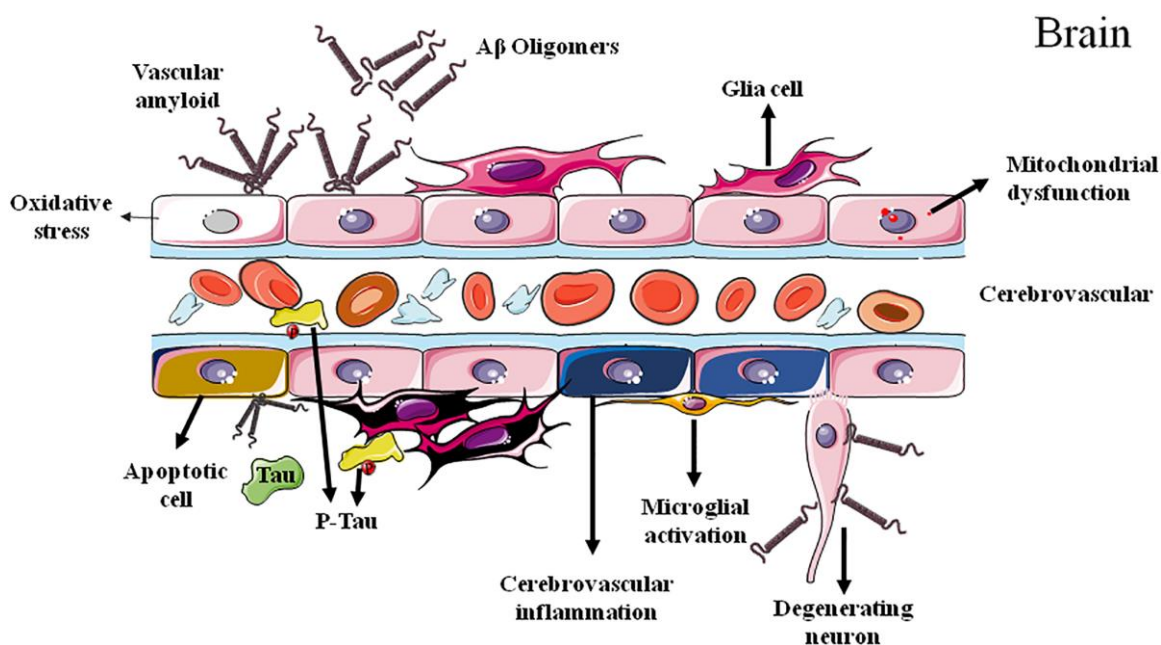


Figure 1. Cerebrovascular dysfunctions in Alzheimer's disease.

parahippocampal gyrus [14]. Moreover, in APP/PS1 and 5xFAD mouse models of AD, decreased CBF in cortical capillaries and impaired learning/memory ability was observed, which can be immediately ameliorated by the administration of antibodies against the neutrophil marker Ly6G [15]. The association between CBF alterations and AD pathologies can be observed in older adults without dementia. Non-demented individuals bearing high A β deposition in the brain showed declined CBF in right anterior to middle cingulate, right supramarginal gyrus, left thalamus, and midbrain bilaterally, as well as increase CBF in left medial and inferior frontal gyri, right precuneus, left inferior parietal lobule, and left postcentral gyrus, in the years preceding the neuroimaging acquisition [16]. Patients with amnesic MCI also showed a decreased cerebral perfusion [17] and this declined CBF in specific brain regions can be used as marker for identifying those MCI patients with high risk of rapidly progressing to AD in up to 3 years [17–21].

Abnormal blood-brain barrier integrity in AD

Clinical and experimental studies have revealed disruptions of BBB integrity in AD [22, 23]. Much more interestingly, brain capillary damage and BBB breakdown in the hippocampus of individuals with early cognitive dysfunction were irrespective of the alterations of A β and/or tau pathologies, suggesting the promising potential as early biomarker for AD [24]. Additionally, pericytes maintain BBB integrity and clear A β from the brain, and their degeneration leads to BBB breakdown and accelerates the onset and progression of A β and tau pathology in mouse models of AD [25, 26]. Moreover, tissue from AD brains exhibited BBB leakiness and altered blood vessels morphologies, accompanied with amplified microglia reactivity and inflammation [27].

Abnormal cerebrovascular reactivity in AD

Recent evidence suggests a close relationship between cerebrovascular function and AD. Cerebral hemodynamic alterations and decreased vascular density were found in the brain of APP/PS1 transgenic AD model mice [28]. Consistently, Hong et al. also found that, compare to wild-type control mice, APP/PS1 transgenic AD mice showed an increased cerebrovascular reactivity to ATP, which can be ameliorated by exercise training through P2Y₂ receptor-mediated eNOS signaling and reducing ER stress [29]. Interestingly, the reactivity of large arteries was not affected in AD mice. Moreover, circulating A β might be responsible for the impaired peripheral vasculature repair mechanisms. These results were consistent with the Kelle et al. study, in which APP/PS1 transgenic mice

showed a significant reduction of hepatic vessel number [12]. All these findings may suggest that vascular dysfunction in AD is a systemic alteration, both central and peripheral. Assessment of peripheral vasculature or vascular function may therefore provide additional tools for early diagnosis and management of AD.

Cerebrovascular abnormalities as early sign of AD

Microvascular ultrastructural changes in brain of APP/PS1 AD model mice have been reported to precede cognitive impairment [12]. Despite those preclinical experimental findings in AD animal models, clinical studies of patients with AD also revealed early cerebrovascular dysfunctions prior to significant AD symptoms [30–33]. Moreover, brain capillary damage and BBB breakdown in the hippocampus of individuals with early cognitive dysfunction were irrespective of the alterations of A β and/or tau pathologies [24]. One recent cross-sectional study also provided Class II evidence that cerebrovascular reactivity in patients with cognitive impairment can predict cognitive performance independently of AD pathologic biomarkers [6], suggesting cerebrovascular abnormalities could be an early sign for AD.

Furthermore, during the very early stage of AD, PS1 mutation has been found to induce a decrease in cerebral perfusion in the hippocampal-amygdaloid complex and in the anterior and posterior cingulate cortex [34]. Similarly, individuals carrying high AD-risky apolipoprotein E ϵ 4 (ApoE- ϵ 4) allele showed a BBB breakdown and decreased CBF over time in the frontal, parietal and temporal cortices, preceding the occurrence of cognitive decline [35, 36]. These alterations were also independent of A β or tau pathology [36]. Therefore, CBF reductions in specific brain regions may be proposed as the early biomarker of the development and progression of AD [32, 33]. Much more interestingly, the higher basal level of soluble platelet-derived growth factor receptor β (PDGFR β), one reliable BBB pericyte injury biomarker in the cerebrospinal fluid (CSF), may predict future cognitive impairment in APOE4 carriers but not in those non-carriers. These findings suggested that the abnormal structure or function of BBB contributes to APOE4-associated cognitive decline independent of AD pathology and might be a therapeutic target in AD patients carrying APOE4 [36].

Interplays between AD pathologies and cerebrovascular alterations

As mentioned above, cerebrovascular abnormalities accompany and even precede the classical A β and tau hallmarks of AD, suggesting potential pathological interactions between cerebrovascular alterations and AD

pathologies. In fact, polygenic risk scores for AD have been reported to be associated with various vascular events, including lobar cerebral microbleeds, white matter lesion load, and coronary artery calcification, suggesting vascular pathologies as an important target for future AD mechanistic research [37].

A β -mediated vascular endothelial damage, blood-flow decline and vasoactivity

The A β precursor protein (APP) expression can be detected in vascular endothelium of both central and peripheral blood vessels. Expression and activity of the key enzymes responsible for both non-amyloidogenic and amyloidogenic processing of APP have also been detected in endothelial cells [38]. Intriguingly, expression of APP751 and APP770 isoforms is higher in endothelial cells of cerebral blood vessels than in those of peripheral arteries [39], predicting a more serious pathophysiological reactivity of cerebrovascular to A β .

CBF reduction has been recognized as an early sign of AD onset. Nortley et al. found that A β induced brain capillaries constriction at pericyte locations in biopsied human tissue of demented patients, via overproduction of reactive oxygen species (ROS) and subsequently the release of endothelin-1. Consistently, similar capillary constriction has also been observed in App^{NL-G-F} knock-in mouse model of AD [40]. Therefore, the A β -induced cerebral capillaries constriction may contribute to the energy lack and neurodegeneration in AD, and the inhibition of the capillary constriction caused by A β could potentially reduce pathological consequences of A β [40]. Further experimental evidence has specifically supported the deleterious impacts of A β on cerebrovascular function [41–43] (Table 1). For example, short-term incubation of arteries with A β increases the vasoconstrictions to phenylephrine, serotonin, and endothelin-1 [44–47]. A β accumulation, due to either elevated production or declined clearance, can induce arterial vasoconstriction, reduce CBF and lead to impairment of functional hyperemia [48–51]. It is worth noting that neurotoxic A β ₄₂ oligomer can also dose-dependently induced vessel disruption and reduced angiogenesis, which can be prevented by epidermal growth factor, suggesting angiogenic pathway as potential target for AD therapy [52].

Several possible molecular mechanisms have been identified to be responsible for A β -induced CBF reduction and cerebrovascular constriction, including the increased production of prostaglandins and ROS. Furthermore, incubation of cerebral arteries with A β impairs endothelium-dependent relaxations which can be reversed by free radical scavenger superoxide dismutase, supporting the involvement of increased

ROS production and decreased eNOS activity in endothelial dysfunction [42, 44, 50, 53]. This vasoconstriction activity of A β might be also mediated by the altered function of the neurovascular unit (NVU) [54, 55] or α 1 adrenergic receptor [47].

Despite the vascular tone, platelet aggregation also impacts the blood perfusion in brain. Platelets can attach to vascular amyloid depositions and thereafter initiate platelet activation, which induces hemostatic plug and vascular occlusion in the brain and leads to insufficient CBF. On the other hand, A β can bind to the integrin α IIb β 3 on platelets and stimulate the secretion of clusterin, which in turn promoted A β aggregation [56].

Tau induces blood vessel abnormalities and cerebral blood flow changes

Despite A β , the pathological alterations of tau have also been reported to contribute to the cerebrovascular abnormalities in AD. Bennett et al. reported abnormal vascular morphologies, decreased vessel diameters and increased vessel densities in cortex in Tg4510 mice overexpressing P301L tau [57], which were concurrently accompanied by cortical atrophy and increased angiogenesis-related genes expression. Interestingly, all these cortical atrophy or blood vessel changes were not observed in Tg21221 mice overexpressing wild-type tau. Worth noting, A β accumulation in aged APP/PS1 mouse model of AD failed to induce plasminogen activation inhibitor 1 expression or similar blood vessel changes [58].

In addition, PS19 mice expressing mutant P301S tau and Tg4510 mice expressing P301L tau exhibit reduced vasodilatation of intracerebral arterioles and a suppressed CBF induction by neural activity, which precedes tau pathology and cognitive decline and can be reversed by reducing tau production [58]. All these vascular dysfunctions might be due to a tau-induced dissociation of neuronal nitric oxide synthase (nNOS) and reduction of nitric oxide (NO) during glutamatergic synaptic activity, indicating the glutamatergic signaling dysfunction and NO deficiency as early signs of tau pathology and providing a possible mechanism for the neurovascular alterations in the prodromal phase of AD [58].

Cerebrovascular alterations induce and promote amyloidopathy in AD

The potential impacts of cerebrovascular abnormalities on amyloidopathy have been extensively investigated by detecting the susceptibility of developing AD pathologies under the reduced cerebral perfusion conditions in various animal models [59, 60]. Cerebral

Table 1. Effects of A β on isolated cerebral blood vessels [52].

Vessel types	A β types	Concentration range	Cellular and/or molecular mechanisms of A β	References
Rat cerebral artery	A β 1–40	0.0001–1 μ M	Impaired endothelium-dependent relaxation to ACh	[56]
	A β 25–35	0.0001–1 μ M		
Mouse cerebral artery	A β 1–40	0.01–10 μ M	Decreased cerebral blood flow to ACh	[58, 68]
	A β 1–42	0.01–10 μ M	No change observed	
Rat penetrating cerebral arterioles	A β 1–40 A β 1–42	0.001–1 μ M	Reduction of tone diameter by increased contraction; decreased endothelium-dependent relaxation to ATP	[65]
Human middle cerebral artery	A β 1–40	1 μ M	Increased contractions to endothelin-1 via COX-2 and p38 mitogen-activated protein kinase activation	[61]
Human middle cerebral artery	A β 1–40	2 μ M	Increased production of PGF2 α and PGE2	[61]
Bovine middle cerebral artery	A β 1–40	1 μ M	Impaired endothelium-dependent relaxation to bradykinin	[57]

circulatory disturbance via the alterations of cerebrovascular structure or function may induce or exacerbate progressive neuronal loss in AD brain. Indeed, while intensive studies have focused on A β - and tau-related neuronal damages, increasing lines of evidence suggests the pivotal roles of vascular alterations in the pathogenesis and progression of AD [61]. According to the “Two-hit vascular hypothesis of AD”, the cerebrovascular damage preceding A β pathology is the initial insult of AD process. Reduced blood flow, BBB breakdown and altered vascular reactivity are self-sufficient to initiate neuronal injury and cognitive impairment (hit 1), and also subsequently alter A β production [60, 62, 63] and A β clearance [64] (hit 2). Faulty A β clearance itself may be the pathological consequence of arterial stiffness, which reduces the exchange of A β between interstitial fluid and CSF and leads to abnormal A β accumulation in brain [65]. ADAMTS13 deficiency led to an early and progressive damage of BBB together with reduced vessel density and decreased CBF in APP/PS1 model mice of AD. These cerebrovascular abnormalities induced by deficiency of ADAMTS13 also impeded A β clearance and consequently increased A β levels to exacerbate brain plaque load and cerebral amyloid angiopathy (CAA), resulting in worse cognitive decline in APP/PS1 mice. Interestingly, restoration of ADAMTS13 expression can attenuate BBB disruption, increase capillary perfusion, and ameliorate the CBF reduction in APP/PS1 mice. All these results confirmed the contribution of cerebrovascular alterations to A β pathology and further suggested ADAMTS13 as a novel target for AD therapy [66].

Cerebrovascular alterations induce and promote tauopathy in AD

Despite A β pathology, the associations between vascular and tau and their effects on cognition have also been confirmed by voxelwise comparisons between CBF and tau PET images in independent discovery and

replication cohorts. In participants with higher amyloid burden in brain and lower scores of Montreal cognitive assessment, strong correlation between soluble platelet-derived growth factor β and tau and correlation between CBF and tau were observed [67]. Laing et al. found that in AD patients, the volume of white matter of hyperintensity was positively correlated with plasma tau. Brain amyloid burden and the interaction between plasma tau and white matter of hyperintensity could distinguish AD and MCI patients from controls, with accuracies as 77.6% and 63.3%, respectively. Moreover, increased tau levels in plasma and CSF and hyperphosphorylated tau level in the ipsilateral hippocampus and cerebral hemisphere were observed in aged mice subjected to transient focal cerebral ischemia [68]. All these findings suggested cerebrovascular dysfunctions could induce and promote tau pathology in AD. Combination treatments targeting cerebrovascular, A β , and tau may be more effective to prevent or delay the pathogenesis or progression of AD than single-target therapies.

The chronic reduction of blood flow and thereafter impaired cerebral metabolism may deteriorate A β and tau pathologies through various molecular mechanisms. The A β /tau-neurovascular interactions are likely to fuel one another in deleterious vicious circles. Recently, Zhang et al. found that A β oligomers could be associated with α 2A adrenergic receptor to induce glycogen synthase kinase 3 β (GSK3 β) activation and thereafter tau hyperphosphorylation [69], suggesting the possible involvement of adrenergic mechanism in cerebrovascular dysfunction and AD pathology.

Adrenergic mechanisms underlying A β /tau-cerebrovascular interactions

The adrenergic signaling, as one of the major modulators of cerebrovascular reactivity and CBF, mediates its effects in blood vessels through various adrenergic receptors (also called adrenoceptors, ARs).

ARs are a part of membrane-bound G-protein-coupled receptors (GPCRs) that mediate the peripheral and central actions of norepinephrine and epinephrine. Due to their distributions, either presynaptically or postsynaptically on neurons or effector organs such as the heart, vasculature, and adipose tissue, ARs mediate a broad range of important physiological homeostatic responses. ARs are classified into two main categories, α and β . The α type is further divided into $\alpha 1$ and $\alpha 2$ which are subdivided into $\alpha 1A$, $\alpha 1B$, $\alpha 1D$ and $\alpha 2A$, $\alpha 2B$ and $\alpha 2C$, respectively. β -ARs are classified into $\beta 1$, $\beta 2$ and $\beta 3$ subgroups. Increasing evidence may predict the important roles of ARs and related signaling in the pathogenesis and progression of AD.

$\alpha 1$ -adrenoceptor

The $\alpha 1$ -AR is one of the ARs that play important roles in the regulation of vessel musculature. As a GPCR, the activated $\alpha 1$ -AR couples with the Gq protein to activate phospholipase C, which cleaves phosphatidylinositol-4,5-bisphosphate into diacylglycerol and inositol trisphosphate, two second messenger molecules influencing cellular calcium homeostasis and activating PKC/ERK pathway to induce vasoconstriction and cell proliferation (as summarized in Figure 2).

Increasing lines of evidence have been provided to support the deleterious roles of A β on cerebrovascular function [44]. Much more specifically, Haase et al. further found that A β _{25–35}, the toxic fragment of A β ,

induced vasoconstriction of mouse aortic rings and coronary arteries in Langendoff-perfused rat hearts, which could be reversed by $\alpha 1$ -AR blockage [47]. Consistently, agonistic autoantibodies (agAAB) for $\alpha 1$ -AR have been found to exert similar impacts as A β did. $\alpha 1$ -AR-agAABs were detected in about 50% of AD patients. These agAABs showed similar bioactivity as natural agonists do, such as A β , and bind to $\alpha 1$ -AR to induce significant elevation of intracellular calcium. Moreover, these agAABs could cause vascular impairment in the brain of animal model, as shown by the significant CBF reductions and vessels damage. Interestingly, a subsequent 12-18 months follow-up observations found a stabilized cognitive performance while agAABs were removed by immunoabsorption in AD patients [70, 71]. All these data may predict the important roles of $\alpha 1$ -AR-related vascular-pathologies in AD pathogenesis and progression.

$\alpha 2$ -adrenoceptor

Adrenaline or noradrenaline induce vasoconstriction through both $\alpha 1$ - and $\alpha 2$ -AR [72]. The $\alpha 2$ -AR expresses in both endothelial cells and smooth muscle cells of vascular [73]. Interestingly, while the endothelial $\alpha 2$ -AR induces vasorelaxation, the activation of $\alpha 2$ -AR in vascular smooth muscle cells leads to vasoconstriction [74]. Although the signal transduction pathways behind $\alpha 1$ -AR-mediated vasoconstriction have been well established, the exact mechanisms underlying $\alpha 2$ -AR-mediated vasoconstriction are still largely unknown.

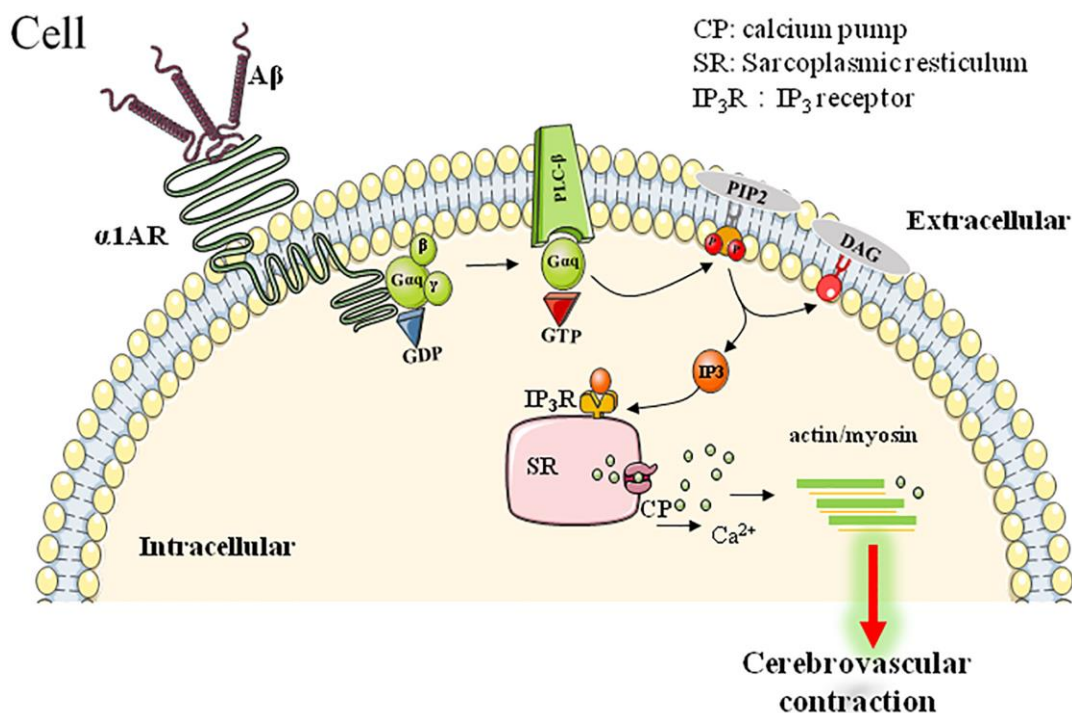


Figure 2. $\alpha 1$ AR-mediated downstream signaling pathway involved in A β -induced cerebrovascular abnormalities.

α 2-AR is coupled to Gi-protein and activation of α 2-AR leads to a decreased intracellular cAMP level, which in turn results in constriction of vascular smooth muscle and an increased blood vessel tone. Moreover, cAMP/AC independent mechanisms have also been found to be involved in the α 2-AR-mediated vasoconstriction. For example, α 2-AR can induce the vasoconstriction in the porcine palmar lateral vein via the activation of ERK-dependent signaling pathway and Src tyrosine kinases [75]. Interestingly, compared to nondemented, low pathology control subjects, AD patients showed a significant increase of α 2A-AR activity. Moreover, administration of α 2A-AR activator clonidine resulted in worsened cognitive function in demented patients but not in non-demented normal subjects [69]. Although up to date no experimental evidence have revealed the direct binding of A β with vascular α 2A-AR to modulate vascular function, A β oligomers but not monomer has been reported to interact with α 2A-AR in α 2A-AR overexpressed HEK293 cells. Moreover, A β oligomers can bind to allosteric site on α 2A-AR to redirect norepinephrine-elicited signaling to GSK3 β activation and so as to induce tau hyperphosphorylation [69]. Moreover, dexmedetomidine, an α 2-AR selective agonist, induced a persistent hyperphosphorylation of tau in mouse hippocampus, which can be blocked by α 2-AR specific antagonist atipamezole [76].

β 2-adrenoceptor

Despite α -AR, β -AR, especially β 2-AR, is also an important target for modulating vascular tone. In general, acute β -AR activation induces vasodilation. However, chronic stimulation of β -AR led to an altered vascular responsibility to contractive insults. Chronic exposure of isoproterenol, a synthetic β adrenergic agonist, induced endothelial dysfunction and consequently an increased vasoconstrictive responsibility to phenylephrine [77]. The enhanced vasoconstrictor response and oxidative stress level induced by isoproterenol treatment might be due to the endothelial nitric oxide synthase (eNOS) uncoupling, through the downstream signaling pathway of β 2-AR [78]. Previous studies have indicated that the stress-induced overproduction of catecholamines produce coronary spasms or arrhythmias via abnormal calcium signaling and impaired mitochondrial function. Notably, increased β 2-AR expression level has been found in the brains of AD patients and β -blockers decrease the incidence of AD. In fact, several lines of evidence have supported the binding of A β with β -AR. Wang et al. revealed that A β has a binding capacity to β 2-AR and induces PKA-dependent hyperactivity in AMPA receptors [79]. A β has been reported to induce tau phosphorylation at Ser-214, Ser-262 and Thr-181 through activating β 2-AR-PKA-JNK signaling pathway in primary PFC neurons. Moreover, A β can also activate

arrestin-ERK1/2 pathway in a β 2-AR-dependent manner. In contrast, the A β -induced tau phosphorylation at Thr-181 can be partially reversed by inhibition of MEK, an upstream molecule of ERK1/2 [80]. All these findings indicated that A β could induce cerebral vascular dysfunction at least partially through β 2-AR and its downstream signaling pathways. Much more importantly, activation of β 2-AR could stimulate γ -secretase to promote the formation of amyloid plaque, which may predict a feed-back loop and vicious cycle to promote the progression of AD.

As for the correlation between β 2-AR and tau pathology of AD, deletion of the β 2-AR showed a reduced mortality and significantly improved motor deficits in tau transgenic mice. The improved lifespan and motor function was associated with a reduction in brain tau immunoreactivity and phosphorylation. The β 2-AR-mediated changes in tau might be due to the reduced activity of GSK3 β and cyclin-dependent kinase 5, two kinases responsible for tau phosphorylation [81].

β 1- and β 3-adrenoceptors

Based on early pharmacological studies, the β 2-AR was thought to be the major vascular responsive β -AR subtype, whereas β 1 and β 3 are primarily distributed in cardiomyocytes and adipocytes, respectively. However, experimental findings also reported that β 1 and β 3 ARs also play potential roles in the cerebrovasculature [82]. Previous studies found that chronic administration of CL316243, a specific β 3 AR agonist, reversed the cognitive impairment and the elevated insoluble A β 42/A β 40 ratio in 16-month-old 3xTg-AD mice [83]. of CL316243 administration also specifically stimulated astrocytic but not neuronal glucose uptake and rescue the impaired cognitive function induced by A β [84]. As for β 1-AR, chronic treatment with xamoterol, a selective, functionally biased, partial agonist of β 1-AR, was effective to ameliorate cognitive deficits and reduce neuroinflammation and A β /tau pathologies in transgenic mouse models of AD [85, 86]. Furthermore, consistent with these findings, in APP transgenic mouse model of AD, chronic β -blockers administration potentiated CNS inflammation, whereas the β -blocker, metoprolol, induced phagocytosis and impaired cognitive behavior in both wild-type and APP transgenic mouse [87]. However, to date no direct evidence has implicated the involvement of β 1- or β 3-AR in the interactions of abnormal cerebrovasculature and A β /tau pathologies of AD.

Clinical implications of cerebrovascular abnormality on AD early diagnosis and therapy

To-date, no clinically relevant therapies have been achieved addressing abnormal neurovascular functions

of AD, aside from the reduced risk associated with diabetes and atherosclerosis. However, several clinical trials evaluated the therapeutic potential of adrenergic-agents against AD, including α_2 C AR antagonist ORM-12741 (<https://clinicaltrials.gov/ct2/show/NCT01324518>) and β_2 AR agonist formoterol (<https://clinicaltrials.gov/ct2/show/NCT02500784>).

Several clinical trials have confirmed the benefits of α_1 -antagonist prazosin on AD. Several clinical trials have assessed the effectiveness of prazosin, one α_1 AR antagonist, in AD. For examples, one randomized, placebo-controlled study in 24 patients suggested that prazosin significantly psychiatric symptoms of AD including agitation and aggression in AD patients, compared with the placebo-treated group. Another clinical trial found an improved behavior of AD patients after a 12-week period prazosin treatment compared with placebo control subjects. Moreover, another one synthetic α -AR blocker nicergoline also showed therapeutic potential against AD. Nicergoline has been found to enhance the cholinergic and catecholaminergic neurotransmission, improve the age-related cognitive deficits, and modulate protein kinase C (PKC)-mediated α -secretase processing of APP. Nicergoline has also been found to be neuroprotective and involved in the endogenous nerve growth factor-mediated processes. Nicergoline has been clinically used as therapeutics of cerebral metabolic-vascular disorders, vascular migraines, and dementia. In a European multicenter double-blind and placebo-controlled trial, nicergoline exerted a positive effect on the cognitive symptoms of mild-to-moderate AD [88].

Retinal vascular changes as biomarker of AD

AD is pathologically characterized by progressive accumulation of A β , tau hyperphosphorylation, and progressive neurodegeneration. Pathological senile plaques and neurofibrillary tangles in brain have been accepted as hallmarks of AD. In addition, vascular changes occur at early stage of AD and are also involved in AD pathophysiology. Vascular changes may exacerbate A β pathology of AD through inhibiting A β clearance from the brain [89, 90], promoting influx of peripheral A β through the BBB [91], increasing APP expression [92, 93], which contribute to A β accumulation both in the parenchyma and blood vessels [94]. Consistently, altered BBB permeability and function precedes A β pathology and cognitive impairment of AD [95]. Therefore, assessment of vascular microstructure or function may provide valuable biomarker for early diagnosis of AD. Vascular signs may serve as novel biomarkers to provide pathophysiological insight for early diagnosis of AD. Although the currently used biomarkers for

vascular changes are limited to MRI [96], recent research reports have indicated the possibility of using retinal capillary imaging as potential technique for AD diagnosis. For example, compare to wild-type mice, a significant retinal capillary degeneration in APP/PS1 mice was found as early as 8-month of age and was significantly worse during AD progression. This capillaries degeneration was correlated with substantial vascular PDGFR β deficiency and prominent vascular A β deposition. Moreover, tight-junction alterations such as downregulated claudin-1 expression and increased permeability of brain-retina-barrier (BRB) were also found in APP/PS1 mice [97]. This retinal capillary degeneration and compromised BRB integrity at early stages in AD mouse may provide a new strategy for development of novel targets for AD diagnosis. Consistently, maximal venous and arterial reactions to monochromatic flicker stimulation were increased in AD patients as compared to healthy control and to subjects with MCI. Moreover, the arterial flicker response curve differed in MCI as compared to healthy control, as evidenced by significantly higher reactive magnitude and the more emphasized constriction in MCI [98]. These findings suggest that retinal structure or function is damaged during the early stage of AD. The retinal vessel reaction to flicker stimulation could be considered as a promising non-invasive and easy-to-administer biomarker for the diagnosis and monitoring of AD [98]. Similarly, Golzan et al. found that the amplitude of retinal venous pulsations was negatively correlated with the neocortical A β load, whereas the amplitude of retinal arterial pulsations was positively correlated with neocortical A β load. Retinal ganglion cell layer thickness was significantly decreased in AD patients. The correlation between retinal vascular alterations and A β load predicts a vascular component to AD pathogenesis and progression. Dynamic monitor of retinal vascular may provide reliable marker to aid in the assessment of AD during preclinical phase without significant cognitive manifestations [99]. Worth noting, one study in 2019, found that retinal vasculature did not discriminate AD patients from healthy controls [100]. However, much more recent experimental data were reported to support the utility of retinal vascular changes as potential marker of AD [75, 101–104].

Cerebrovascular-targeting therapy against AD

While the current therapeutic strategies based on ATN theories yield very limited benefits against AD, recent studies have indicated that vascular lesions of dysfunction are involved in the pathogenesis and progression of AD. Various vascular events have been found to precede the

pathological changes and clinical symptoms of AD, and vascular lesions share many common risk factors with AD. Vascular-recovering or remodeling may provide novel strategies to prevent the pathogenesis or delay progress of AD.

Microangiopathies have been found in APP/PS1 mice at 9 months of age, which can be ameliorated by administration of Liraglutide [105]. Consistently, implantation of mesenchymal stem cell-derived pericytes, the well-accepted modulator of cerebral vascular function, increased the brain microcirculation in APP/PS1 mice at the age of 18 to 20 months. Importantly, the levels of insoluble A β 40 and A β 42 together with the A β deposition were significantly reduced in hippocampus of the pericyte-injected hemisphere of APP/PS1 mice than that of the contralateral side. These findings indicated that the remodeling cerebral vascular via cell-based therapy can reduce brain A β -related pathologies, and could serve as a promising strategy for AD prevention and therapy [106].

Much more specifically, treatment of nicergoline, a selective α 1A-AR blocker, may be beneficial to the severity of cognitive impairment, of daily living activities decline, and psychiatric symptoms in early AD patients. The follow-up study further revealed significant increases of relative regional CBF in AD patients. The increased perfusion in the superior frontal gyrus may be related to the delay or prevention of progressive cognitive deterioration in AD [107].

CONCLUSIONS

AD is the most common cause of dementia, accounting for about 60% to 80% of cases. The pathological hallmarks including A β (plaques) and twisted strands of tau protein (tangles) are accompanied by progressive neurodegeneration and brain tissue damage. Unfortunately, so far, no therapeutic candidate, which inhibits A β aggregation or tau phosphorylation, has been approved to treat AD, and no satisfied early diagnostic scheme has been established for AD. The changes in CBF may impair cognition via promoting A β and tau pathologies or directly inducing neurodegeneration. Abnormal adrenergic activities such as AR-signaling may be involved in this process. Increasing lines of evidence from either preclinical or clinical studies have revealed that the cerebral vascular alterations during early stages of AD may contribute to the pathogenesis and progression of the disease. Cerebral vascular assessment may provide promising tools for AD early diagnosis and

cerebral vascular remodeling may yield benefits to AD therapy.

AUTHOR CONTRIBUTIONS

Song Li and Che Wang performed database search. Song Li, Che Wang, Zhen Wang and Jun Tan engaged in fruitful discussions about the content of manuscript. Song Li and Che Wang drafted, edited and finalized the manuscript. Zhen Wang edited the manuscript. Jun Tan contributes to the conception and design of manuscript. All the authors discussed the results and commented on the final version of the manuscript.

ACKNOWLEDGMENTS

The authors would thank Dr. Jiang Chen for his constructive comments during manuscript preparation and drawing the schematic diagrams.

CONFLICTS OF INTEREST

The authors declare no conflicts of interest related to this study.

FUNDING

This study was supported by the High-level Talent Foundation of Guizhou Medical University (YJ19017, HY2020, J.T.), National Natural Science Foundation of China (NSFC) (82060211, J.T.), the National Key Technologies R & D Program of China during the 9th Five-Year Plan Period [4008 (2019), J.T.], and Zhejiang Provincial Natural Science foundation (LY19HH090013, ZW).

REFERENCES

1. 2021 Alzheimer's disease facts and figures. *Alzheimers Dement.* 2021; 17:327–406. <https://doi.org/10.1002/alz.12328> PMID:33756057
2. de la Torre JC. Alzheimer disease as a vascular disorder: nosological evidence. *Stroke.* 2002; 33:1152–62. <https://doi.org/10.1161/01.str.0000014421.15948.67> PMID:11935076
3. Royall DR. Alzheimer disease as a vascular disorder: nosological evidence. *Stroke.* 2002; 33:2147–48. <https://doi.org/10.1161/01.str.0000028987.97497.22> PMID:12215573
4. Sweeney MD, Montagne A, Sagare AP, Nation DA, Schneider LS, Chui HC, Harrington MG, Pa J, Law M, Wang DJJ, Jacobs RE, Doubal FN, Ramirez J, et al.

- Vascular dysfunction-The disregarded partner of Alzheimer's disease. *Alzheimers Dement.* 2019; 15:158–67.
<https://doi.org/10.1016/j.jalz.2018.07.222>
PMID:30642436
5. Kisler K, Nelson AR, Montagne A, Zlokovic BV. Cerebral blood flow regulation and neurovascular dysfunction in Alzheimer disease. *Nat Rev Neurosci.* 2017; 18:419–34.
<https://doi.org/10.1038/nrn.2017.48>
PMID:28515434
 6. Sur S, Lin Z, Li Y, Yasar S, Rosenberg P, Moghekar A, Hou X, Kalyani R, Hazel K, Pottanat G, Xu C, van Zijl P, Pillai J, et al. Association of cerebrovascular reactivity and Alzheimer pathologic markers with cognitive performance. *Neurology.* 2020; 95:e962–72.
<https://doi.org/10.1212/WNL.00000000000010133>
PMID:32661101
 7. Lao PJ, Gutierrez J, Keator D, Rizvi B, Banerjee A, Igwe KC, Laing KK, Sathishkumar M, Moni F, Andrews H, Krinsky-McHale S, Head E, Lee JH, et al. Alzheimer-Related Cerebrovascular Disease in Down Syndrome. *Ann Neurol.* 2020; 88:1165–77.
<https://doi.org/10.1002/ana.25905>
PMID:32944999
 8. Slater C, Wang Q. Alzheimer's disease: An evolving understanding of noradrenergic involvement and the promising future of electroceutical therapies. *Clin Transl Med.* 2021; 11:e397.
<https://doi.org/10.1002/ctm2.397>
PMID:33931975
 9. Jack CR Jr, Bennett DA, Blennow K, Carrillo MC, Dunn B, Haeberlein SB, Holtzman DM, Jagust W, Jessen F, Karlawish J, Liu E, Molinuevo JL, Montine T, et al, and Contributors. NIA-AA Research Framework: Toward a biological definition of Alzheimer's disease. *Alzheimers Dement.* 2018; 14:535–62.
<https://doi.org/10.1016/j.jalz.2018.02.018>
PMID:29653606
 10. Ebenau JL, Timmers T, Wesselman LMP, Verberk IMW, Verfaillie SCJ, Slot RER, van Harten AC, Teunissen CE, Barkhof F, van den Bosch KA, van Leeuwenstijn M, Tomassen J, Braber AD, et al. ATN classification and clinical progression in subjective cognitive decline: The SCIENCe project. *Neurology.* 2020; 95:e46–58.
<https://doi.org/10.1212/WNL.00000000000009724>
PMID:32522798
 11. Kimura T, Hashimura T, Miyakawa T. Observations of microvessels in the brain with Alzheimer's disease by the scanning electron microscopy. *Jpn J Psychiatry Neurol.* 1991; 45:671–76.
<https://doi.org/10.1111/j.1440-1819.1991.tb01189.x>
PMID:1800815
 12. Kelly P, Denver P, Satchell SC, Ackermann M, Konerding MA, Mitchell CA. Microvascular ultrastructural changes precede cognitive impairment in the murine APP^{swe}/PS1^{dE9} model of Alzheimer's disease. *Angiogenesis.* 2017; 20:567–80.
<https://doi.org/10.1007/s10456-017-9568-3>
PMID:28741167
 13. Merkulova-Rainon T, Mantsounga CS, Broquères-You D, Pinto C, Vilar J, Cifuentes D, Bonnin P, Kubis N, Henrion D, Silvestre JS, Lévy BI. Peripheral post-ischemic vascular repair is impaired in a murine model of Alzheimer's disease. *Angiogenesis.* 2018; 21:557–69.
<https://doi.org/10.1007/s10456-018-9608-7>
PMID:29516292
 14. Asllani I, Habeck C, Scarmeas N, Borogovac A, Brown TR, Stern Y. Multivariate and univariate analysis of continuous arterial spin labeling perfusion MRI in Alzheimer's disease. *J Cereb Blood Flow Metab.* 2008; 28:725–36.
<https://doi.org/10.1038/sj.jcbfm.9600570>
PMID:17960142
 15. Cruz Hernández JC, Bracko O, Kersbergen CJ, Muse V, Haft-Javaherian M, Berg M, Park L, Vinarcsik LK, Ivasyk I, Rivera DA, Kang Y, Cortes-Canteli M, Peyrounette M, et al. Neutrophil adhesion in brain capillaries reduces cortical blood flow and impairs memory function in Alzheimer's disease mouse models. *Nat Neurosci.* 2019; 22:413–20.
<https://doi.org/10.1038/s41593-018-0329-4>
PMID:30742116
 16. Sojkova J, Beason-Held L, Zhou Y, An Y, Kraut MA, Ye W, Ferrucci L, Mathis CA, Klunk WE, Wong DF, Resnick SM. Longitudinal cerebral blood flow and amyloid deposition: an emerging pattern? *J Nucl Med.* 2008; 49:1465–71.
<https://doi.org/10.2967/jnumed.108.051946>
PMID:18703614
 17. Luckhaus C, Flüß MO, Wittsack HJ, Grass-Kapanke B, Jänner M, Khalili-Amiri R, Friedrich W, Supprian T, Gaebel W, Mödder U, Cohnen M. Detection of changed regional cerebral blood flow in mild cognitive impairment and early Alzheimer's dementia by perfusion-weighted magnetic resonance imaging. *Neuroimage.* 2008; 40:495–503.
<https://doi.org/10.1016/j.neuroimage.2007.11.053>
PMID:18207425
 18. Encinas M, De Juan R, Marcos A, Gil P, Barabash A, Fernández C, De Ugarte C, Cabranes JA. Regional cerebral blood flow assessed with 99mTc-ECD SPET as a marker of progression of mild cognitive impairment to Alzheimer's disease. *Eur J Nucl Med Mol Imaging.* 2003; 30:1473–80.

- <https://doi.org/10.1007/s00259-003-1277-z>
PMID:14579086
19. Hirao K, Ohnishi T, Hirata Y, Yamashita F, Mori T, Moriguchi Y, Matsuda H, Nemoto K, Imabayashi E, Yamada M, Iwamoto T, Arima K, Asada T. The prediction of rapid conversion to Alzheimer's disease in mild cognitive impairment using regional cerebral blood flow SPECT. *Neuroimage*. 2005; 28:1014–21.
<https://doi.org/10.1016/j.neuroimage.2005.06.066>
PMID:16129627
20. Borroni B, Anchisi D, Paghera B, Vicini B, Kerrouche N, Garibotto V, Terzi A, Vignolo LA, Di Luca M, Giubbini R, Padovani A, Perani D. Combined 99mTc-ECD SPECT and neuropsychological studies in MCI for the assessment of conversion to AD. *Neurobiol Aging*. 2006; 27:24–31.
<https://doi.org/10.1016/j.neurobiolaging.2004.12.010>
PMID:16298237
21. Habert MO, Horn JF, Sarazin M, Lotterie JA, Puel M, Onen F, Zanca M, Portet F, Touchon J, Verny M, Mahieux F, Giron A, Fertit B, Dubois B. Brain perfusion SPECT with an automated quantitative tool can identify prodromal Alzheimer's disease among patients with mild cognitive impairment. *Neurobiol Aging*. 2011; 32:15–23.
<https://doi.org/10.1016/j.neurobiolaging.2009.01.013>
PMID:19250707
22. Bell RD, Zlokovic BV. Neurovascular mechanisms and blood-brain barrier disorder in Alzheimer's disease. *Acta Neuropathol*. 2009; 118:103–13.
<https://doi.org/10.1007/s00401-009-0522-3>
PMID:19319544
23. Zlokovic BV. Neurovascular pathways to neurodegeneration in Alzheimer's disease and other disorders. *Nat Rev Neurosci*. 2011; 12:723–38.
<https://doi.org/10.1038/nrn3114>
PMID:22048062
24. Nation DA, Sweeney MD, Montagne A, Sagare AP, D'Orazio LM, Pachicano M, Sepeshband F, Nelson AR, Buennagel DP, Harrington MG, Benzinger TLS, Fagan AM, Ringman JM, et al. Blood-brain barrier breakdown is an early biomarker of human cognitive dysfunction. *Nat Med*. 2019; 25:270–76.
<https://doi.org/10.1038/s41591-018-0297-y>
PMID:30643288
25. Sagare AP, Bell RD, Zhao Z, Ma Q, Winkler EA, Ramanathan A, Zlokovic BV. Pericyte loss influences Alzheimer-like neurodegeneration in mice. *Nat Commun*. 2013; 4:2932.
<https://doi.org/10.1038/ncomms3932>
PMID:24336108
26. Sweeney MD, Sagare AP, Zlokovic BV. Blood-brain barrier breakdown in Alzheimer disease and other neurodegenerative disorders. *Nat Rev Neurol*. 2018; 14:133–50.
<https://doi.org/10.1038/nrneurol.2017.188>
PMID:29377008
27. Ryu JK, McLarnon JG. A leaky blood-brain barrier, fibrinogen infiltration and microglial reactivity in inflamed Alzheimer's disease brain. *J Cell Mol Med*. 2009; 13:2911–25.
<https://doi.org/10.1111/j.1582-4934.2008.00434.x>
PMID:18657226
28. Lu X, Moeini M, Li B, Lu Y, Damseh R, Pouliot P, Thorin É, Lesage F. A Pilot Study Investigating Changes in Capillary Hemodynamics and Its Modulation by Exercise in the APP-PS1 Alzheimer Mouse Model. *Front Neurosci*. 2019; 13:1261.
<https://doi.org/10.3389/fnins.2019.01261>
PMID:31920472
29. Hong J, Hong SG, Lee J, Park JY, Eriksen JL, Rooney BV, Park Y. Exercise training ameliorates cerebrovascular dysfunction in a murine model of Alzheimer's disease: role of the P2Y2 receptor and endoplasmic reticulum stress. *Am J Physiol Heart Circ Physiol*. 2020; 318:H1559–69.
<https://doi.org/10.1152/ajpheart.00129.2020>
PMID:32383993
30. Ruitenbergh A, den Heijer T, Bakker SL, van Swieten JC, Koudstaal PJ, Hofman A, Breteler MM. Cerebral hypoperfusion and clinical onset of dementia: the Rotterdam Study. *Ann Neurol*. 2005; 57:789–94.
<https://doi.org/10.1002/ana.20493>
PMID:15929050
31. Badji A, Westman E. Cerebrovascular pathology in Alzheimer's disease: Hopes and gaps. *Psychiatry Res Neuroimaging*. 2020; 306:111184.
<https://doi.org/10.1016/j.psychresns.2020.111184>
PMID:32950333
32. Iturria-Medina Y, Sotero RC, Toussaint PJ, Mateos-Pérez JM, Evans AC, and Alzheimer's Disease Neuroimaging Initiative. Early role of vascular dysregulation on late-onset Alzheimer's disease based on multifactorial data-driven analysis. *Nat Commun*. 2016; 7:11934.
<https://doi.org/10.1038/ncomms11934>
PMID:27327500
33. Love S, Miners JS. Cerebrovascular disease in ageing and Alzheimer's disease. *Acta Neuropathol*. 2016; 131:645–58.
<https://doi.org/10.1007/s00401-015-1522-0>
PMID:26711459
34. Johnson KA, Lopera F, Jones K, Becker A, Sperling R, Hilson J, Londono J, Siegert I, Arcos M, Moreno S,

- Madrigal L, Ossa J, Pineda N, et al. Presenilin-1-associated abnormalities in regional cerebral perfusion. *Neurology*. 2001; 56:1545–51.
<https://doi.org/10.1212/wnl.56.11.1545>
PMID:11402113
35. Thambisetty M, Beason-Held L, An Y, Kraut MA, Resnick SM. APOE epsilon4 genotype and longitudinal changes in cerebral blood flow in normal aging. *Arch Neurol*. 2010; 67:93–98.
<https://doi.org/10.1001/archneurol.2009.913>
PMID:20065135
36. Montagne A, Nation DA, Sagare AP, Barisano G, Sweeney MD, Chakhoyan A, Pachicano M, Joe E, Nelson AR, D'Orazio LM, Buennagel DP, Harrington MG, Benzinger TLS, et al. APOE4 leads to blood-brain barrier dysfunction predicting cognitive decline. *Nature*. 2020; 581:71–76.
<https://doi.org/10.1038/s41586-020-2247-3>
PMID:32376954
37. Lin YF, Smith AV, Aspelund T, Betensky RA, Smoller JW, Gudnason V, Launer LJ, Blacker D. Genetic overlap between vascular pathologies and Alzheimer's dementia and potential causal mechanisms. *Alzheimers Dement*. 2019; 15:65–75.
<https://doi.org/10.1016/j.jalz.2018.08.002>
PMID:30240575
38. d'Uscio LV, He T, Katusic ZS. Expression and Processing of Amyloid Precursor Protein in Vascular Endothelium. *Physiology (Bethesda)*. 2017; 32:20–32.
<https://doi.org/10.1152/physiol.00021.2016>
PMID:27927802
39. Kitazume S, Tachida Y, Kato M, Yamaguchi Y, Honda T, Hashimoto Y, Wada Y, Saito T, Iwata N, Saido T, Taniguchi N. Brain endothelial cells produce amyloid { β } from amyloid precursor protein 770 and preferentially secrete the O-glycosylated form. *J Biol Chem*. 2010; 285:40097–103.
<https://doi.org/10.1074/jbc.M110.144626>
PMID:20952385
40. Nortley R, Korte N, Izquierdo P, Hirunpattarasilp C, Mishra A, Jaunmuktane Z, Kyrargyri V, Pfeiffer T, Khennouf L, Madry C, Gong H, Richard-Loendt A, Huang W, et al. Amyloid β oligomers constrict human capillaries in Alzheimer's disease via signaling to pericytes. *Science*. 2019; 365:eaav9518.
<https://doi.org/10.1126/science.aav9518>
PMID:31221773
41. Price JM, Chi X, Hellermann G, Sutton ET. Physiological levels of beta-amyloid induce cerebral vessel dysfunction and reduce endothelial nitric oxide production. *Neurol Res*. 2001; 23:506–12.
<https://doi.org/10.1179/016164101101198758>
PMID:11474807
42. Thomas T, McLendon C, Sutton ET, Thomas G. Cerebrovascular endothelial dysfunction mediated by β -amyloid. *Neuroreport*. 1997; 8:1387–91.
<https://doi.org/10.1097/00001756-199704140-00014>
PMID:9172141
43. Niwa K, Porter VA, Kazama K, Cornfield D, Carlson GA, Iadecola C. A beta-peptides enhance vasoconstriction in cerebral circulation. *Am J Physiol Heart Circ Physiol*. 2001; 281:H2417–24.
<https://doi.org/10.1152/ajpheart.2001.281.6.H2417>
PMID:11709407
44. Thomas T, Thomas G, McLendon C, Sutton T, Mullan M. beta-Amyloid-mediated vasoactivity and vascular endothelial damage. *Nature*. 1996; 380:168–71.
<https://doi.org/10.1038/380168a0>
PMID:8600393
45. Crawford F, Suo ZM, Fang CH, Mullan M. Characteristics of the in vitro vasoactivity of β -amyloid peptides. *Exp Neurol*. 1998; 150:159–68.
<https://doi.org/10.1006/exnr.1997.6743>
PMID:9514824
46. Paris D, Humphrey J, Quadros A, Patel N, Crescentini R, Crawford F, Mullan M. Vasoactive effects of A beta in isolated human cerebrovessels and in a transgenic mouse model of Alzheimer's disease: role of inflammation. *Neurol Res*. 2003; 25:642–51.
<https://doi.org/10.1179/016164103101201940>
PMID:14503019
47. Haase N, Herse F, Spallek B, Haase H, Morano I, Qadri F, Szijarto IA, Rohm I, Yilmaz A, Warrington JP, Ryan MJ, Gollasch M, Muller DN, et al. Amyloid- β peptides activate α 1-adrenergic cardiovascular receptors. *Hypertension*. 2013; 62:966–72.
<https://doi.org/10.1161/HYPERTENSIONAHA.113.01348>
PMID:24001898
48. Suo Z, Humphrey J, Kundtz A, Sethi F, Placzek A, Crawford F, Mullan M. Soluble Alzheimers beta-amyloid constricts the cerebral vasculature in vivo. *Neurosci Lett*. 1998; 257:77–80.
[https://doi.org/10.1016/s0304-3940\(98\)00814-3](https://doi.org/10.1016/s0304-3940(98)00814-3)
PMID:9865931
49. Deane R, Du Yan S, Subramanyan RK, LaRue B, Jovanovic S, Hogg E, Welch D, Manness L, Lin C, Yu J, Zhu H, Ghiso J, Frangione B, et al. RAGE mediates amyloid-beta peptide transport across the blood-brain barrier and accumulation in brain. *Nat Med*. 2003; 9:907–13.
<https://doi.org/10.1038/nm890>
PMID:12808450
50. Dietrich HH, Xiang C, Han BH, Zipfel GJ, Holtzman DM. Soluble amyloid-beta, effect on cerebral arteriolar regulation and vascular cells. *Mol Neurodegener*. 2010; 5:15.

<https://doi.org/10.1186/1750-1326-5-15>

PMID:[20388225](https://pubmed.ncbi.nlm.nih.gov/20388225/)

51. Park L, Zhou P, Koizumi K, El Jamal S, Previti ML, Van Nostrand WE, Carlson G, Iadecola C. Brain and circulating levels of A β 1-40 differentially contribute to vasomotor dysfunction in the mouse brain. *Stroke*. 2013; 44:198–204.
<https://doi.org/10.1161/STROKEAHA.112.670976>
PMID:[23204056](https://pubmed.ncbi.nlm.nih.gov/23204056/)
52. Koster KP, Thomas R, Morris AWJ, Tai LM. Epidermal growth factor prevents oligomeric amyloid- β induced angiogenesis deficits in vitro. *J Cereb Blood Flow Metab*. 2016; 36:1865–71.
<https://doi.org/10.1177/0271678X16669956>
PMID:[27634936](https://pubmed.ncbi.nlm.nih.gov/27634936/)
53. Niwa K, Carlson GA, Iadecola C. Exogenous A β 1–40 reproduces cerebrovascular alterations resulting from amyloid precursor protein overexpression in mice. *J Cereb Blood Flow Metab*. 2000; 20:1659–68.
<https://doi.org/10.1097/00004647-200012000-00005>
PMID:[11129782](https://pubmed.ncbi.nlm.nih.gov/11129782/)
54. Koizumi K, Wang G, Park L. Endothelial dysfunction and amyloid- β -induced neurovascular alterations. *Cell Mol Neurobiol*. 2016; 36:155–65.
<https://doi.org/10.1007/s10571-015-0256-9>
PMID:[26328781](https://pubmed.ncbi.nlm.nih.gov/26328781/)
55. Koizumi K, Hattori Y, Ahn SJ, Buendia I, Ciacciarrelli A, Uekawa K, Wang G, Hiller A, Zhao L, Voss HU, Paul SM, Schaffer C, Park L, Iadecola C. Apo ϵ 4 disrupts neurovascular regulation and undermines white matter integrity and cognitive function. *Nat Commun*. 2018; 9:3816.
<https://doi.org/10.1038/s41467-018-06301-2>
PMID:[30232327](https://pubmed.ncbi.nlm.nih.gov/30232327/)
56. Donner L, Falkner K, Gremer L, Klinker S, Pagani G, Ljungberg LU, Lothmann K, Rizzi F, Schaller M, Gohlke H, Willbold D, Grenegard M, Elvers M. Platelets contribute to amyloid- β aggregation in cerebral vessels through integrin α IIb β 3-induced outside-in signaling and clusterin release. *Sci Signal*. 2016; 9:ra52.
<https://doi.org/10.1126/scisignal.aaf6240>
PMID:[27221710](https://pubmed.ncbi.nlm.nih.gov/27221710/)
57. Bennett RE, Robbins AB, Hu M, Cao X, Betensky RA, Clark T, Das S, Hyman BT. Tau induces blood vessel abnormalities and angiogenesis-related gene expression in P301L transgenic mice and human Alzheimer's disease. *Proc Natl Acad Sci U S A*. 2018; 115:E1289–98.
<https://doi.org/10.1073/pnas.1710329115>
PMID:[29358399](https://pubmed.ncbi.nlm.nih.gov/29358399/)
58. Park L, Hochrainer K, Hattori Y, Ahn SJ, Anfray A, Wang G, Uekawa K, Seo J, Palfini V, Blanco I, Acosta D, Eliezer D, Zhou P, et al. Tau induces PSD95-neuronal NOS uncoupling and neurovascular dysfunction independent of neurodegeneration. *Nat Neurosci*. 2020; 23:1079–89.
<https://doi.org/10.1038/s41593-020-0686-7>
PMID:[32778793](https://pubmed.ncbi.nlm.nih.gov/32778793/)
59. Farkas E, Luiten PGM, Bari F. Permanent, bilateral common carotid artery occlusion in the rat: a model for chronic cerebral hypoperfusion-related neurodegenerative diseases. *Brain Res Rev*. 2007; 54:162–80.
<https://doi.org/10.1016/j.brainresrev.2007.01.003>
PMID:[17296232](https://pubmed.ncbi.nlm.nih.gov/17296232/)
60. Li S, Wang W, Wang C, Tang YY. Possible involvement of NO/NOS signaling in hippocampal amyloid-beta production induced by transient focal cerebral ischemia in aged rats. *Neurosci Lett*. 2010; 470:106–10.
<https://doi.org/10.1016/j.neulet.2009.12.064>
PMID:[20043977](https://pubmed.ncbi.nlm.nih.gov/20043977/)
61. de la Torre JC, Mussivand T. Can disturbed brain microcirculation cause Alzheimer's disease? *Neurol Res*. 1993; 15:146–53.
<https://doi.org/10.1080/01616412.1993.11740127>
PMID:[8103579](https://pubmed.ncbi.nlm.nih.gov/8103579/)
62. Sun X, He G, Qing H, Zhou W, Dobie F, Cai F, Staufenbiel M, Huang LE, Song W. Hypoxia facilitates Alzheimer's disease pathogenesis by up-regulating BACE1 gene expression. *Proc Natl Acad Sci U S A*. 2006; 103:18727–32.
<https://doi.org/10.1073/pnas.0606298103>
PMID:[17121991](https://pubmed.ncbi.nlm.nih.gov/17121991/)
63. Zhang X, Zhou K, Wang R, Cui J, Lipton SA, Liao FF, Xu H, Zhang YW. Hypoxia-inducible factor 1 α (HIF-1 α)-mediated hypoxia increases BACE1 expression and beta-amyloid generation. *J Biol Chem*. 2007; 282:10873–80.
<https://doi.org/10.1074/jbc.M608856200>
PMID:[17303576](https://pubmed.ncbi.nlm.nih.gov/17303576/)
64. Sweeney MD, Sagare AP, Zlokovic BV. Cerebrospinal fluid biomarkers of neurovascular dysfunction in mild dementia and Alzheimer's disease. *J Cereb Blood Flow Metab*. 2015; 35:1055–68.
<https://doi.org/10.1038/jcbfm.2015.76>
PMID:[25899298](https://pubmed.ncbi.nlm.nih.gov/25899298/)
65. Gupta A, Iadecola C. Impaired A β clearance: a potential link between atherosclerosis and Alzheimer's disease. *Front Aging Neurosci*. 2015; 7:115.
<https://doi.org/10.3389/fnagi.2015.00115>
PMID:[26136682](https://pubmed.ncbi.nlm.nih.gov/26136682/)
66. Cao Y, Xu H, Zhu Y, Shi MJ, Wei L, Zhang J, Cheng S, Shi Y, Tong H, Kang L, Lu L, Luo H, Yang X, et al. ADAMTS13 maintains cerebrovascular integrity to

- ameliorate Alzheimer-like pathology. *PLoS Biol.* 2019; 17:e3000313.
<https://doi.org/10.1371/journal.pbio.3000313>
 PMID:31185010
67. Albrecht D, Isenberg AL, Stradford J, Monreal T, Sagare A, Pachicano M, Sweeney M, Toga A, Zlokovic B, Chui H, Joe E, Schneider L, Conti P, et al. Associations between Vascular Function and Tau PET Are Associated with Global Cognition and Amyloid. *J Neurosci.* 2020; 40:8573–86.
<https://doi.org/10.1523/JNEUROSCI.1230-20.2020>
 PMID:33046556
68. Laing KK, Simoes S, Baena-Caldas GP, Lao PJ, Kothiya M, Igwe KC, Chesebro AG, Houck AL, Pedraza L, Hernández AI, Li J, Zimmerman ME, Luchsinger JA, et al, and Alzheimer's Disease Neuroimaging Initiative. Cerebrovascular disease promotes tau pathology in Alzheimer's disease. *Brain Commun.* 2020; 2:fcaa132.
<https://doi.org/10.1093/braincomms/fcaa132>
 PMID:33215083
69. Zhang F, Gannon M, Chen Y, Yan S, Zhang S, Feng W, Tao J, Sha B, Liu Z, Saito T, Saido T, Keene CD, Jiao K, et al. β -amyloid redirects norepinephrine signaling to activate the pathogenic GSK3 β /tau cascade. *Sci Transl Med.* 2020; 12:eaay6931.
<https://doi.org/10.1126/scitranslmed.aay6931>
 PMID:31941827
70. Karczewski P, Hempel P, Bimmler M. Role of alpha1-adrenergic receptor antibodies in Alzheimer's disease. *Front Biosci (Landmark Ed).* 2018; 23:2082–89.
<https://doi.org/10.2741/4691>
 PMID:29772547
71. Stracke S, Lange S, Bornmann S, Kock H, Schulze L, Klinger-König J, Böhm S, Vogelgesang A, von Podewils F, Föel A, Gross S, Wenzel K, Wallukat G, et al. Immunoabsorption for Treatment of Patients with Suspected Alzheimer Dementia and Agonistic Autoantibodies against Alpha1a-Adrenoceptor-Rationale and Design of the IMAD Pilot Study. *J Clin Med.* 2020; 9:1919.
<https://doi.org/10.3390/jcm9061919>
 PMID:32575439
72. Ruffolo RR Jr, Nichols AJ, Stadel JM, Hieble JP. Pharmacologic and therapeutic applications of alpha 2-adrenoceptor subtypes. *Annu Rev Pharmacol Toxicol.* 1993; 33:243–79.
<https://doi.org/10.1146/annurev.pa.33.040193.001331>
 PMID:8098595
73. Handy DE, Johns C, Bresnahan MR, Tavares A, Bursztyrn M, Gavras H. Expression of alpha2-adrenergic receptors in normal and atherosclerotic rabbit aorta. *Hypertension.* 1998; 32:311–17.
<https://doi.org/10.1161/01.hyp.32.2.311>
 PMID:9719060
74. Roberts RE. Role of the extracellular signal-regulated kinase (Erk) signal transduction cascade in alpha(2) adrenoceptor-mediated vasoconstriction in porcine palmar lateral vein. *Br J Pharmacol.* 2001; 133:859–66.
<https://doi.org/10.1038/sj.bjp.0704149>
 PMID:11454659
75. Zhang JF, Wiseman S, Valdés-Hernández MC, Doubal FN, Dhillon B, Wu YC, Wardlaw JM. The Application of Optical Coherence Tomography Angiography in Cerebral Small Vessel Disease, Ischemic Stroke, and Dementia: A Systematic Review. *Front Neurol.* 2020; 11:1009.
<https://doi.org/10.3389/fneur.2020.01009>
 PMID:33013667
76. Whittington RA, Virág L, Gratuze M, Petry FR, Noël A, Poitras I, Truchetti G, Marcouiller F, Papon MA, El Khoury N, Wong K, Bretteville A, Morin F, et al. Dexmedetomidine increases tau phosphorylation under normothermic conditions in vivo and in vitro. *Neurobiol Aging.* 2015; 36:2414–28.
<https://doi.org/10.1016/j.neurobiolaging.2015.05.002>
 PMID:26058840
77. Davel AP, Kawamoto EM, Scavone C, Vassallo DV, Rossoni LV. Changes in vascular reactivity following administration of isoproterenol for 1 week: a role for endothelial modulation. *Br J Pharmacol.* 2006; 148:629–39.
<https://doi.org/10.1038/sj.bjp.0706749>
 PMID:16702995
78. Davel AP, Brum PC, Rossoni LV. Isoproterenol induces vascular oxidative stress and endothelial dysfunction via a Gi α -coupled β 2-adrenoceptor signaling pathway. *PLoS One.* 2014; 9:e91877.
<https://doi.org/10.1371/journal.pone.0091877>
 PMID:24622771
79. Wang D, Govindaiah G, Liu R, De Arcangelis V, Cox CL, Xiang YK. Binding of amyloid beta peptide to beta2 adrenergic receptor induces PKA-dependent AMPA receptor hyperactivity. *FASEB J.* 2010; 24:3511–21.
<https://doi.org/10.1096/fj.10-156661>
 PMID:20395454
80. Wang D, Fu Q, Zhou Y, Xu B, Shi Q, Igwe B, Matt L, Hell JW, Wisely EV, Oddo S, Xiang YK. β 2 adrenergic receptor, protein kinase A (PKA) and c-Jun N-terminal kinase (JNK) signaling pathways mediate tau pathology in Alzheimer disease models. *J Biol Chem.* 2013; 288:10298–307.
<https://doi.org/10.1074/jbc.M112.415141>
 PMID:23430246
81. Wisely EV, Xiang YK, Oddo S. Genetic suppression of β 2-adrenergic receptors ameliorates tau pathology in a mouse model of tauopathies. *Hum Mol Genet.* 2014; 23:4024–34.

- <https://doi.org/10.1093/hmg/ddu116>
PMID:24626633
82. Guimarães S, Moura D. Vascular adrenoceptors: an update. *Pharmacol Rev.* 2001; 53:319–56.
PMID:[11356987](https://pubmed.ncbi.nlm.nih.gov/11356987/)
83. Tournissac M, Vu TM, Vrabic N, Hozer C, Tremblay C, Mélançon K, Planel E, Pifferi F, Calon F. Repurposing beta-3 adrenergic receptor agonists for Alzheimer's disease: beneficial effects in a mouse model. *Alzheimers Res Ther.* 2021; 13:103.
<https://doi.org/10.1186/s13195-021-00842-3>
PMID:[34020681](https://pubmed.ncbi.nlm.nih.gov/34020681/)
84. Gibbs ME, Gibbs Z, Hertz L. Rescue of Abeta(1-42)-induced memory impairment in day-old chick by facilitation of astrocytic oxidative metabolism: implications for Alzheimer's disease. *J Neurochem.* 2009 (Suppl 1); 109:230–36.
<https://doi.org/10.1111/j.1471-4159.2009.05800.x>
PMID:[19393032](https://pubmed.ncbi.nlm.nih.gov/19393032/)
85. Ardestani PM, Evans AK, Yi B, Nguyen T, Coutellier L, Shamloo M. Modulation of neuroinflammation and pathology in the 5XFAD mouse model of Alzheimer's disease using a biased and selective beta-1 adrenergic receptor partial agonist. *Neuropharmacology.* 2017; 116:371–86.
<https://doi.org/10.1016/j.neuropharm.2017.01.010>
PMID:[28089846](https://pubmed.ncbi.nlm.nih.gov/28089846/)
86. Coutellier L, Ardestani PM, Shamloo M. β 1-adrenergic receptor activation enhances memory in Alzheimer's disease model. *Ann Clin Transl Neurol.* 2014; 1:348–60.
<https://doi.org/10.1002/acn3.57>
PMID:[24883337](https://pubmed.ncbi.nlm.nih.gov/24883337/)
87. Evans AK, Ardestani PM, Yi B, Park HH, Lam RK, Shamloo M. Beta-adrenergic receptor antagonism is proinflammatory and exacerbates neuroinflammation in a mouse model of Alzheimer's Disease. *Neurobiol Dis.* 2020; 146:105089.
<https://doi.org/10.1016/j.nbd.2020.105089>
PMID:[32971233](https://pubmed.ncbi.nlm.nih.gov/32971233/)
88. Winblad B, Bonura ML, Rossini BM, Battaglia A. Nicergoline in the treatment of mild-to-moderate Alzheimer's disease. *Clin Drug Investig.* 2001; 21:621–32.
<https://doi.org/10.2165/00044011-200121090-00004>
89. Deane R, Wu Z, Sagare A, Davis J, Du Yan S, Hamm K, Xu F, Parisi M, LaRue B, Hu HW, Spijkers P, Guo H, Song X, et al. LRP/amyloid beta-peptide interaction mediates differential brain efflux of Abeta isoforms. *Neuron.* 2004; 43:333–44.
<https://doi.org/10.1016/j.neuron.2004.07.017>
PMID:[15294142](https://pubmed.ncbi.nlm.nih.gov/15294142/)
90. Deane R, Wu Z, Zlokovic BV. RAGE (yin) versus LRP (yang) balance regulates Alzheimer amyloid beta-peptide clearance through transport across the blood–brain barrier. *Stroke.* 2004 (Suppl 1); 35:2628–31.
<https://doi.org/10.1161/01.STR.0000143452.85382.d1>
PMID:[15459432](https://pubmed.ncbi.nlm.nih.gov/15459432/)
91. Eisele YS, Obermüller U, Heilbronner G, Baumann F, Kaeser SA, Wolburg H, Walker LC, Staufienbiel M, Heikenwalder M, Jucker M. Peripherally applied Abeta-containing inoculates induce cerebral beta-amyloidosis. *Science.* 2010; 330:980–82.
<https://doi.org/10.1126/science.1194516>
PMID:[20966215](https://pubmed.ncbi.nlm.nih.gov/20966215/)
92. Kumar-Singh S, Pirici D, McGowan E, Serneels S, Ceuterick C, Hardy J, Duff K, Dickson D, Van Broeckhoven C. Dense-core plaques in Tg2576 and PSAPP mouse models of Alzheimer's disease are centered on vessel walls. *Am J Pathol.* 2005; 167:527–43.
[https://doi.org/10.1016/S0002-9440\(10\)62995-1](https://doi.org/10.1016/S0002-9440(10)62995-1)
PMID:[16049337](https://pubmed.ncbi.nlm.nih.gov/16049337/)
93. Weller RO, Subash M, Preston SD, Mazanti I, Carare RO. Perivascular drainage of amyloid-beta peptides from the brain and its failure in cerebral amyloid angiopathy and Alzheimer's disease. *Brain Pathol.* 2008; 18:253–66.
<https://doi.org/10.1111/j.1750-3639.2008.00133.x>
PMID:[18363936](https://pubmed.ncbi.nlm.nih.gov/18363936/)
94. Sagare AP, Bell RD, Zlokovic BV. Neurovascular dysfunction and faulty amyloid β -peptide clearance in Alzheimer disease. *Cold Spring Harb Perspect Med.* 2012; 2:a011452.
<https://doi.org/10.1101/cshperspect.a011452>
PMID:[23028132](https://pubmed.ncbi.nlm.nih.gov/23028132/)
95. Ujiie M, Dickstein DL, Carlow DA, Jefferies WA. Blood–brain barrier permeability precedes senile plaque formation in an Alzheimer disease model. *Microcirculation.* 2003; 10:463–470.
<https://doi.org/10.1038/sj.mn.7800212>
PMID:[14745459](https://pubmed.ncbi.nlm.nih.gov/14745459/)
96. Rohn TT. Proteolytic cleavage of apolipoprotein E4 as the keystone for the heightened risk associated with Alzheimer's disease. *Int J Mol Sci.* 2013; 14:14908–22.
<https://doi.org/10.3390/ijms140714908>
PMID:[23867607](https://pubmed.ncbi.nlm.nih.gov/23867607/)
97. Shi H, Koronyo Y, Fuchs DT, Sheyn J, Wawrowsky K, Lahiri S, Black KL, Koronyo-Hamaoui M. Retinal capillary degeneration and blood-retinal barrier disruption in murine models of Alzheimer's disease. *Acta Neuropathol Commun.* 2020; 8:202.

<https://doi.org/10.1186/s40478-020-01076-4>
PMID:[33228786](https://pubmed.ncbi.nlm.nih.gov/33228786/)

98. Kotliar K, Hauser C, Ortner M, Muggenthaler C, Diehl-Schmid J, Angermann S, Hapfelmeier A, Schmaderer C, Grimmer T. Altered neurovascular coupling as measured by optical imaging: a biomarker for Alzheimer's disease. *Sci Rep*. 2017; 7:12906.

<https://doi.org/10.1038/s41598-017-13349-5>
PMID:[29018233](https://pubmed.ncbi.nlm.nih.gov/29018233/)

99. Golzan SM, Goozee K, Georgevsky D, Avolio A, Chatterjee P, Shen K, Gupta V, Chung R, Savage G, Orr CF, Martins RN, Graham SL. Retinal vascular and structural changes are associated with amyloid burden in the elderly: ophthalmic biomarkers of preclinical Alzheimer's disease. *Alzheimers Res Ther*. 2017; 9:13.

<https://doi.org/10.1186/s13195-017-0239-9>
PMID:[28253913](https://pubmed.ncbi.nlm.nih.gov/28253913/)

100. den Haan J, van de Kreeke JA, van Berckel BN, Barkhof F, Teunissen CE, Scheltens P, Verbraak FD, Bouwman FH. Is retinal vasculature a biomarker in amyloid proven Alzheimer's disease? *Alzheimers Dement (Amst)*. 2019; 11:383–91.

<https://doi.org/10.1016/j.dadm.2019.03.006>
PMID:[31193094](https://pubmed.ncbi.nlm.nih.gov/31193094/)

101. Chua J, Hu Q, Ke M, Tan B, Hong J, Yao X, Hilal S, Venkatasubramanian N, Garhöfer G, Cheung CY, Wong TY, Chen CL, Schmetterer L. Retinal microvasculature dysfunction is associated with Alzheimer's disease and mild cognitive impairment. *Alzheimers Res Ther*. 2020; 12:161.

<https://doi.org/10.1186/s13195-020-00724-0>
PMID:[33276820](https://pubmed.ncbi.nlm.nih.gov/33276820/)

102. Salobar-Garcia E, Méndez-Hernández C, Hoz R, Ramírez AI, López-Cuenca I, Fernández-Albarral JA, Rojas P, Wang S, García-Feijoo J, Gil P, Salazar JJ, Ramírez JM. Ocular Vascular Changes in Mild Alzheimer's Disease Patients: Foveal Avascular Zone, Choroidal Thickness, and ONH Hemoglobin Analysis. *J Pers Med*. 2020; 10:231.

<https://doi.org/10.3390/jpm10040231>
PMID:[33203157](https://pubmed.ncbi.nlm.nih.gov/33203157/)

103. Wu SZ, Masurkar AV, Balcer LJ. Afferent and Efferent Visual Markers of Alzheimer's Disease: A Review and Update in Early Stage Disease. *Front Aging Neurosci*. 2020; 12:572337.

<https://doi.org/10.3389/fnagi.2020.572337>
PMID:[33061906](https://pubmed.ncbi.nlm.nih.gov/33061906/)

104. Asanad S, Mohammed I, Sadun AA, Saeedi OJ. OCTA in neurodegenerative optic neuropathies: emerging biomarkers at the eye-brain interface. *Ther Adv Ophthalmol*. 2020; 12:2515841420950508.

<https://doi.org/10.1177/2515841420950508>
PMID:[32923939](https://pubmed.ncbi.nlm.nih.gov/32923939/)

105. Kelly P, McClean PL, Ackermann M, Konerding MA, Hölscher C, Mitchell CA. Restoration of cerebral and systemic microvascular architecture in APP/PS1 transgenic mice following treatment with Liraglutide™. *Microcirculation*. 2015; 22:133–45.

<https://doi.org/10.1111/micc.12186>
PMID:[25556713](https://pubmed.ncbi.nlm.nih.gov/25556713/)

106. Tachibana M, Yamazaki Y, Liu CC, Bu G, Kanekiyo T. Pericyte implantation in the brain enhances cerebral blood flow and reduces amyloid- β pathology in amyloid model mice. *Exp Neurol*. 2018; 300:13–21.

<https://doi.org/10.1016/j.expneurol.2017.10.023>
PMID:[29106980](https://pubmed.ncbi.nlm.nih.gov/29106980/)

107. Im JJ, Jeong HS, Park JS, Yang Y, Na SH, Oh JK, Chung YA, Song IU. Changes in Regional Cerebral Perfusion after Nicergoline Treatment in Early Alzheimer's Disease: A Pilot Study. *Dement Neurocogn Disord*. 2017; 16:104–09.

<https://doi.org/10.12779/dnd.2017.16.4.104>
PMID:[30906380](https://pubmed.ncbi.nlm.nih.gov/30906380/)