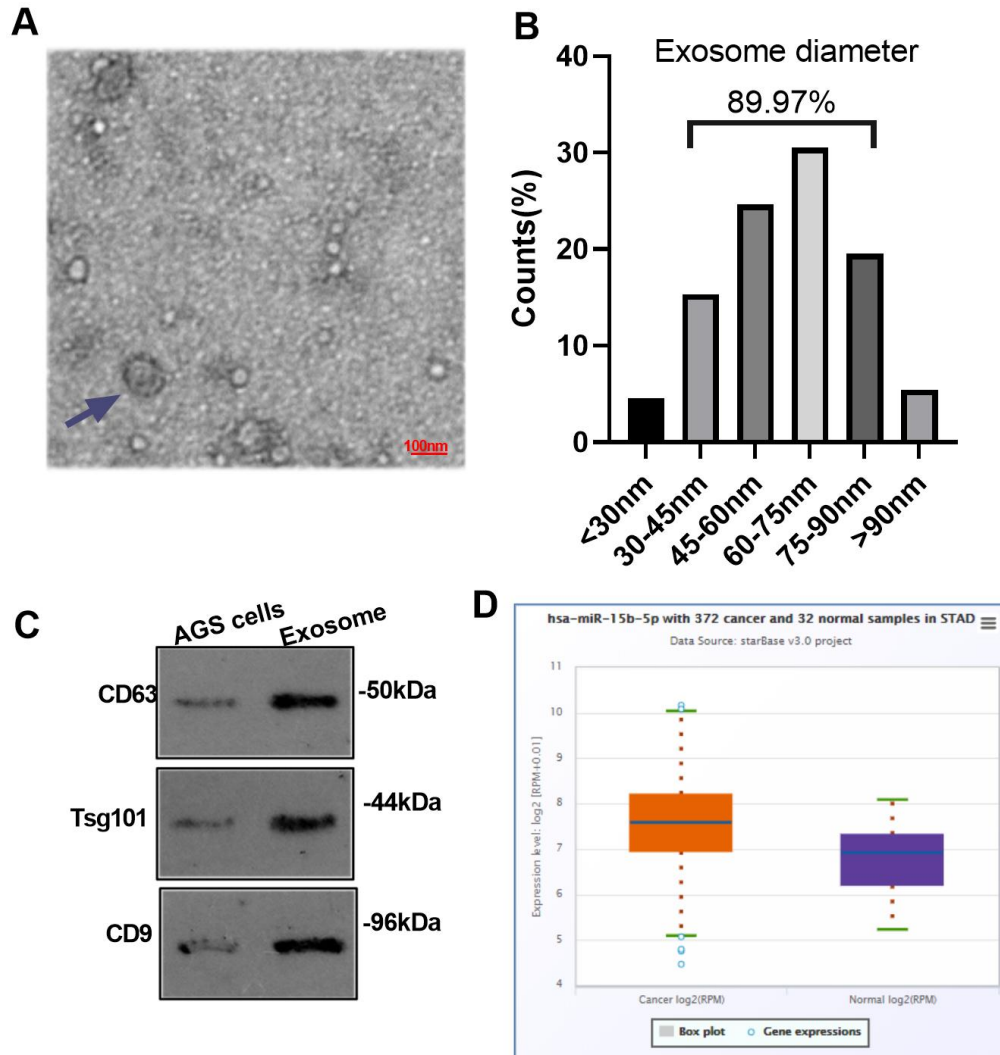


SUPPLEMENTARY FIGURE



Supplementary Figure 1. (A) The images of the isolated extracellular vesicles scanning electron microscope. (B) The diameter distribution of the isolated extracellular vesicles. (C) Western blot was used for detecting CD63, CD9 and Tsg101 in GC cells or the isolated extracellular vesicles. (D) Starbase (<http://starbase.sysu.edu.cn/>) was used for analyzing miR-15b-5p expression in Stomach Adenocarcinoma.