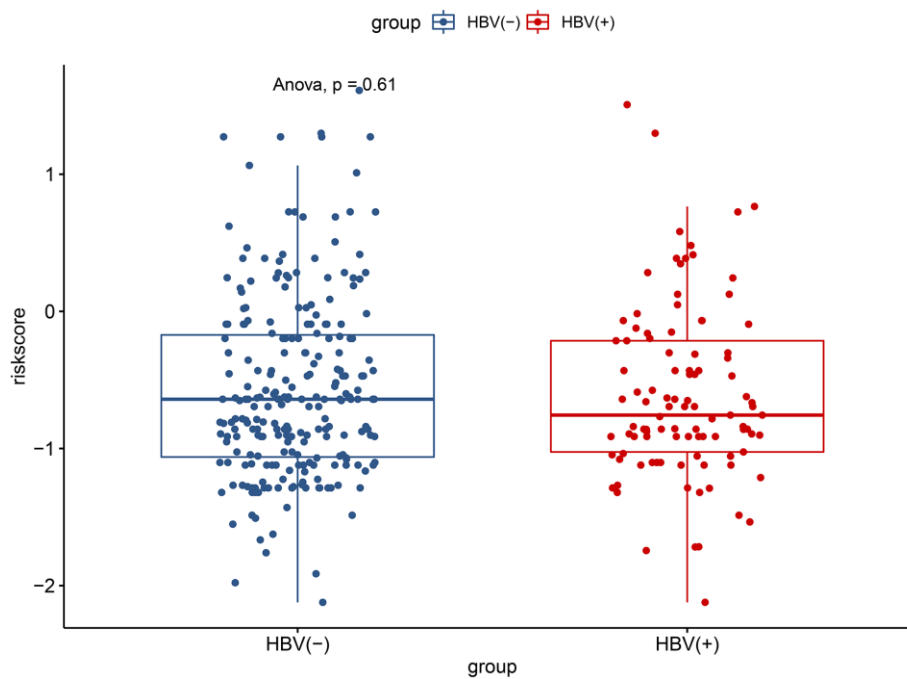
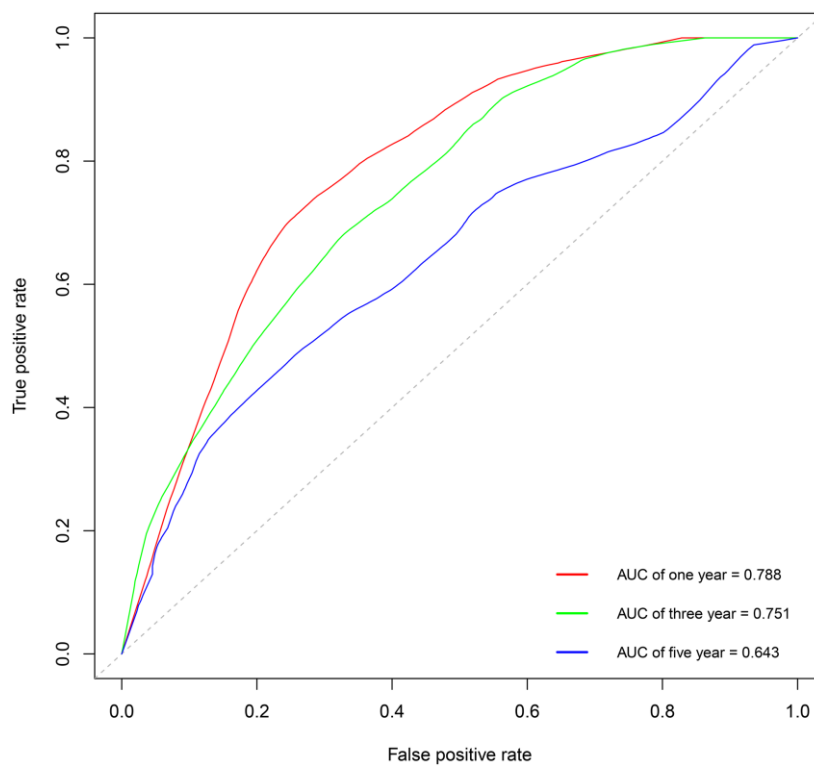


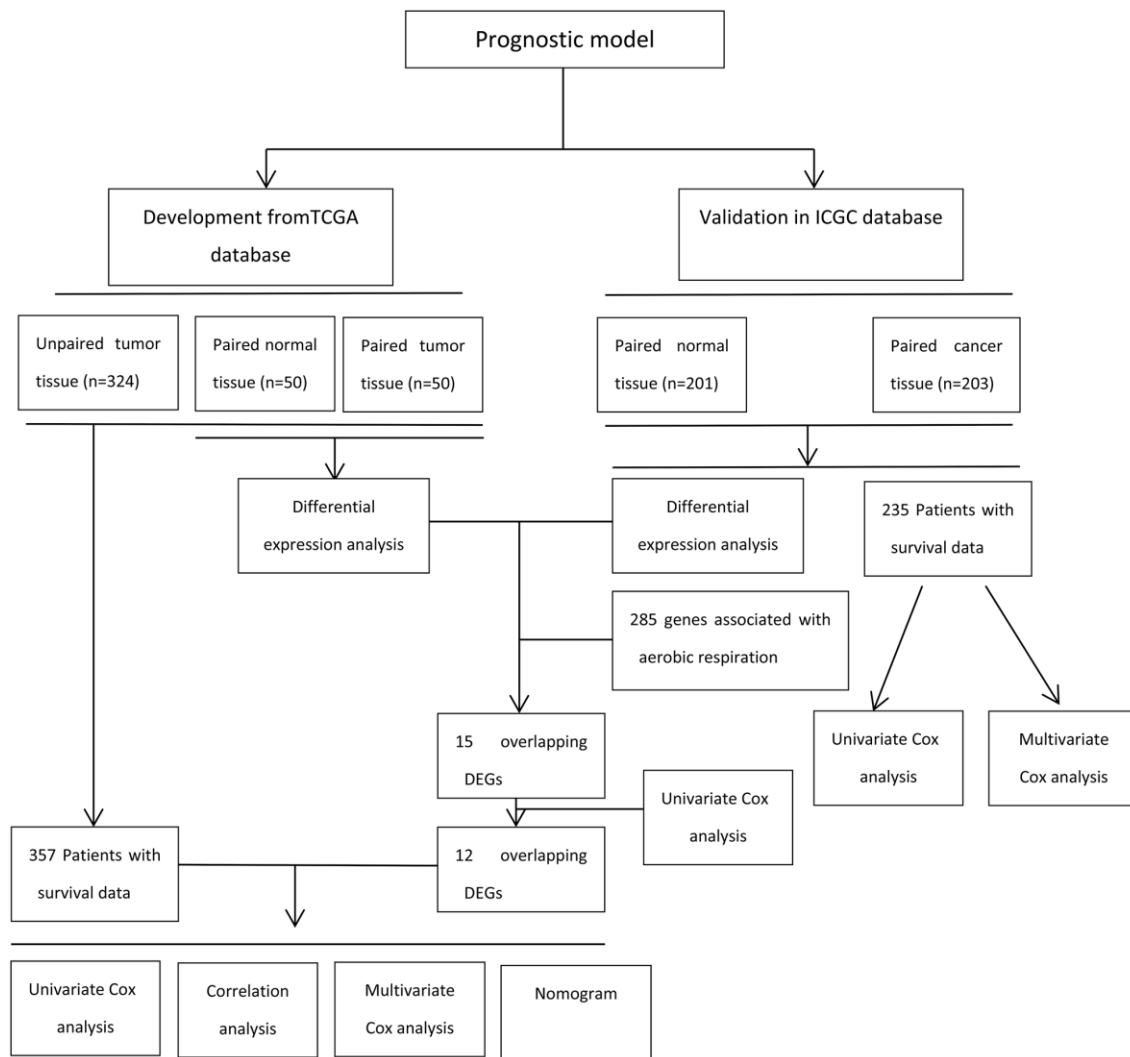
SUPPLEMENTARY FIGURES



Supplementary Figure 1. No significant differences of risk score were found between HBV-related HCC and non-HBV HCC.



Supplementary Figure 2. Survival-dependent receiver operating characteristic (ROC) curves showed the prognostic value of the prognostic model based on genes of aerobic respiration and glycolysis.



Supplementary Figure 3. Flow chart of establishing a prognostic model based on 12 genes for HCC.