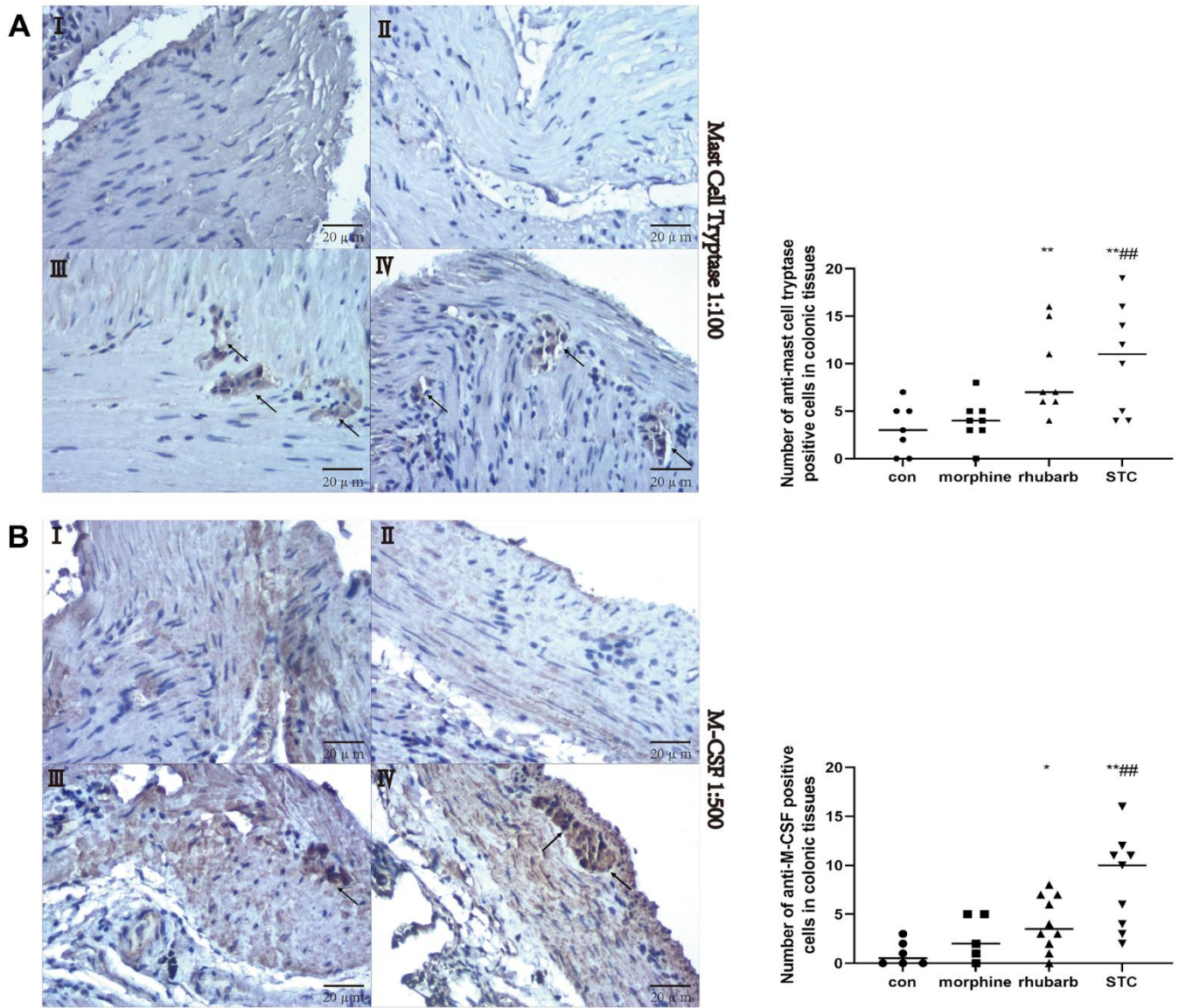
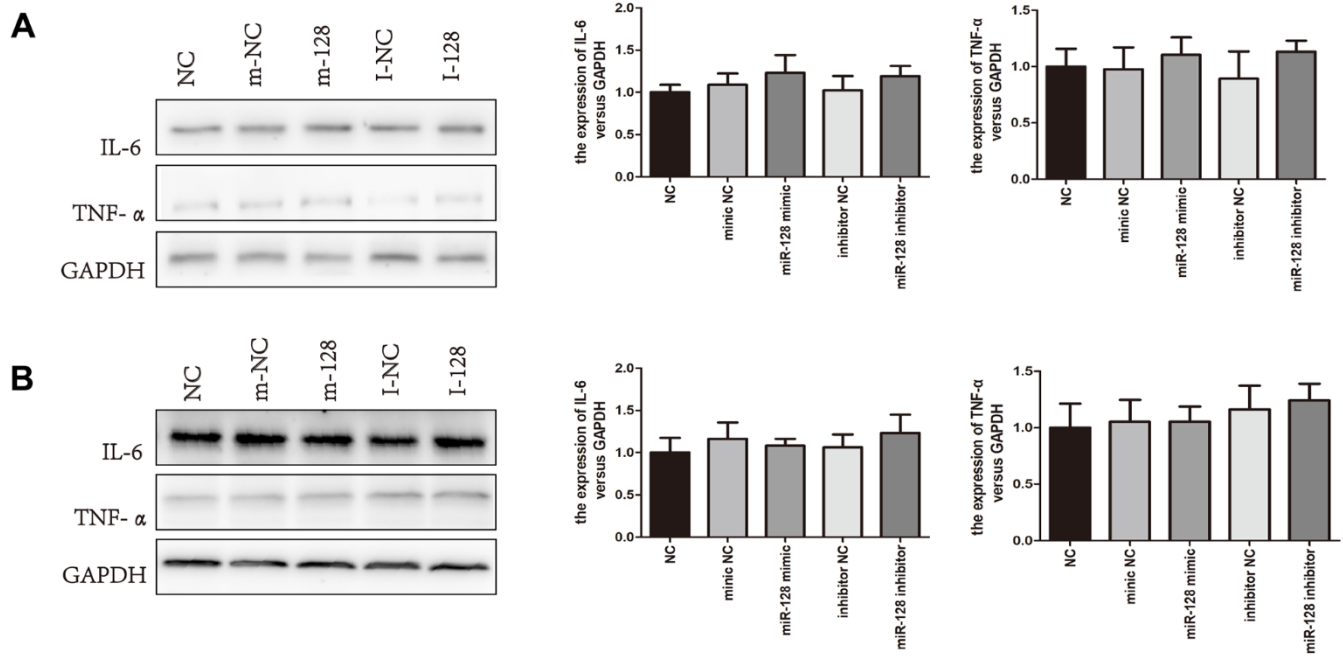


SUPPLEMENTARY FIGURES



**Supplementary Figure 1. The distribution of mast cell tryptase positive and M-CSF positive cells in colonic samples. (A)** IHC staining (anti-mast cell tryptase) performed on colonic tissues [original magnification  $\times 40$ ]. I: saline group, II: morphine group, III rhubarb group, IV morphine+rhubarb group (STC) **(B)** IHC staining (anti-M-CSF) performed on colonic tissues [original magnification  $\times 40$ ]. I saline group, II: morphine group, III rhubarb group, IV morphine+rhubarb group (STC). \* $P < 0.05$  versus saline group, \*\* $P < 0.01$  versus saline group, # $P < 0.05$  versus morphine group, ## $P < 0.01$  versus morphine group.





**Supplementary Figure 3. The effect of microRNA-128 inhibitor on CT26.WT only or RAW264.7 only.** (A) The protein expression levels of IL-6 and TNF- $\alpha$  after miR-128 interfered in CT26.WT cells. (B) The protein expression levels of IL-6 and TNF- $\alpha$  after miR-128 interfered in RAW264.7 cells.