

A forced swim-based rat model of premenstrual depression: effects of hormonal changes and drug intervention

Sheng Wei^{1,2,3,*}, Xiwen Geng^{2,3,*}, Zifa Li³, Kaiyong Xu³, Minghui Hu^{2,3}, Hongyun Wu⁴, Wei Shi⁵, Mingqi Qiao²

¹Department of Neurosurgery, Qilu Hospital of Shandong University and Brain Science Research Institute, Shandong University, Ji'nan 250012, China

²Key Laboratory of Traditional Chinese Medicine Classical Theory, Ministry of Education, Shandong University of Traditional Chinese Medicine, Ji'nan 250355, China

³Experimental Center, Shandong University of Traditional Chinese Medicine, Ji'nan 250355, China

⁴Department of Encephalopathy, Affiliated Hospital of Shandong University of Traditional Chinese Medicine, Ji'nan 250011, China

⁵Department of Gynecology, Affiliated Hospital of Shandong University of Traditional Chinese Medicine, Ji'nan 250011, China

*Equal contribution

Correspondence to: Wei Shi, Mingqi Qiao; email: 71000131@sducm.edu.cn, gmingqi@sducm.edu.cn

Keywords: premenstrual dysphoric disorder, animal model standardization, estrus cycle, forced swimming test, *Gabra4*

Received: June 3, 2020

Accepted: September 20, 2020

Published: November 21, 2020

Copyright: © 2020 Wei et al. This is an open access article distributed under the terms of the [Creative Commons Attribution License](https://creativecommons.org/licenses/by/3.0/) (CC BY 3.0), which permits unrestricted use, distribution, and reproduction in any medium, provided the original author and source are credited.

ABSTRACT

Premenstrual dysphoric disorder (PMDD), a form of premenstrual syndrome (PMS), is a severe health disturbance that affects a patient's emotions; it is caused by periodic psychological symptoms, and its pathogenesis remains unclear. As depression-like symptoms are found in a majority of clinical cases, a reliable animal model of premenstrual depression is indispensable to understand the pathogenesis. Herein, we describe a novel rat model of premenstrual depression, based on the forced swimming test, with a regular estrous cycle. The results showed that in the estrous cycle, the depression-like behavior of rats occurred in the non-receptive phase and disappeared in the receptive phase. Following ovariectomy, the depression-like symptoms disappeared and returned after a hormone priming regimen. Moreover, fluoxetine, an anti-depressant, could reverse the behavioral symptoms in these model rats with normal estrous cycle. Further, the model rats showed significant changes in the serum levels of estrogen and progesterone, hippocampal levels of allopregnanolone, 5-hydroxytryptamine, norepinephrine, and γ -aminobutyric acid (GABA), and in the expression of GABA_A receptor 4 α subunit, all of which were reversed to physiological levels by fluoxetine. Overall, we established a reliable and standardized rat model of premenstrual depression, which may facilitate the elucidation of PMS/PMDD pathogenesis and development of related therapies.

INTRODUCTION

Premenstrual syndrome (PMS) is a common mental health disturbance affecting women of childbearing age. Approximately 5–8% of patients with PMS manifest severe and debilitating symptoms; they are diagnosed with the severe form of PMS referred to as premenstrual

dysphoric disorder (PMDD) [1, 2]. The emotional or physical symptoms of PMDD including irritability, depression, anxiety, and anger generally occur in the premenstrual phase of the menstrual cycle and subside with the end of menstruation [2, 3]. These symptoms, especially depression, severely interfere with work, school, usual social activities, and interpersonal

relationships (e.g., avoidance of social activities, decreased productivity and efficiency at work, school, or home); therefore, a better understanding of the etiology and pathogenesis of PMDD is needed.

Clinically, the symptoms of PMS/PMDD have been confirmed to be related to cyclic variations in sex hormones occurring during the luteal phase, and patients commonly experience a much sharper decline in progesterone level at the end of the luteal phase when the depression-like symptoms are the most severe [4–6]. Moreover, these symptoms disappear in some patients following ovariectomy or treatment with oral contraceptives [7–9]. In an attempt to improve the quality of life, some patients used hormones to artificially induce the menstrual cycle [10–12] or discontinued oral contraceptives, which led to symptom recurrence [13]. This evidence suggests a need to establish and verify an animal model of PMDD.

An animal model of PMDD is indispensable to further explore its pathogenesis and for the development of therapies. Although several rodent models of PMDD have been developed, most of the related studies have primarily focused on the anxiety-like behavior or the behavior of anxiety mixed with depression [13–16]. Currently, the progesterone withdrawal paradigm is the most widely used animal model; it replicates some key features of PMDD with long-term exogenous steroid hormone administration, followed by abrupt hormone withdrawal [14–16]. Generally, in the progesterone withdrawal paradigm, progesterone is first intraperitoneally injected for 7 days. Then, these animals are stratified into groups and the drug under study is administered till the end of the experiment. In this period, progesterone is continuously injected for about 21 days, and behavioral experiments and samplings are performed within 72 hours after the progesterone injection. In the abovementioned modeling protocol, drug administration, and testing, the estrous cycle is not taken into account [15]. Obviously, this model fails to simulate the core characteristics of PMS (the estrous cycle-dependent symptoms), which occur in the premenstrual period and disappear in the postmenstrual phase. Additionally, the progesterone withdrawal paradigm cannot be used to reveal or mimic the mechanisms underlying real clinical cases of PMDD. Previous studies reported that specific encephalic regions of some patients are more sensitive to variations in allopregnanolone level than those of other patients; moreover, only some of the patients, but not all, developed severe symptoms of PMDD [5, 17–19]. In light of these limitations of the progesterone withdrawal paradigm, researchers have developed newer animal models of PMDD using different behavioral paradigms to mimic the mechanism underlying real cases of

PMDD. These include animal models that mainly manifest anxiety-like behaviors, such as resident–intruder [20] and burying harmless objects [21]. In addition, models that mainly show depression-like behaviors have also been developed; to date, only two studies have reported the use of a forced swim-based model of premenstrual depression [22, 23]. However, information on the systematic and precise working of this model, such as the neurochemical and central nervous system mechanisms, is lacking. As depression is a hallmark symptom of PMDD, the establishment of a reliable PMDD model that primarily manifests depression-like symptoms is essential; such a model will likely assist both the exploration of the mechanism of PMS/PMDD under conditions of depressive symptoms and the development of relevant therapies.

This study aimed to establish a rat model of premenstrual depression, based on the forced swimming test (FST), with a regular estrous cycle. Following ovariectomy and a hormone priming regimen, we assessed depression-like behavior to verify the relationship between the depression-like symptoms and the menstrual cycle. Using the anti-depressant fluoxetine, we conducted a pharmacodynamic effect analysis via a behavioral test in this premenstrual depression model (Figure 1A). In addition, several studies have previously shown that PMDD symptoms in animal models are caused by a decrease in progesterone levels; this consequently causes a change in monoamine neuro-transmitter levels and upregulation of γ -aminobutyric acid A receptor (GABA_AR) subunit expression in the central nervous system [1, 4, 24–27]. Therefore, this study also assessed the serum levels of estrogen (E₂) and progesterone, the hippocampal levels of 5-hydroxytryptamine (5-HT), norepinephrine (NE), γ -aminobutyric acid (GABA), and allopregnanolone (ALLO), and the expression of GABA_AR subunit alpha 4 (GABRA4) in the hippocampus of rats in the control, model, and model + fluoxetine groups (Figure 1B). Through this comprehensive approach, a reliable rat model of premenstrual depression was established and assessed.

RESULTS

Evaluation of the rat model of premenstrual depression by FST

Results of the FST after model establishment and screening

After stratifying the experimental rats into the control and model groups, the results of the three FSTs, including two in the diestrus 1 (D1) phase (the first test in the non-receptive phase [N1] and the second test in the non-receptive phase [N2]) and one in the

proestrus/estrus (P/E) phase (receptive phase [R]), were analyzed (Figure 2). The results of the analysis of variance (ANOVA) showed that the group factor had a significant effect on immobility duration ($F(1,22)=22.52, p<0.0001$), immobility number ($F(1,22)=107.4, p<0.0001$), and immobility latency ($F(1,22)=14.76, p=0.0009$). In the N1 and N2 tests, rats in the model group ($n=16$) had a longer immobility duration (N1, $p=0.0001$; N2, $p<0.0001$), higher immobility number (N1, $p<0.0001$; N2, $p<0.0001$), and shorter immobility latency (N1, $p=0.0434$; N2, $p=0.0037$) than those in the control group ($n=8$). However, both groups showed no differences in the R phase.

Results of the FST after ovariectomy and hormone priming regimen

As shown in Figure 3, the results of the FST performed in ovariectomized rats revealed no differences between the control and model groups. However, after the hormone priming regimen (Figure 4), significant differences were detected in the non-receptive phase but

not in the receptive phase. The group factor had an obvious effect on the immobility duration in the non-receptive phase ($F(1,22)=8.943, p=0.0020$), and the model group had a longer immobility duration ($p<0.0001$) than the control group. The same effect of group factor was observed for the immobility number ($F(1,22)=45.66, p<0.0001$) with a higher value in the model group ($p<0.0001$) compared to that in the control group. Group factor also had an effect on the immobility latency ($F(1,22)=13.91, p=0.0012$), with the model group showing a longer latency ($p<0.0001$) than the control group.

Results of the FST after fluoxetine treatment

After administration of fluoxetine to the ovariectomized hormone-primed model animals, the FST was performed again during the non-receptive and receptive phases. As shown in Figure 5, the results of the ANOVA showed significant differences between the different groups (control, model, and model + fluoxetine groups) for immobility duration ($F(2,21)=39.14, p<0.0001$),

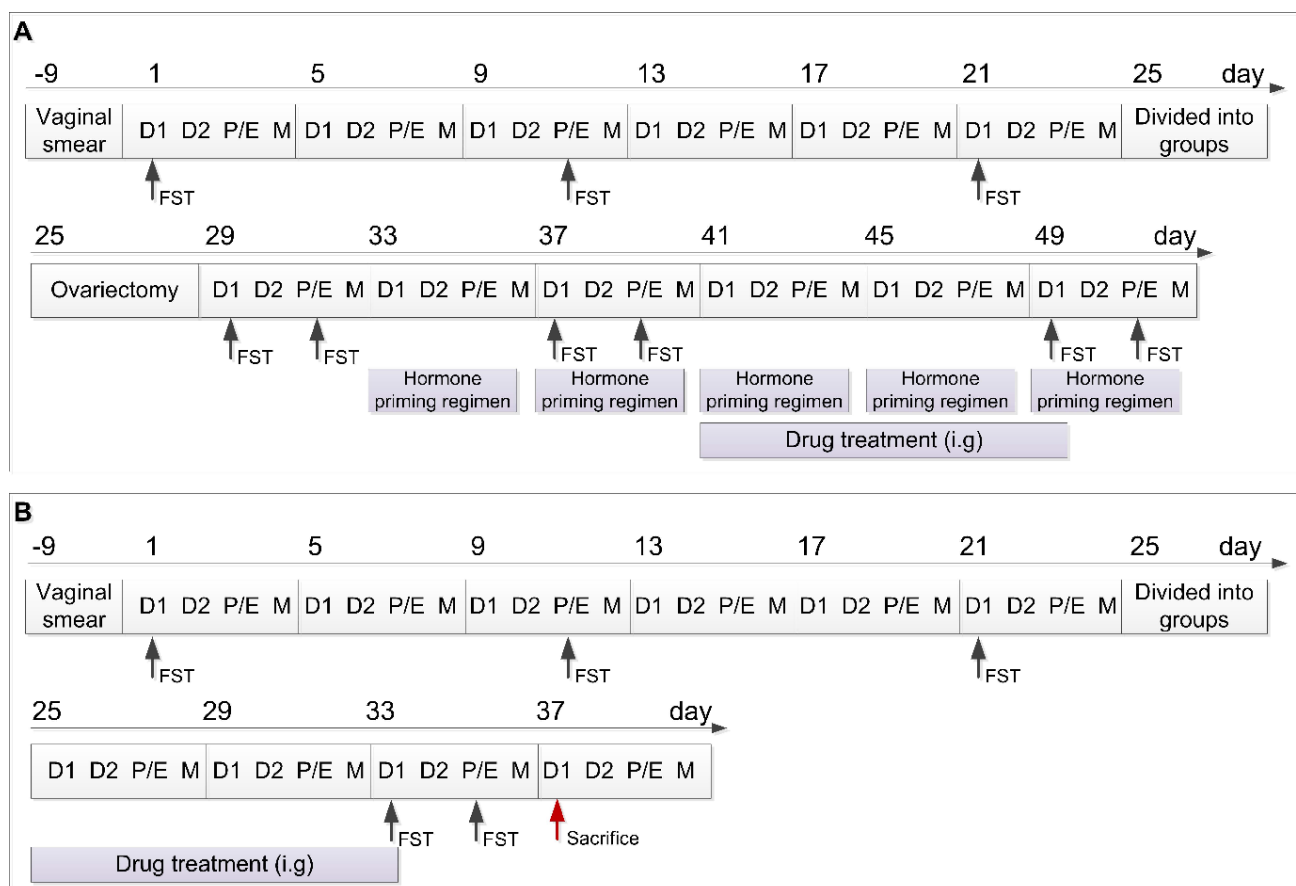


Figure 1. Schedule of the experimental design including the two experimental parts. (A) Schedule of experimental part 1. **(B)** Schedule of experimental part 2. D1, Diestrus 1 phase; D2, Diestrus 2 phase; P/E, Proestrus/Estrus phase; M, Metestrus phase; FST, Forced swimming test; i.g., intragastrically.

immobility number ($F(2,21)=19.95$, $p<0.0001$), and immobility latency ($F(2,21)=11.19$, $p=0.0005$). Differences between the groups were also observed in the non-receptive phase. The model group ($n=8$) had a longer immobility duration ($p=0.0002$) than the control group ($n=8$); however, treatment with fluoxetine reversed this effect ($n=8$, $p<0.0001$). Similar results were obtained for the immobility number (control vs model, $p<0.0001$; model vs model + fluoxetine, $p<0.0001$). In addition, the model group had a shorter immobility latency than the control group ($p=0.0039$), which improved significantly following fluoxetine treatment ($p=0.0007$).

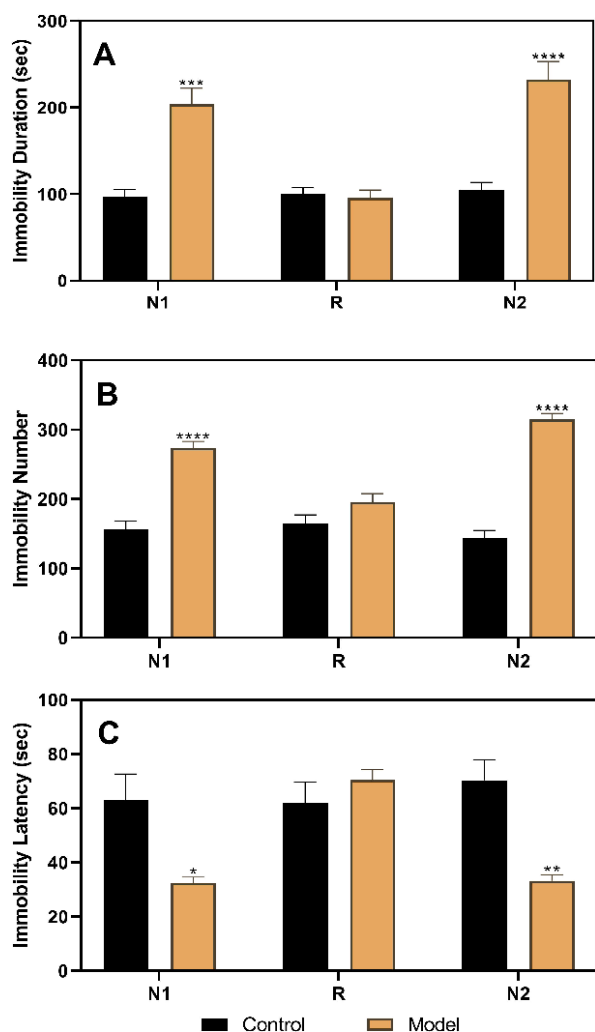


Figure 2. Results of the forced swimming test after model establishment and screening. (A) Results of immobility duration. (B) Results of immobility number. (C) Results of immobility latency. N1, the first test in the nonreceptive phase; N2, the second test in the non-receptive phase; R, the test in the receptive phase. * $p<0.05$, ** $p<0.01$, *** $p<0.001$, **** $p<0.0001$ ($n=8$ in the control group and $n=16$ in the model group; two-way ANOVA followed by post-hoc Sidak's multiple comparisons test).

We also administered drugs in the model animals with a normal estrous cycle (Figure 6); the results obtained were consistent with those obtained for the ovariectomized, hormone-primed model animals. The group factor had a significant effect on immobility duration ($F(2,21)=13.71$, $p=0.0002$), immobility number ($F(2,21)=5.184$, $p=0.0158$), and immobility latency ($F(2,21)=6.929$, $p=0.0049$). In the non-receptive phase, rats in the model group ($n=8$) had a longer immobility duration ($p=0.0056$), higher immobility number ($p=0.0439$), and shorter immobility latency ($p=0.0109$) than those in the control group ($n=8$). Further, rats in the model + fluoxetine ($n=8$) group had a shorter immobility duration, lower immobility number, and longer immobility latency than those in the model groups ($p=0.0001$, 0.0219 , and 0.0109 , respectively).

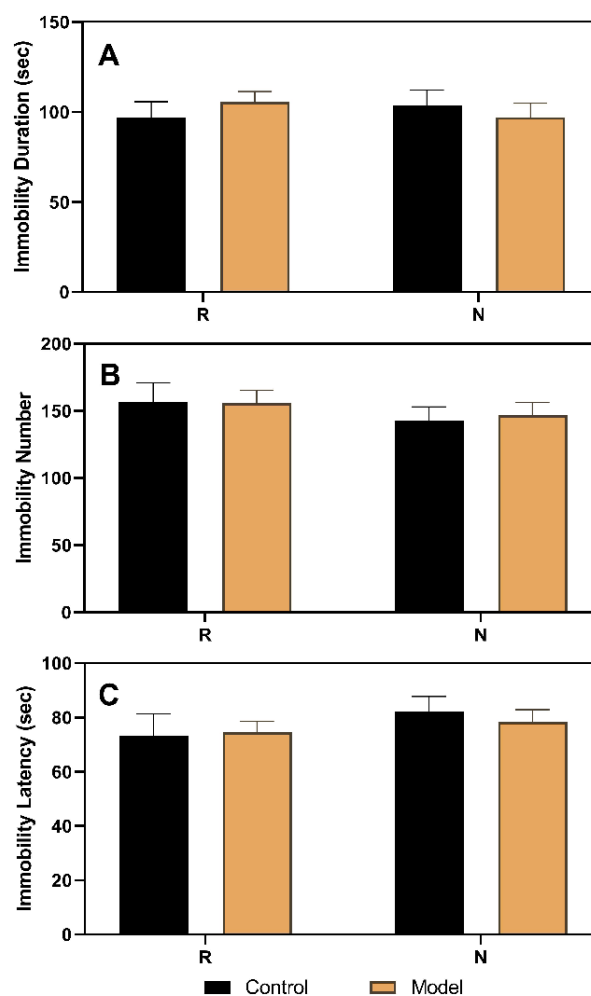


Figure 3. Results of the forced swimming test after ovariectomy. (A) Results of immobility duration. (B) Results of immobility number. (C) Results of immobility latency. N, the test in the non-receptive phase; R, the test in the receptive phase ($n=8$ in the control group and $n=16$ in the model group; two-way ANOVA followed by post-hoc Sidak's multiple comparisons test).

Changes in E₂ and neurotransmitters in rats with premenstrual depression

Rats in the premenstrual depression model group (n=8) had higher serum levels of E₂ (F(2,21)=8.044, *p*=0.0025; control vs model *p*=0.0074) and progesterone (F(2, 21)=9.162, *p*=0.0014; control vs model *p*=0.0032) than those in the control group (n=8) in the D1 (non-receptive) phase. These changes in serum E₂ and progesterone levels could be reversed by fluoxetine treatment (n=8) (*p*=0.0052 and 0.0040, respectively) (Figure 7). Moreover, the hippocampal levels of 5-HT, NE, GABA, and ALLO were detected by an enzyme-linked immunosorbent assay (ELISA). As shown in

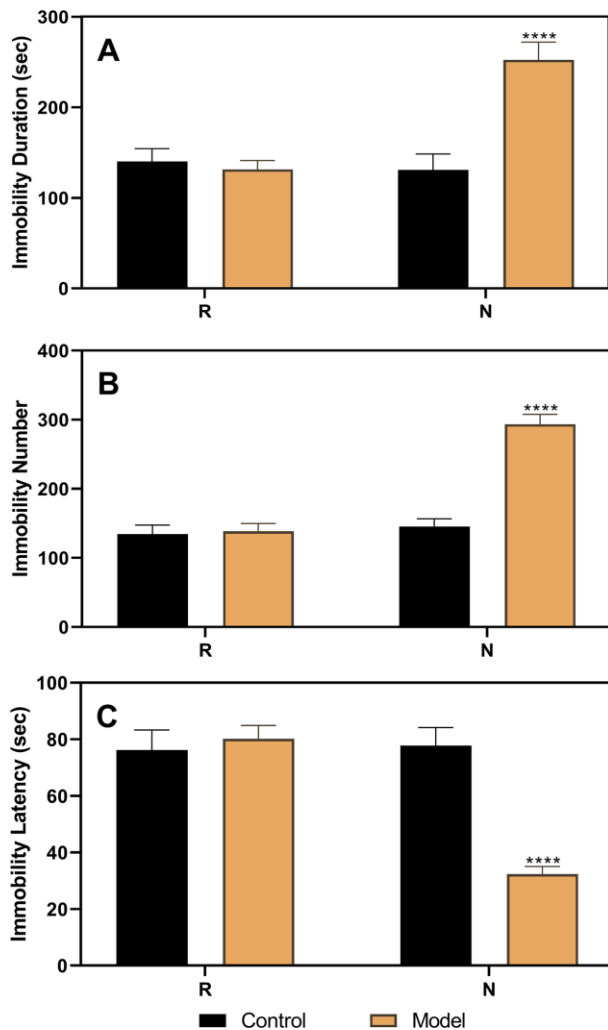


Figure 4. Results of the forced swimming test after the hormone priming regimen. (A) Results of immobility duration. (B) Results of immobility number. (C) Results of immobility latency. N, the test in the non-receptive phase; R, the test in the receptive phase. *****p*<0.0001 (n=8 in the control group and n=16 in the model group; two-way ANOVA followed by post-hoc Sidak's multiple comparisons test).

Figure 8, rats in the model group had lower levels of 5-HT (F(2,21)=10.80, *p*=0.0006; control vs model *p*=0.0039), NE (F(2,21)=10.19, *p*=0.0008; control vs model *p*=0.0021), GABA (F(2,21)=10.31, *p*=0.0008; control vs model *p*=0.0008), and ALLO (F(2, 21)=10.83, *p*=0.0006; control vs model *p*=0.0041) in the hippocampus than those in the control group. However, all of these changes were reversed in rats in the model + fluoxetine group (*p*=0.0009, 0.0024, 0.0095, and 0.0008, respectively).

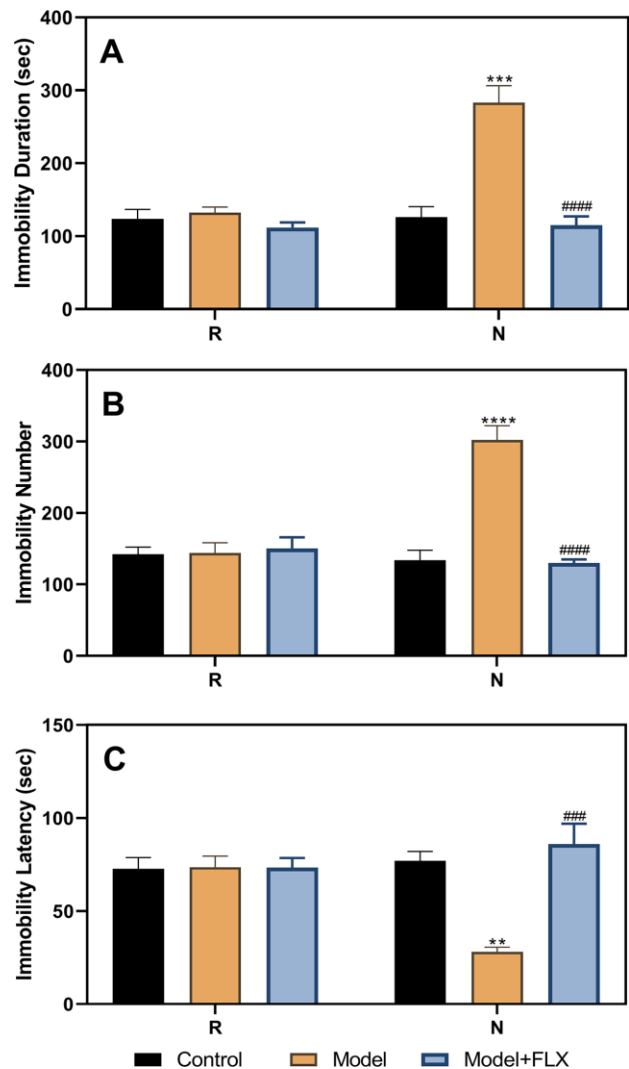


Figure 5. Results of the forced swimming test after fluoxetine treatment of the hormone-primed rats. (A) Results of immobility duration. (B) Results of immobility number. (C) Results of immobility latency. N, the test in the non-receptive phase; R, the test in the receptive phase. ***p*<0.01 compared to the control group, ****p*<0.001 compared to the control group, *****p*<0.0001 compared to the control group, ###*p*<0.001 compared to the model group, ####*p*<0.0001 compared to the model group (n=8 in each group; two-way ANOVA followed by post-hoc Sidak's multiple comparisons test).

Changes in *Gabra4* expression in rats with premenstrual depression

The expression levels of *Gabra4* mRNA and GABRA4 protein were determined by quantitative real-time polymerase chain reaction (RT-qPCR) and western blotting, respectively. As shown in Figure 9, relative to *Gapdh*, the mRNA expression of *Gabra4* ($F(2,21)=5.707$, $p=0.0105$) was increased in the model group ($p=0.0120$) but reversed to control levels in the model + fluoxetine group ($p=0.0445$). Similar changes

were observed for the protein expression level of GABRA4 (relative to β -actin; $F(2,21)=8.652$, $p=0.0018$; control vs model, $p=0.0448$; model vs model + fluoxetine, $p=0.0014$).

DISCUSSION

In this study, a rat model of premenstrual depression, which simulated the symptoms of depression in patients with PMDD, was successfully established based on recent evidence obtained through behavioral symptom assessments by FST and measurements of changes in E2, P, and neurochemical levels. The behavioral symptoms and changes in the levels of disease-related E2, P, neurotransmitters, and GABRA4 could be reversed by treatment with the anti-depressant fluoxetine, thereby verifying the successful establishment of the model in another aspect.

The FST-based rat model of premenstrual depression was established in rats with a regular estrous cycle. As shown in Figure 2, the depression-like behavior occurred in the non-receptive phase and disappeared in the receptive phase of the estrous cycle, consistent with the clinical finding that depression-like symptoms are related to the sharp decline of progesterone at the end of the luteal phase in humans [5, 7]. FST has been used as a method to establish PMS in previous studies [22, 23] and has been found to be reliable for simulating premenstrual depression-like behaviors. However, these studies rarely explored the neurochemical and central nervous system mechanisms underlying the depression-like symptoms, and information on the systematic evaluation of the models was lacking. Behavioral tests that can distinguish estrus cycle-dependent behavioral characteristics are necessary in PMS/PMDD-related research. However, not all behavioral tests meet this requirement; for example, the open field test and sucrose preference test cannot be used to identify behavioral differences in different stages of the estrus cycle [28]. In previous studies, limited behavioral paradigms were used to distinguish these estrus cycle-dependent behavioral changes, such as the resident-intruder test [20], FST [22, 23], and marble burying test [21, 28]. Undoubtedly, the ability of FST to identify these estrus cycle-dependent changes sufficiently enables the detection of PMDD and depression-like phenotypes, as FST is one of the recognized pharmacologic methods to screen for the efficacy of anti-depressive drugs [29]. In this study, the immobility duration, immobility number, and immobility latency were used as indicators of behavioral symptoms, which reflected the depression emotional response, “behavioral despair,” and met the basic requirements of establishing this animal model [30].

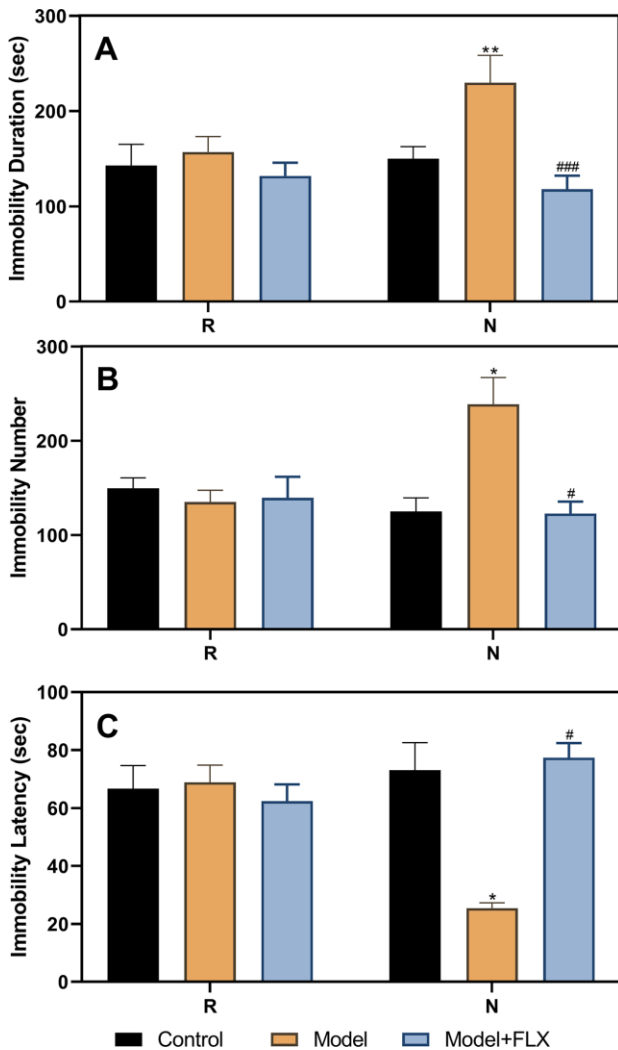


Figure 6. Results of the forced swimming test after fluoxetine treatment in rats with a normal estrous cycle. (A) Results of immobility duration. (B) Results of immobility number. (C) Results of immobility latency. N, the test in the non-receptive phase; R, the test in the receptive phase. * $p<0.05$ compared to control group, ** $p<0.01$ compared to the control group, # $p<0.05$ compared to the model group, ### $p<0.001$ compared to the model group ($n=8$ in each group; two-way ANOVA followed by post-hoc Sidak's multiple comparisons test).

To verify the reliability of this animal model of premenstrual depression, we performed a series of related trials. First, we observed that the symptoms of the model rats disappeared following ovariectomy and returned to normalcy after periodic estrus induction with a hormone priming regimen (Figures 3 and 4). These findings demonstrate the relationship between depressive symptoms and ovarian hormone, reflecting the pathogenesis of PMDD [8, 12, 31]. Moreover, in

model rats with a hormone-induced estrous cycle (Figure 5) or normal estrous cycle (Figure 6), the first-line anti-depressant fluoxetine could reverse the behavioral symptoms, thereby verifying the accuracy of the symptoms of depression established in this rat model. Although several methods, including progesterone withdrawal, have been widely used to establish animal models of PMS/PMDD [14, 15, 21, 32, 33], they cannot be used to establish a reliable PMDD

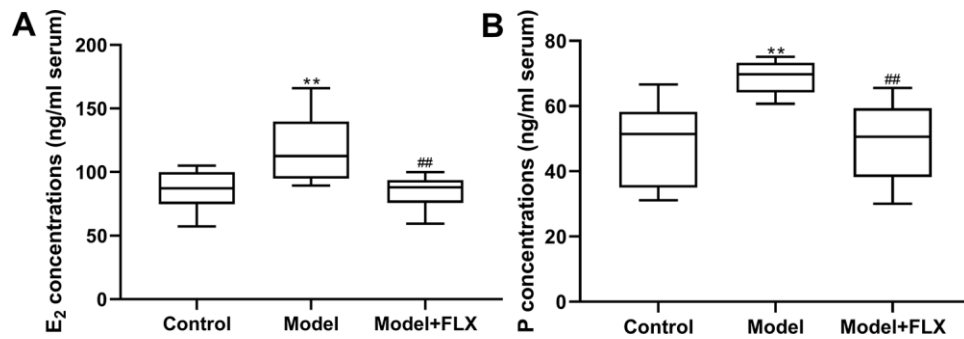


Figure 7. Estrogen (E2) and progesterone (P) levels in serum. (A) E2 levels in serum. (B) P levels in serum. FLX, fluoxetine. ** $p < 0.01$ compared to the control group, ## $p < 0.01$ compared to the model group (n=8 in each group; one-way ANOVA followed by post-hoc Tukey's multiple comparisons test).

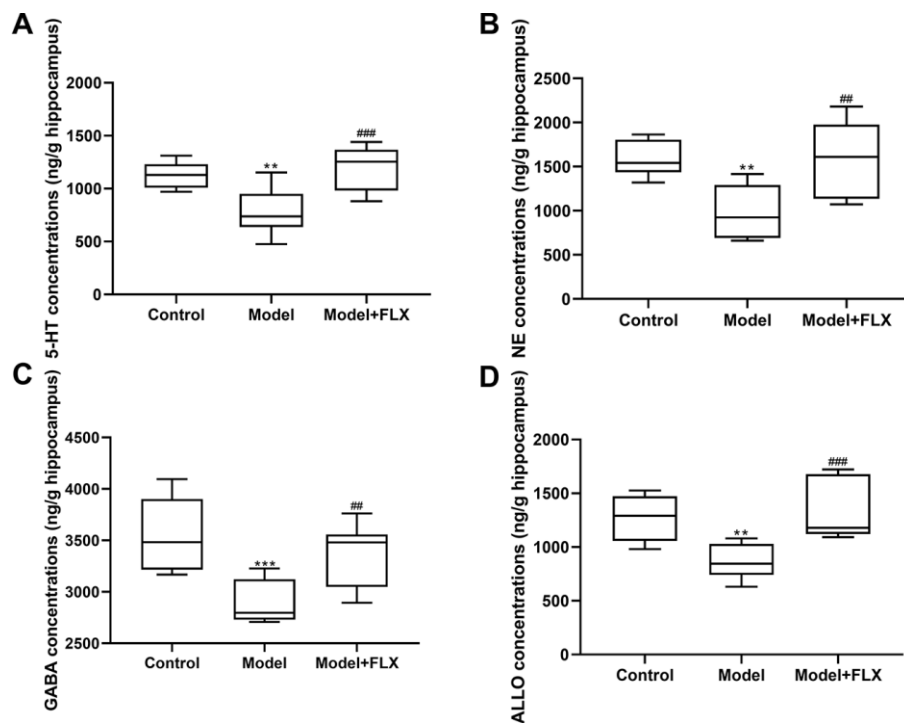


Figure 8. 5-hydroxytryptamine (5-HT), norepinephrine (NE), γ -aminobutyric acid (GABA), and allopregnanolone (ALLO) levels in the hippocampus. (A) 5-HT levels in the hippocampus. (B) NE levels in the hippocampus. (C) GABA levels in the hippocampus. (D) ALLO levels in the hippocampus. FLX, fluoxetine. ** $p < 0.01$ compared to the control group, *** $p < 0.001$ compared to the control group, ## $p < 0.01$ compared to the model group, ### $p < 0.001$ compared to the model group (n=8 in each group; one-way ANOVA followed by post-hoc Tukey's multiple comparisons test).

model that primarily manifests depression-like symptoms. Moreover, these models cannot determine the differences in symptoms between the non-receptive and receptive phases, thereby impeding further research on the improvement of the depression-like symptoms of PMDD. Clinically, in patients with PMS/PMDD, the depression-like symptoms occur in the premenstrual luteal phase and disappear in the follicular phase; thus, the evaluation of the analogous phenomenon in animals is key to the successful establishment of an animal model of PMS/PMDD.

We preliminarily investigated the mechanism underlying PMDD-related depression in relation to progesterone metabolites and neurotransmitters in the central nervous system and evaluated the validity of this model from a deeper perspective. Therefore, the levels of the related hormones (E_2 and progesterone in serum, and ALLO in the hippocampus), emotion-related neurotransmitters (5-HT, NE, and GABA in the hippocampus), and the expression of GABRA4, which is essential to the pathogenesis of PMS/PMDD [26], were determined (Figures 7–9). Further, 5-HT and NE play a key role in reconciling the functional neural circuits in the brain and regulating depression-like emotions [34, 35]; moreover, the anti-depressant fluoxetine is a 5-HT reuptake inhibitor. Hence, we considered that exploring the changes in the levels of these neurotransmitters in this premenstrual depression model is indispensable. Our results showed decreased 5-HT and NE levels in the model group, which was

reversed by fluoxetine treatment, indicating that levels of monoamine neurotransmitters were abnormally changed in PMDD-related depression. In previous studies, ALLO was regarded as an allosteric agent acting on the GABA A receptors, thereby reducing the GABA-mediated neuronal activities and functions [36]. GABRA4 also reportedly plays important roles in PMS/PMDD [24, 37, 38]. Therefore, we examined ALLO and GABA levels as well as GABRA4 expression levels in the emotion-related brain region, the hippocampus; the results showed decreased ALLO and GABA levels and increased GABRA4 expression levels in the model group, consistent with the viewpoint that GABA-mediated neuronal activity is inhibited in patients with depression [39]. Similarly, the changes in the related hormones, neurotransmitters, and GABRA4 expression were consistent with previous clinical findings. Therefore, these changes might constitute a potential mechanism underlying PMDD-related depression and could serve as reliable evidence for the validity of this animal model.

Several factors may have affected the experimental results obtained in this study. For example, exposure of the experimental rats to the same experimental environment might have led to familiarity, which is also called “habituation” [40, 41]. To avoid “habituation” bias, we used a normal control group for all behavioral experiments. However, the results of FST might have been affected. Further, some behavioral paradigms, such as the marble burying behavior and behaviors on

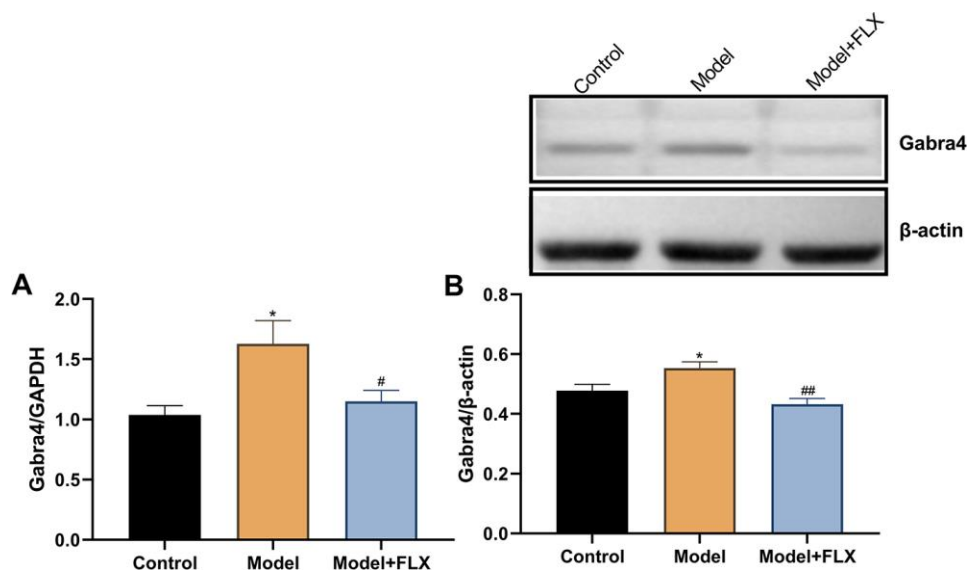


Figure 9. The mRNA and protein expression levels of GABRA4 in the hippocampus. (A) The mRNA expression levels of GABRA4 in the hippocampus. (B) The protein expression levels of GABRA4 in the hippocampus. FLX, fluoxetine. * $p < 0.05$ compared to the control group, # $p < 0.05$ compared to the control group, ## $p < 0.01$ compared to the model group ($n = 8$ in each group; one-way ANOVA followed by post-hoc Tukey’s multiple comparisons test).

an elevated plus maze, were reported to be estrous cycle-dependent. We repeated the elevated plus maze test several times (data not shown) but failed to prove that the results were estrous cycle-dependent. Therefore, such behavioral paradigms that could identify PMDD depression should be further studied. Lastly, evidence such as metabolic profiling of animal models as well as differences among genes, transcription levels, and protein levels should be provided in the future, which will help support whether these models are effective and reliable.

In conclusion, an animal model of premenstrual depression was evaluated from several aspects and established based on a series of evidence obtained through behavioral tests and biochemical analyses of the central nervous system. Considering the lack of animal models exhibiting depressive symptoms of PMDD, this study may support the further development of a standardized method for establishing a premenstrual depression model, which will facilitate investigations of PMS/PMDD pathogenesis and development of related therapies. As aforementioned, there are several behavioral paradigms that can be used to distinguish estrous cycle-dependent behavioral changes. However, it is unclear whether animal models of PMDD, screened using one behavioral paradigm, also exhibit other estrus cycle-dependent characteristics. To address this caveat, although preliminary attempts have been made by researchers [28], the evidence was not compelling enough. Furthermore, some researchers have shown that the behavior, drug responsiveness, neuronal activity, and related protein expression in the brain of rats or mice with normal estrus cycles seem to be significantly different between the late diestrus phase and the other phases [13, 18, 42, 43]; this observation raised the pertinent question: what is the relationship between the estrous cycle-dependent changes in rats or mice with normal estrus cycles mentioned above and the symptoms of PMDD? This issue requires further research. As the pathogenesis of PMDD is complex, our study only examined some common neurochemical indicators to illustrate the possible mechanism underlying premenstrual depression; thus, deeper mechanistic explorations, such as the evaluation of molecular signaling pathways or neuronal activity recordings in essential brain regions, are lacking herein. Therefore, we are planning a further study in the future to address these queries.

MATERIALS AND METHODS

Ethics statement

This investigation was conducted in accordance with the ethical standards and adhered to the tenets of the

Declaration of Helsinki, and according to the relevant national and international guidelines; the study was approved by the authors' institutional review board.

Animals

Female Wistar rats, weighing 135 ± 15 g, procured from the Vital River Laboratories (Beijing, China) were used in this study. The rats were housed at an ambient temperature of $21 \pm 1^\circ$ C and 55% relative humidity with a 12 h/12 h light/dark cycle with day-night reversal (lights on at 20:00; lights off at 8:00). All procedures were conducted under dim light (<25 lux) [44], and food and water were available *ad libitum*. The animals were allowed to acclimate for 1 week before the experiments. All efforts were made to minimize animal suffering.

Vaginal smear

After acclimation, vaginal smears were obtained from all rats to screen for those with a regular estrus cycle. The estrus cycle of rats includes four phases: proestrus/estrus (P/E, 1 day), metestrus (M, 1 day), diestrus 1 (D1, 1 day), and diestrus 2 (D2, 1 day) [45]. The various estrus cycle phases were confirmed by observing the morphology and proportion of keratinocytes, nuclear epithelial cells, and leucocytes via analysis of the vaginal smears under a microscope (Eclipse C1, Nikon, Japan) [46]. The smear examination was conducted at 09:00 every day for 9 days, and only rats with a regular estrus cycle were used for further experiments.

FST

This study used FST to establish the rat model of premenstrual depression and to evaluate the depression-like behavior [47, 48]. Rats were placed in plexiglass cylinders that were 20 cm in diameter containing water with a depth of 30 cm and temperature of 23° C for 10 min. The accumulated immobility duration, immobility number, and immobility latency (time from the start of the experiment to the first time of immobility) were calculated. The immobility state of animals was defined as no movement except those necessary to keep the nose above water for breathing [15]. The water was changed and the cylinders were cleaned carefully after each test. This test was performed between 12:00 and 16:00 [49].

Grouping

As shown in Figure 1, FST was performed on the 1st (D1 phase of the first estrus cycle), 11th (P/E phase of the second estrus cycle), and 21st (D1 phase of the third

estrus cycle) day of the experimental schedule. Rats were ordered from high to low according to the difference in duration between the immobility duration in the P/E phase and the immobility duration in the D1 phase. Rats in the top 30% of the orders were randomly stratified into the model group and model + fluoxetine group, and rats in the bottom 30% were assigned to the control group [28].

Hormone priming regimen

To verify the relationship between depression-like behavior and E₂ expression in the estrus cycle, rats were subjected to ovariectomy on the 25th day of the experimental schedule under anesthesia with 2% pentobarbital sodium (60 mg/kg) [50]. After recovery for 3 days, FST was performed during the D1 and P/E phases of the next estrus cycle (29th and 31st day, respectively). Next, exogenous E₂ was administered to induce periodic estrus according to the following regimen: rats were injected with 0.5 µg estradiol benzoate (McLean, China; 10042617) on the day of the D1 phase, 0.5 µg estradiol (McLean, China; 10006920) on the day of the D2 phase, and 0.5 mg progesterone (Sigma, United States; 101327062) on the day of the P/E phase [20]. These estrogens were dissolved in 0.1 mL saline and injected subcutaneously at 12:00 each day. For the second cycle of the hormone priming regimen, FST was performed on the 37th day (D1) and 39th day (P/E), respectively. The hormone priming regimen was administered until the end of the experiment in Part 1.

Drug treatment

In Part 1 of the experimental schedule, fluoxetine was administered to the rats in the model + fluoxetine group from the 41st to the 49th day. Dispersible tablets of fluoxetine (2.7 mg/kg/d; Lilly Company, China; H20050463) were dissolved in saline (2.7 mg/mL) and administered intragastrically at 08:00 each day. Rats in the control and model groups received the same administration with saline. After the drug treatment, FST was performed on the 49th (D1) and 51st (P/E) day, respectively. In Part 2 of the experimental schedule, the same drug regimen was administered after the grouping on the 25th day of the schedule for 9 days (to the 33rd day), and then FST was performed on the 33rd (D1) and 35th (P/E) day, respectively.

ELISA

After FST, the rats in Part 2 of the experiment were anesthetized with an overdose of 2% pentobarbital sodium and killed by cervical dislocation on the 37th day (D1 phase) of the schedule, and then 5 mL of

peripheral blood was collected and centrifuged at 3000 r/min (4 ° C) for 15 min. The plasma was separated and frozen at -80° C for further ELISA analysis of E₂ and progesterone levels. Simultaneously, the brains of the culled rats were removed, and the hippocampi were isolated on ice. Samples from the left hippocampi were used for ELISA analysis of GABA, 5-HT, NE, and ALLO, and those from the right hippocampi were used for western blot and PCR analyses of the GABRA4 subunit. The brain tissue for ELISA was homogenized in phosphate buffer, and then the supernatant was collected by centrifugation at 13,000 r/min (4 ° C) for 10 min for further analysis. Next, the levels of E₂ and progesterone in the serum and those of GABA, 5-HT, NE, and ALLO in the hippocampus were measured using ELISA kits (Cusabio, China) as previously described [49]. Thereafter, the optical density was determined using a microplate spectrophotometer at 450 nm.

Western blot analysis

The right hippocampus tissues were grounded in liquid nitrogen and homogenized in extraction buffer (Solarbio, China; R0010). After ultra-sonification for 10 min, the sample was centrifuged at 12,000 r/min (4 ° C) for 30 min, and then the supernatant was collected. Thereafter, protein levels were determined at 570 nm using a bicinchoninic acid protein assay kit (Solarbio, China; PC0020) according to the manufacturer's instructions. Samples (20 µL) were then loaded onto a 10% sodium dodecyl sulfate–polyacrylamide gel after boiling for 5 min and then separated by electrophoresis. The separated proteins were then electrophoretically transferred to a polyvinylidene difluoride membrane and blocked in 5% non-fat milk at 25° C for 1 h. The membrane was incubated with primary antibodies (1:200 rabbit polyclonal anti-GABRA4 antibody; OriGene, China; TA328815, and 1:800 mouse polyclonal anti-β-actin antibody; Sungene Biotech, China; KM9001) and then incubated with the secondary antibody (1:5000 horseradish peroxidase-conjugated Affinipure Goat Anti-Rabbit/mouse IgG; Proteintech, China; SA00001-1/2). The positive protein bands were visualized using an enhanced chemiluminescence reagent purchased from Solarbio (China; PE0010), and then the optical density value was calculated on the Image J Software. β-actin was used as the internal reference, and the GABRA4/β-actin ratio was used to evaluate the protein levels.

RT-qPCR analysis

Total RNA was extracted from hippocampal tissue using 1 mL Trizol reagent (Sigma, United States) and reversed-transcribed to cDNA using ReverTra Ace qPCR RT

Master Mix (TOYOBO, Japan; FSQ-201). RT-qPCR was performed using THUNDER BIRD SYBR qPCR Mix (TOYOBO, Japan; FSQ-101) with the Roche LightCycler 480 Real-Time PCR System. Data analysis was performed using the Light Cycle96 SW1.1 Software by the $2^{-\Delta\Delta Ct}$ method; the mRNA expression of glyceraldehyde-3-phosphate dehydrogenase (*Gapdh*) was used for normalization. The relative gene expression (*Gabra4/Gapdh*) was calculated and used for statistical analysis. The primers used for RT-qPCR were synthesized by Sangon Biotech (China) and the sequences were as follows: *Gabra4*-Forward primer: 5'-GAAA CCACTCCTAAGGCCCACT-3' *Gabra4*-Reversed primer: 5'- GCGATGCGGCAGACGAAA -3' *GAPDH*-Forward primer: 5'-GGCAAGTTCAACGGCACAGT-3'*GAPDH*-Reversed primer: 5'-TGGTGAAGACGCCA GTAGACTC-3'.

Statistical analysis

Data analysis was performed using GraphPad Prism 8.0.2, and the data are expressed as mean \pm standard error of the mean. For analysis of normality of distribution, the non-parametric Kolmogorov–Smirnov test was applied. Using the modified Layida method, exceptional data exceeding the mean $\pm 2\times$ the standard deviation were removed [51]. Differences in the FST results were compared using two-way ANOVA followed by post-hoc Sidak's multiple comparisons test. For the neurochemical and biochemical data, one-way ANOVA with post-hoc Tukey's multiple comparisons test was used. The level of significance was set at $p < 0.05$.

AUTHOR CONTRIBUTIONS

Mingqi Qiao, Wei Shi, and Sheng Wei designed the study, interpreted the data, performed the statistical analysis, and drafted the manuscript. Sheng Wei, Zifa Li, Xiwen Geng, and Minghui Hu fed and nursed animals in the facility. Xiwen Geng, Minghui Hu, and Kaiyong Xu contributed to the establishment of the rat model and its behavioral evaluation. Kaiyong Xu, Minghui Hu, and Hongyun Wu sacrificed animals, sampled tissues, disposed animal bodies, extracted proteins, and performed western blotting. Sheng Wei, Xiwen Geng, and Zifa Li sacrificed animals, sampled tissues, collected blood, and carried out ELISA and RT-qPCR experiments. Mingqi Qiao and Wei Shi directed the team, managed the facility, gave key advice, and provided the funds.

ACKNOWLEDGMENTS

We would like to thank EdiTar Bio-Tech Ltd. (Nanking, China) for English language editing.

CONFLICTS OF INTEREST

No author has any potential conflicts of interest.

FUNDING

The study was supported by the National Natural Science Foundation of China (No. 81974553), the National Science and Technology Major Projects for “Major New Drugs Innovation and Development” (No. 2017ZX09301064001), Taishan Scholar Project of Shandong Province (tsqn201909185), the Natural Science Foundation of Shandong Province (No. ZR2019MH053), and the Youth Innovation Team of Shandong Provincial Department of Education (No. 2019KJK002).

REFERENCES

1. Yonkers KA, O'Brien PM, Eriksson E. Premenstrual syndrome. *Lancet*. 2008; 371:1200–10. [https://doi.org/10.1016/S0140-6736\(08\)60527-9](https://doi.org/10.1016/S0140-6736(08)60527-9) PMID:[18395582](https://pubmed.ncbi.nlm.nih.gov/18395582/)
2. Eisenlohr-Moul TA, Kaiser G, Weise C, Schmalenberger KM, Kiesner J, Ditzen B, Kleinstäuber M. Are there temporal subtypes of premenstrual dysphoric disorder?: using group-based trajectory modeling to identify individual differences in symptom change. *Psychol Med*. 2020; 50:964–72. <https://doi.org/10.1017/S0033291719000849> PMID:[31010447](https://pubmed.ncbi.nlm.nih.gov/31010447/)
3. Yakir M, Klein-Laansma CT, Kreitler S, Brzezinski A, Oberbaum M, Vithoulkas G, Bentwich Z. A placebo-controlled double-blind randomized trial with individualized homeopathic treatment using a symptom cluster approach in women with premenstrual syndrome. *Homeopathy*. 2019; 108:256–69. <https://doi.org/10.1055/s-0039-1691834> PMID:[31434111](https://pubmed.ncbi.nlm.nih.gov/31434111/)
4. Bäckström T, Bixo M, Johansson M, Nyberg S, Ossewaarde L, Ragagnin G, Savic I, Strömberg J, Timby E, van Broekhoven F, van Wingen G. Allopregnanolone and mood disorders. *Prog Neurobiol*. 2014; 113:88–94. <https://doi.org/10.1016/j.pneurobio.2013.07.005> PMID:[23978486](https://pubmed.ncbi.nlm.nih.gov/23978486/)
5. Lovick TA, Guapo VG, Anselmo-Franci JA, Loureiro CM, Faleiros MC, Del Ben CM, Brandão ML. A specific profile of luteal phase progesterone is associated with the development of premenstrual symptoms. *Psychoneuroendocrinology*. 2017; 75:83–90. <https://doi.org/10.1016/j.psyneuen.2016.10.024> PMID:[27810707](https://pubmed.ncbi.nlm.nih.gov/27810707/)
6. Bakay K, Ulubasoglu H, Atan T, Alacam H, Guven D, Batioglu S. The effect of physical activity on the levels

- of the hormones, serotonin and melatonin in premenstrual syndrome. *Clin Exp Obstet Gynecol*. 2018; 45:425–27.
7. Baker LJ, O'Brien PM. Potential strategies to avoid progestogen-induced premenstrual disorders. *Menopause Int*. 2012; 18:73–76.
<https://doi.org/10.1258/mi.2012.012016>
PMID:22611226
 8. Schmelzer K, Ditzen B, Weise C, Andersson G, Hiller W, Kleinstäuber M. Clinical profiles of premenstrual experiences among women having premenstrual syndrome (PMS): affective changes predominate and relate to social and occupational functioning. *Health Care Women Int*. 2015; 36:1104–23.
<https://doi.org/10.1080/07399332.2014.954701>
PMID:25186770
 9. Schmidt PJ, Martinez PE, Nieman LK, Koziol DE, Thompson KD, Schenkel L, Wakim PG, Rubinow DR. Premenstrual dysphoric disorder symptoms following ovarian suppression: triggered by change in ovarian steroid levels but not continuous stable levels. *Am J Psychiatry*. 2017; 174:980–89.
<https://doi.org/10.1176/appi.ajp.2017.16101113>
PMID:28427285
 10. Lee EE, Nieman LK, Martinez PE, Harsh VL, Rubinow DR, Schmidt PJ. ACTH and cortisol response to dex/CRH testing in women with and without premenstrual dysphoria during GnRH agonist-induced hypogonadism and ovarian steroid replacement. *J Clin Endocrinol Metab*. 2012; 97:1887–96.
<https://doi.org/10.1210/jc.2011-3451> PMID:22466349
 11. Segebladh B, Borgström A, Nyberg S, Bixo M, Sundström-Poromaa I. Evaluation of different add-back estradiol and progesterone treatments to gonadotropin-releasing hormone agonist treatment in patients with premenstrual dysphoric disorder. *Am J Obstet Gynecol*. 2009; 201:139.e1–8.
<https://doi.org/10.1016/j.ajog.2009.03.016>
PMID:19398092
 12. Andréen L, Sundström-Poromaa I, Bixo M, Andersson A, Nyberg S, Bäckström T. Relationship between allopregnanolone and negative mood in postmenopausal women taking sequential hormone replacement therapy with vaginal progesterone. *Psychoneuroendocrinology*. 2005; 30:212–24.
<https://doi.org/10.1016/j.psyneuen.2004.07.003>
PMID:15471618
 13. Machado Figueiredo R, de Carvalho MC, Brandão ML, Lovick TA. Short-term, low-dose fluoxetine prevents oestrous cycle-linked increase in anxiety-like behaviour in female rats. *J Psychopharmacol*. 2019; 33:548–57.
<https://doi.org/10.1177/0269881119841833>
PMID:31012390
 14. Gulinello M, Gong QH, Smith SS. Progesterone withdrawal increases the anxiolytic actions of gaboxadol: role of alpha4betadelta GABA(A) receptors. *Neuroreport*. 2003; 14:43–46.
<https://doi.org/10.1097/00001756-200301200-00008>
PMID:12544828
 15. Li Y, Pehrson AL, Budac DP, Sánchez C, Gulinello M. A rodent model of premenstrual dysphoria: progesterone withdrawal induces depression-like behavior that is differentially sensitive to classes of antidepressants. *Behav Brain Res*. 2012; 234:238–47.
<https://doi.org/10.1016/j.bbr.2012.06.034>
PMID:22789402
 16. Li Y, Raaby KF, Sánchez C, Gulinello M. Serotonergic receptor mechanisms underlying antidepressant-like action in the progesterone withdrawal model of hormonally induced depression in rats. *Behav Brain Res*. 2013; 256:520–28.
<https://doi.org/10.1016/j.bbr.2013.09.002>
PMID:24016840
 17. Schmidt PJ, Nieman LK, Danaceau MA, Adams LF, Rubinow DR. Differential behavioral effects of gonadal steroids in women with and in those without premenstrual syndrome. *N Engl J Med*. 1998; 338:209–16.
<https://doi.org/10.1056/NEJM199801223380401>
PMID:9435325
 18. Devall AJ, Santos JM, Fry JP, Honour JW, Brandão ML, Lovick TA. Elevation of brain allopregnanolone rather than 5-HT release by short term, low dose fluoxetine treatment prevents the estrous cycle-linked increase in stress sensitivity in female rats. *Eur Neuropsychopharmacol*. 2015; 25:113–23.
<https://doi.org/10.1016/j.euroneuro.2014.11.017>
PMID:25498416
 19. Helmerhorst FM, Lopez LM, Kaptein AA. Premenstrual syndrome. *Lancet*. 2008; 372:446.
[https://doi.org/10.1016/S0140-6736\(08\)61191-5](https://doi.org/10.1016/S0140-6736(08)61191-5)
PMID:18692709
 20. Ho HP, Olsson M, Westberg L, Melke J, Eriksson E. The serotonin reuptake inhibitor fluoxetine reduces sex steroid-related aggression in female rats: an animal model of premenstrual irritability? *Neuropsychopharmacology*. 2001; 24:502–10.
[https://doi.org/10.1016/S0893-133X\(00\)00219-0](https://doi.org/10.1016/S0893-133X(00)00219-0)
PMID:11282250
 21. Schneider T, Popik P. An animal model of premenstrual dysphoric disorder sensitive to antidepressants. *Curr Protoc Neurosci*. 2009; 46:9.31.1–10.
<https://doi.org/10.1002/0471142301.ns0931s46>
PMID:19170024

22. Marván ML, Santana S, Chávez Chávez L, Bertran M. Inescapable shocks accentuate fluctuations of forced swimming immobility in different phases of the rat estrous cycle. *Arch Med Res.* 1997; 28:369–72. PMID:[9291632](https://pubmed.ncbi.nlm.nih.gov/9291632/)
23. Marvan ML, Chavez-Chavez L, Santana S. Clomipramine modifies fluctuations of forced swimming immobility in different phases of the rat estrous cycle. *Arch Med Res.* 1996; 27:83–86. PMID:[8867373](https://pubmed.ncbi.nlm.nih.gov/8867373/)
24. Sabaliauskas N, Shen H, Molla J, Gong QH, Kuver A, Aoki C, Smith SS. Neurosteroid effects at $\alpha 4\beta\delta$ GABAA receptors alter spatial learning and synaptic plasticity in CA1 hippocampus across the estrous cycle of the mouse. *Brain Res.* 2015; 1621:170–86. <https://doi.org/10.1016/j.brainres.2014.12.026> PMID:[25542386](https://pubmed.ncbi.nlm.nih.gov/25542386/)
25. Barth AM, Ferando I, Mody I. Ovarian cycle-linked plasticity of δ -GABAA receptor subunits in hippocampal interneurons affects γ oscillations in vivo. *Front Cell Neurosci.* 2014; 8:222. <https://doi.org/10.3389/fncel.2014.00222> PMID:[25157218](https://pubmed.ncbi.nlm.nih.gov/25157218/)
26. Maguire JL, Stell BM, Rafizadeh M, Mody I. Ovarian cycle-linked changes in GABA(A) receptors mediating tonic inhibition alter seizure susceptibility and anxiety. *Nat Neurosci.* 2005; 8:797–804. <https://doi.org/10.1038/nn1469> PMID:[15895085](https://pubmed.ncbi.nlm.nih.gov/15895085/)
27. Lovick TA, Griffiths JL, Dunn SM, Martin IL. Changes in GABA(A) receptor subunit expression in the midbrain during the oestrous cycle in wistar rats. *Neuroscience.* 2005; 131:397–405. <https://doi.org/10.1016/j.neuroscience.2004.11.010> PMID:[15708482](https://pubmed.ncbi.nlm.nih.gov/15708482/)
28. Schneider T, Popik P. Increased depressive-like traits in an animal model of premenstrual irritability. *Horm Behav.* 2007; 51:142–48. <https://doi.org/10.1016/j.yhbeh.2006.09.006> PMID:[17049520](https://pubmed.ncbi.nlm.nih.gov/17049520/)
29. Holmes PV. Rodent models of depression: reexamining validity without anthropomorphic inference. *Crit Rev Neurobiol.* 2003; 15:143–74. <https://doi.org/10.1615/critrevneurobiol.v15.i2.30> PMID:[14977368](https://pubmed.ncbi.nlm.nih.gov/14977368/)
30. D'Aquila PS, Panin F, Serra G. Long-term imipramine withdrawal induces a depressive-like behaviour in the forced swimming test. *Eur J Pharmacol.* 2004; 492:61–63. <https://doi.org/10.1016/j.ejphar.2004.04.008> PMID:[15145707](https://pubmed.ncbi.nlm.nih.gov/15145707/)
31. Freeman EW. Luteal phase administration of agents for the treatment of premenstrual dysphoric disorder. *CNS Drugs.* 2004; 18:453–68. <https://doi.org/10.2165/00023210-200418070-00004> PMID:[15139800](https://pubmed.ncbi.nlm.nih.gov/15139800/)
32. Gulinello M, Gong QH, Smith SS. Progesterone withdrawal increases the $\alpha 4$ subunit of the GABA(A) receptor in male rats in association with anxiety and altered pharmacology - a comparison with female rats. *Neuropharmacology.* 2002; 43:701–14. [https://doi.org/10.1016/s0028-3908\(02\)00171-5](https://doi.org/10.1016/s0028-3908(02)00171-5) PMID:[12367616](https://pubmed.ncbi.nlm.nih.gov/12367616/)
33. Bellofiore N, Cousins F, Temple-Smith P, Evans J. Altered exploratory behaviour and increased food intake in the spiny mouse before menstruation: a unique pre-clinical model for examining premenstrual syndrome. *Hum Reprod.* 2019; 34:308–22. <https://doi.org/10.1093/humrep/dey360> PMID:[30561655](https://pubmed.ncbi.nlm.nih.gov/30561655/)
34. Brocardo PS, Budni J, Kaster MP, Santos AR, Rodrigues AL. Folic acid administration produces an antidepressant-like effect in mice: evidence for the involvement of the serotonergic and noradrenergic systems. *Neuropharmacology.* 2008; 54:464–73. <https://doi.org/10.1016/j.neuropharm.2007.10.016> PMID:[18078962](https://pubmed.ncbi.nlm.nih.gov/18078962/)
35. Ressler KJ, Nemeroff CB. Role of serotonergic and noradrenergic systems in the pathophysiology of depression and anxiety disorders. *Depress Anxiety.* 2000 (Suppl 1); 12:2–19. [https://doi.org/10.1002/1520-6394\(2000\)12:1+<2::AID-DA2>3.0.CO;2-4](https://doi.org/10.1002/1520-6394(2000)12:1+<2::AID-DA2>3.0.CO;2-4) PMID:[11098410](https://pubmed.ncbi.nlm.nih.gov/11098410/)
36. Smith SS. The influence of stress at puberty on mood and learning: role of the $\alpha 4\beta\delta$ GABAA receptor. *Neuroscience.* 2013; 249:192–213. <https://doi.org/10.1016/j.neuroscience.2012.09.065> PMID:[23079628](https://pubmed.ncbi.nlm.nih.gov/23079628/)
37. Griffiths JL, Lovick TA. GABAergic neurones in the rat periaqueductal grey matter express $\alpha 4$, $\beta 1$ and δ GABAA receptor subunits: plasticity of expression during the estrous cycle. *Neuroscience.* 2005; 136:457–66. <https://doi.org/10.1016/j.neuroscience.2005.08.013> PMID:[16226387](https://pubmed.ncbi.nlm.nih.gov/16226387/)
38. Smith SS, Gong QH, Hsu FC, Markowitz RS, French-Mullen JM, Li X. GABA(A) receptor $\alpha 4$ subunit suppression prevents withdrawal properties of an endogenous steroid. *Nature.* 1998; 392:926–30. <https://doi.org/10.1038/31948> PMID:[9582073](https://pubmed.ncbi.nlm.nih.gov/9582073/)
39. Gao SF, Klomp A, Wu JL, Swaab DF, Bao AM. Reduced GAD(65/67) immunoreactivity in the hypothalamic paraventricular nucleus in depression: a postmortem study. *J Affect Disord.* 2013; 149:422–25.

<https://doi.org/10.1016/j.jad.2012.12.003>

PMID:[23312397](https://pubmed.ncbi.nlm.nih.gov/23312397/)

40. Rygula R, Abumaria N, Flügge G, Fuchs E, Rüter E, Havemann-Reinecke U. Anhedonia and motivational deficits in rats: impact of chronic social stress. *Behav Brain Res.* 2005; 162:127–34.
<https://doi.org/10.1016/j.bbr.2005.03.009>
PMID:[15922073](https://pubmed.ncbi.nlm.nih.gov/15922073/)
41. Wei S, Zhang HY, Gao J, Xue L, Sun P, Chao YB, Xue G, Qiao MQ. Impact of social isolation and resident intruder stress on aggressive behavior in the male rat. *Neural Regen Res.* 2010; 5:1175–79.
42. Soares-Rachetti Vde P, de Sousa Pinto ÁA, Santos RO, André E, Gavioli EC, Lovick T. Short term, low dose fluoxetine blocks estrous cycle-linked changes in responsiveness to diazepam in female rats. *J Psychopharmacol.* 2016; 30:1062–68.
<https://doi.org/10.1177/0269881116636106>
PMID:[26956868](https://pubmed.ncbi.nlm.nih.gov/26956868/)
43. Maguire J, Mody I. GABA(A)R plasticity during pregnancy: relevance to postpartum depression. *Neuron.* 2008; 59:207–13.
<https://doi.org/10.1016/j.neuron.2008.06.019>
PMID:[18667149](https://pubmed.ncbi.nlm.nih.gov/18667149/)
44. Wei S, Sun P, Guo Y, Chen J, Wang J, Song C, Li Z, Xue L, Qiao M. Gene expression in the hippocampus in a rat model of premenstrual dysphoric disorder after treatment with baixiangdan capsules. *Front Psychol.* 2018; 9:2065.
<https://doi.org/10.3389/fpsyg.2018.02065>
PMID:[30483168](https://pubmed.ncbi.nlm.nih.gov/30483168/)
45. Mandl AM. The Phases of the Oestrous Cycle in the Adult White Rat. *J Exp Biol.* 1951; 28:576–84.
46. Marcondes FK, Bianchi FJ, Tanno AP. Determination of the estrous cycle phases of rats: some helpful considerations. *Braz J Biol.* 2002; 62:609–14.
47. Lino-de-Oliveira C, De Lima TC, de Pádua Carobrez A. Structure of the rat behaviour in the forced swimming test. *Behav Brain Res.* 2005; 158:243–50.
<https://doi.org/10.1016/j.bbr.2004.09.004>
PMID:[12659010](https://pubmed.ncbi.nlm.nih.gov/12659010/)
48. Porsolt RD, Anton G, Blavet N, Jalfre M. Behavioural despair in rats: a new model sensitive to antidepressant treatments. *Eur J Pharmacol.* 1978; 47:379–91.
[https://doi.org/10.1016/0014-2999\(78\)90118-8](https://doi.org/10.1016/0014-2999(78)90118-8)
PMID:[204499](https://pubmed.ncbi.nlm.nih.gov/204499/)
49. Wei S, Li Z, Ren M, Wang J, Gao J, Guo Y, Xu K, Li F, Zhu D, Zhang H, Lv R, Qiao M. Social defeat stress before pregnancy induces depressive-like behaviours and cognitive deficits in adult male offspring: correlation with neurobiological changes. *BMC Neurosci.* 2018; 19:61.
<https://doi.org/10.1186/s12868-018-0463-7>
PMID:[30326843](https://pubmed.ncbi.nlm.nih.gov/30326843/)
50. Zhang H, Geng X, Li Z, Li Y, Xu K, Wu H, Xie J, Sun P, Wei S, Qiao M. Paeonol at certain doses alleviates aggressive and anxiety-like behaviours in two premenstrual dysphoric disorder rat models. *Front Psychiatry.* 2020; 11:295.
<https://doi.org/10.3389/fpsyg.2020.00295>
PMID:[32351418](https://pubmed.ncbi.nlm.nih.gov/32351418/)
51. Zaidan H, Gaisler-Salomon I. Prereproductive stress in adolescent female rats affects behavior and corticosterone levels in second-generation offspring. *Psychoneuroendocrinology.* 2015; 58:120–29.
<https://doi.org/10.1016/j.psyneuen.2015.04.013>
PMID:[25973567](https://pubmed.ncbi.nlm.nih.gov/25973567/)