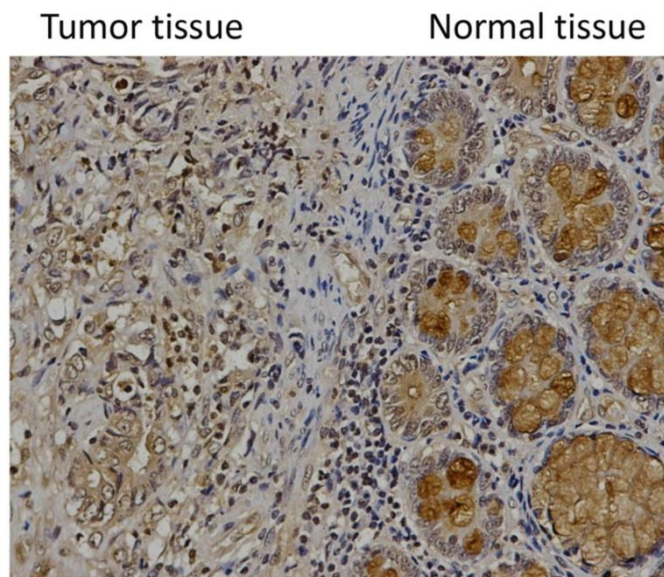
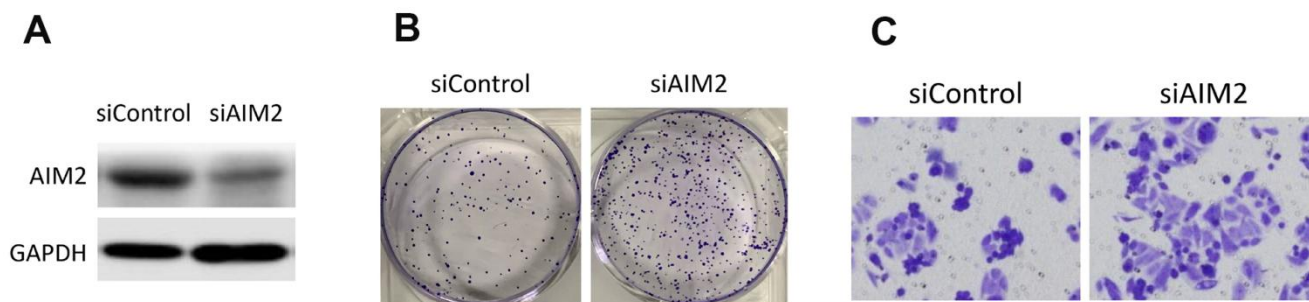


SUPPLEMENTARY FIGURES



Supplementary Figure 1. IHC staining of AIM2 in CRC tumor tissues and surrounding normal tissues from the same slide.



Supplementary Figure 2. AIM2 plays anti-carcinogenic roles in CRC. (A) Western blots of AIM2 protein in SW620 cells transfected with control-siRNA (siControl) or siRNA against AIM2 (siAIM2). GAPDH as a loading control. (B) Colony formation assays to test proliferation ability of SW620 cells transfected with siControl or siAIM2. (C) Transwell assays to test migration ability of SW620 cells transfected with siControl or siAIM2.