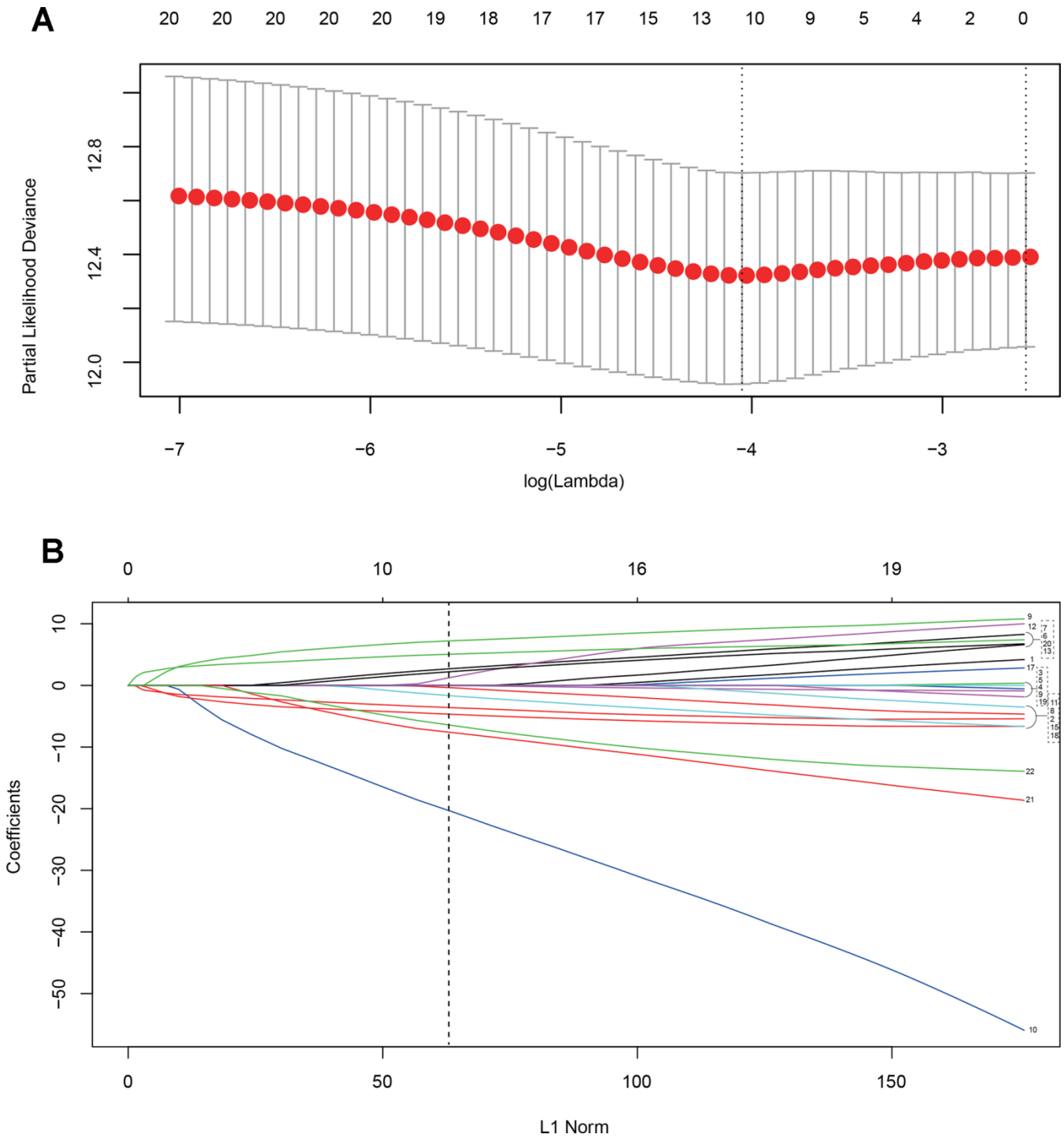
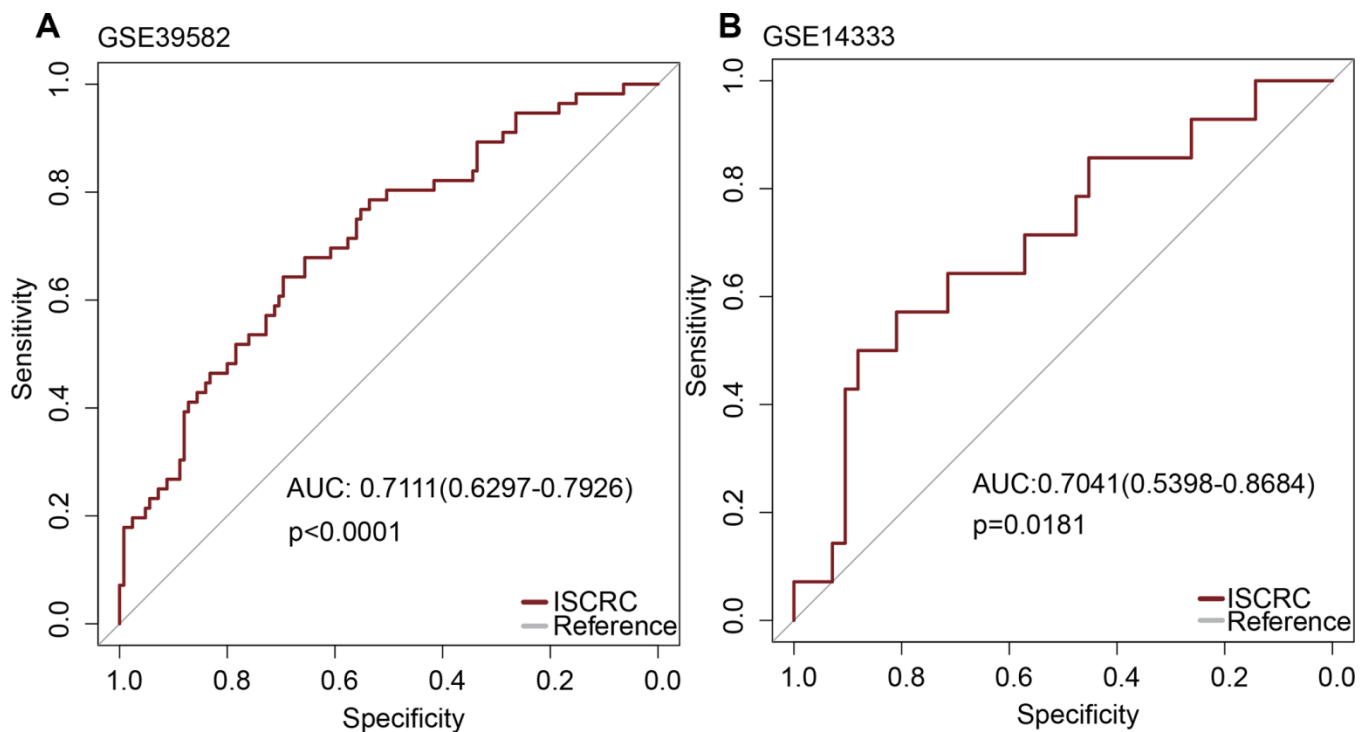


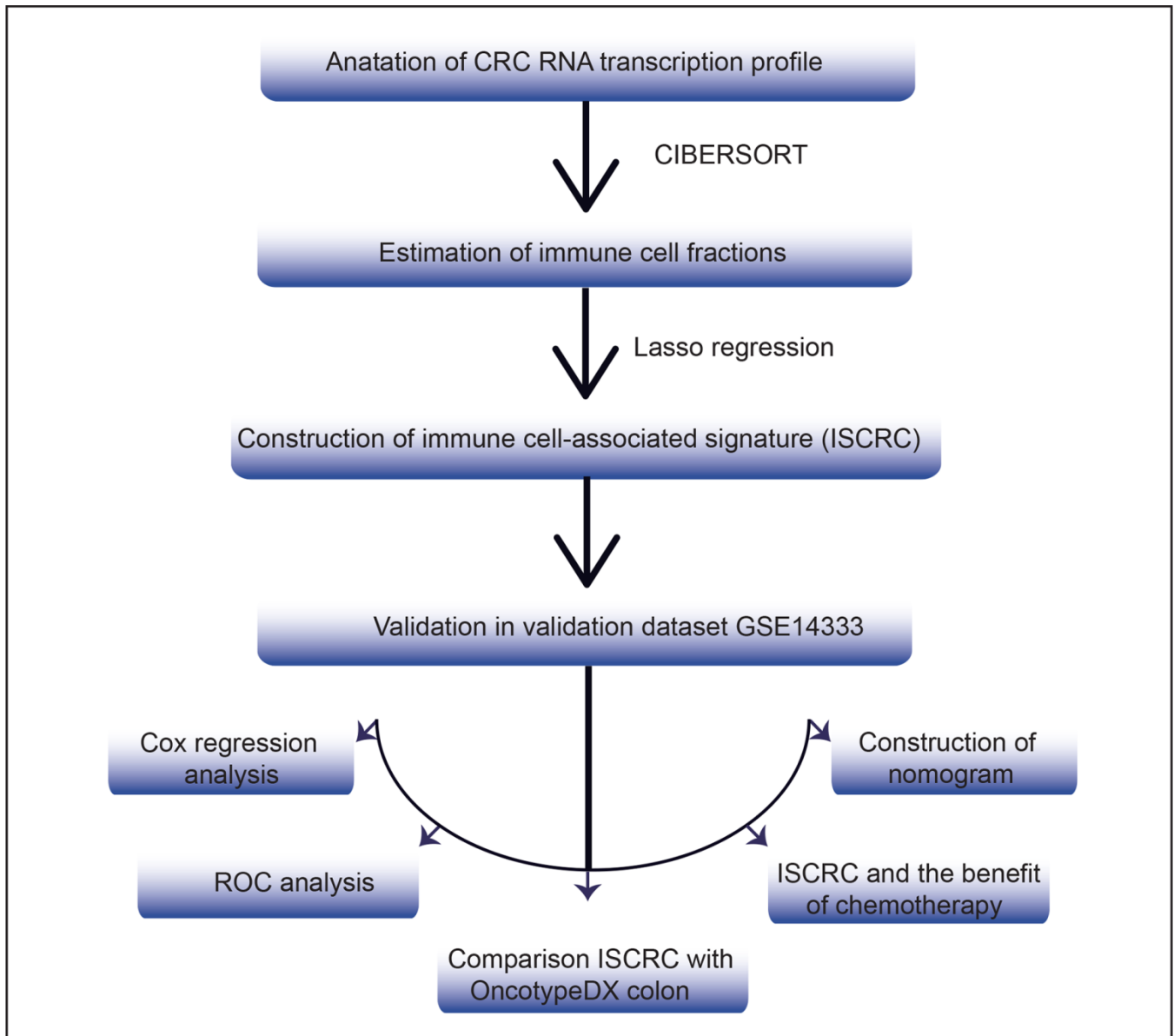
SUPPLEMENTARY FIGURES



Supplementary Figure 1. Cross-validation for tuning parameter selection in the LASSO model. The point plot of partial likelihood deviance versus log (lambda). The red dotted line represents ten-fold cross-validation curve. The solid vertical lines are partial likelihood deviance standard error (SE). The dotted vertical lines are drawn at the optimal values by minimum criteria and 1-SE criteria (A) The trajectory of each candidate immune cell's coefficient in CRC was observed in the LASSO coefficient profiles with the changing of the lambda (B).



Supplementary Figure 2. Receiver operating characteristic (ROC) analysis of the ISCRC model. The sensitivity and specificity of the recurrence prediction in GSE39582 (N=253) (A) and GSE14333 (N=86) (B).



Supplementary Figure 3. The workflow of this study. The orders of analyses to generate the ISCRC model and assess its prognostic value in stage II CRC, etc.