

Association of adult lung function with accelerated biological aging

Faisal I. Rezwan^{1,*}, Medea Imboden^{2,3,*}, Andre F.S. Amaral^{4,5,*}, Matthias Wielscher^{6,*}, Ayoung Jeong^{2,3}, Kai Triebner⁷, Francisco Gómez Real^{7,8}, Marjo-Riitta Jarvelin^{4,6,#}, Deborah Jarvis^{4,5,#}, Nicole M. Probst-Hensch^{2,3,#}, John W. Holloway^{1,#}

¹Human Development and Health, Faculty of Medicine, University of Southampton, Southampton, United Kingdom

²Chronic Disease Epidemiology Unit, Department of Epidemiology and Public Health, Swiss Tropical and Public Health Institute, Basel, Switzerland

³University of Basel, Basel, Switzerland

⁴Population Health and Occupational Disease, NHLI, Imperial College London, London, United Kingdom

⁵MRC-PHE Centre for Environment and Health, Imperial College London, London, United Kingdom

⁶Department of Epidemiology and Biostatistics, MRC-PHE Centre for Environment and Health, School of Public Health, Imperial College London, London, United Kingdom

⁷Department of Clinical Science, University of Bergen, Bergen, Norway

⁸Department of Gynecology and Obstetrics, University of Bergen, Bergen, Norway

*Co-first authors

#Co-senior authors

Correspondence to: Faisal I. Rezwan, John W. Holloway; **email:** F.Rezwan@soton.ac.uk, J.W.Holloway@soton.ac.uk

Keywords: respiratory health, lung function, epigenetic clock, DNA methylation, age acceleration

Received: July 8, 2019

Accepted: December 23, 2019

Published: January 11, 2020

Copyright: Rezwan et al. This is an open-access article distributed under the terms of the Creative Commons Attribution License (CC BY 3.0), which permits unrestricted use, distribution, and reproduction in any medium, provided the original author and source are credited.

ABSTRACT

Lung function, strongly associated with morbidity and mortality, decreases with age. This study examines whether poor adult lung function is associated with age accelerations (AAs). DNA methylation (DNAm) based AAs, lifespan predictors (GrimAge and plasminogen activator inhibitor 1-PAI1) and their related age-adjusted measures were estimated from peripheral blood at two time points (8-to-11 years apart) in adults from two cohorts: SAPALDIA (n=987) and ECRHS (n=509). Within each cohort and stratified by gender (except for estimators from GrimAge and PAI1), AAs were used as predictors in multivariate linear regression with cross-sectional lung function parameters, and in covariate-adjusted mixed linear regression with longitudinal change in lung function and meta-analysed.

AAs were found cross-sectionally associated with lower mean FEV1 (Forced Expiratory Volume in one second) (AA-residuals:P-value= 4×10^{-4} ; Intrinsic Epigenetic AA:P-value= 2×10^{-4}) in females at the follow-up time point only, and the same trend was observed for FVC (Forced Vital Capacity). Both lifespan and plasma level predictors were observed strongly associated with lung function decline and the decline was stronger in the follow-up time points (strongest association between FEV1 and DNAmAge GrimAge:P-value= 1.25×10^{-17}).

This study suggests that DNAm based lifespan and plasma level predictors can be utilised as important factors to assess lung health in adults.

INTRODUCTION

Lung function is an important predictor of mortality [1] even in non-smokers, with low adult lung function

being a consequence of poor growth *in utero* and/or childhood and/or excessive decline in adult life [2]. Lung function decline in adulthood occurs because of anatomical, physiological and immunological age-

related changes in the lung [3], with the rate of change influenced by both genetics [4] and environmental exposures including smoking, occupational exposures and air pollution [5–7]. However, the exact mechanisms contributing to lung function decline are not fully understood.

Clinicians and members of the public have long noted that some individuals have considerable mismatch between their chronological age and their apparent biological age. There are now methods to formally quantify biological age using biospecimens and one of the most widely reported and examined is ‘epigenetic aging’ based on peripheral blood DNA methylation (DNAm).

There are several methods available to estimate epigenetic aging [8–12] and both the Horvath and Hannum methods for epigenetic age estimation (DNAmAge) have shown high accuracy, with an average correlation > 0.90 between chronological and epigenetic age [10]. However, these correlations are heterogeneous with the Horvath and Hannum methods demonstrating a median absolute difference between DNAmAge and chronological age of 3.5 [10] and 4.9 years [9], respectively. The difference between epigenetic age and chronological age is known as age acceleration (AA) and both epigenetic age measures and AAs are highly correlated with the chronological age. Therefore, residuals from regression between epigenetic and chronological ages (AA_{res}), using Horvath method, are used to determine epigenetic age acceleration. In addition, the AA measures are confounded by age-related functional decline in blood cell composition. Therefore, intrinsic epigenetic age acceleration (IEAA) is used, which is independent of age related changes of cellular composition of blood, contrasting extrinsic epigenetic age acceleration (EEAA), incorporating age-related changes in cellular composition in blood and intrinsic epigenetic changes [13]. Most recently, DNAm GrimAge (DNAmAge_{grim}), a predictor of lifespan, has been developed based on seven DNAm surrogates and a DNAm-based estimator of smoking pack-years. The age acceleration, known as AgeAccelGrim, can also be determined from DNAm GrimAge and henceforth will be denoted as AA_{grim} [14]. In addition, a DNA methylation-based surrogate of plasma protein namely plasminogen activator inhibitor level (DNAmPAII) and its age adjusted estimator (DNAmPAII_{adj}), developed in the same study, can be good biomarkers of aging. Several recent studies, using the Horvath and Hannum methods, have found age acceleration is associated with a number of diseases and phenotypes, such as obesity [15], Alzheimer’s disease [16], Down’s syndrome [17], Huntington disease [18], HIV [19], Parkinson’s disease [20], and earlier menopause [21]. Horvath’s ‘epigenetic

clock’ has also been found to be associated with mortality. For example in a study of older people (> 68 years), those with an apparent epigenetic age 5 years greater than their chronological age had a 21% increased mortality risk over the following 5 years when compared to those with no evidence of age acceleration [22]. DNAmAge_{grim} has been found to be a superior predictor of time-to-death and DNAmPAII has been observed to be associated with lifespan, comorbidity count and type 2 diabetes [14].

To date little is known regarding the association of epigenetic aging, as measured from peripheral blood, and lung function. The 1936 Mid-Lothian Birth Cohort examined the association of various physical measures with epigenetic aging in over 1000 elderly adults (mean age of 69 ± 0.83 years) followed for between 3 and 6 years. Lung function, considered as FEV₁ (forced expiratory volume in one second), was the only one of four physiological measures of aging (others being cognition, grip strength and walking speed) to show an association with DNAmAge, albeit statistically weak (P-value = 0.05), and small in effect size (<1 mL change in FEV₁ per additional year of epigenetic aging). Epigenetic aging explained only 0.33% of the variance in FEV₁ decline [23].

As part of the Aging Lungs in European Cohorts (ALEC) study (www.alecstudy.org) we obtained DNA methylation information from 1,496 adults (age range at baseline: 37 to 61 years), followed for 8 to 11 years, derived from two population-based cohorts specifically designed to investigate lung function. The aim of our study was to examine the cross-sectional and longitudinal association of peripheral blood epigenetic signature of aging with lung function in these general population-based samples of adults using data on both lung function and epigenetic age at two time points multiple years apart.

RESULTS

Descriptive statistics of the cohorts at baseline and follow-up time points are presented in Table 1. The time intervals between the two lung function assessments in Swiss study of Air Pollution and Lung and heart Disease in Adults (SAPALDIA) and the European Community Respiratory Health Survey (ECRHS) were 8.3 and 10.9 years respectively. The SAPALDIA cohort were older with a wider range of ages than the ECRHS (baseline: 50.55 ± 11.3 vs. 43.64 ± 6.76 and follow-up: 58.85 ± 11.26 vs. 54.54 ± 6.78 years). Each cohort had similar proportions of men and women.

Within SAPALDIA, chronological age was more highly correlated with DNAm Age (baseline = 0.91; follow-up

Table 1. Summary of the variables for cohort-specific study populations.

	Baseline		Follow-up		
	SAPALDIA	ECRHS	SAPALDIA	ECRHS	
N	987	509	987	509	
Age (years)	50.55 ± 11.3	43.64 ± 6.76	58.85 ± 11.26	54.54 ± 6.78	
Female (%)	528 (53.50)	290 (56.98)	Same as baseline	Same as baseline	
BMI (kg/m ²)	25.8 ± 4.38	25.23 ± 4.25	26.47 ± 4.61	26.73 ± 4.56	
Height (cm)	169.49 ± 9.27	169.59 ± 9.35	168.77 ± 9.4	168.89 ± 9.35	
Smoking	Never	407 (41.24)	401 (40.63)	208(40.87)	
	Ex	297 (30.09)	165(32.41)	366 (37.08)	209(41.06)
	Current	282 (28.57)	128(25.15)	220 (22.29)	92(18.07)
Pack years	11.95 ± 18.36	9.28 ± 14.89	13.36 ± 20.19	14.02 ± 32.08	
Education [†]	1	54 (5.48)	66 (12.97)	Same as baseline	Same as baseline
	2	644 (65.25)	148 (29.08)	Same as baseline	Same as baseline
	3	288 (29.18)	295 (57.96)	Same as baseline	Same as baseline
Ever asthma	124 (12.56)	79 (15.52)	111 (11.25)	95 (18.66)	
FEV ₁ (L)	3.25 ± 0.83	3.41 ± 0.78	2.96 ± 0.84	2.95 ± 0.75	
FVC (L)	4.35 ± 1.05	4.25 ± 0.97	4.05 ± 1.06	3.92 ± 0.97	
FEV ₁ /FVC	0.75 ± 0.07	0.8 ± 0.06	0.73 ± 0.08	0.75 ± 0.06	

Data are presented as n (%) for categorical and mean ± SD for continuous variables.

† For SAPALDIA: 1: Low (primary school); 2: Middle (secondary school, middle school or apprenticeship); 3: High (Technical College or University). For ECRHS: education finishes at 1: ≤16 year; 2: 17-19 year; 3: 20+ years.

Table 2. Summary of chronological and DNAmAge derived from methylation values presented as mean ± SD.

	N	Age (years)	DNAmAge	R	MAD
SAPALDIA (baseline)	987	50.55 ± 11.3	52.07± 10	0.91	3.4
SAPALDIA (follow-up)	987	58.85± 11.26	58.5 ± 9.78	0.89	3.3
ECRHS (baseline)	509	43.64 ± 6.76	47.04 ± 8.32	0.64	3.8
ECRHS (follow-up)	509	54.54 ± 6.78	55.75 ± 7.43	0.71	2.9

R = correlation between chronological and DNAmAge. Here DNAmAge has been calculated using Horvath method. MAD = Median Absolute Deviation.

= 0.89) than in the ECRHS (baseline = 0.64; follow-up = 0.71). However, the median absolute deviation suggested little variability and the probability of outliers in estimated DNAmAge was low (Table 2).

Cross-sectional association between lung function and age acceleration at baseline and follow-up time point separately

Results from linear models examining associations of forced expiratory volume in one second (FEV₁) with age acceleration at each time point cross-sectionally within SAPALDIA and ECRHS are presented in Table 3. Effect

estimates were larger in women than men and reached statistical significance (P-value < 0.05) at follow-up time point in women only. In women, at the follow-up time point, FEV₁ was associated with AA_{res} (P-value = 4 x 10⁻⁴), where with one year increase of AA_{res}, there was a decrement of 9.52 mL in FEV₁ (CI: -14.77 mL/year_{AA} to -4.28 mL/year_{AA}). The same was been observed for IEAA, where FEV₁ was 11.30 mL lower per year increase of IEAA (95% CI: -17.21 mL/year_{IEAA} to -4.20 mL/year_{IEAA} and P-value = 2 x 10⁻⁴). A marginal association between EEAA and FEV₁ was observed in the same time point for female subjects (estimate = -5.11 mL/year_{EEAA}; 95% CI: -10.16

Table 3. Cross-sectional meta-analysis results of association between age acceleration and FEV₁ and FVC in SAPALDIA and ECRHS cohorts.

Lung functions	Sex	Age acceleration	Baseline				Follow-up			
			Estimate	Lower bound	Upper bound	P-value	Estimate	Lower bound	Upper bound	P-value
FEV ₁	Male	AA _{res}	-1.27	-9.16	6.62	0.75	-5.39	-14.48	3.69	0.25
		IEAA	-2.47	-10.52	5.58	0.55	-5.16	-14.35	4.04	0.44
		EEAA	-0.94	-8.44	6.55	0.81	-6.32	-15.24	2.59	0.17
	Female	AA _{res}	-3.02	-9.17	1.34	0.14	-9.52	-14.77	-4.28	4 x 10 ⁻⁰⁴ *
		IEAA	-5.00	-10.60	0.60	0.08	-11.30	-17.21	-4.20	2 x 10 ⁻⁰⁴ *
		EEAA	-4.35	-9.39	0.69	0.09	-5.107	-10.16	0.01	0.05*
FVC	Male	AA _{res}	-4.25	-13.31	4.82	0.36	-10.83	-20.95	-0.71	0.04*
		IEAA	-5.04	-14.30	4.22	0.30	-9.29	-19.57	0.99	0.08
		EEAA	0.69	-7.85	9.23	0.87	-4.69	-10.46	1.26	0.12
	Female	AA _{res}	-4.61	-10.64	1.42	0.13	-9.31	-15.42	-3.20	0.003*
		IEAA	-5.21	-11.65	1.23	0.11	-10.49	-17.37	-3.60	0.003*
		EEAA	-8.06	-17.90	1.78	0.11	-4.86	-10.76	1.03	0.11

Here, Estimate = difference in lung function per year of epigenetic age acceleration (mL/year). Negative values denote that with every year of increase in epigenetic age acceleration, FEV₁ decreases and vice-versa; Lower and upper = lower and upper ranges of 95% confidence interval of estimates; P-value = p-values from meta-analyses.

mL/year_{EEAA} to 0.01 mL/year_{EEAA}, P-value = 0.05). (Table 3, Figure 1). EEAA was found marginally significantly associated (P-value = 0.05) with only FEV₁, in women at the later time point.

A similar association for women at the later time point was found for forced vital capacity (FVC) (AA_{res}: -9.31 mL/year; 95% CI: -15.42 mL/year to -3.20 mL/year, P-value = 0.003 and IEAA: -10.49 mL/year; 95% CI: -17.37 mL/year to -3.60 mL/year, P-value = 0.003) (Table 3) and for FEV₁/FVC, IEAA was found associated (Supplementary Table 1C).

In men, only AA_{res} was found to be significantly associated with FVC (-10.83 mL/year; 95% CI: -20.95 mL/year to -0.71 mL/year, P-value = 0.04) from the follow-up.

Association between lung function and age acceleration from repeated measures at baseline and follow-up time points combined

In women, there was evidence for a weak association of lower FEV₁ with EEAA (estimate = -3.58 mL/year; 95% CI: -7.21 mL/year to 0.04 mL/year and P-value = 0.05) (Table 4; Figure 2). There was no evidence that age acceleration is associated with lung function in men (Supplementary Table 2A).

Association between longitudinal change in epigenetic age acceleration and change in lung function changes over follow-up

A linear model was used to investigate whether the change in biological aging between baseline and follow-up was associated with rate of change in lung function between the two time points. Both cohorts showed no association of lung function decline with change in biological age acceleration.

A weak association of rate of FEV₁ change with biological age acceleration derived from IEAA (0.52 mL/year of epigenetic age acceleration; 95% CI: -0.02 mL/epigenetic year to 1.05 mL/epigenetic year and P-value = 0.06) was observed in men (Supplementary Table 3). This same trend was not seen in women (0.18 mL/year of epigenetic age; 95% CI: -0.15 mL/epigenetic year to 0.05 mL/epigenetic year and P-value = 0.2).

Effect of menopause on lung function and epigenetic age acceleration

We incorporated a variable indicating menopausal status (pre-, peri-, and post-menopausal) at follow-up for the 528 SAPALDIA and 223 ECRHS women. AA_{res} and IEAA at follow-up remained associated with FEV₁

at follow-up in women (AA_{res} : -9.99 mL/year; 95% CI: -16.03 mL/year to -3.96 mL/year and P-value = 0.001 and IEAA: -10.81 mL/year; 95% CI: -17.12 mL/year to -4.49 mL/year and P-value = 0.001). However, the effect size of FEV_1 for female samples for the follow-up time point was marginally reduced. The association between FVC, and AA_{res} and IEAA also remained significant following adjustment for menopausal status (Table 5). Comparison of the meta-analyses with and without menopausal status using ANOVA showed no significant differences (Supplementary Table 4).

The stratified cross-sectional analysis of female samples showed association of marginal significance (P-value =

0.057) in lung function (FEV_1) decline (-119 mL; 95% CI: 222 mL to 3mL) in post-menopausal women compared to with pre-menopausal women (Supplementary Table 5). No association was observed between menopausal status and age acceleration measures (Supplementary Table 6).

Age stratified analysis in females

Significant associations between lung function (FEV_1 and FVC) and age acceleration (AA_{res} and IEAA) were observed both in male and female samples in the cross-sectional age stratified analysis. AA_{res} and IEAA were found to be significantly associated with FEV_1 in age

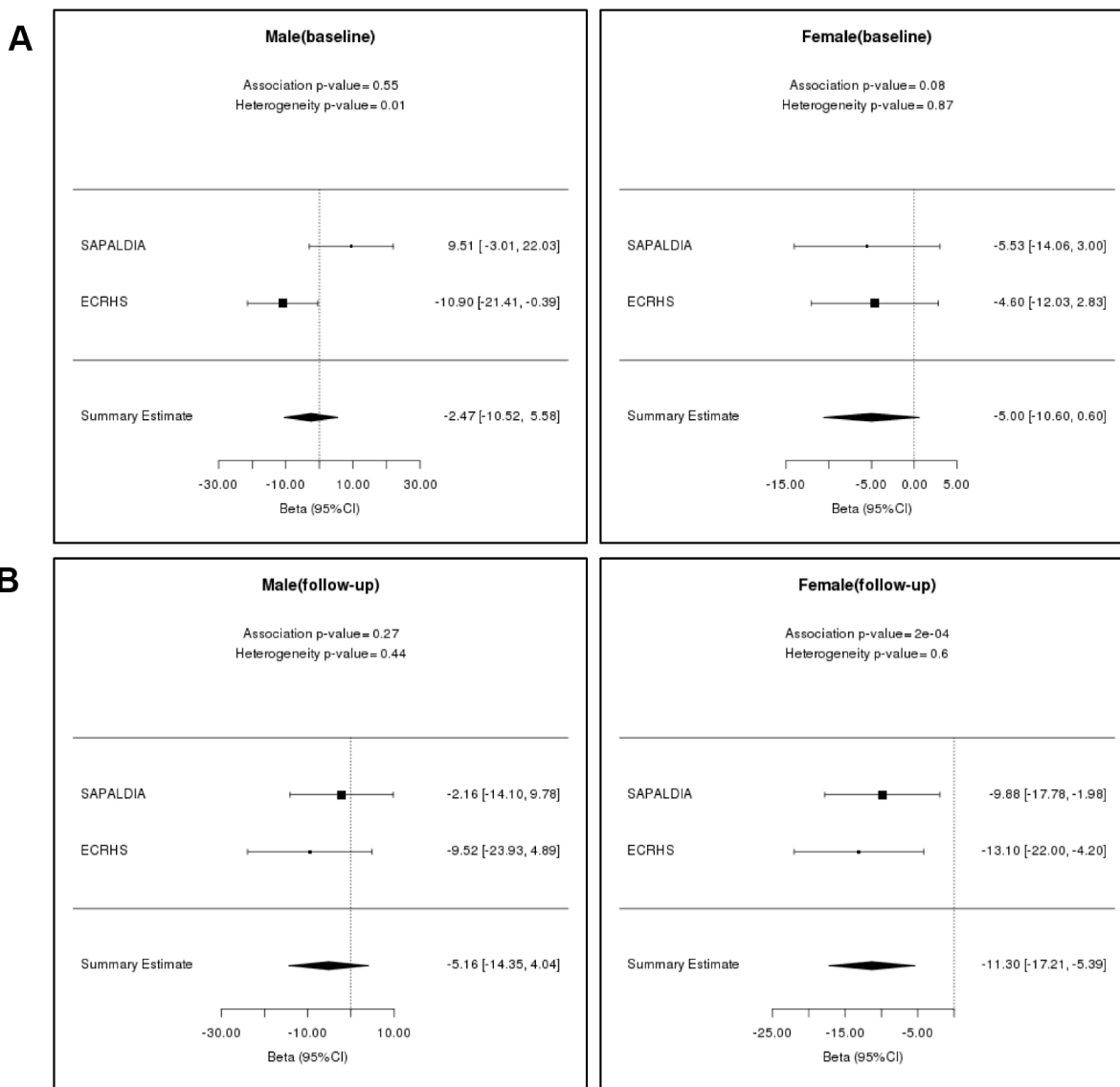


Figure 1. Cross-sectional meta-analysis results for FEV_1 of males and females in SAPALDIA and ECRHS. (A) Mean change in FEV_1 (mL) per year of intrinsic epigenetic age acceleration at baseline; (B) Mean change in FEV_1 (mL) per year of intrinsic epigenetic age acceleration at follow-up. The estimates have been measured with 95% confidence interval in mL/year.

Table 4. Meta-analysis results of repeat cross-sectional association between age acceleration and FEV₁ in SAPALDIA and ECRHS cohorts from two time points (baseline and follow-up).

	Age acceleration	Estimate	Lower bound	Upper bound	P-value
Male	AA _{res}	1.20	-3.41	5.81	0.87
	IEAA	3.23	-1.21	7.68	0.9
	EEAA	-5.03	-11.56	1.51	0.13
Female	AA _{res}	-1.56	-4.10	0.99	0.13
	IEAA	-1.38	-4.23	1.47	0.19
	EEAA	-3.58	-7.21	0.04	0.05

Here, Estimate = changes in lung function per year of epigenetic age acceleration (mL/year). Negative values denote that with every unit of increase in epigenetic age acceleration, FEV₁ decreases and vice-versa; Lower and upper = lower and upper ranges of 95% confidence interval of estimates; P-value = p-values from meta-analyses.

groups 50 – 60 and 60 – 70 in female samples (Supplementary Table 7A). The same trend was observed for FVC (Supplementary Table 7B). No significant association was observed for FEV₁/FVC (Supplementary Table 7C). IEAA were found to be significantly associated with both FEV₁ and FVC in age groups 50 – 60 in males. However, while consistent lung function decline (for FEV₁ and FVC) per epigenetic year (for AA_{res} and IEAA) is found up to 70 years in females, the same trend is not observed in males (Figure 3, Supplementary Figure 2).

Cross-sectional association between lung function and DNAmAge_{grim}, AA_{grim}, DNAmPAI1 and DNAmPAI1_{adj} at baseline and follow-up time point separately

Strong associations between lung function and DNAmAge_{grim} and AA_{grim} were observed respectively in the cross-sectional analyses for both baseline and follow-up time points (Table 6). The rate of changes in lung function declines are found stronger in follow-up years than that of the baseline for both DNAmAge_{grim}

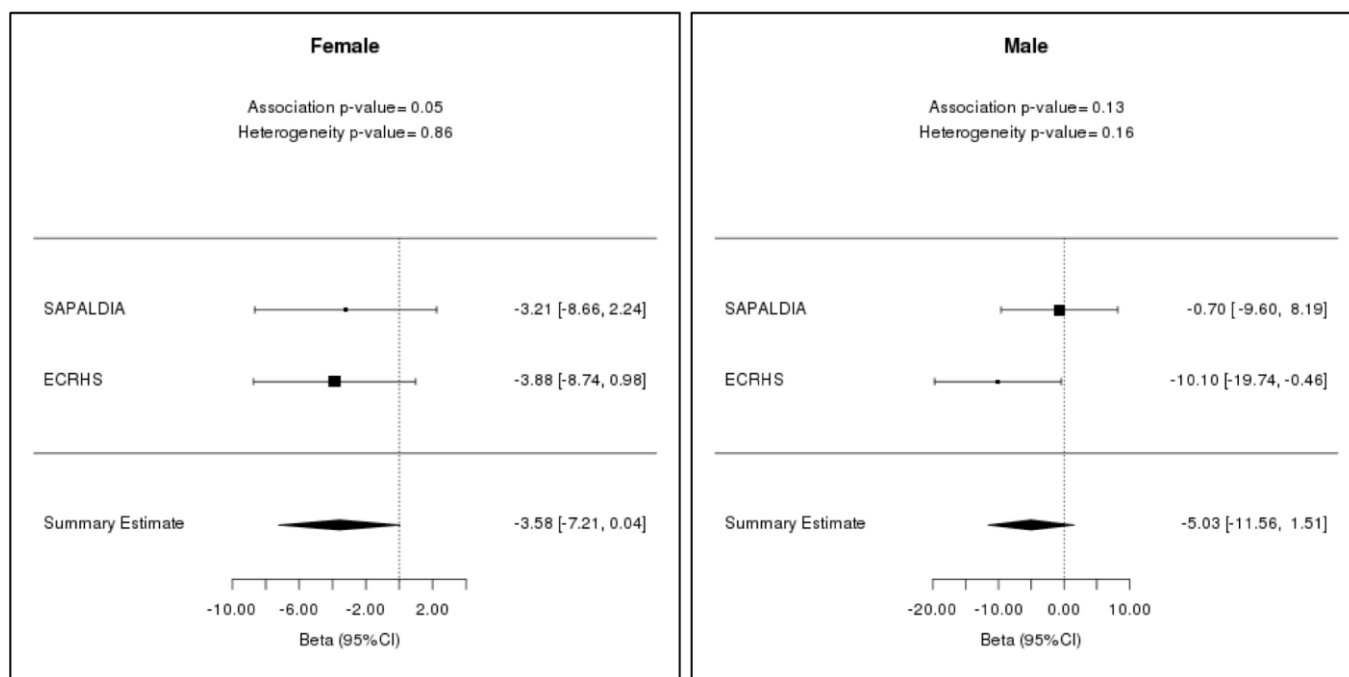


Figure 2. Linear mixed model meta-analysis results for FEV₁ of males and females in SAPALDIA and ECRHS for two time points (baseline and follow-up). The estimates have been measured with 95% confidence interval in mL/year.

Table 5. Meta-analysis results of repeat cross-sectional association between age acceleration and FEV₁ in SAPALDIA and ECRHS cohorts from two time points (baseline and follow-up) in women (SAPALDIA: n=528; ECRHS: n=290), adjusted for menopausal status.

Lung functions	Age acceleration	Estimate	Lower estimate	Upper estimate	P-value
FEV ₁	AA _{res}	-9.99	-16.03	-3.96	0.001*
	IEAA	-10.81	-17.12	-4.49	0.001*
	EEAA	-5.21	-10.51	0.1	0.06
FVC	AA _{res}	-10.23	-17.25	-3.22	0.004*
	IEAA	-10.97	-18.32	-3.63	0.003*
	EEAA	-5.86	-12.00	0.28	0.06
FEV ₁ /FVC	AA _{res}	-0.0008	-0.002	0.0002	0.108
	IEAA	-0.0008	-0.001	0.0003	0.138
	EEAA	-0.0007	-0.002	0.0005	0.255

Estimate = difference in lung function per year of epigenetic age acceleration (mL/year for FEV₁ and FVC). Negative values denote that with every unit of increase in epigenetic age acceleration lung function decreases and vice-versa; Lower and upper = lower and upper ranges of 95% confidence interval of estimates; P-value = p-values from meta-analysis.

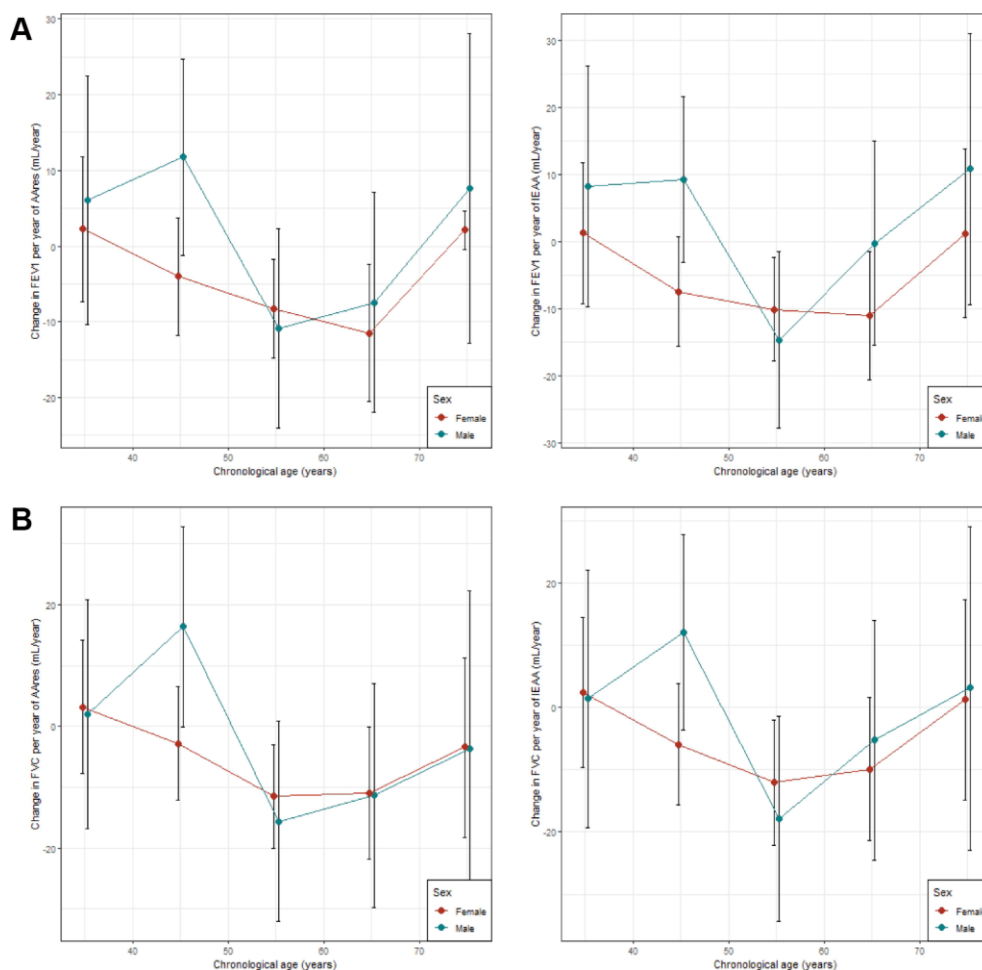


Figure 3. Age stratified analyses comparing association between lung and age accelerations. (A) Comparison between association between FEV₁ and age accelerations (AA_{res} and IEAA); **(B)** Comparison between association between FVC and age accelerations (AA_{res} and IEAA). X-axis represents stratifications by 10 years intervals. Y-axis represents the estimates (changed in lung function per year of epigenetic age acceleration in mL/year) from the linear models with 95% confidence intervals.

Table 6. Cross-sectional meta-analysis results of association between DNAm GrimAge (DNAmAge_{grim}) and its age-adjusted measure (AA_{grim}) with lung function in SAPALDIA and ECRHS cohorts.

Lung functions		Baseline				Follow-up			
		Estimate	Lower bound	Upper bound	P-value	Estimate	Lower bound	Upper bound	P-value
FEV ₁	DNAmAge _{grim}	-12.72	-17.91	-7.52	1.62 x 10 ^{-06*}	-30.14	-37.05	-23.23	1.25 x 10 ^{-17*}
	AA _{grim}	-11.96	-17.17	-6.76	6.67 x 10 ^{-06*}	-29.35	-36.32	-22.39	1.42 x 10 ^{-16*}
FVC	DNAmAge _{grim}	-7.56	-13.59	-1.53	0.01*	-29.42	-37.46	-21.39	7 x 10 ^{-13*}
	AA _{grim}	-6.64	-12.69	-0.59	0.03*	-28.48	-36.57	-20.39	5.25 x 10 ^{-12*}
FEV ₁ /FVC	DNAmAge _{grim}	-0.001	-0.002	-0.0005	6.68 x 10 ^{-04*}	-0.002	-0.003	-0.001	4.85 x 10 ^{-06*}
	AA _{grim}	-0.001	-0.002	-0.0005	7.25 x 10 ^{-04*}	-0.002	-0.003	-0.001	7.06 x 10 ^{-06*}

Here Estimate = changes in lung function per year of epigenetic age and age acceleration (mL/year for DNAmAge_{grim}; mL/year_{AA} for AA_{grim}). Negative values denote that with every year of increase in epigenetic age acceleration, lung function decreases and vice-versa; Lower and upper = lower and upper ranges of 95% confidence interval of estimates; P-value = p-values from meta-analyses.

(FEV₁: -12.72 mL/year to -30.14 mL/year; FVC: -7.56 mL/year to -29.42 mL/year; FEV₁/FVC: -0.001 to -0.002) and AA_{grim} (FEV₁: -11.96 mL/year to -29.35 mL/year; FVC: -6.64 mL/year to -28.48 mL/year; FEV₁/FVC: -0.001 to -0.002), and the same trend is observed for AA_{grim}. Similar strong associations between lung functions (FEV₁ and FVC) and DNAmPAI1 and DNAmPAI1_{adj} were observed respectively in the cross-sectional analyses for both baseline and follow-up time points (Table 7). Though no association was found between FEV₁/FVC, and DNAmPAI1 and DNAmPAI1_{adj} at baseline time point, a significant association was still observed at the follow-up time point. However, association between FEV₁/FVC with DNAmAge_{grim}, DNAmPAI1 and their associated age adjusted measures showed high level of heterogeneity at baseline time point (shown in heterogeneity p-values in Supplementary Figure 3).

Association between lung function and DNAmAge_{grim}, AA_{grim}, DNAmPAI1 and DNAmPAI1_{adj} from repeated measures at baseline and follow-up time points combined

There was evidence for significant associations of lower FEV₁ and FVC with DNAmAge_{grim}, AA_{grim}, DNAmPAI1, and DNAmPAI1_{adj} (Table 8). FEV₁/FVC is only found significantly associated with DNAmAge_{grim} and AA_{grim}. However, the associations between lung function and DNAmAge_{grim} and AA_{grim} exhibited high level of heterogeneity (shown in heterogeneity p-values in Supplementary Figure 4).

DISCUSSION

Using longitudinal data from two population-based cohorts we have examined the association of lung function with epigenetic aging and shown that lung function is associated with measures of epigenetic age acceleration, particularly in women and with increasing age. Lung function decline is found to be strongly associated with increase in DNA methylation-based lifespan predictors, plasma protein levels, and their related age adjusted measures.

This is one of the first studies to examine the association of age acceleration on lung function over more than one time point, and similar to the Mid-Lothian cohort showing marginal association of FEV₁ with epigenetic age acceleration [30]. In the Mid-Lothian birth cohort study, participants were of older age (70 years at baseline, 76 years at follow-up) than the studies used here, whereas the present study investigates a wider and younger age range (37 to 61 years at baseline, 48 to 70 years at follow-up) and a follow-up time window of 8 to 11 years for SAPALDIA and ECRHS.

Our findings suggest that lung function is associated with age acceleration in women and particularly in women above age of 50 years. FEV₁ was found to be declining at a rate of 9.5 mL per year of age acceleration using AA_{res} and 11.3 mL per year of age acceleration using IEAA. This same trend was observed for FVC. This observation was further supported by SAPALDIA baseline measures (which were in an older

Table 7. Cross-sectional meta-analysis results of association between DNAm based plasminogen activation inhibitor 1 (DNAmPAI1) and its age adjusted (DNAmPAI1_{adj}) levels with lung function in SAPALDIA and ECRHS cohorts.

Lung functions		Baseline				Follow-up			
		Estimate	Lower bound	Upper bound	P-value	Estimate	Lower bound	Upper bound	P-value
FEV ₁	DNAmPAI1	-0.020	-0.029	-0.011	8.85 x 10 ^{-06*}	-0.032	-0.041	-0.022	3.63 x 10 ^{-11*}
	DNAmPAI1 _{adj}	-0.019	-0.028	-0.010	2.57 x 10 ^{-05*}	-0.031	-0.041	-0.022	9.67 x 10 ^{-11*}
FVC	DNAmPAI1	-0.018	-0.028	-0.008	4.84 x 10 ^{-04*}	-0.029	-0.039	-0.018	2.14 x 10 ^{-07*}
	DNAmPAI1 _{adj}	-0.018	-0.029	-0.008	4.34 x 10 ^{-04*}	-0.029	-0.040	-0.018	1.53 x 10 ^{-07*}
FEV ₁ /FVC	DNAmPAI1	-1 x 10 ⁻⁶	-2 x 10 ⁻⁶	0.00	0.14	-2x 10 ⁻⁶	-4 x 10 ⁻⁶	-1 x 10 ⁻⁶	0.002*
	DNAmPAI1 _{adj}	-1 x 10 ⁻⁶	-2 x 10 ⁻⁶	1 x 10 ⁻⁶	0.29	-2x 10 ⁻⁶	-3 x 10 ⁻⁶	-1 x 10 ⁻⁶	0.003*

Here, Estimate = difference in lung function (mL) per unit of DNAmPAI1 and DNAmPAI1_{adj}. Negative values denote that with every year of increase in epigenetic age acceleration, lung function decreases and vice-versa; Lower and upper = lower and upper ranges of 95% confidence interval of estimates; P-value = p-values from meta-analyses.

Table 8. Meta-analysis results of repeat cross-sectional association between DNAmAge_{grim}, AA_{grim}, DNAmPAI1, and DNAmPAI1_{adj} with lung function in SAPALDIA and ECRHS cohorts from two time points (baseline and follow-up).

Lung functions		Estimate	Lower bound	Upper bound	P-value
FEV ₁	DNAmAge _{grim}	-12.91	-16.63	-9.19	1.03 x 10 ^{-11*}
	AA _{grim}	-12.28	-16.03	-8.53	1.37 x 10 ^{-10*}
	DNAmPAI1	-0.013	-0.018	-0.008	1.71 x 10 ^{-06*}
	DNAmPAI1 _{adj}	-0.0119	-0.0171	-0.0067	7.81 x 10 ^{-06*}
FVC	DNAmAge _{grim}	-12.29	-16.92	-7.66	2 x 10 ^{-07*}
	AA _{grim}	-11.12	-15.78	-6.45	2.98 x 10 ^{-06*}
	DNAmPAI1	-0.020	-0.027	-0.013	1.14 x 10 ^{-08*}
	DNAmPAI1 _{adj}	-0.019	-0.026	-0.012	3.47 x 10 ^{-08*}
FEV ₁ /FVC	DNAmAge _{grim}	-0.0009	-0.002	-0.0003	0.002*
	AA _{grim}	-0.0009	-0.002	-0.0003	0.002*
	DNAmPAI1	1 x 10 ⁻⁷	-8 x 10 ⁻⁶	9 x 10 ⁻⁶	0.99
	DNAmPAI1 _{adj}	9 x 10 ⁻⁷	-8 x 10 ⁻⁶	1 x 10 ⁻⁵	0.83

Here, Estimate = changes in lung function per year of epigenetic age and age acceleration (mL/year for DNAmAge_{grim}; mL/year_{AA} for AA_{grim}) and per unit of PAI-1 for DNAmPAI1 and DNAmPAI1_{adj}. Negative values denote that with every unit of increase in DNAmAge_{grim}, AA_{grim}, DNAmPAI1, and DNAmPAI1_{adj} lung function decreases and vice-versa; Lower and upper = lower and upper ranges of 95% confidence interval of estimates; P-value = p-values from meta-analyses.

group of women) showing a greater effect of age acceleration on lung function decline than the ECRHS baseline.

Early menopause and post-menopausal status have previously been linked with lower lung function [24] and menopause has been shown to accelerate epigenetic

aging of blood [21]. Mendelian randomization studies have supported a casual effect of menopause on IEAA [25]. Therefore, we postulated that one explanation for the stronger association of lung function with age acceleration in the older women could be hormonal changes. There was a marginally significant association (P-value < 0.1) in lung function decline in post-

menopausal females, compared with pre-menopausal females and adjusting for menopausal status resulted associations between lung function and age acceleration became less strong. However, there were no significant differences between the two models. This suggests that the onset of menopause may only partially explain the stronger associations observed between age acceleration and lung function in older female subjects. We also observed no significant association between measures of epigenetic age acceleration and menopause in our study sample.

When the association from the repeated measures from two time points was assessed, a marginal association was found in female subjects, showing a 3.94 ml decline in FVC per year of epigenetic age acceleration (AA_{res}). In contrast, while measuring the effect of age acceleration on lung function decline between baseline and follow-up, there were no significant associations, suggesting that decline in lung function is proportional to the overall degree of biological aging.

The most interesting results were achieved for DNAm based lifespan predictors, $DNAmAge_{grim}$ and AA_{grim} , which have been found strongly associated with lung function for both baseline and follow-up time points and combined. However, results for the combined repeated time points should be interpreted with caution due to the presence of indication of heterogeneity between two cohorts. DNAm based plasma protein levels, PAI-1 and age adjusted PAI-1, were also observed to be associated with lung function both cross-sectionally and in combined repeated measures. This association result is of particular interest as studies have shown elevated PAI-1 level to be associated with lung function decline [26, 27], which corroborates with our findings.

One limitation of this study is that we have used epigenetic age derived from blood rather than lung tissue to assess associations. However, epigenetic aging measured from blood has been found to be associated with a number of other non-blood related diseases and phenotypes such as lung cancer [28], metabolic syndrome [15], and developmental disorders [29]. Additionally, other physiological changes (such as hormonal changes) were not considered. Though we have used menopausal status in sensitivity analyses as a categorical variable, adding direct measures of sex hormone concentrations may provide more insight.

In conclusion, this study suggests that epigenetic age acceleration is significantly associated with lung function in women older than 50 years. We hypothesised that this could be due to menopause. However, we have observed that menopause has minimal effect and therefore there is possibility of other

unknown physiological factors at older age in females mediating the epigenetic age acceleration effect on lung function. While, it is still unknown what exactly epigenetic aging from DNA methylation measures, this study suggests it can be utilised as one of the important factors to assess women's lung health in old age. DNAm methylation-based lifespan predictors, such as: DNAm GrimAge and plasma protein levels, are strongly associated with lung function and therefore this study suggests that these can be utilised as important factors to assess lung health in adults.

MATERIALS AND METHODS

Study population

Information from 1,496 participants taking part in either the Swiss study of Air Pollution and Lung and heart Disease in Adults (SAPALDIA) [30, 31] (N=987), or the European Community Respiratory Health Survey (ECRHS) [32] (N=509) were used in this investigation. Measures of lung function, relevant confounders and DNAm of the samples were taken at two time points (baseline and follow-up).

DNA methylation

DNA for all cohorts was extracted from peripheral blood samples taken at two consecutive surveys 8 years apart in SAPALDIA and 11 years apart in ECRHS. Samples for testing were selected on the basis of having lung function complete and high quality of information on lung function and relevant confounders. Genome-wide DNA methylation was quantified using the Illumina Infinium HumanMethylation450 Beadchip for SAPALDIA samples and using the Illumina Infinium HumanEPIC Beadchip for ECRHS samples. Samples from two time points derived from the same subject were placed next to each other on the array to minimise batch effect. Sample and CpG marker quality control procedures for epigenetic data of both cohorts are described elsewhere [33].

Measures of epigenetic aging

DNA methylation age ($DNAmAge$) was calculated using (a) the Horvath method [10] using 353 cytosine-phosphate-guanine sites (CpGs) common to the Illumina 450K and EPIC Methylation arrays, and (b) Hannum's method using 71 CpGs [9]. Age acceleration residuals (AA_{res}) were calculated from a linear regression model by regression of $DNAmAge$ on chronological age. Further, AA_{res} measures were adjusted for blood cell counts to calculate Intrinsic Epigenetic Age Acceleration (IEAA) using the Horvath method and Extrinsic Epigenetic Age Acceleration

(EEAA) using Hannum method, described in [13]. Age acceleration measures (IEAA and EEAA) were estimated using an online calculator (available from: <https://dnamage.genetics.ucla.edu/submit>). DNAm based GrimAge and its associated age acceleration measures (DNAmAge_{grim} and AA_{grim}) and DNAm-based estimators of plasma proteins and its age adjusted level (DNAmPAI1 and DNAmPAI1_{adj}) were calculated using the new online calculator (available from: <https://dnamage.genetics.ucla.edu/new>)

Lung function measures

Two objective measures of lung function, forced expiratory volume in one second (FEV₁) and forced vital capacity (FVC), and their ratio (FEV₁/FVC) were examined. They were measured by trained personnel according to the ATS/ERS recommendations [34]. Lung function measures for SAPALDIA was obtained from 2001 and 2010 measurements with correction for change in spirometers (SensorMedics to Easy One : ndd Medical Technologies, Zurich, Switzerland) [35]. For ECRHS, different spirometers were used in each centre (Biomedin in the UK, Sensor Medics in Norway and Jaeger Pneumolab in Germany) at baseline and the same spirometer (Easy One: ndd Medical Technologies, Zurich, Switzerland) was used in all centres at follow-up.

Covariates

Analyses were adjusted for age, sex, height (cm), body mass index (kg/m²), self-reported history of lifetime asthma, level of completed education as a proxy for socio-economic status, and smoking status (never, former, current) for both time points. The study centres were also considered as covariates as the samples were distributed over multiple geographical areas.

Statistical analysis

To assess the variability between chronological age and DNAmAge, correlation and Median Absolute Deviation (MAD) were determined. To assess the association of lung function with age acceleration (AA) cross-sectionally, linear regression was used for each of the two time points (approximately 10 years apart) with lung function as the outcome and AA as predictor while adjusting for all covariates (Model 1). Secondly, a linear mixed model was used to assess the association of lung function with age acceleration by combining the available data at both time points for each individual, adjusting for all covariates from both time points (Model 2). This model incorporates sample and time point differences by introducing random intercepts for individuals and time points. In the third model, the association of lung function change (mL/year) with

change in DNAmAge from baseline and follow-up (calculated from the difference between DNAmAge between two time points) was assessed (Model 3). The rate of lung function change was defined by $\frac{Lung\ function_{follow-up} - Lung\ function_{base}}{Age_{follow-up} - Age_{base}}$. For Model 3

average BMI, average height, educational status at any time point, transition in asthma status, change in smoking status and centres were used as covariates. Samples with discrepancies in educational status and centres were removed. As epigenetic age acceleration has previously been found to be strongly associated with sex [36] (Supplementary Figure 1), and thus all models were *a priori* stratified by sex. In addition, the association between lung function and DNAmAge_{grim}, AA_{grim}, DNAmPAI1, and DNAmPAI1_{adj} were assessed individually following Models 1 and 2. In this case, the associations were not stratified by sex. All models were performed in each cohort separately and effect estimates were meta-analysed using a fixed-effect model weighted by the inverse of the variance, using the R package “metafor” [37].

Associations of AA, except AA_{grim}, with lung function were further explored using an age stratified analysis (by 10 years: 30 – 40 years, 40 – 50 years, 50 – 60 years, 60 – 70 years, and 70 – 80 years) using a linear mixed effects model.

Further analyses were undertaken on female subjects at follow-up using menopausal status (pre-, peri-, and post-menopausal) to identify the effect of menopause on lung function and age accelerations using linear models adjusted for above mentioned covariates. The classifications of menopausal status for individual cohort have been described elsewhere [24, 38]. All statistical analyses were performed with R v3.3.2 [39].

AUTHOR CONTRIBUTIONS

Conceived and designed current analysis: FIR, JWH, NPH, DJ. Performed statistical analyses: FIR, MI, AFSA, MW, AJ. Drafted the manuscript: FIR, JWH, DJ. Supervised research, cohort and supplementary data collection: JWH, NPH, DJ, MRJ, KT, FGR. Provided critical input and revised the manuscript for important intellectual content: All. Approved the final manuscript: All. Take responsibility for the integrity of the data and the accuracy of the data analysis: All.

ACKNOWLEDGMENTS

Cohort-specific acknowledgments is provided in the online supplement.

CONFLICTS OF INTEREST

The following authors report no competing interests: FIR, MI, MW, AFSA, MW, AJ, KT, FGR, MRJ, NPH. DJ and JWH report grants from European Union during the conduct of the study.

FUNDING

This work is funded by European Union's H2020 research programme. The funding agency had no role in the design, data collection and analysis of the data. Cohort-specific funding details are provided in the online supplement.

REFERENCES

1. Gupta RP, Strachan DP. Ventilatory function as a predictor of mortality in lifelong non-smokers: evidence from large British cohort studies. *BMJ Open*. 2017; 7:e015381. <https://doi.org/10.1136/bmjopen-2016-015381> PMID:[28706094](https://pubmed.ncbi.nlm.nih.gov/28706094/)
2. Dyer C. The interaction of ageing and lung disease. *Chron Respir Dis*. 2012; 9:63–67. <https://doi.org/10.1177/1479972311433766> PMID:[22308556](https://pubmed.ncbi.nlm.nih.gov/22308556/)
3. Sharma G, Goodwin J. Effect of aging on respiratory system physiology and immunology. *Clin Interv Aging*. 2006; 1:253–60. <https://doi.org/10.2147/ciia.2006.1.3.253> PMID:[18046878](https://pubmed.ncbi.nlm.nih.gov/18046878/)
4. Tarnoki DL, Tarnoki AD, Lazar Z, Medda E, Littvay L, Cotichini R, Fagnani C, Stazi MA, Nisticó L, Lucatelli P, Boatta E, Zini C, Fanelli F, et al. Genetic and environmental factors on the relation of lung function and arterial stiffness. *Respir Med*. 2013; 107:927–35. <https://doi.org/10.1016/j.rmed.2013.02.002> PMID:[23481174](https://pubmed.ncbi.nlm.nih.gov/23481174/)
5. Adam M, Schikowski T, Carsin AE, Cai Y, Jacquemin B, Sanchez M, Vierkötter A, Marcon A, Keidel D, Sugiri D, Al Kanani Z, Nadif R, Siroux V, et al. Adult lung function and long-term air pollution exposure. ESCAPE: a multicentre cohort study and meta-analysis. *Eur Respir J*. 2015; 45:38–50. <https://doi.org/10.1183/09031936.00130014> PMID:[25193994](https://pubmed.ncbi.nlm.nih.gov/25193994/)
6. Burchfiel CM, Marcus EB, Curb JD, Maclean CJ, Vollmer WM, Johnson LR, Fong KO, Rodriguez BL, Masaki KH, Buist AS. Effects of smoking and smoking cessation on longitudinal decline in pulmonary function. *Am J Respir Crit Care Med*. 1995; 151:1778–85. <https://doi.org/10.1164/ajrccm.151.6.7767520> PMID:[7767520](https://pubmed.ncbi.nlm.nih.gov/7767520/)
7. Sunyer J. Lung function effects of chronic exposure to air pollution. *Thorax*. 2009; 64:645–46. <https://doi.org/10.1136/thx.2009.115071> PMID:[19638558](https://pubmed.ncbi.nlm.nih.gov/19638558/)
8. Bocklandt S, Lin W, Sehl ME, Sánchez FJ, Sinsheimer JS, Horvath S, Vilain E. Epigenetic predictor of age. *PLoS One*. 2011; 6:e14821. <https://doi.org/10.1371/journal.pone.0014821> PMID:[21731603](https://pubmed.ncbi.nlm.nih.gov/21731603/)
9. Hannum G, Guinney J, Zhao L, Zhang L, Hughes G, Sada S, Klotzle B, Bibikova M, Fan JB, Gao Y, Deconde R, Chen M, Rajapakse I, et al. Genome-wide methylation profiles reveal quantitative views of human aging rates. *Mol Cell*. 2013; 49:359–67. <https://doi.org/10.1016/j.molcel.2012.10.016> PMID:[23177740](https://pubmed.ncbi.nlm.nih.gov/23177740/)
10. Horvath S. DNA methylation age of human tissues and cell types. *Genome Biol*. 2013; 14:R115. <https://doi.org/10.1186/gb-2013-14-10-r115> PMID:[24138928](https://pubmed.ncbi.nlm.nih.gov/24138928/)
11. Jones MJ, Goodman SJ, Kobor MS. DNA methylation and healthy human aging. *Aging Cell*. 2015; 14:924–32. <https://doi.org/10.1111/accel.12349> PMID:[25913071](https://pubmed.ncbi.nlm.nih.gov/25913071/)
12. Weidner CI, Lin Q, Koch CM, Eisele L, Beier F, Ziegler P, Bauerschlag DO, Jöckel KH, Erbel R, Mühleisen TW, Zenke M, Brummendorf TH, Wagner W. Aging of blood can be tracked by DNA methylation changes at just three CpG sites. *Genome Biol*. 2014; 15:R24. <https://doi.org/10.1186/gb-2014-15-2-r24> PMID:[24490752](https://pubmed.ncbi.nlm.nih.gov/24490752/)
13. Chen BH, Marioni RE, Colicino E, Peters MJ, Ward-Caviness CK, Tsai PC, Roetker NS, Just AC, Demerath EW, Guan W, Bressler J, Fornage M, Studenski S, et al. DNA methylation-based measures of biological age: meta-analysis predicting time to death. *Aging (Albany NY)*. 2016; 8:1844–65. <https://doi.org/10.18632/aging.101020> PMID:[27690265](https://pubmed.ncbi.nlm.nih.gov/27690265/)
14. Lu AT, Quach A, Wilson JG, Reiner AP, Aviv A, Raj K, Hou L, Baccarelli AA, Li Y, Stewart JD, Whitsel EA, Assimes TL, Ferrucci L, Horvath S. DNA methylation GrimAge strongly predicts lifespan and healthspan. *Aging (Albany NY)*. 2019; 11:303–27. <https://doi.org/10.18632/aging.101684> PMID:[30669119](https://pubmed.ncbi.nlm.nih.gov/30669119/)
15. Quach A, Levine ME, Tanaka T, Lu AT, Chen BH, Ferrucci L, Ritz B, Bandinelli S, Neuhauser ML, Beasley JM, Snetselaar L, Wallace RB, Tsao PS, et al. Epigenetic clock analysis of diet, exercise, education, and lifestyle factors. *Aging (Albany NY)*. 2017; 9:419–46.

<https://doi.org/10.18632/aging.101168>

PMID:[28198702](https://pubmed.ncbi.nlm.nih.gov/28198702/)

16. Levine ME, Lu AT, Bennett DA, Horvath S. Epigenetic age of the pre-frontal cortex is associated with neuritic plaques, amyloid load, and Alzheimer's disease related cognitive functioning. *Aging (Albany NY)*. 2015; 7:1198–211.
<https://doi.org/10.18632/aging.100864>
PMID:[26684672](https://pubmed.ncbi.nlm.nih.gov/26684672/)
17. Horvath S, Garagnani P, Bacalini MG, Pirazzini C, Salvioli S, Gentilini D, Di Blasio AM, Giuliani C, Tung S, Vinters HV, Franceschi C. Accelerated epigenetic aging in Down syndrome. *Aging Cell*. 2015; 14:491–95.
<https://doi.org/10.1111/accel.12325> PMID:[25678027](https://pubmed.ncbi.nlm.nih.gov/25678027/)
18. Horvath S, Langfelder P, Kwak S, Aaronson J, Rosinski J, Vogt TF, Eszes M, Faull RL, Curtis MA, Waldvogel HJ, Choi OW, Tung S, Vinters HV, et al. Huntington's disease accelerates epigenetic aging of human brain and disrupts DNA methylation levels. *Aging (Albany NY)*. 2016; 8:1485–512.
<https://doi.org/10.18632/aging.101005>
PMID:[27479945](https://pubmed.ncbi.nlm.nih.gov/27479945/)
19. Gross AM, Jaeger PA, Kreisberg JF, Licon K, Jepsen KL, Khosroheidari M, Morsey BM, Swindells S, Shen H, Ng CT, Flagg K, Chen D, Zhang K, et al. Methylome-wide Analysis of Chronic HIV Infection Reveals Five-Year Increase in Biological Age and Epigenetic Targeting of HLA. *Mol Cell*. 2016; 62:157–68.
<https://doi.org/10.1016/j.molcel.2016.03.019>
PMID:[27105112](https://pubmed.ncbi.nlm.nih.gov/27105112/)
20. Horvath S, Ritz BR. Increased epigenetic age and granulocyte counts in the blood of Parkinson's disease patients. *Aging (Albany NY)*. 2015; 7:1130–42.
<https://doi.org/10.18632/aging.100859>
PMID:[26655927](https://pubmed.ncbi.nlm.nih.gov/26655927/)
21. Levine ME, Lu AT, Chen BH, Hernandez DG, Singleton AB, Ferrucci L, Bandinelli S, Salfati E, Manson JE, Quach A, Kusters CD, Kuh D, Wong A, et al. Menopause accelerates biological aging. *Proc Natl Acad Sci USA*. 2016; 113:9327–32.
<https://doi.org/10.1073/pnas.1604558113>
PMID:[27457926](https://pubmed.ncbi.nlm.nih.gov/27457926/)
22. Marioni RE, Shah S, McRae AF, Chen BH, Colicino E, Harris SE, Gibson J, Henders AK, Redmond P, Cox SR, Pattie A, Corley J, Murphy L, et al. DNA methylation age of blood predicts all-cause mortality in later life. *Genome Biol*. 2015; 16:25.
<https://doi.org/10.1186/s13059-015-0584-6>
PMID:[25633388](https://pubmed.ncbi.nlm.nih.gov/25633388/)
23. Marioni RE, Shah S, McRae AF, Ritchie SJ, Muniz-Terrera G, Harris SE, Gibson J, Redmond P, Cox SR, Pattie A, Corley J, Taylor A, Murphy L, et al. The epigenetic clock is correlated with physical and cognitive fitness in the Lothian Birth Cohort 1936. *Int J Epidemiol*. 2015; 44:1388–96.
<https://doi.org/10.1093/ije/dyu277> PMID:[25617346](https://pubmed.ncbi.nlm.nih.gov/25617346/)
24. Triebner K, Matulonga B, Johannessen A, Suske S, Benediktsdóttir B, Demoly P, Dharmage SC, Franklin KA, Garcia-Aymerich J, Gullón Blanco JA, Heinrich J, Holm M, Jarvis D, et al. Menopause Is Associated with Accelerated Lung Function Decline. *Am J Respir Crit Care Med*. 2017; 195:1058–65.
<https://doi.org/10.1164/rccm.201605-0968OC>
PMID:[27907454](https://pubmed.ncbi.nlm.nih.gov/27907454/)
25. Lu AT, Xue L, Salfati EL, Chen BH, Ferrucci L, Levy D, Joehanes R, Murabito JM, Kiel DP, Tsai PC, Yet I, Bell JT, Mangino M, et al. GWAS of epigenetic aging rates in blood reveals a critical role for TERT. *Nat Commun*. 2018; 9:387.
<https://doi.org/10.1038/s41467-017-02697-5>
PMID:[29374233](https://pubmed.ncbi.nlm.nih.gov/29374233/)
26. Cho S, Kang J, Lyttle C, Harris K, Daley B, Grammer L, Avila P, Kumar R, Schleimer R. Association of elevated plasminogen activator inhibitor 1 levels with diminished lung function in patients with asthma. *Ann Allergy Asthma Immunol*. 2011; 106:371–77.
<https://doi.org/10.1016/j.anaai.2010.12.021>
PMID:[21530867](https://pubmed.ncbi.nlm.nih.gov/21530867/)
27. Wang H, Yang T, Li D, Wu Y, Zhang X, Pang C, Zhang J, Ying B, Wang T, Wen F. Elevated circulating PAI-1 levels are related to lung function decline, systemic inflammation, and small airway obstruction in chronic obstructive pulmonary disease. *Int J Chron Obstruct Pulmon Dis*. 2016; 11:2369–76.
<https://doi.org/10.2147/COPD.S107409>
PMID:[27713627](https://pubmed.ncbi.nlm.nih.gov/27713627/)
28. Levine ME, Hosgood HD, Chen B, Absher D, Assimes T, Horvath S. DNA methylation age of blood predicts future onset of lung cancer in the women's health initiative. *Aging (Albany NY)*. 2015; 7:690–700.
<https://doi.org/10.18632/aging.100809>
PMID:[26411804](https://pubmed.ncbi.nlm.nih.gov/26411804/)
29. Walker RF, Liu JS, Peters BA, Ritz BR, Wu T, Ophoff RA, Horvath S. Epigenetic age analysis of children who seem to evade aging. *Aging (Albany NY)*. 2015; 7:334–39.
<https://doi.org/10.18632/aging.100744>
PMID:[25991677](https://pubmed.ncbi.nlm.nih.gov/25991677/)
30. Martin BW, Ackermann-Liebrich U, Leuenberger P, Künzli N, Stutz EZ, Keller R, Zellweger JP, Wüthrich B, Monn C, Blaser K, Bolognini G, Bongard JP, Brändli O, et al. SAPALDIA: methods and participation in the cross-sectional part of the Swiss Study on Air Pollution and Lung Diseases in Adults. *Soz Präventivmed*. 1997; 42:67–84.

<https://doi.org/10.1007/BF01318136>

PMID:[9151378](https://pubmed.ncbi.nlm.nih.gov/9151378/)

31. Ackermann-Lieblich U, Kuna-Dibbert B, Probst-Hensch NM, Schindler C, Felber Dietrich D, Stutz EZ, Bayer-Oglesby L, Baum F, Brändli O, Brutsche M, Downs SH, Keidel D, Gerbase MW, et al, and SAPALDIA Team. Follow-up of the Swiss Cohort Study on Air Pollution and Lung Diseases in Adults (SAPALDIA 2) 1991-2003: methods and characterization of participants. *Soz Präventivmed.* 2005; 50:245–63.
<https://doi.org/10.1007/s00038-005-4075-5>
PMID:[16167509](https://pubmed.ncbi.nlm.nih.gov/16167509/)
32. Burney PG, Luczynska C, Chinn S, Jarvis D. The European Community Respiratory Health Survey. *Eur Respir J.* 1994; 7:954–60.
<https://doi.org/10.1183/09031936.94.07050954>
PMID:[8050554](https://pubmed.ncbi.nlm.nih.gov/8050554/)
33. Imboden M, Wielscher M, Rezwan FI, Amaral AF, Schaffner E, Jeong A, Beckmeyer-Borowko A, Harris SE, Starr JM, Deary IJ, Flexeder C, Waldenberger M, Peters A, et al. Epigenome-wide association study of lung function level and its change. *Eur Respir J.* 2019; 54:1900457.
<https://doi.org/10.1183/13993003.00457-2019>
PMID:[31073081](https://pubmed.ncbi.nlm.nih.gov/31073081/)
34. Miller MR, Hankinson J, Brusasco V, Burgos F, Casaburi R, Coates A, Crapo R, Enright P, van der Grinten CP, Gustafsson P, Jensen R, Johnson DC, MacIntyre N, et al, and ATS/ERS Task Force. Standardisation of spirometry. *Eur Respir J.* 2005; 26:319–38.
<https://doi.org/10.1183/09031936.05.00034805>
PMID:[16055882](https://pubmed.ncbi.nlm.nih.gov/16055882/)
35. Bridevaux PO, Dupuis-Lozeron E, Schindler C, Keidel D, Gerbase MW, Probst-Hensch NM, Bettschart R, Burdet L, Pons M, Rothe T, Turk A, Stolz D, Tschopp JM, et al. Spirometer Replacement and Serial Lung Function Measurements in Population Studies: Results From the SAPALDIA Study. *Am J Epidemiol.* 2015; 181:752–61.
<https://doi.org/10.1093/aje/kwu352> PMID:[25816817](https://pubmed.ncbi.nlm.nih.gov/25816817/)
36. Horvath S, Gurven M, Levine ME, Trumble BC, Kaplan H, Allayee H, Ritz BR, Chen B, Lu AT, Rickabaugh TM, Jamieson BD, Sun D, Li S, et al. An epigenetic clock analysis of race/ethnicity, sex, and coronary heart disease. *Genome Biol.* 2016; 17:171.
<https://doi.org/10.1186/s13059-016-1030-0>
PMID:[27511193](https://pubmed.ncbi.nlm.nih.gov/27511193/)
37. Viechtbauer W. Conducting Meta-Analyses in R with the metafor Package. *J Stat Softw.* 2010; 36:1-48.
<https://doi.org/10.18637/jss.v036.i03>
38. Dratva J, Zemp E, Staedele P, Schindler C, Constanza MC, Gerbase M, Probst-Hensch N, Rochat T, Ackermann-Lieblich U, Ackermann-Lieblich U, and SAPALDIA-Team. Variability of reproductive history across the Swiss SAPALDIA cohort—patterns and main determinants. *Ann Hum Biol.* 2007; 34:437–53.
<https://doi.org/10.1080/03014460701365821>
PMID:[17620152](https://pubmed.ncbi.nlm.nih.gov/17620152/)
39. R Core Team. R: A Language and Environment for Statistical Computing. Vienna, Austria: R Foundation for Statistical Computing; 2016. <https://www.r-project.org/>

SUPPLEMENTARY MATERIALS

COHORT SPECIFIC FUNDING AND ACKNOWLEDGEMENT

SAPALDIA - Swiss study on air pollution heart and lung disease in adults

ACKNOWLEDGMENTS

The study could not have been done without the help of the study participants, technical and administrative support and the medical teams and field workers at the local study sites.

Study directorate: NM Probst-Hensch (PI; e/g); T Rochat (p), C Schindler (s), N Künzli (e/exp), JM Gaspoz (c)

Scientific team: JC Barthélémy (c), W Berger (g), R Bettschart (p), A Bircher (a), C Brombach (n), PO Bridevaux (p), L Burdet (p), Felber Dietrich D (e), M Frey (p), U Frey (pd), MW Gerbase (p), D Gold (e), E de Groot (c), W Karrer (p), F Kronenberg (g), B Martin (pa), A Mehta (e), D Miedinger (o), M Pons (p), F Roche (c), T Rothe (p), P Schmid-Grendelmeyer (a), D Stolz (p), A Schmidt-Trucksäss (pa), J Schwartz (e), A Turk (p), A von Eckardstein (cc), E Zemp Stutz (e).

Scientific team at coordinating centers: M Adam (e), I Aguilera (exp), S Brunner (s), D Carballo (c), S Caviezel (pa), I Curjuric (e), A Di Pascale (s), J Dratva (e), R Ducret (s), E Dupuis Lozeron (s), M Eeftens (exp), I Eze (e), E Fischer (g), M Foraster (e), M Germond (s), L Grize (s), S Hansen (e), A Hensel (s), M Imboden (g), A Ineichen (exp), A Jeong (g), D Keidel (s), A Kumar (g), N Maire (s), A Mehta (e), R Meier (exp), E Schaffner (s), T Schikowski (e), M Tsai (exp) (a) allergology, (c) cardiology, (cc) clinical chemistry, (e) epidemiology, (exp) exposure, (g) genetic and molecular biology, (m) meteorology, (n) nutrition, (o) occupational health, (p) pneumology, (pa) physical activity, (pd) pediatrics, (s) statistics

FUNDING

The Swiss National Science Foundation (grants no 33CS30-148470/1&2, 33CSCO-134276/1, 33CSCO108796, 324730_135673, 3247BO-104283, 3247BO-104288, 3247BO-104284, 3247-065896, 3100-059302, 3200-052720, 3200-042532, 4026-028099, PMPDP3_129021/1, PMPDP3_141671/1), the Federal

Office for the Environment, the Federal Office of Public Health, the Federal Office of Roads and Transport, the canton's government of Aargau, Basel-Stadt, Basel-Land, Geneva, Luzern, Ticino, Valais, and Zürich, the Swiss Lung League, the canton's Lung League of Basel Stadt/ Basel Landschaft, Geneva, Ticino, Valais, Graubünden and Zurich, Stiftung ehemals Bündner Heilstätten, SUVA, Freiwillige Akademische Gesellschaft, UBS Wealth Foundation, Talecris Biotherapeutics GmbH, Abbott Diagnostics, European Commission 018996 (GABRIEL), Wellcome Trust WT 084703MA, Exposomics EC FP7 grant(Grant agreement No: 308610).

ECRHS - european community respiratory health survey

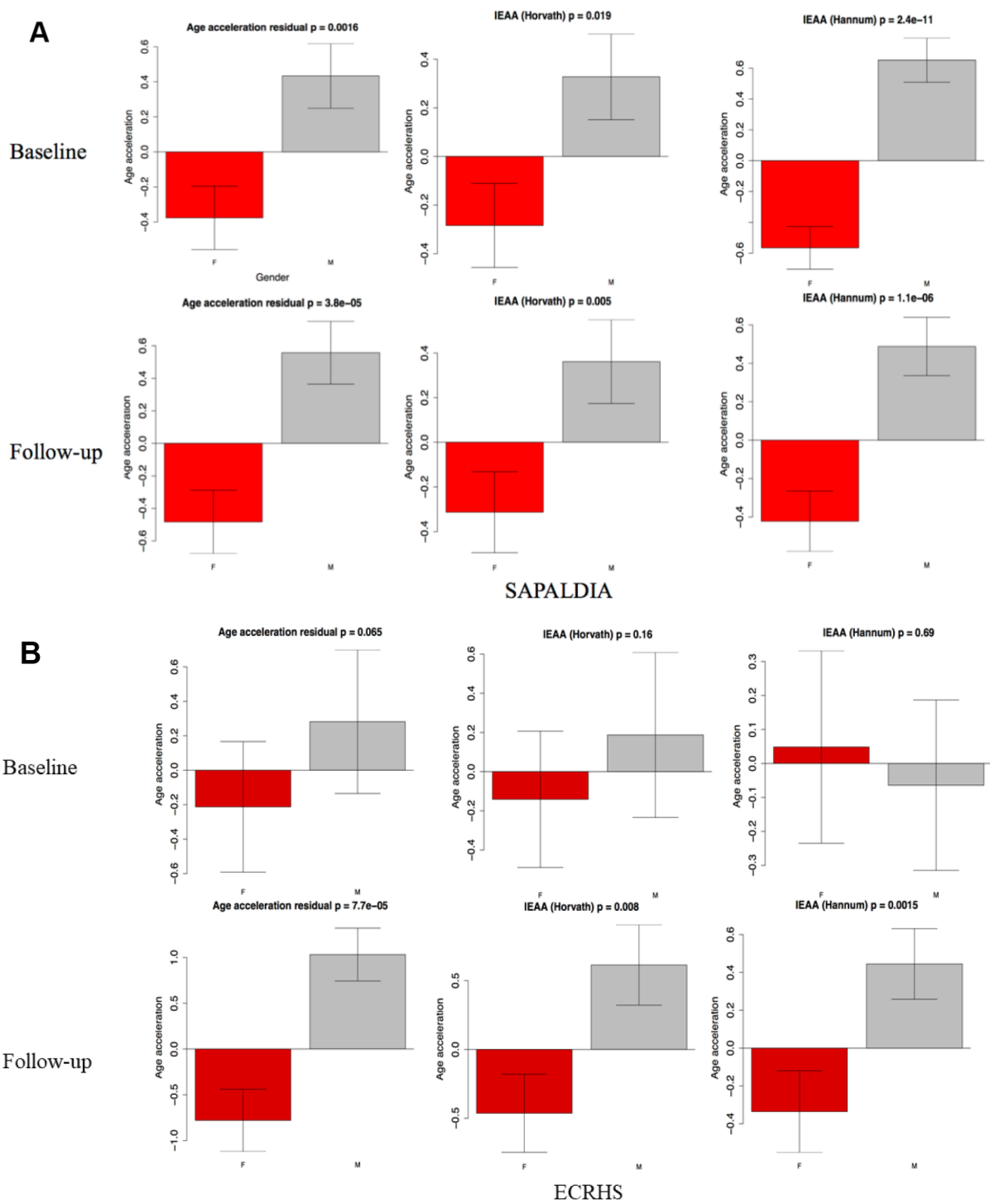
ACKNOWLEDGMENTS

The authors would like to thank the participants, field workers and researchers who have participated in the ECRHS study for their time and cooperation.

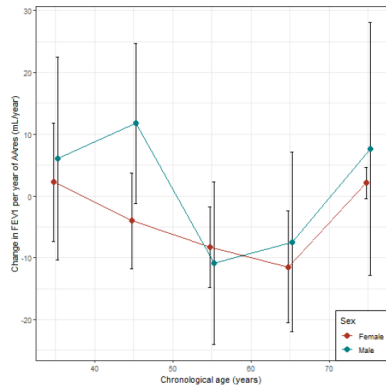
FUNDING

This work was supported by a contract from the European Commission (018996), Fondo de Investigación Sanitaria (91/0016-060-05/E, 92/0319, 93/0393, 97/0035-01, 99/0034-01 and 99/0034-02), Hospital General de Albacete, Hospital General Ramón Jiménez, Consejería de Sanidad del Principado de Asturias, CIRIT (1997SGR 00079, 1999SGR 00241), and Servicio Andaluz de Salud, SEPAR, Public Health Service (R01 HL62633-01), RCEP (C03/09), Red RESPIRA (C03/011), Basque Health Department, Swiss National Science Foundation, Swiss Federal Office for Education and Science, Swiss National Accident Insurance Fund (SUVA), GSF-National Research Centre for Environment and Health, Deutsche Forschungsgemeinschaft (DFG) (FR 1526/1-1, MA 711/4-1), Programme Hospitalier de Recherche Clinique-DRC de Grenoble 2000 no. 2610, Ministry of Health, Direction de la Recherche Clinique, Ministère de l'Emploi et de la Solidarite, Direction Generale de la Sante, CHU de Grenoble, Comite des Maladies Respiratoires de l'Isere. UCB-Pharma (France), Aventis (France), Glaxo France. Estonian Science Foundation, and Asthma UK (formerly known as National Asthma Campaign UK).

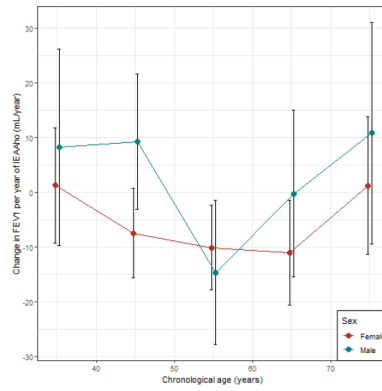
Supplementary Figures



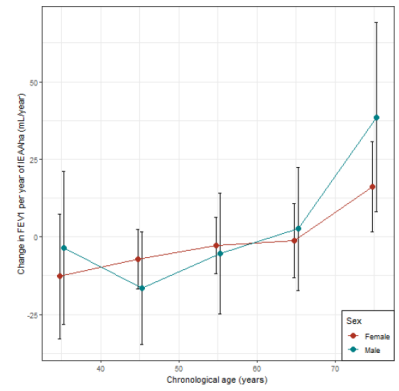
Supplementary Figure 1. Sex-specific effect on epigenetic age acceleration.



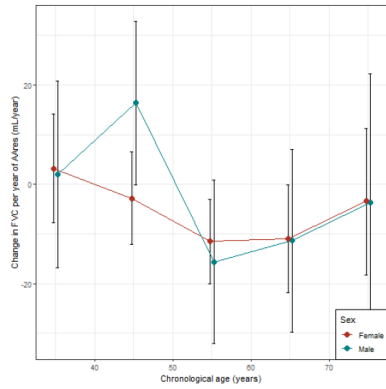
A Changes in FEV₁ per year of AA_{res}



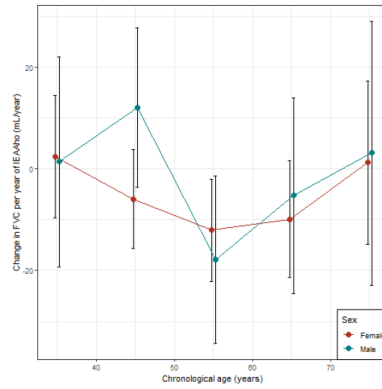
B Changes in FEV₁ per year of IEAA



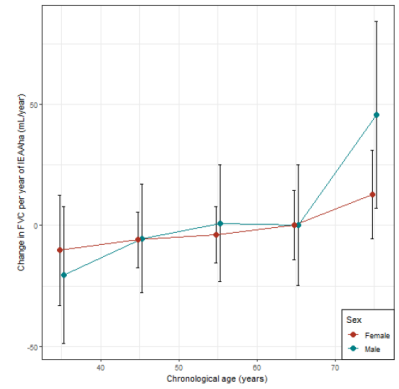
C Changes in FEV₁ per year of EEAA



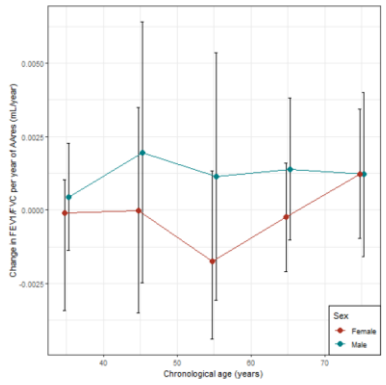
D Changes in FVC per year of AA_{res}



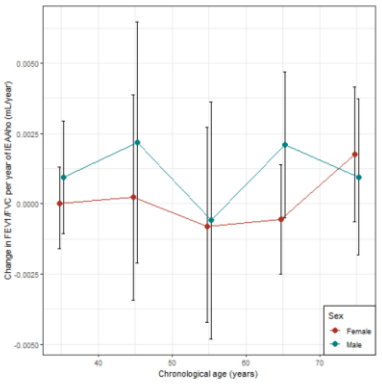
E Changes in FVC per year of IEAA



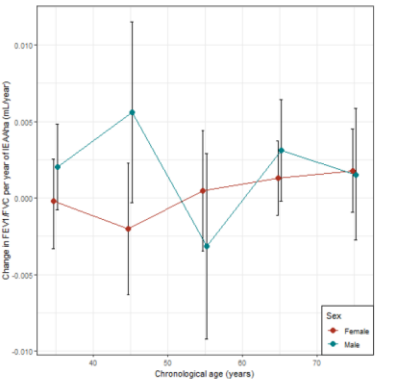
F Changes in FVC per year of EEAA



G Changes in FEV₁/FVC per year of AA_{res}



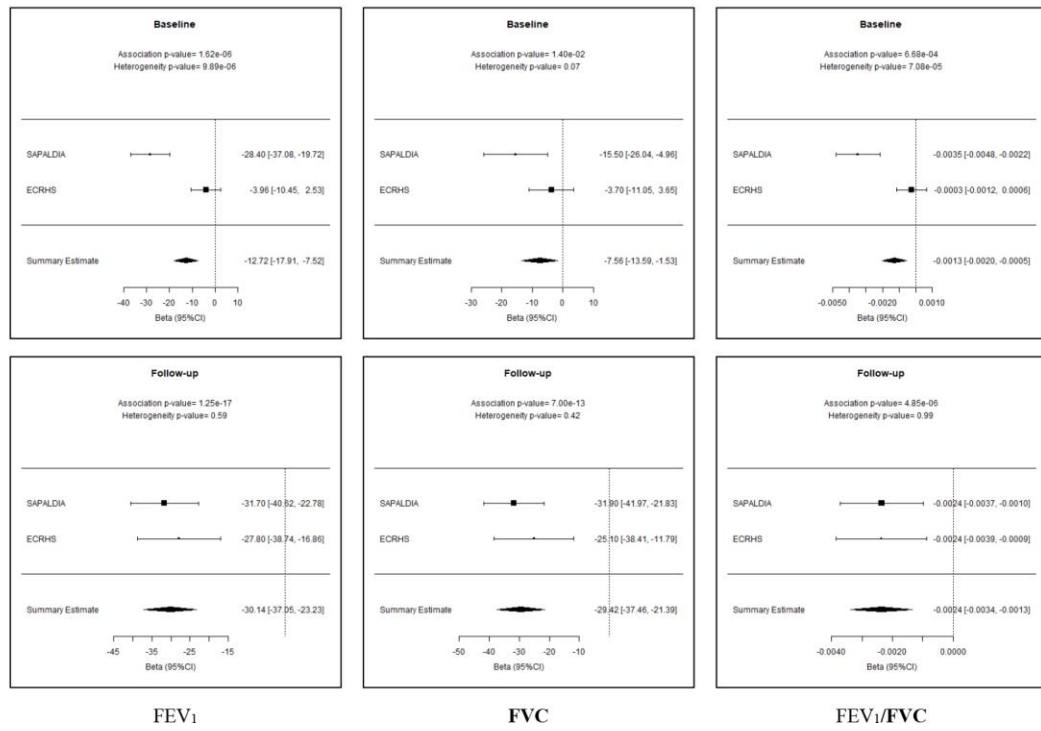
H Changes in FEV₁/FVC per year of IEAA



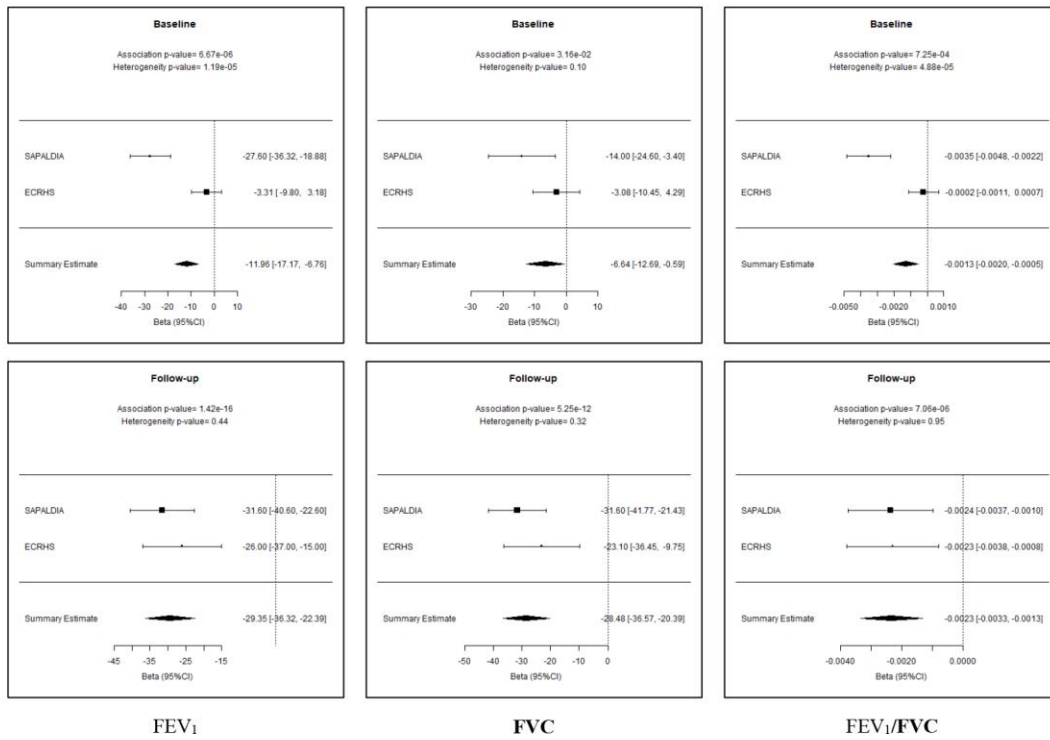
I Changes in FEV₁/FVC per year of EEAA

Supplementary Figure 2. Age stratified analyses comparing association between lung function and epigenetic age accelerations. X-axis represents stratifications by 10 years intervals. Y-axis represents the estimates (changed in lung function per year of epigenetic age acceleration in mLs/year) from the linear models with 95% confidence intervals.

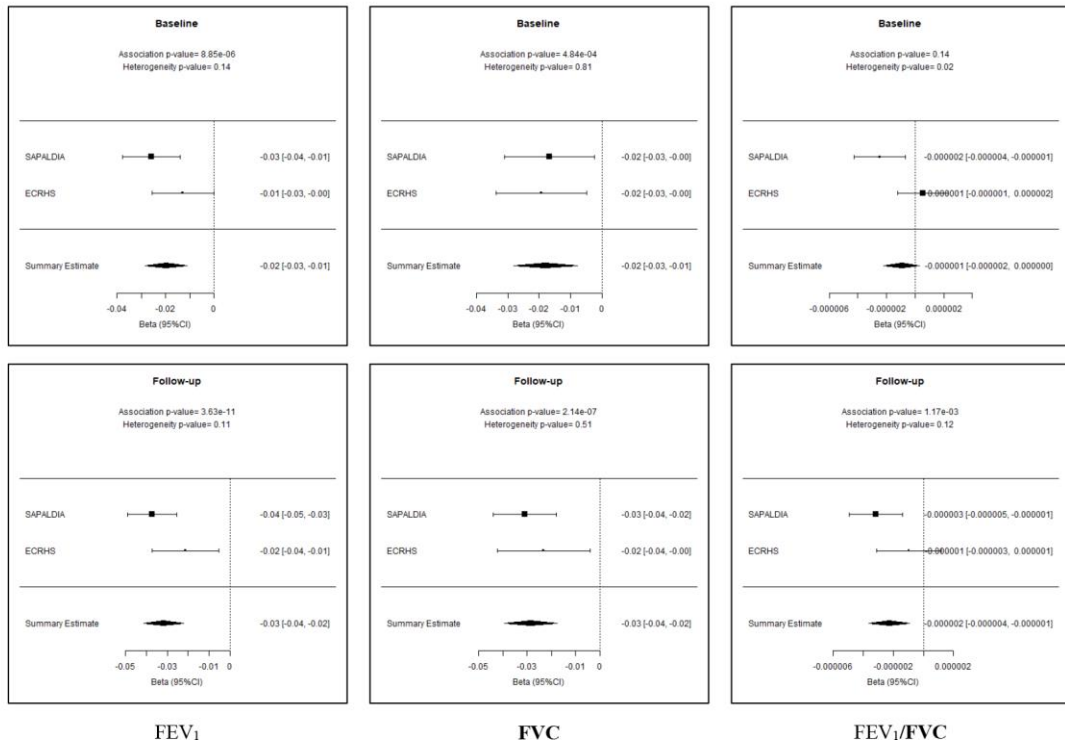
A DNAmAge_{grim}



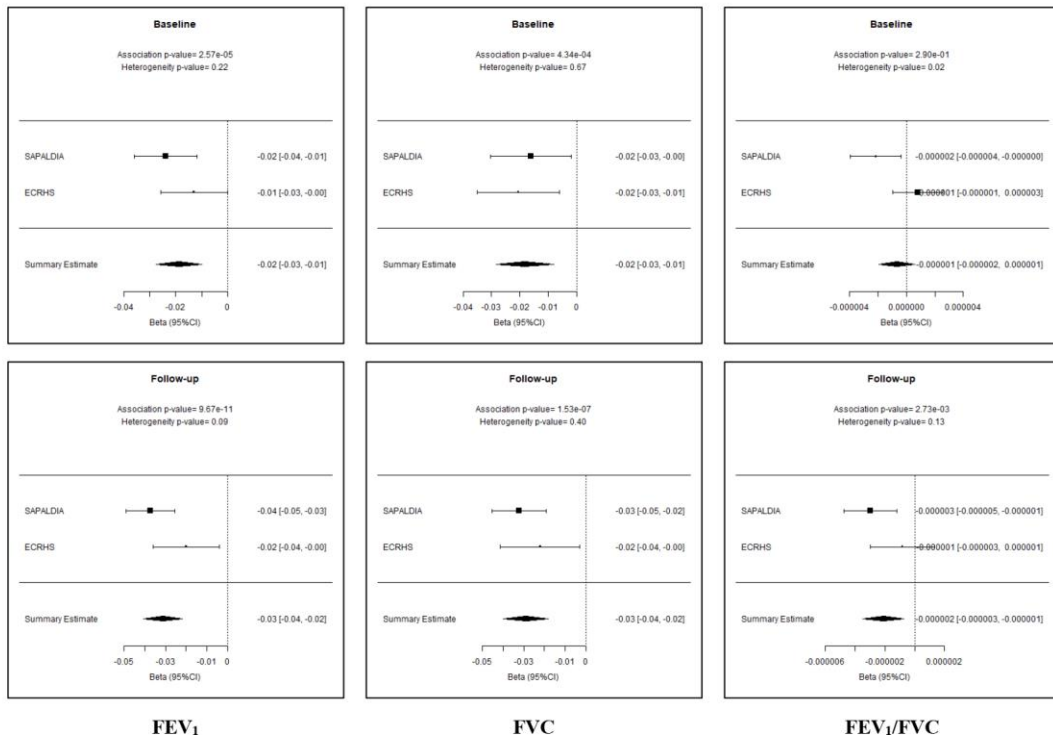
B AA_{grim}



C DNAmPAI1

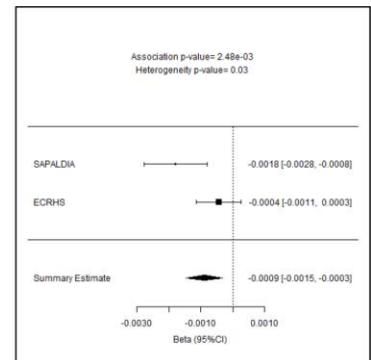
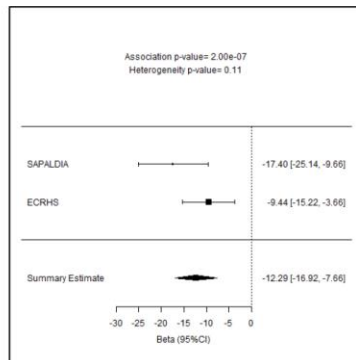
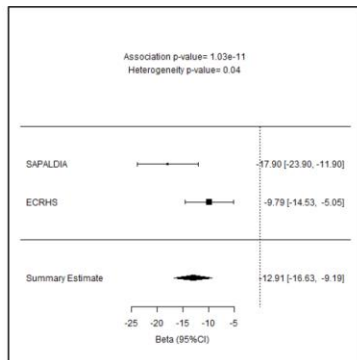


D DNAmPAI_{adj}

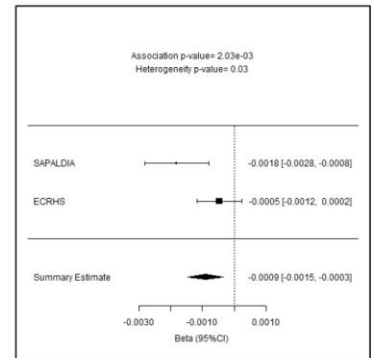
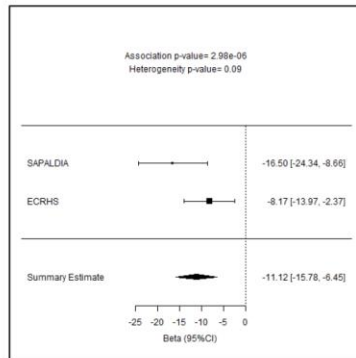
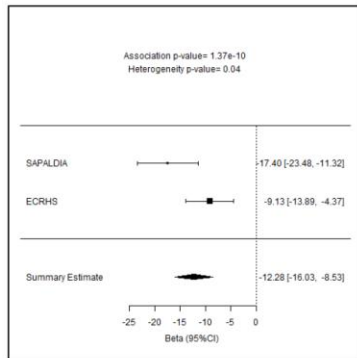


Supplementary Figure 3. Cross-sectional meta-analysis results of association between DNAm GrimAge (DNAmGrim), Age-adjusted measure of DNAm GrimAge (AA_{grim}), DNAm plasminogen activation inhibitor 1 (DNAmPAI1) and Age adjusted DNAm PAI-1 (DNAmPAI1_{adj}) with lung function (FEV₁, FVC, and FEV₁/FVC) in SAPALDIA and ECRHS cohorts. The estimates have been measured with 95% confidence interval.

DNAmAge_{grim}



AA_{grim}

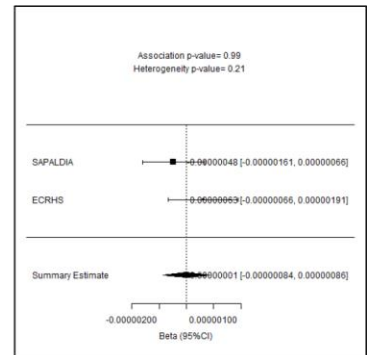
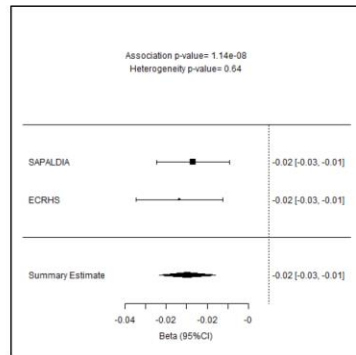
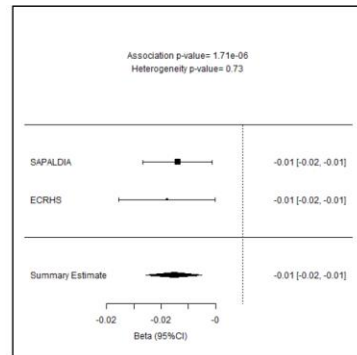


FEV₁

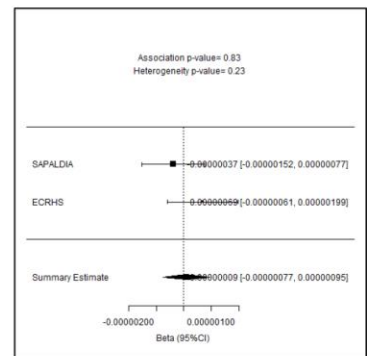
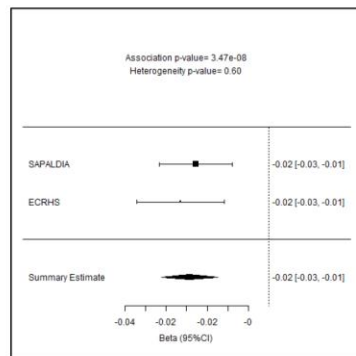
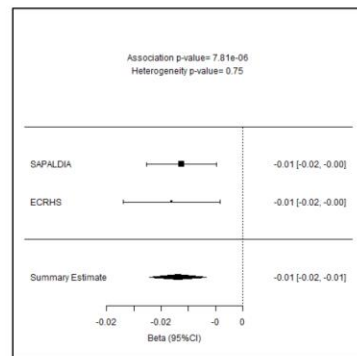
FVC

FEV₁/FVC

DNAmPAI1



DNAmPAI1_{adj}



FEV₁

FVC

FEV₁/FVC

Supplementary Figure 4. Linear mixed model meta-analysis association of lung function (FEV₁, FVC, and FEV₁/FVC) with DNAm GrimAge (DNAmGrim), Age-adjusted measure of DNAm GrimAge (AA_{grim}), DNAm plasminogen activation inhibitor 1 (DNAmPAI1) and Age adjusted DNAm PAI-1 (DNAmPAI1_{adj}) two time points (baseline and follow-up). The estimates have been measured with 95% confidence interval.

Supplementary Tables

Please browse Full Text version to see the data of Supplementary Tables 1

Supplementary Table 1. Cross-sectional meta-analysis results of association between age acceleration and lung function of males and females in SAPALDIA and ECRHS. SAP = SAPALIDA, ECR = ECRHS. Lower and upper is the lower and upper ranges of 95% confidence interval of estimates.

Supplementary Table 2. Longitudinal meta-analysis results of association between age acceleration and lung function of males and females in SAPALDIA and ECRHS. SAP = SAPALIDA, ECR = ECRHS.

A. Male

Age acceleration	Lung function	Cohort	Estimate	Lower	Upper	P-value	Meta p-value
AA _{res}	FEV ₁	SAP	0.75	-6.33	7.84	0.83	0.61
		ECR	1.53	-4.68	7.67	0.62	
	FVC	SAP	-2.35	-11.7	7.05	0.62	0.82
		ECR	0.49	-7.54	8.44	0.90	
	FEV ₁ /FVC	SAP	0.0002	-0.0009	0.001	0.72	0.54
		ECR	0.0002	-0.0007	0.001	0.62	
IEAA	FEV ₁	SAP	2.86	-4.37	10.1	0.44	0.15
		ECR	3.46	-2.34	9.16	0.23	
	FVC	SAP	-1.01	-10.6	8.64	0.84	0.96
		ECR	0.85	-6.73	8.32	0.82	
	FEV ₁ /FVC	SAP	0.0004	-0.0008	0.002	0.55	0.25
		ECR	0.0004	-0.0004	0.001	0.33	
EEAA	FEV ₁	SAP	-0.70	-9.60	8.19	0.88	0.13
		ECR	-10.10	-19.74	-0.46	0.04	
	FVC	SAP	-3.55	-15.43	8.33	0.56	0.4
		ECR	-3.84	-16.36	8.68	0.55	
	FEV ₁ /FVC	SAP	-0.0002	-0.001	0.0009	0.43	0.43
		ECR	-0.0003	-0.001	0.0006	0.05	

B. Female

Age acceleration	Lung function	Cohort	Estimate	Lower	Upper	P-value	Meta- p-value
AA _{res}	FEV ₁	SAP	-4.12	-8.35	0.108	0.056	0.23
		ECR	-0.09	-3.34	3.13	0.96	
	FVC	SAP	-3.94	-9.78	1.88	0.18	0.06
		ECR	-2.84	-7.06	1.36	0.19	
	FEV ₁ /FVC	SAP	-0.0005	-0.001	0.0004	0.29	1.0
		ECR	0.0002	-0.0004	0.0008	0.48	
IEAA	FEV ₁	SAP	-3.66	-8.1	0.77	0.11	0.34
		ECR	0.22	-3.57	3.98	0.91	
	FVC	SAP	-2.8	-8.93	3.31	0.37	0.13
		ECR	-2.99	-7.89	1.88	0.23	
	FEV ₁ /FVC	SAP	-0.0005	-0.001	0.0005	0.36	0.98
		ECR	0.0003	-0.0004	0.0009	0.48	
EEAA	FEV ₁	SAP	-3.21	-8.66	2.24	0.25	0.05
		ECR	-3.88	-8.74	0.98	0.12	
	FVC	SAP	-2.43	-9.90	5.04	0.52	0.13
		ECR	-4.60	-10.91	1.71	0.15	
	FEV ₁ /FVC	SAP	-0.0002	-0.001	0.0006	0.29	0.28
		ECR	-0.0005	-0.001	0.0002	0.58	

Lower and upper is the lower and upper ranges of 95% confidence interval of estimates.

Supplementary Table 3. Longitudinal meta-analysis results of association between age acceleration and rate of lung function changes over baseline and follow-up of males and females in SAPALDIA and ECRHS.

A. Male

Age acceleration	Lung function	Cohort	Estimate	Lower	Upper	P-value	Meta p-value
AA _{res}	FEV ₁	SAP	0.28	-0.80	1.36	0.61	0.22
		ECR	0.39	-0.29	1.06	0.26	
	FVC	SAP	0.54	-1.19	2.27	0.54	0.17
		ECR	0.57	-0.36	1.5	0.23	
	FEV ₁ /FVC	SAP	-6.2x10 ⁻⁰⁵	-0.0002	0.0001	0.50	0.92
		ECR	1.4x10 ⁻⁰⁵	-9.1x10 ⁻⁰⁵	0.0001	0.79	
IEAA	FEV ₁	SAP	0.55	-0.52	1.63	0.31	0.75
		ECR	0.51	-0.12	1.13	0.11	
	FVC	SAP	0.44	-1.29	2.17	0.62	0.11
		ECR	0.67	-0.19	1.54	0.13	
	FEV ₁ /FVC	SAP	-1.2x10 ⁻⁰⁵	-0.0002	0.0002	0.90	0.06
		ECR	2.1x10 ⁻⁰⁵	-7.7 x10 ⁻⁰⁵	0.0001	0.67	
EEAA	FEV ₁	SAP	0.20	-1.13	1.54	0.76	0.51
		ECR	0.51	-0.12	1.13	0.11	
	FVC	SAP	0.21	-1.94	2.35	0.85	0.57
		ECR	0.67	-0.19	1.54	0.13	
	FEV ₁ /FVC	SAP	5.8 x10 ⁻⁰⁵	-0.0002	0.0003	0.60	0.98
		ECR	2.1 x10 ⁻⁰⁵	-7.7 x10 ⁻⁰⁵	0.0001	0.67	

B. Female

Age acceleration	Lung function	Cohort	Estimate	Lower	Upper	P-value	Meta p-value
AA _{res}	FEV ₁	SAP	-0.23	-0.84	0.39	0.47	0.38
		ECR	0.22	-0.10	0.54	0.17	
	FVC	SAP	0.22	-0.69	1.13	0.64	0.98
		ECR	-0.05	-0.47	0.36	0.81	
	FEV ₁ /FVC	SAP	-0.0001	-0.0003	2.97 x10 ⁻⁰⁵	0.12	0.17
		ECR	6.2 x10 ⁻⁰⁵	4.3 x10 ⁻⁰⁵	0.0001	0.04	
IEAA	FEV ₁	SAP	-0.18	-0.82	0.46	0.58	0.29
		ECR	0.30	-0.08	0.67	0.12	
	FVC	SAP	0.34	-0.60	1.29	0.48	0.81
		ECR	-0.02	-0.51	0.47	0.92	
	FEV ₁ /FVC	SAP	-0.0001	-0.0003	4.5 x10 ⁻⁰⁵	0.17	0.16
		ECR	7.5 x10 ⁻⁰⁵	6.7 x10 ⁻⁰⁵	0.0001	0.03	
EEAA	FEV ₁	SAP	-0.12	-0.91	0.68	0.77	0.59
		ECR	0.30	-0.08	0.67	0.12	
	FVC	SAP	0.52	-0.66	1.69	0.39	0.62
		ECR	-0.02	-0.51	0.47	0.92	
	FEV ₁ /FVC	SAP	-0.0002	-0.0004	-3.3 x10 ⁻⁰⁶	0.05	0.98
		ECR	7.5 x10 ⁻⁰⁵	6.7 x10 ⁻⁰⁶	0.0001	0.032	

Supplementary Table 4. Comparison between two meta-analyses models (with and without menopausal status). The difference (z-score) between the estimates from two models is calculated by Wald type test by the following equation:

$$z = \frac{\mu_1 - \mu_2}{\sqrt{SE[\mu_1]^2 + SE[\mu_2]^2}}$$

Here, μ_1 μ_2 are estimates and $SE[\mu_1]$, $SE[\mu_2]$ are corresponding standard errors of two meta-analyses.

		z -score	P-value
AA _{res}	FEV ₁	-0.042	0.966
	FVC	-0.009	0.993
	FEV ₁ /FVC	0.779	0.28
IEAA	FEV ₁	-0.087	0.931
	FVC	-0.044	0.965
	FEV ₁ /FVC	0.416	0.677
EEAA	FEV ₁	-0.105	0.917
	FVC	-0.09	0.928
	FEV ₁ /FVC	0.095	0.924

Supplementary Table 5. Association between menopausal status and lung function.

	Lung function	Estimate	Lower	Upper	P-value
Pre- vs. Peri-menopause	FEV ₁	-6	-130	117	0.919
	FVC	11	-140	163	0.882
	FEV ₁ /FVC	-0.002	-0.019	0.016	0.845
Pre- vs. Post-menopause	FEV ₁	-109	-222	3	0.057
	FVC	-83	-212	46	0.209
	FEV ₁ /FVC	-0.009	-0.027	0.01	0.353
Peri- vs. Post-menopause	FEV ₁	-62	-153	29	0.18
	FVC	-27	-130	76	0.607
	FEV ₁ /FVC	-0.011	-0.026	0.005	0.175

The units for estimates of FEV₁ and FVC are in mL. Lower and upper is the lower and upper ranges of 95% confidence interval of estimates.

Supplementary Table 6. Association between menopausal status and age acceleration.

		Beta	Lower	Upper	P-value
Pre- vs. Peri-menopause	AA _{res}	-0.135	-1.27	0.997	0.814
	IEAA	-0.397	-1.5	0.704	0.478
	EEAA	0.248	-0.617	1.11	0.573
Pre- vs. Post-menopause	AA _{res}	-0.129	-0.971	0.714	0.764
	IEAA	-0.221	-1.02	0.575	0.585
	EEAA	-0.0345	-0.69	0.62	0.918
Peri- vs. Post-menopause	AA _{res}	0.007	-0.948	0.961	0.989
	IEAA	0.176	-0.738	1.09	0.705
	EEAA	-0.282	-1.04	0.479	0.467

The units for estimate of age accelerations are in years. Lower and upper is the lower and upper ranges of 95% confidence interval of estimates.

Please browse Full Text version to see the data of Supplementary Table 7

Supplementary Table 7. Age stratified cross-sectional analysis results of association between age acceleration and lung function of females in SAPALDIA and ECRHS. Lower and upper is the lower and upper ranges of 95% confidence interval of estimates.