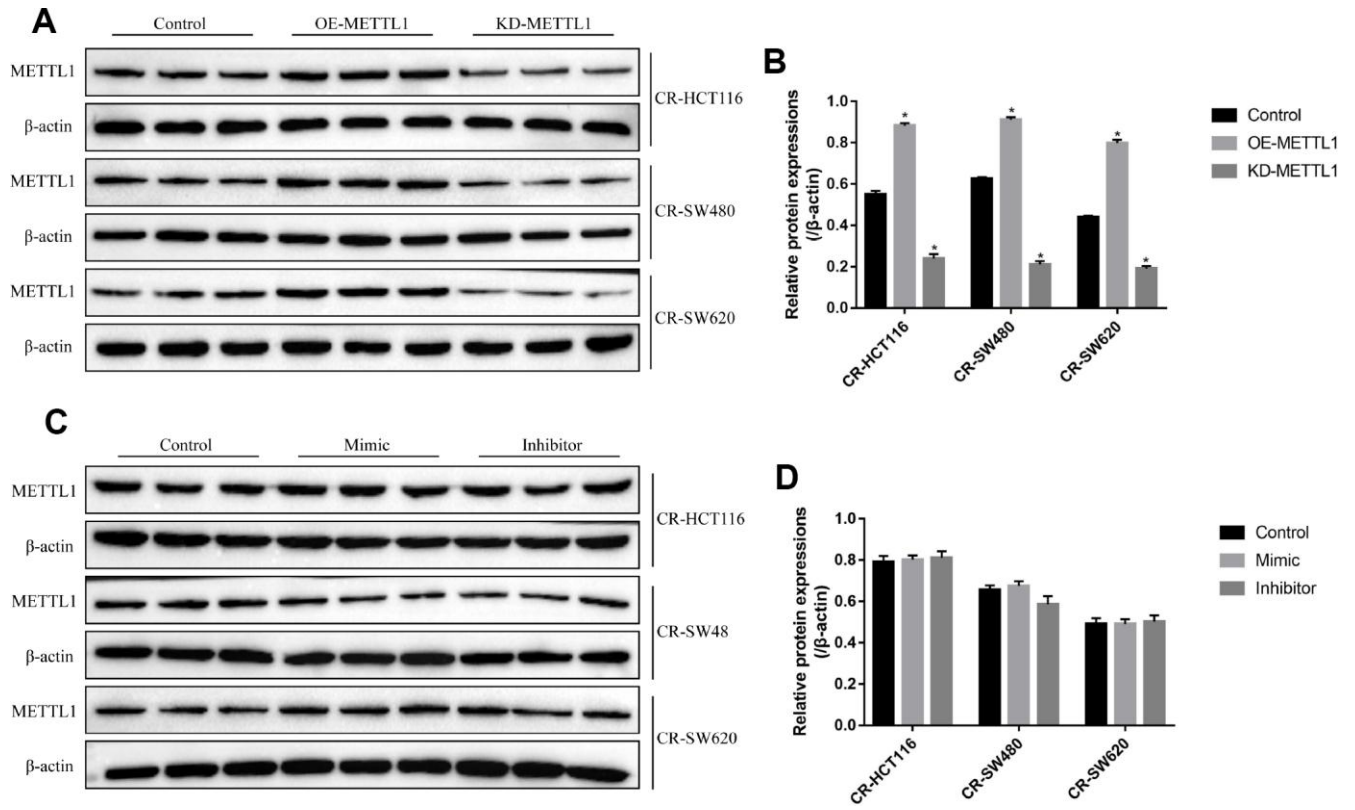
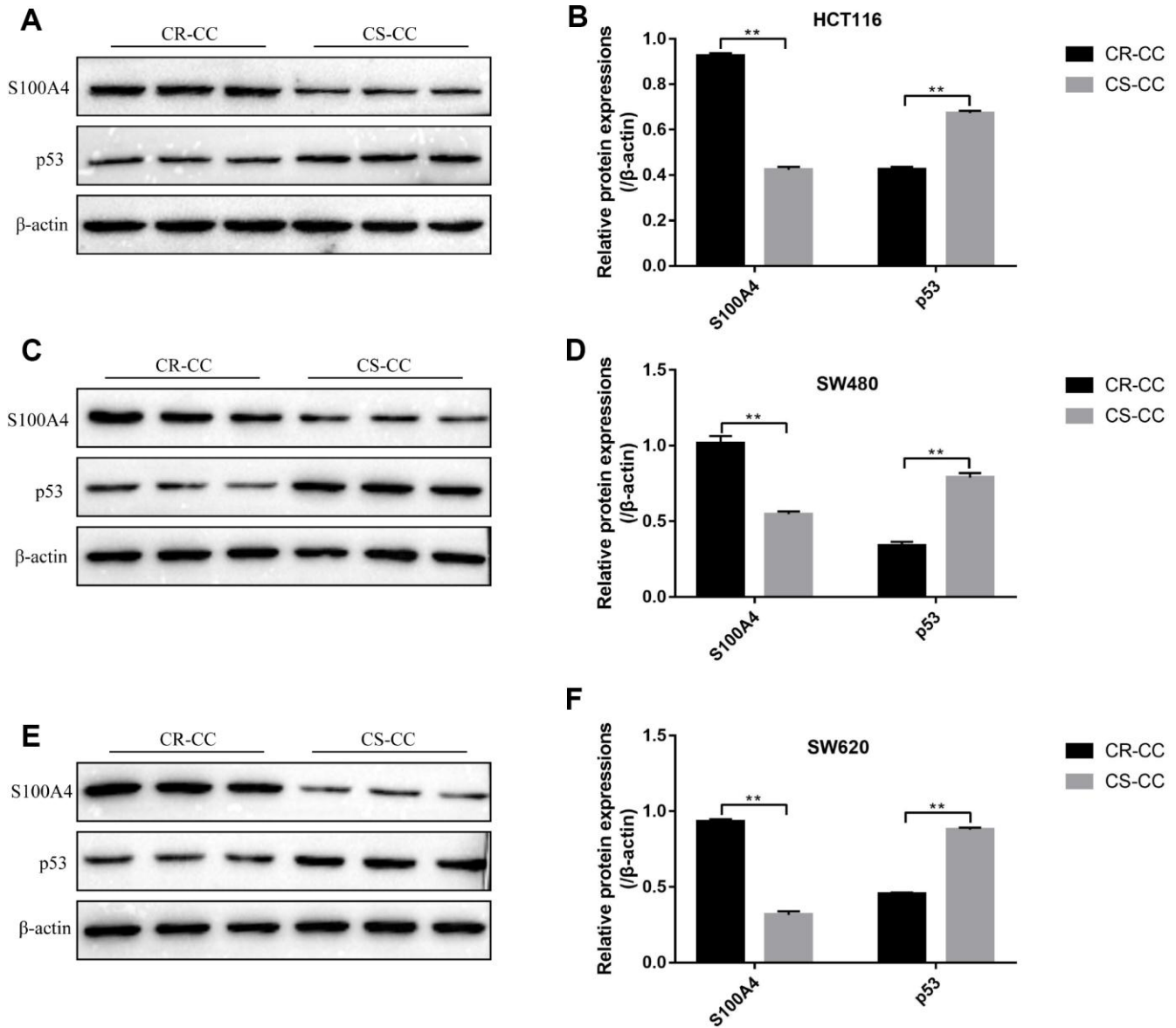


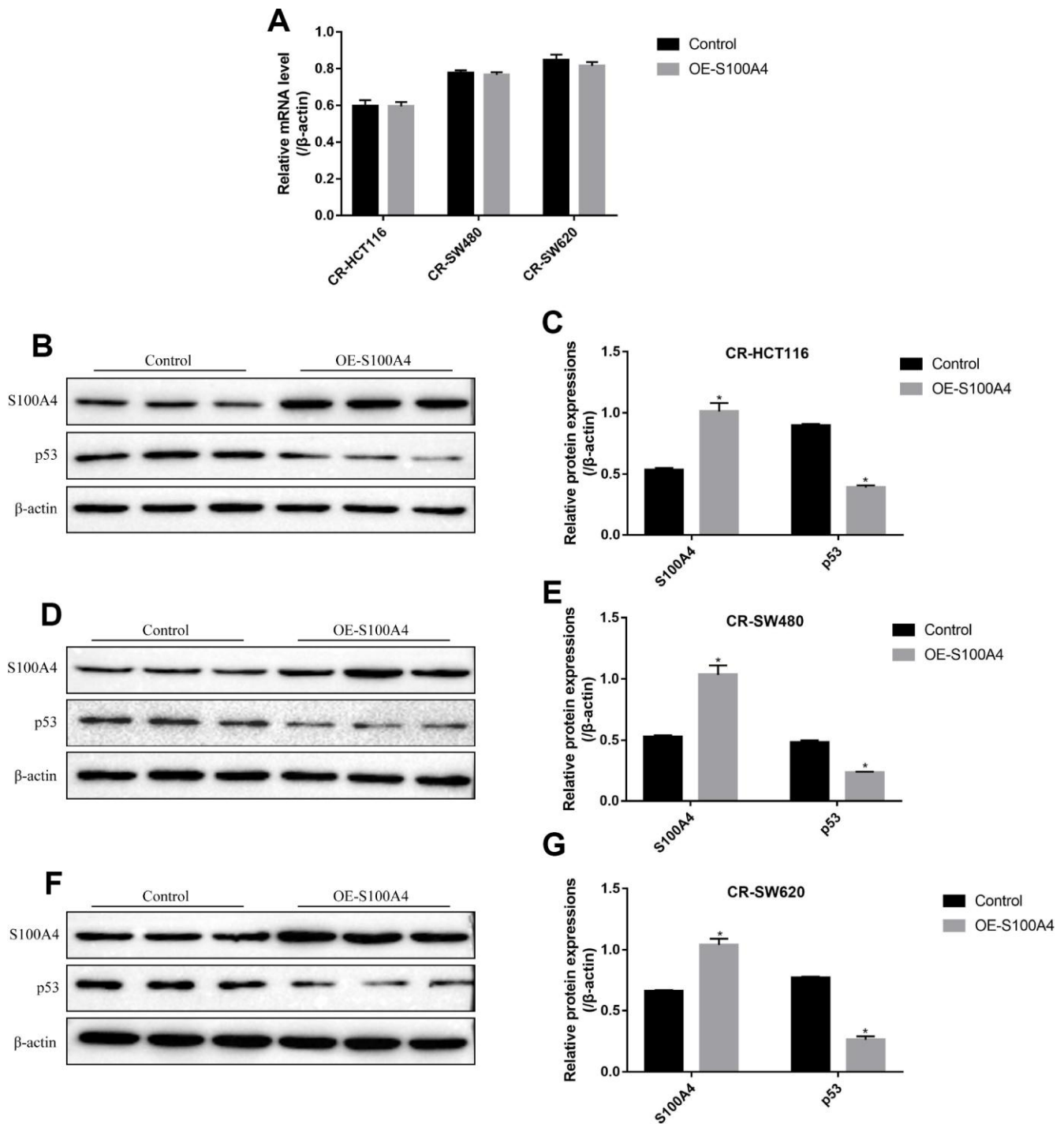
SUPPLEMENTARY FIGURES



Supplementary Figure 1. Western Blot was used to determine (A) the expression levels of METTL1 in CR-CC cells and (B) the effects of miR-149-3p on METTL1 levels in CR-CC cells. All the experiments repeated at least 3 times. “*” means $p < 0.05$, “***” means $p < 0.01$ and “NS” means no statistical significance.



Supplementary Figure 2. Western Blot was used to determine the expression levels of S100A4 and p53 in (A, B) HCT116 cells, (C, D) SW480 cells and (E, F) SW620 cells. All the experiments repeated at least 3 times. “*” means $p < 0.05$, “**” means $p < 0.01$ and “NS” means no statistical significance.



Supplementary Figure 3. The effects of S100A4 on p53 levels in CR-CC cells. (A) Real-Time qPCR was used to detect S100A4 mRNA levels. Western Blot was used to determine the expression levels of S100A4 and p53 in (B, C) CR-HCT116 cells, (D, E) CR-SW480 cells and (F, G) CR-SW620 cells. All the experiments repeated at least 3 times. “*” means $p < 0.05$, “***” means $p < 0.01$ and “NS” means no statistical significance.