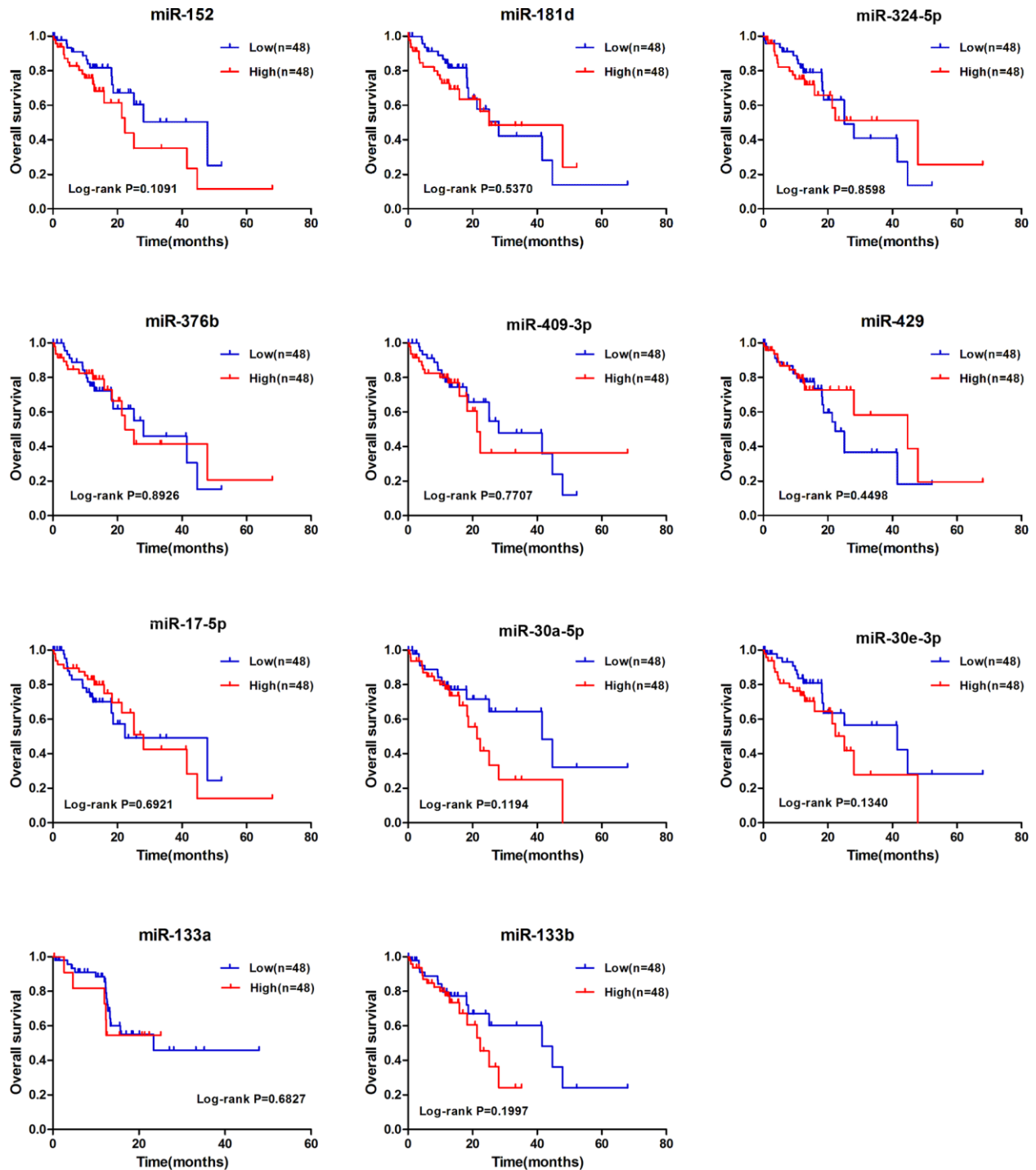
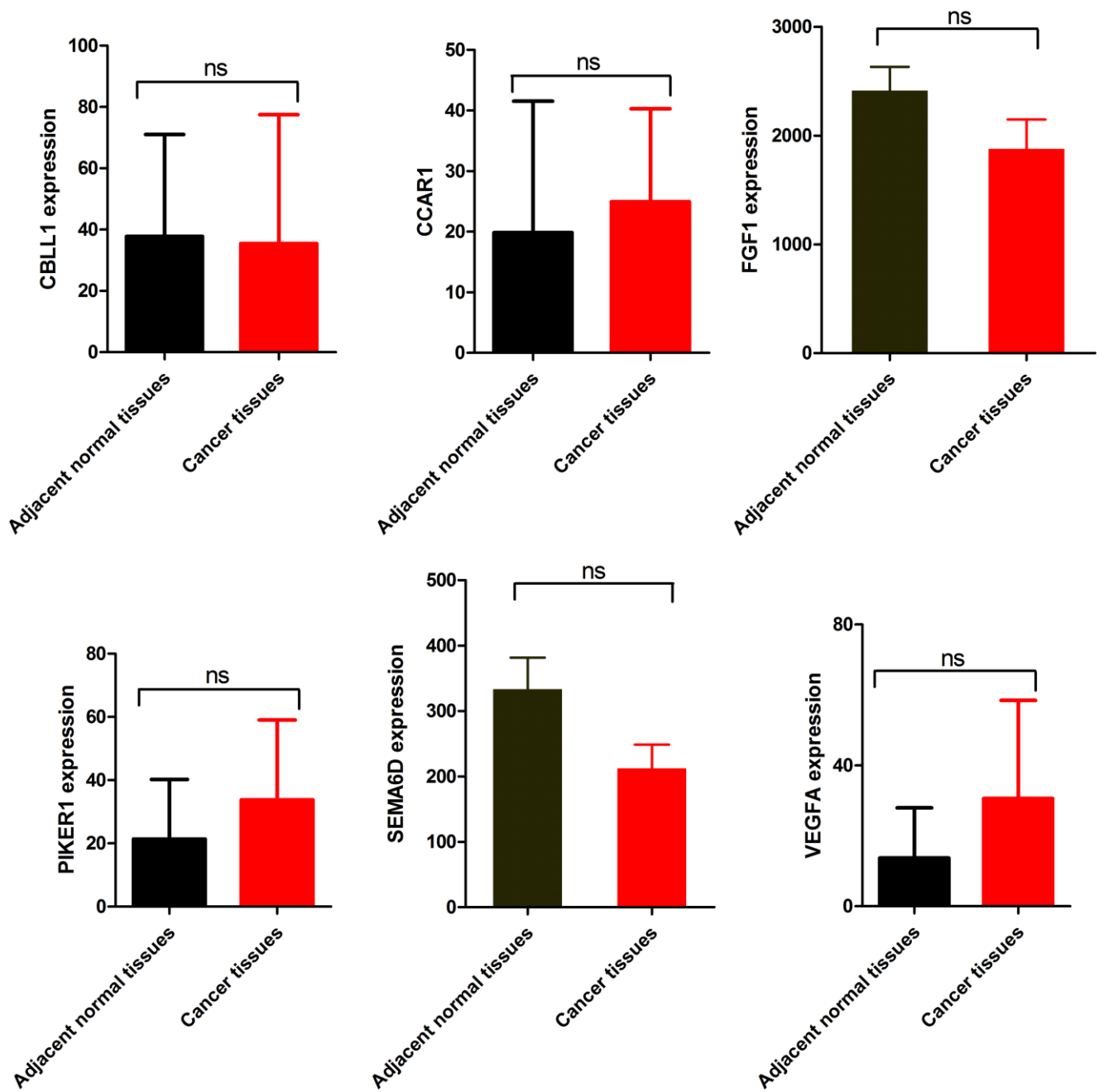


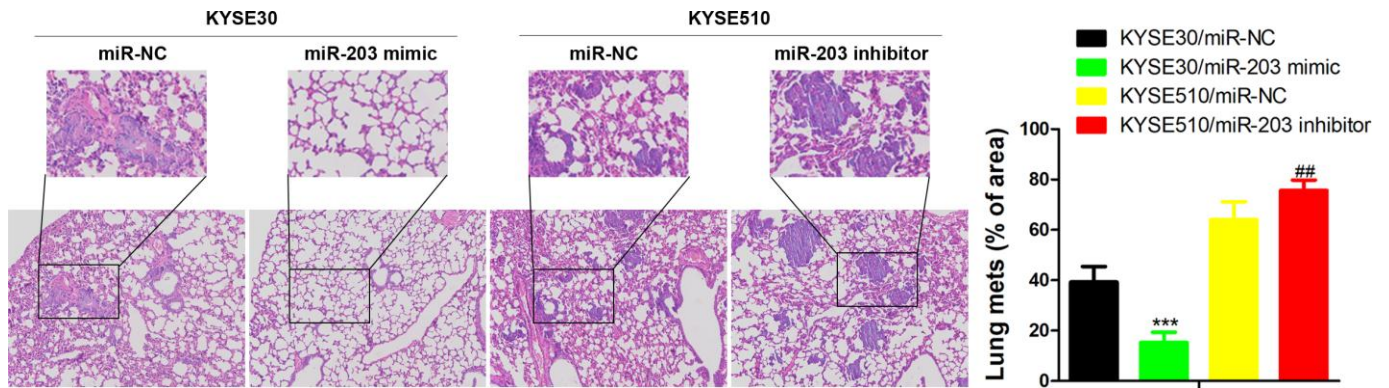
## SUPPLEMENTARY FIGURES



**Supplementary Figure 1. Relationship between overall survival and miRNA expression of EC patients.** Kaplan-Meier curves for overall survival according to differential expression level of miRNAs in EC patients, cutoff value is the average expression level. p-value was calculated based on log rank test.



Supplementary Figure 2. mRNA expression of potential direct targets of miR-203 in tumor tissues and adjacent normal tissues of EC patients was revealed by mRNA-seq provided by TCGA. Data are presented as mean  $\pm$  SD.



**Supplementary Figure 3. The changes of lung metastasis of different genetically modified cells.** Data is presented as mean  $\pm$  SD from three independent experiments ( $\times 100$ ). \*\*\* $p < 0.001$  (KYSE30/miR-203 mimic vs. KYSE30/miR-NC), # $p < 0.05$  (KYSE510/miR-203 inhibitor vs. KYSE510/miR-NC).