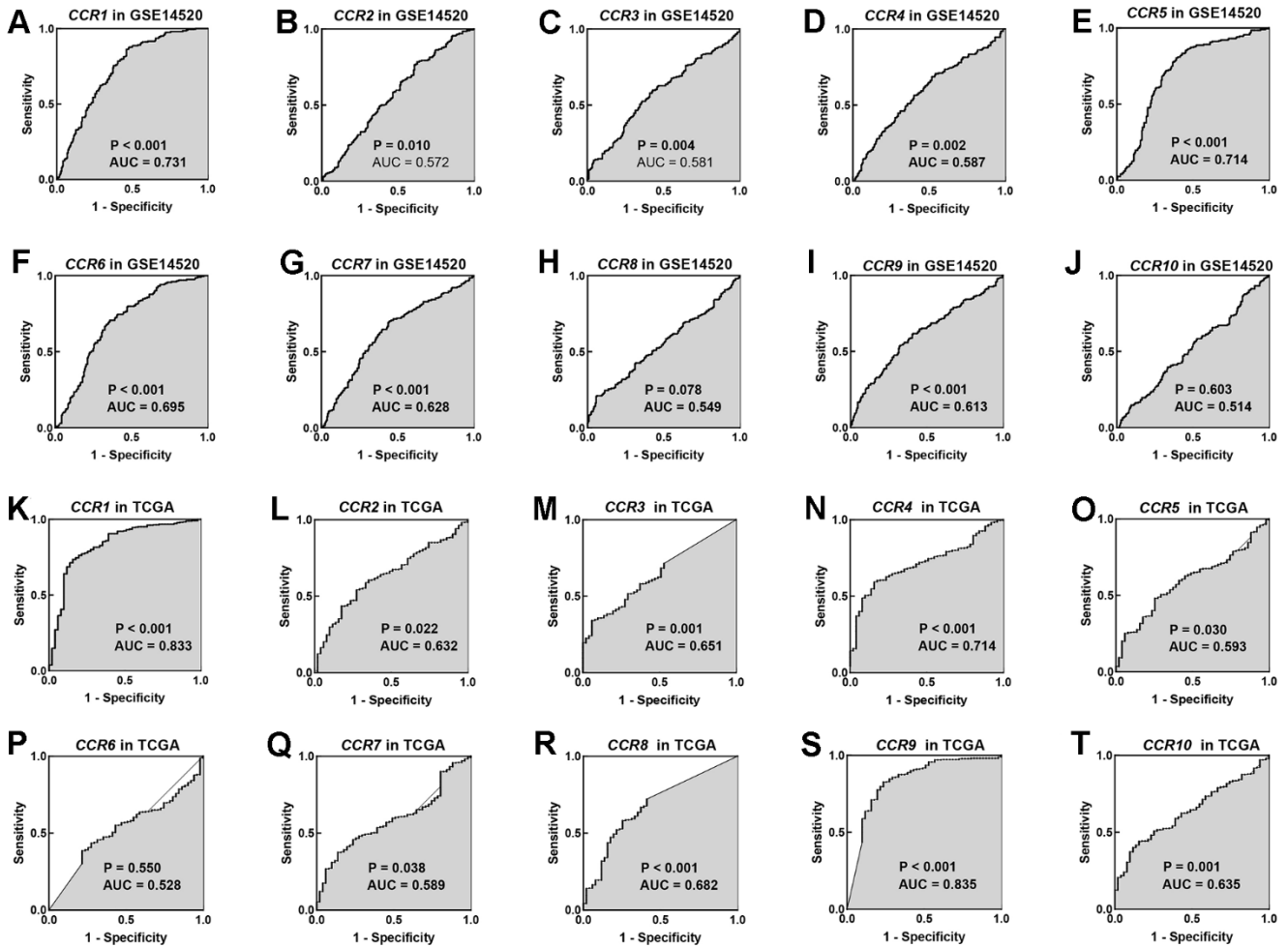
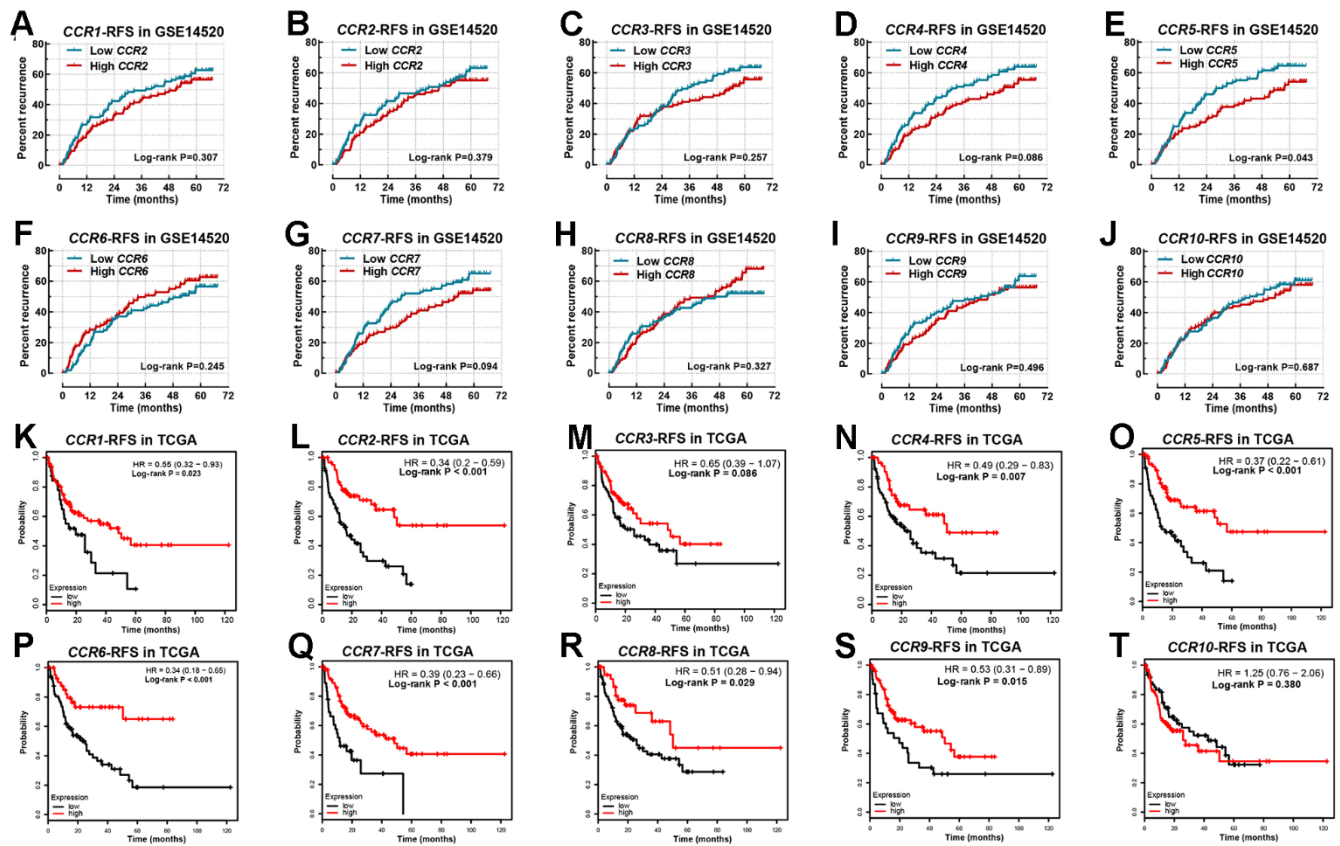


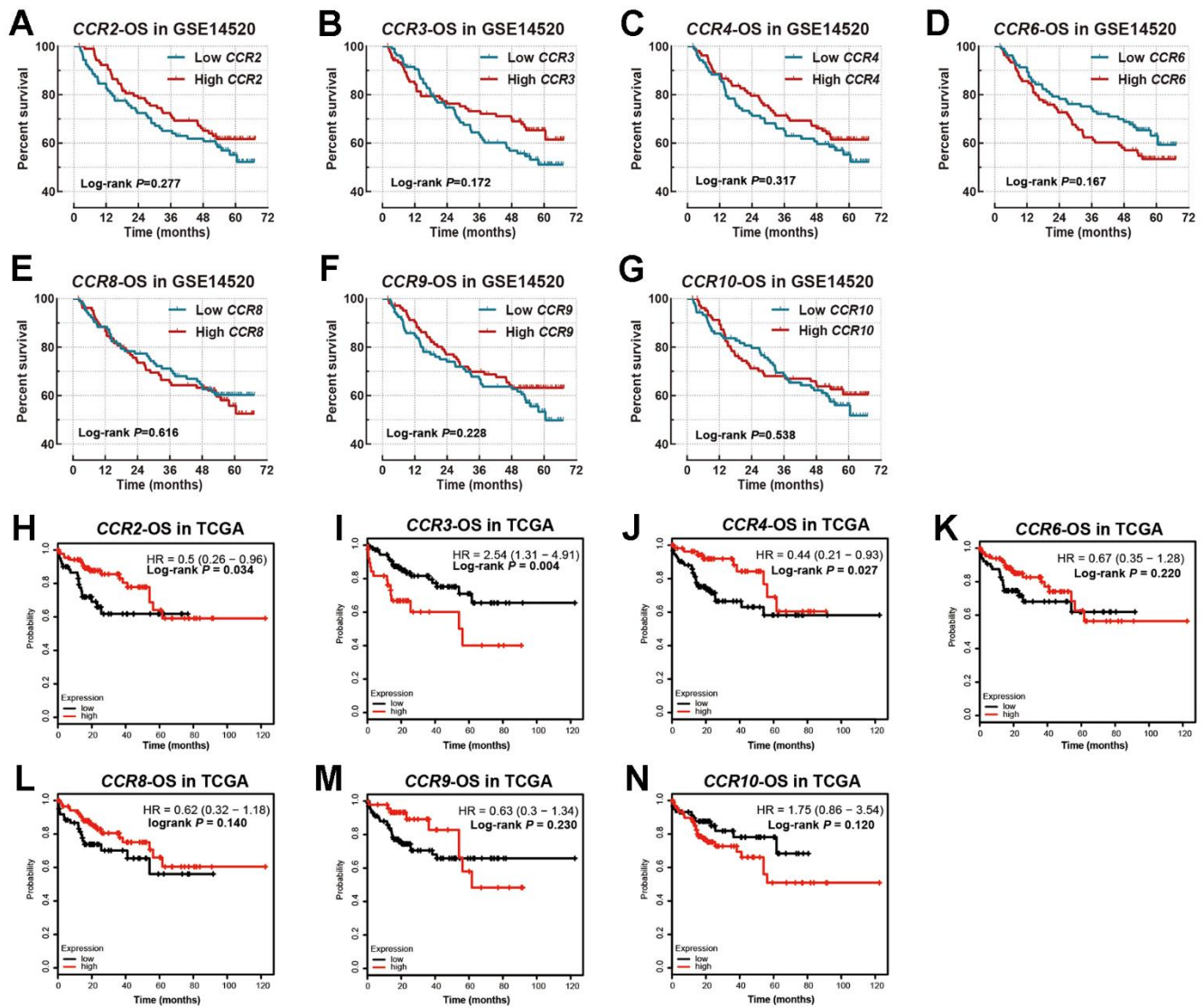
**SUPPLEMENTARY FIGURES**



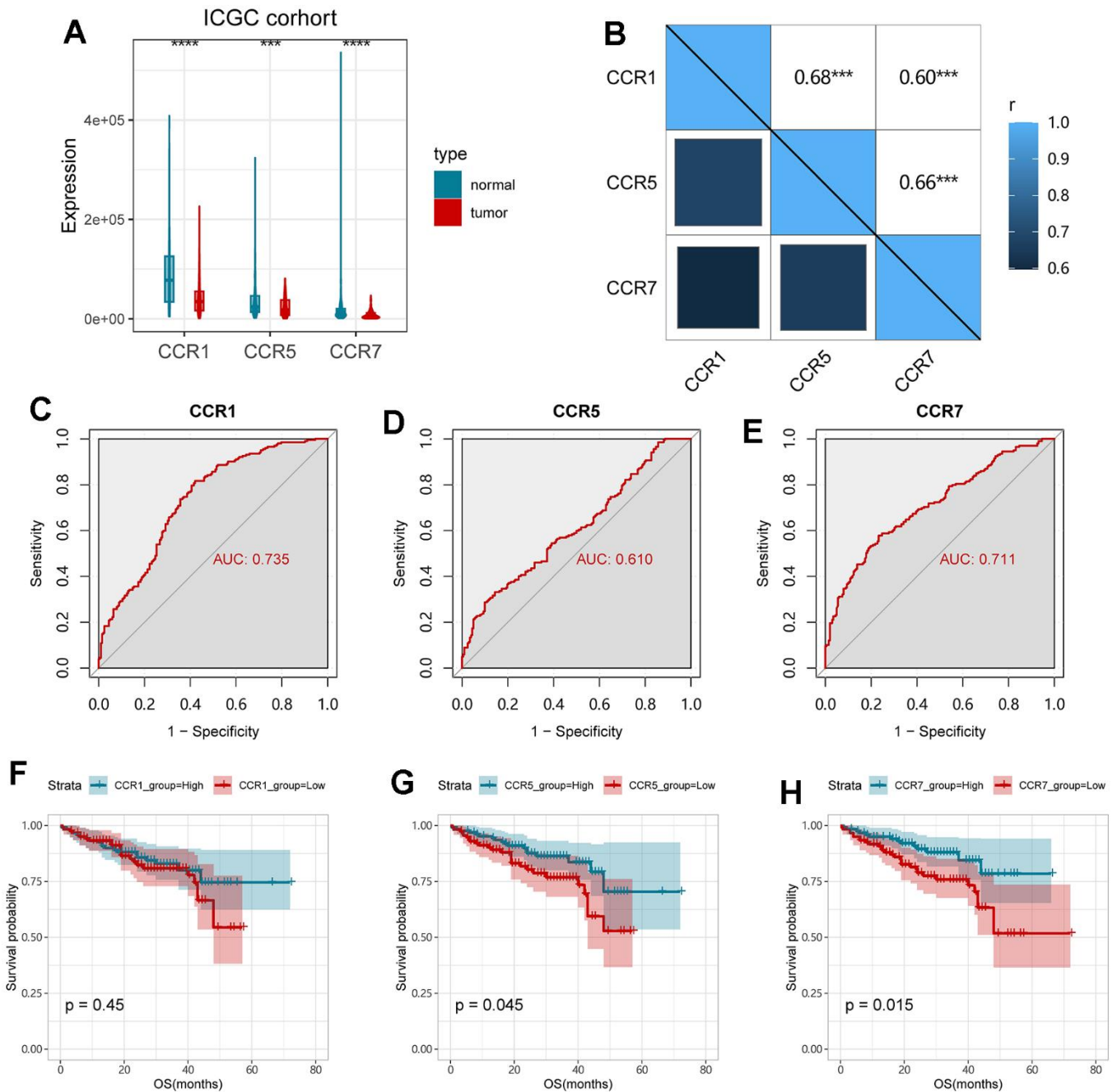
**Supplementary Figure 1. ROC curves of CCRs in GSE14520 dataset and TCGA database. (A–J) CCR1–CCR10 in GSE14520; (K–T) CCR1–CCR10 in TCGA.**



Supplementary Figure 2. Survival analysis for RFS in GSE14520 dataset and TCGA database. (A–J) *CCR1-CCR10* in GSE14520; (K–T) *CCR1-CCR10* in TCGA.



**Supplementary Figure 3. Survival curves for OS in GSE14520 dataset and TCGA database. (A–G) CCR2, CCR3, CCR4, CCR6, CCR8, CCR9 and CCR10 in GSE14520; (H–N) CCR2, CCR3, CCR4, CCR6, CCR8, CCR9 and CCR10 in TCGA database.**



**Supplementary Figure 4. Validation of the clinical significance of CCR1, CCR5, and CCR7 in the ICGC cohort.** (A) Expression level of CCRs between HCC and para-carcinoma tissues in ICGC; (B) Matrix graphs of Pearson correlations for CCR1, CCR5 and CCR7; (C–E) ROC curves for CCR1, CCR5 and CCR7; (F–H) survival analysis for OS in terms of CCR1, CCR5 and CCR7, \*\* P<0.01; \*\*\* P<0.001.